

Technical Data Sheet



Pattex Nail Power Fix PL600

Total

Product Description Pattex PL 600 is an INSTANT TACK[®] Solvent based professional adhesive which bonds a broad range of materials. Pattex PL 600 with INSTANT TACK[®] delivers immediate bonding to substrate without flashing or additional steps or waiting.

Uses

- f* Pattex PL 600 is designed for indoor & outdoor use.
- f* Pattex PL 600 is compatible with a broad range of substrates including Brick, Ceramic, Concrete, Hardboard, Plasterboard, Plywood, Stone, MDF, UPVC, many Plastics*.

Characteristics/ Advantages

- f* INSTANT TACK[®] solvent based formula
- f* No need to flash the solvent
- f* Works under contact bonding conditions
- f* No need to support joints with mechanical fixings
- f* Outdoor and Indoor use
- f* Overpaintable once dry**
- f* Water resistant
- f* For porous and non-porous surfaces
- f* Easy application at low temperature -10°C
- f* Low odor

Technical Data

- f* **Raw material:** Rubber, solvent
- f* **Density (specific wt.):** 1,25 g/cm³
- f* **Temperature resistance:** -20°C to +80°C, fully cured
- f* **Open time / Working time:** Approx. 10 min
- f* **Application temperature:** -10°C to +35°C
- f* **Gap bridging capacity:** Max. 10mm
- f* **Initial tack:** Approx. 12 g/cm²
- f* **Final Strength (DIN EN 205):** 5 to 6 N/mm²
- f* **Setting time:** 48 h
- f* **Coverage on flat surfaces:** Approx. 300g/m²
- f* **Shrinkage:** Approx. 25 %

Application Details

Substrates All absorbent and non-absorbent substrates except PE, PP, PTFE, acrylic glass etc. are suitable. With coated substrates, a check of product suitability or professional advice is recommended. Not recommended for permanent water immersion.

Substrates should Preparation Ensure surfaces to be bonded are clean and free of dust, grease or oil. Surfaces not be visibly wet or continuously damp.

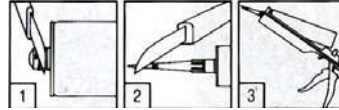
Substrates must be stable. Remove the dirt with the appropriate solvent or sand down surfaces and clean afterwards from the dust. Before application, mask off the adjacent area with foil or tape, if necessary.

*Pre-test plastics and lacquers to determine suitable bonding and compatibility.

**Because of many different paints, pretest is necessary.

Application

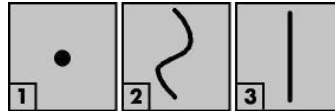
Cut off tip of the cartridge above the screw thread (1). Screw on plastic nozzle and diagonally cut off the tip of the nozzle (2). Place cartridge into gun (3). Item can be repositioned within 5 to 10 minutes after application to achieve perfect alignment.



* Opening of the plastic cartridge

Apply adhesive onto one of the surfaces: 1) In spots in order to smooth uneven surfaces,

> in wave-like form for higher initial tack with wide surfaces or 3) in straight strands for smaller surfaces. In case of outdoor use or in rooms with high moisture, apply vertical strands.



Application of the adhesive

Release the trigger on the gun after each application to prevent the adhesive from flowing

Further Remarks

- f* Pattex PL 600 has been specifically formulated to minimize the need for mechanical fixings during the drying process. Depending on the substrates, it can be necessary to support heavier objects.
- f* One surface should be absorbent to ensure a solid, secure bond because solvent has to evaporate. For two non porous substrates apply PL 600 in vertical strands so that the solvent has the possibility to evaporate.



- Minimum application temperature -10°C.
- To ensure proper bond, press firmly so that all surfaces are in contact with adhesive.
- Allow to dry overnight to ensure proper adhesion. Bond is fully dry after 48h.

Important Information

Cleaning

- f* Clean directly after use with a dry cloth and afterwards with Acetone or Mineral spirit.
- Wipe away excess adhesive with a cloth before the adhesive dries.

Storage

- f* Store cool, dry and unopened, up to 18 months.
- Store away from heat, flame, and spark in a cool area. Product is not damaged by freezing, but product is best stored above freezing.
- Keep away from children.
- Once opened, be sure to recap, use entire cartridge shortly after opening.

Internet

www.henkel.com

Safety

This drafting of this technical data sheet is the result of our professional knowledge and practical experience, and represents the very latest technological developments.

Note: The information contained herein can only be considered a general guideline. As processing and application conditions are beyond influence, and due to the wide range of materials available, we strongly recommend prior adequate testing before use. Legal liability cannot be accepted solely on the basis of the contents of this data sheet, and our sole guarantee, as part of sales conditions, is the continuing high quality of our products. For **safety precautions** and **disposal conditions**, see the corresponding product Material Safety Data Sheet.