

Technical Data Sheet



Pattex Nail Power Fix PL50

Power

Nature of product: white smooth paste based on solvent free water-based dispersion
The formula is VOC compliant and meets the Environmental Protection Department of the Hong Kong Special Administrative Region Government's VOC regulatory requirements.
VOC content is < 70 g/L (USEPA Method 24 & SCAQMD Method 303-91, less water and less exempt compounds).

Field of application:

- At least one surface must be porous. Safe sticking of:
- Wood plates, door frames
- Wall coverings made of wood-, chip-, plaster-, cardboard-, PVC- and cork plates
- Decorative plates and elements made of polystyrene, polyurethane rigid-foam and gypsum Sound insulation and fiber boards
- PVC cable and ventilation connection

Characteristics

- Interior
- High performance dispersion based adhesive Instant tack 100kg/sqm.
- Low odour
- Environment friendly

Technical data

Final strength:	Approx. 4.0N/mm ² (Shear strength wood/wood at room temperature)
Gap filling tolerance:	Max. 10mm
Density:	Approx. 1.30g/cm ³
Color:	White
Application temperature:	For application above 10
Open time:	Approx. 15min.
Setting time:	at least 48h, prolonged at higher layer thickness
Dilution:	Pattex Construction Adhesive is ready for use and no dilution necessary.
Consumption:	Decoration and sound insulation plates: Approx. 200~400g/m ²

Coverage: Decoration beams, wood panels: 20~40g per meter A cartridge of 400g covers approx. 14m

Directions for use

Application surface:

Pattex Construction Adhesive is suitable for the following surfaces: plaster surface (indoor), concrete, fiber concrete, pumice, cardboard, gypsum floorboard, wood materials and polyurethane rigid-foam (indoor).

Surface preparation:

To ensure ideal adhesive setting one of the two bonding surfaces must be absorbent.

Keep surfaces clean, dry and free of dust and grease.

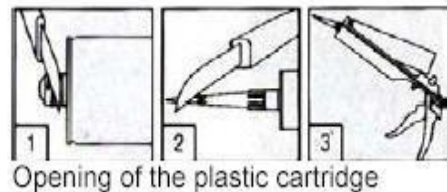
Clean surfaces thoroughly. Remove loose coatings and wallpapers.

Application:

For bonding small size areas spread Pattex Construction Adhesive with a spatula.

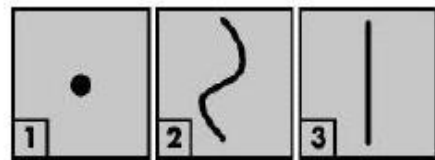
For bonding of broader areas, open the cartridge on top of the thread. Screw on plastic nozzle and diagonally cut off the tip of the nozzle.

If for wall application, please don't use horizontal continuous application method for avoiding the adhesion failure caused by the water accumulation.



Apply adhesive onto one of the surfaces:

In spots (1) in order to smooth uneven surfaces, in wave-like form (2) for higher initial tack with wide surfaces or in straight strands for smaller surfaces (3). Release gun after appliance to stop adhesive from flowing.



1). Bonding of panels, plastic decoration details, acoustic panels etc.:

Place panel 1-2cm off the bonding spot, then pushes into correct position and press well.

If necessary, support heavy materials with decorative nails.

If the underground is smooth and sound, bond panels directly. For uneven surfaces we recommend creating an under-construction with small wooden panels or rigid polystyrene or polyurethane foam stripes. (Width: 5-10 cm, thickness: 5-20 cm, distance between stripes: 30-65 cm, depending on the panels to be bonded). Fix under-construction before laying the panels.

2). Fastening of door frames:

Insert door frame, adjust and wedge at the upper side. Apply Pattex Construction Adhesive to 3 spots on each side in height of the mountings. If the gap size between walls and frame is more than 2cm, fix

distance blocks before inserting the frame.

. Important remarks

Attention:

Not recommended for damp or continuously wet area. Not suitable for fixing mirrors. Pre-test plastic to determine suitable bonding. Adheres well to UPVC, not suitable for polyethylene and polypropylene.

Bonds are not water-resistant.

Not recommended for outdoor use.

Caution:

When the application temperature <10 and / or humidity $>80\%$, it will make influence for the effect of the product, not recommended to be used under this condition. Please consults technician.

Removal of adhesive remnants:

Immediately remove any adhesive remnants with damp cloth.

Precautionary measure:

Keep out of reach of children

Storage:

Store in a dry, cool and frost-free place for 12 months. Prevent frost.

Standard:

Q/STHG 027

The information contained herein is general and not intended to be specific to any substrate, project or product system. The information is based on our experience to-date and the results of continuous and careful testing. Varying conditions and methods of use will influence the practical application of this product. The products optimum performance is also dependent upon the professional judgment of the user and their conformity to proper trade practice, relevant standards and codes practice for installation, which are factors outside of our control.