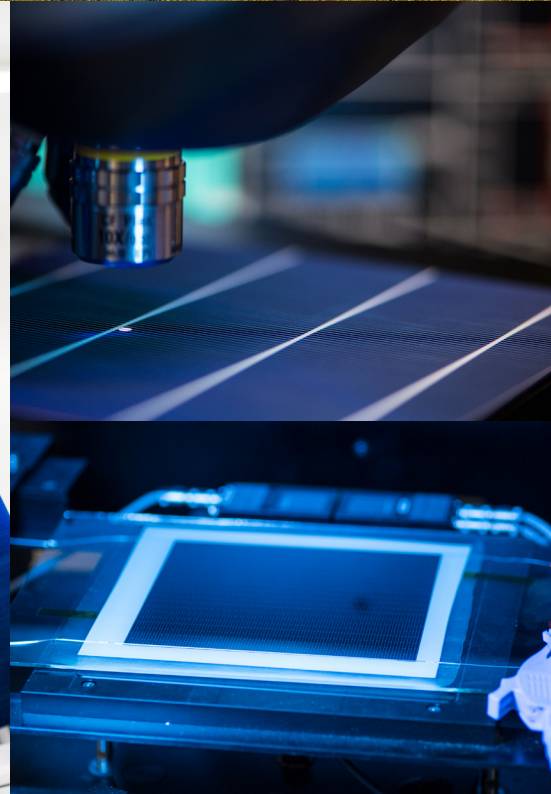
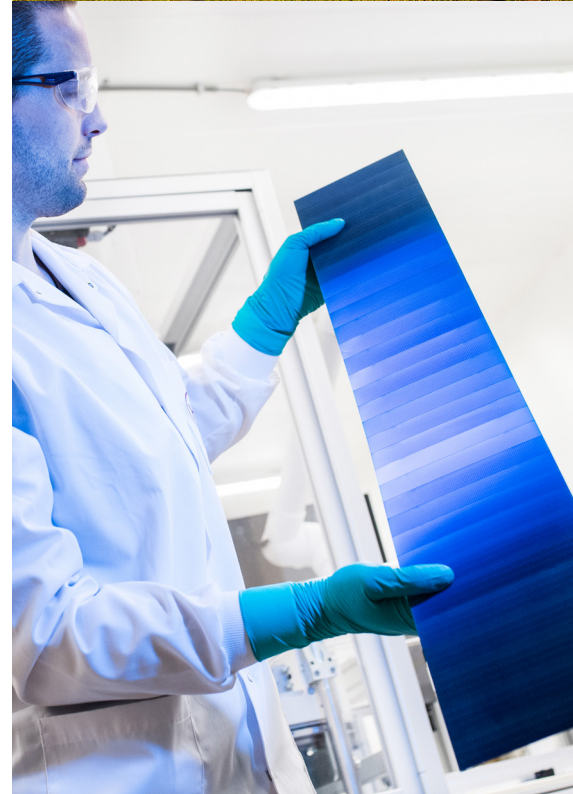


LOCTITE®

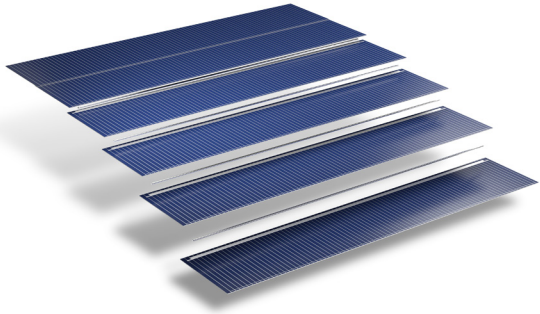
ENABELING THE NEXT GENERATION OF **SOLAR** **MODULE** DESIGNS

Henkel at a Glance:

- More than 60 years presence in ECA market
- Largest portfolio of ECA chemistry
- Best-in-class technical support
- Proprietary chemistry and processes optimized for Solar
- Global high volume manufacturing footprint



LOCTITE ABLESTIK ICP 8000 Series



For Shingled Solar Modules

- Designed for improved production speeds and reliability
- Excellent adhesion strength
- Enable a long module lifetime
- Lower total cost of ownership



For Heterojunction Ribbon Attach

- Increase power output and reliability
- Wide process window of open-time and work-life
- High speed printing and dispensing
- Highly conductive and durable over time

CONTACT US

Henkel AG & Co. KGaA
Henkelstraße 67
40589 Düsseldorf/Germany
E-mail: industrials@henkel.com



www.henkel-adhesives.com/solar

The information provided herein, especially recommendations for the usage and the application of our products, is based upon our knowledge and experience. Due to different materials used as well as to varying working conditions beyond our control we strictly recommend to carry out intensive trials to test the suitability of our products with regard to the required processes and applications. We do not accept any liability with regard to the above information or with regard to any verbal recommendation, except for cases where we are liable of gross negligence or false intention. The information is protected by copyright. In particular, any reproductions, adaptations, translations, storage and processing in other media, including storage or processing by electronic means, enjoy copyright protection. Any exploitation in whole or in part thereof shall require the prior written consent of Henkel AG & Co. KGaA. Except as otherwise noted, all marks used in this document are trademarks and/or registered trademarks of Henkel and/or its affiliates in the US, Germany, and elsewhere. © Henkel AG & Co. KGaA, 9/2022

