

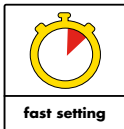
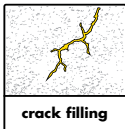
Polyinject Stop

Two component, fast setting polyurethane injection foam

PU injection foam to stop water leakage/flow from concrete and masonry structures

CHARACTERISTICS

- ▶ Multi component
- ▶ Potlife adjustable with catalyst
- ▶ Can be injected with 1-component pumps
- ▶ Foam formation



DESCRIPTION

Polyinject Stop is a two component, phthalate-free, water activated fast foaming resin, which is used as a water stop system. The component B serves as a catalyst, in lower dosage it leads to a prolongation of the reaction time. Through contact with water Polyinject Stop reacts very fast to a foam with closed cellular pores and shape-retaining properties. After curing the material does not shrink

FIELDS OF APPLICATION

Polyinject Stop is used as a fast water stop system, in cracks, crevices in construction above and below ground level. Typical applications are tunneling, basement, water tanks and water retaining structures.

APPLICATION INSTRUCTIONS

Surface preparation

If the water flow allows the surface should be stable and free of separating substances. Insufficiently firm layers and concrete slurry must be removed. Especially when applying surface packers and in case that the crack will be sealed, the substrate must be sufficiently prepared.

Work Preparation

Polyinject Stop has to be applied with injection packers. The injection packers may be fixed into holes drilled directly into the crack or drilled diagonally from concrete adjacent to the crack or by the fixing of injection nipples bonded to the surface using Polyquick or Polyquick FS.

For further assistance and instructions regarding the packer fixing and design please refer to our Method Statement.

Injection

Polyinject Stop is a multi-component resin, which is injected into the water-carrying areas with pneumatic, electrical or



TDS_Polyinject Stop_GCC_0519

1

hand-operated 1-component pumps. Take care to exclude moisture as much as possible and place the mixed material in an enclosed container after mixing. To decrease the potlife, up to 10% of catalyst can be added and mixed into Polyinject Stop. The mixture of Polyinject Stop and catalyst lasts approx. 8 hours. A skin can form on the liquid surface through reaction with water, which does not influence the processing of the material. Only mix sufficient resin that can be used within the pot life of the material. When flowing water has been stopped, reinject with Polyinject PU+ or any other suitable injection resin out of the Polyinject range to produce a permanent seal. For further information refer to the concerned datasheet permanent seal. For further information refer to the concerned datasheet.

CLEANING

Remove packers (if used) once Polyinject Stop is fully cured and make good any holes or voids with Pattex CF1000 or Polypoxy BF and allow to cure. Polyinject Stop, Pattex CF1000 and Polypoxy BF should be removed from tools, equipment and mixers with an appropriate solvent immediately after use. Hardened material can only be removed mechanically.

STORAGE & SHELF LIFE

Store all material between 10°C and 25°C in a cool, covered dry place. Do not expose the containers to direct sunlight and keep away from all sources of heat. In tropical climatic conditions, the product has to be stored in an air-conditioned environment and protected from high humidity. The product is best performing when consumed within 6 months from manufacturing. Exposure to high temperature and humidity will result in considerable deterioration of the product and reduce its shelf life.

HEALTH & SAFETY

As with all construction chemical products caution should be always be exercised whilst usage. Protective clothing such as gloves and goggles should be worn. Treat any splashes to the skin or eyes with fresh water immediately and seek medical advice. Should any of the product be accidentally swallowed do not induce vomiting, but call for medical assistance immediately. Ensure that the container is available for medical attendant to examine any relevant instructions and contents details. For any further information please refer to the Material Safety Datasheet.

SUPPLY

Polyinject Stop	11 kg kit
-----------------	-----------

TECHNICAL PROPERTIES

PROPERTIES	VALUES
Consistency	Liquid
Color	Component-A: brown Component-B: transparent
Odor	Characteristic
Density	Approx. 1.2 g/cc
Processing temperature	5°C - 40°C (component part temperature)
Form of delivery	50 units per pallet
Mixing ratio	10:1 by volume and weight parts
Packaging	Comp. A : 10 kg metal canister Comp. B : 1 kg (catalyst) metal canister

All values given are subject to 5-10% tolerance

Apart from the information given here it is also important to observe the relevant guidelines and regulations of various organisations and trade associations as well as the respective standards. The aforementioned characteristics are based on practical experience and applied testing. Warranted properties and possible uses which go beyond those warranted in this information sheet require our written confirmation. All data given was obtained at an ambient and material temperature of +23°C and 50 % relative air humidity at laboratory conditions unless specified otherwise. Please note that under other climatic conditions hardening can be accelerated or delayed.

The information contained herein, particularly recommendations for the handling and use of our products, is based on our professional experience. As materials and conditions may vary with each intended application, and thus are beyond our sphere of influence, we strongly recommend that in each case sufficient tests are conducted to check the suitability of our products for their intended use. Legal liability cannot be accepted on the basis of the contents of this data sheet or any verbal advice given, unless there is a case of wilful misconduct or gross negligence on our part. This technical data sheet supersedes all previous editions relevant to this product.