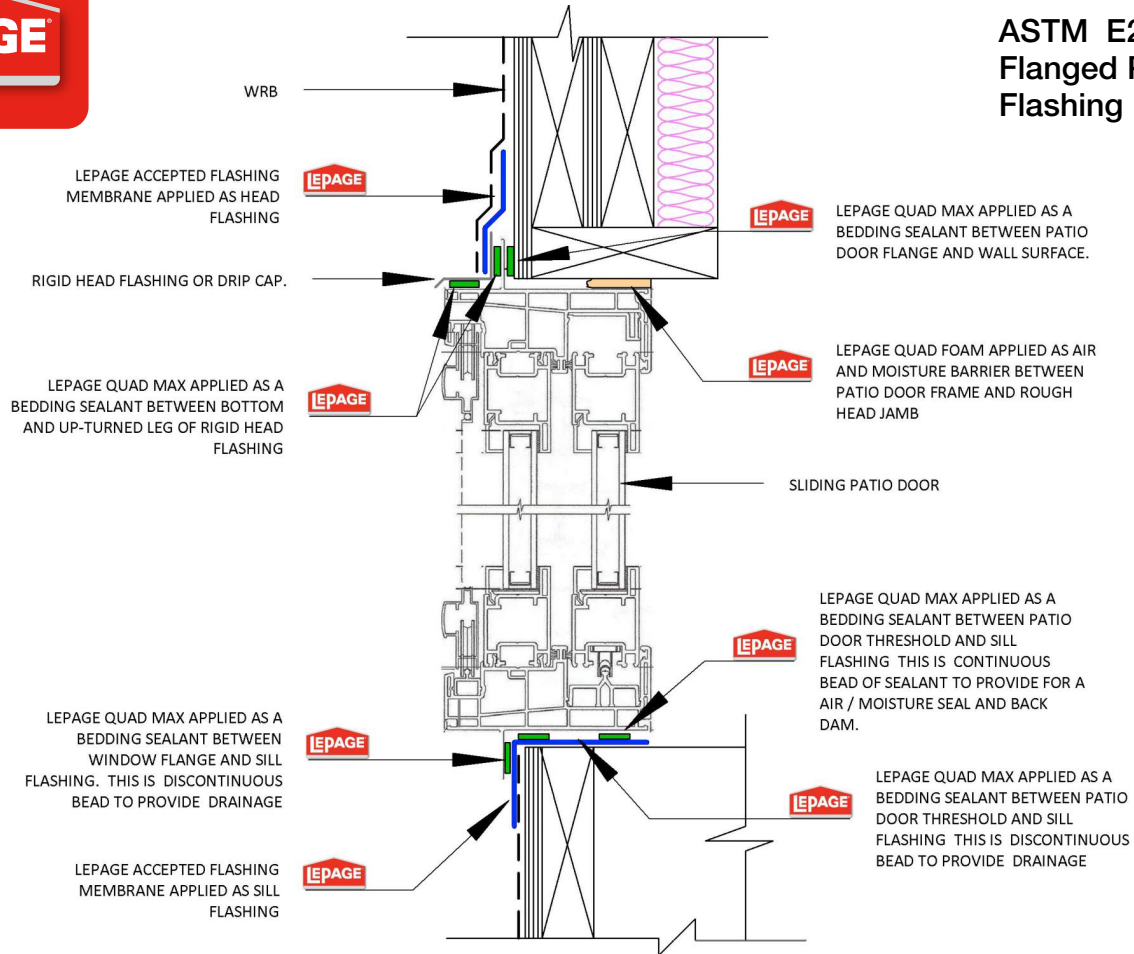




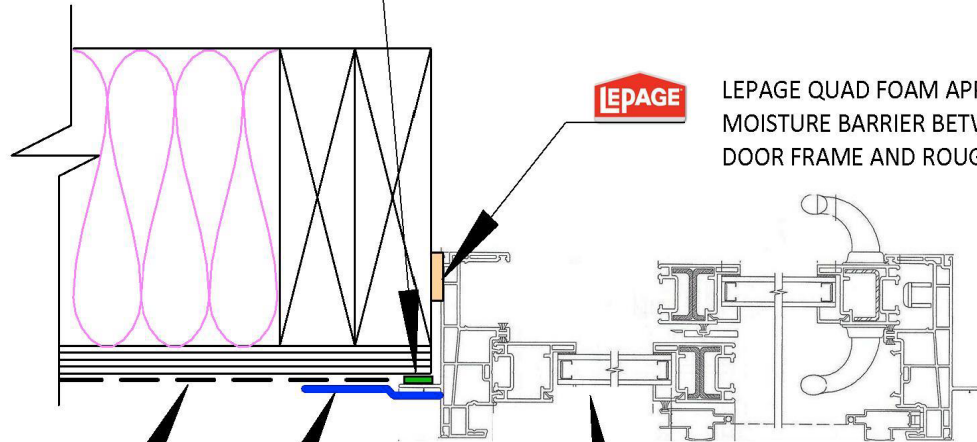
ASTM E2112 A1 Flanged Patio Door Flashing Install





ASTM E2112 A1 Flanged Patio Door Flashing Install

LEPAGE QUAD MAX APPLIED AS A
BEDDING SEALANT BETWEEN PATIO
DOOR FLANGE AND WALL SURFACE.



LEPAGE QUAD FOAM APPLIED AS AIR AND
MOISTURE BARRIER BETWEEN PATIO
DOOR FRAME AND ROUGH SIDE JAMB

WRB

LEPAGE ACCEPTED FLASHING
MEMBRANE APPLIED OVER PATIO
DOOR FLANGE AND WRB



SLIDING PATIO DOOR



ASTM E2112 A1 Flanged Patio Door Flashing Install

