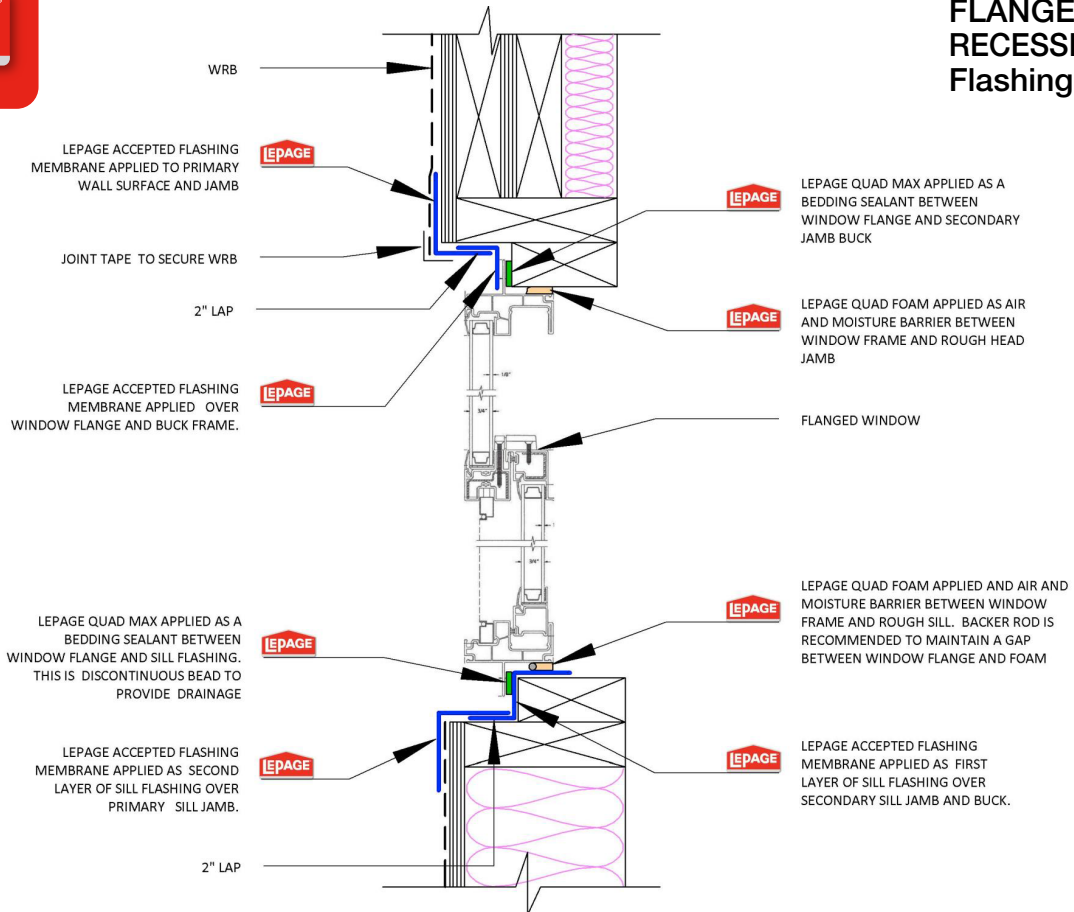




FLANGED WINDOW IN A RECESSED FRAMED OPENING Flashing Install



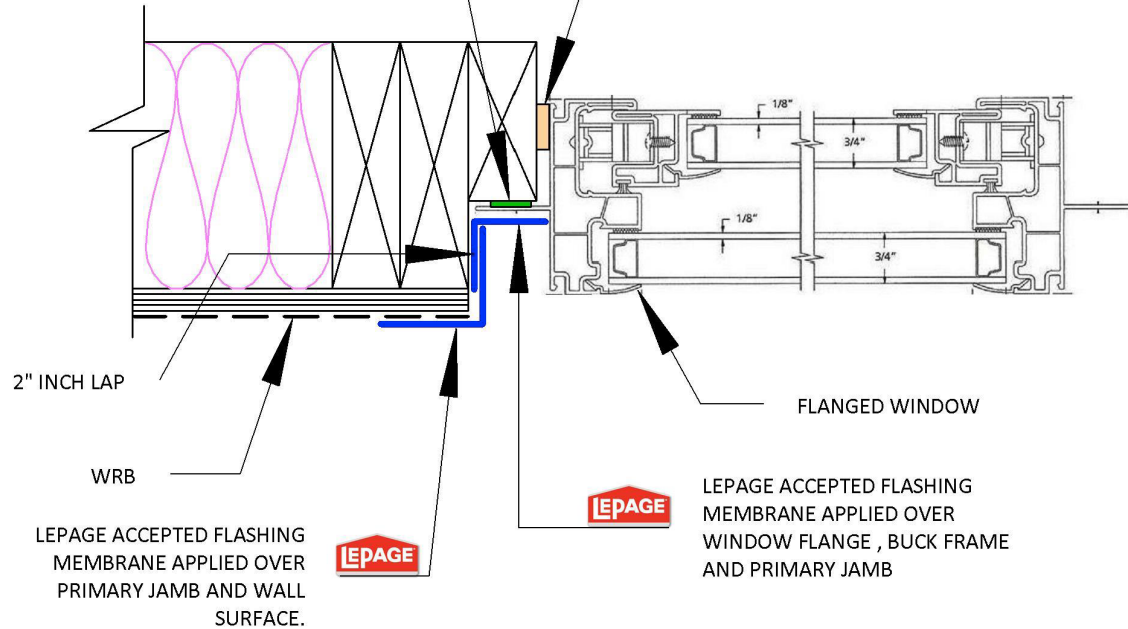


FLANGED WINDOW IN A RECESSED FRAMED OPENING Flashing Install

LEPAGE QUAD MAX APPLIED AS A
BEDDING SEALANT BETWEEN WINDOW
FLANGE AND BUCK FRAME



LEPAGE QUAD FOAM APPLIED AS AIR
AND MOISTURE BARRIER BETWEEN
WINDOW FRAME AND ROUGH FRAME



2" INCH LAP

WRB

LEPAGE ACCEPTED FLASHING
MEMBRANE APPLIED OVER
PRIMARY JAMB AND WALL
SURFACE.



FLANGED WINDOW



LEPAGE ACCEPTED FLASHING
MEMBRANE APPLIED OVER
WINDOW FLANGE , BUCK FRAME
AND PRIMARY JAMB



FLANGED WINDOW IN A RECESSED FRAMED OPENING Flashing Install

