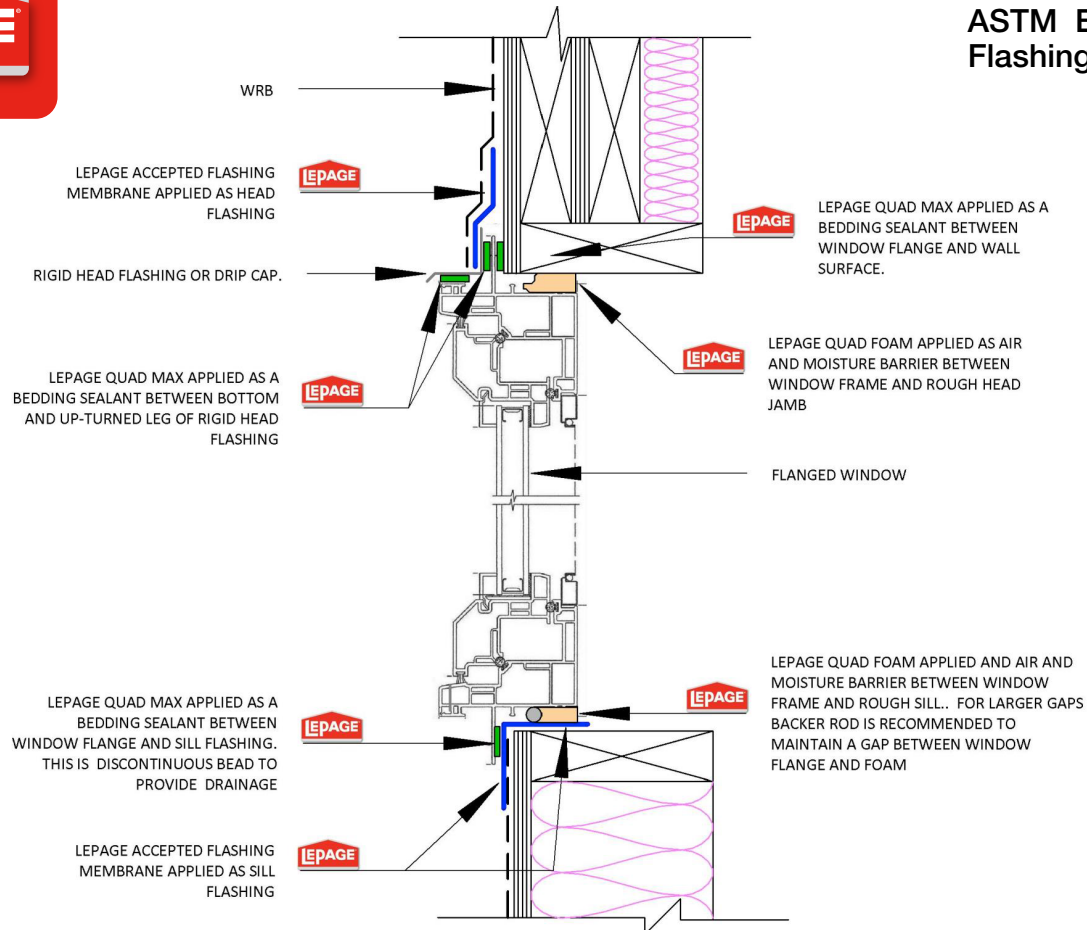




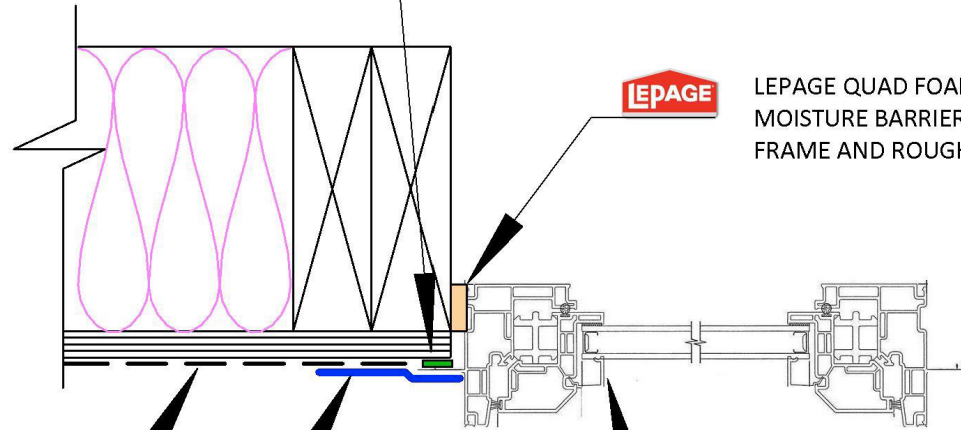
ASTM E2112 A1 Flashing Install





ASTM E2112 A1 Flashing Install

LEPAGE QUAD MAX APPLIED AS A
BEDDING SEALANT BETWEEN WINDOW
FLANGE AND WALL SURFACE.



LEPAGE QUAD FOAM APPLIED AS AIR AND
MOISTURE BARRIER BETWEEN WINDOW
FRAME AND ROUGH SIDE JAMB



WRB

LEPAGE ACCEPTED FLASHING
MEMBRANE APPLIED OVER
WINDOW FLANGE AND WRB



FLANGED WINDOW



ASTM E2112 A1
Flashing Install

