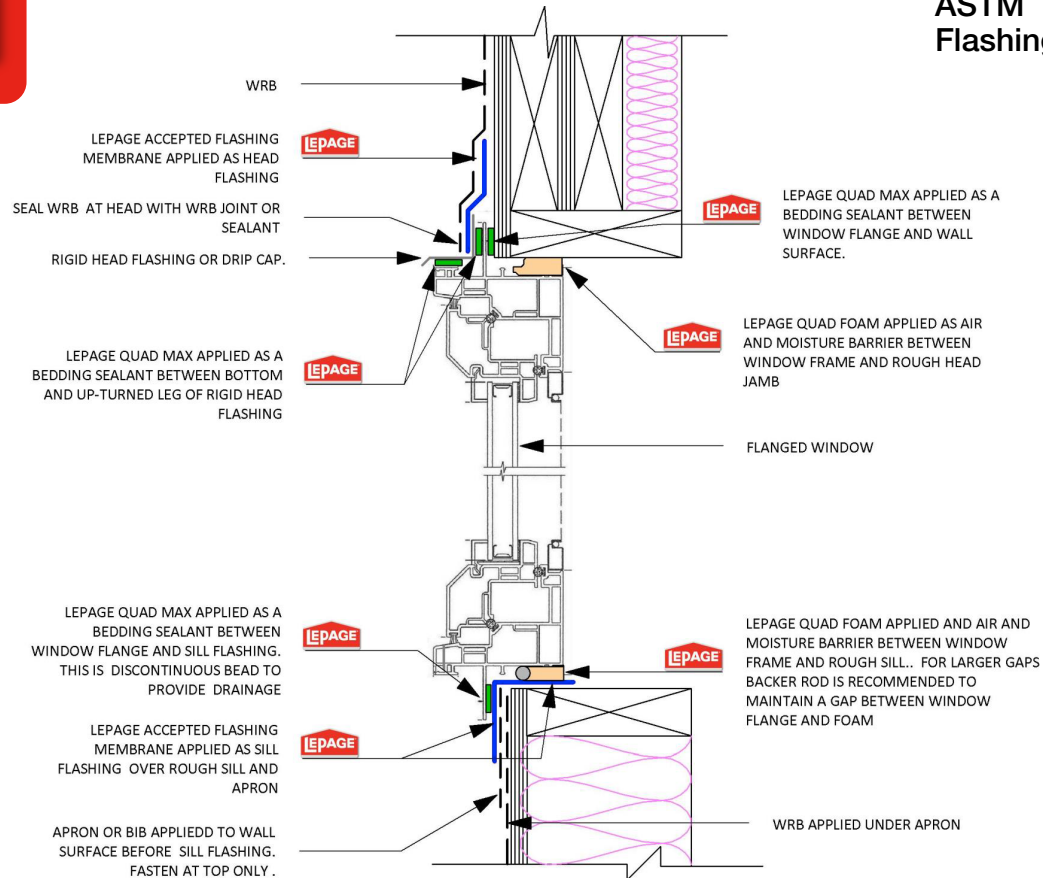




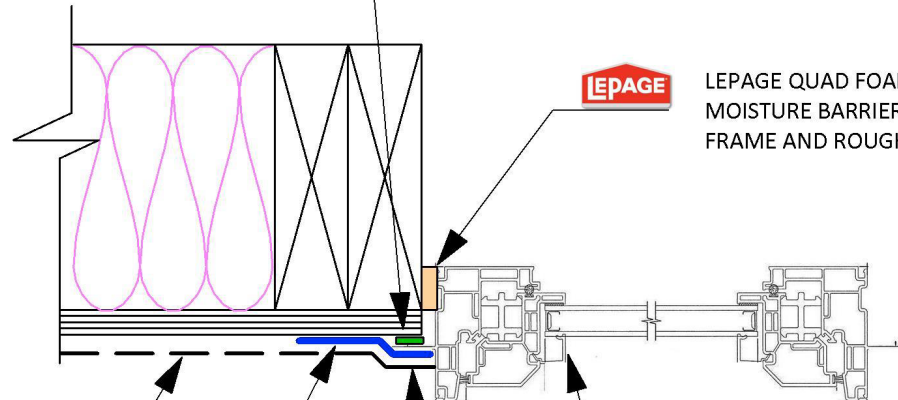
ASTM E2112 A Flashing Install





ASTM E2112 A Flashing Install

LEPAGE QUAD MAX APPLIED AS A BEDDING SEALANT BETWEEN WINDOW FLANGE AND WALL SURFACE.



LEPAGE QUAD FOAM APPLIED AS AIR AND MOISTURE BARRIER BETWEEN WINDOW FRAME AND ROUGH SIDE JAMB

WRB APPLIED OVER SIDE JAMB FLASHING TAPE

LEPAGE ACCEPTED FLASHING MEMBRANE APPLIED OVER WINDOW FLANGE AND WALL SHEATHING



FLANGED WINDOW

SEAL WRB TO FLASHING TAPE WITH WRB JOINT TAPE OR SEALANT

