

Ceresit



Follow your facade vision with Ceresit

Colours of Nature Architects Colours System
for smart and trendy facade designing

NEW EDITION

ARCHITECTS

Colour System



Quality for Professionals



Your vision, our colours

We are happy to present **Colours of Nature Architects Colour System** – a unique concept of colour smart matching for facades. It is based on extended Colours of Nature palette of 511 colours dedicated for Ceresit acrylic, silicate-silicone, silicone, silicate, elastomeric plasters and acrylic, silicone, silicate, elastomeric paints. This colour system has been designed as a complete styling tool for professionals to allow them easily create facade projects in accordance with the latest colour trends and building relevance.

To better support architecture needs in terms of colour combining, colour palette has been divided into:

- **4 colouristic groups** referring to the source of inspiration taken from the nature.
- **6 distinctive styles** according to hues and corresponding with different architectural approaches to reflect certain feelings and evoke moods.
- **9 colour types** focusing on chroma, lightness and grey level to make the effects of colours choice and matching even more smart and appealing.

This multilevel concept has been described sequentially in the brochure. It is followed by advanced styling tips and colour smart combinations – a compilation of colours, their types and styles best matching for particular type of the building. Finally, full palette of colours is introduced by some visualizations of possible final effects on the facade.

Ceresit solutions presented in the brochure are just proposals. They can be helpful during facade designing process, but do not limit architects' creativity. Colours of Nature Architects Colour System palette gives professionals vast possibilities of individual facade finishing – each one can actually obtain unique final effect adopted to personal vision.





Get inspired by Colours of Nature

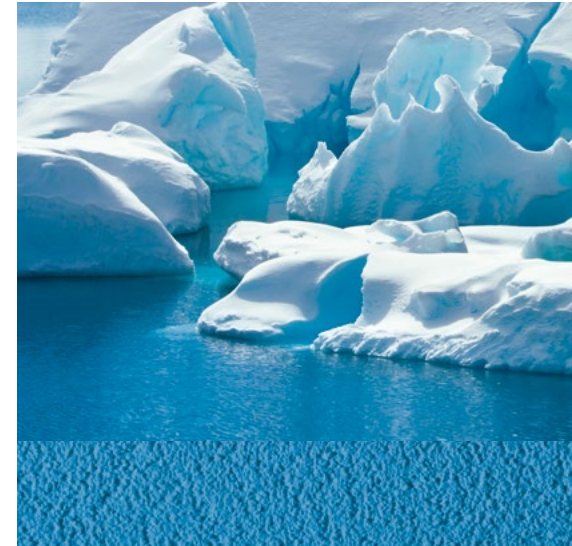
Colours of Nature is a collection of Ceresit plasters and paints' colours inspired by the beauty of nature, which abounds with affluence of colours from delicate blues of the oceans and seas, sunny yellows and oranges of beaches, deserts, through intense red-brown earthy shades to the calm greens of forests and hills.

To give architects even more possibilities of facade finishing, Colours of Nature palette has been extended by additional 300 colours which perfectly complement previous 211 building smart colour range and flow. New wider colouristics correspond with both the current and future colour trends and is most suited for building facades. Now Colours of Nature Architects Colour System includes 85 colour lines, each representing 6 shades, divided into 4 groups: WATER, SAND, EARTH and FOREST.

NEW EDITION



Colour System



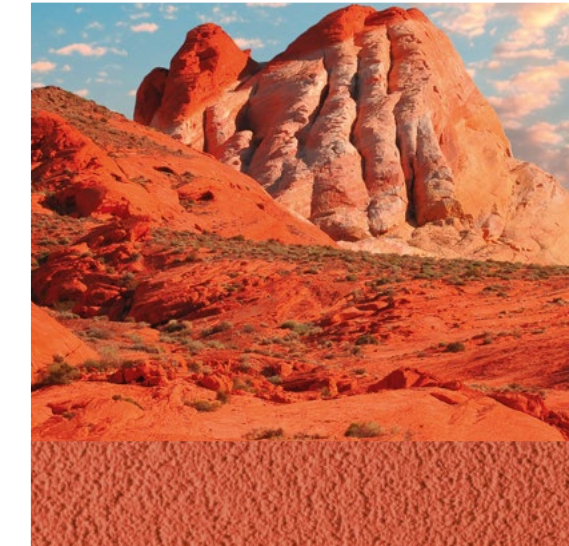
WATER

Oceans and seas, freshness and clearness. This is the blue colour that brings peace and comfort with the positive thinking. Within this group we give you a wide choice of shades from very fair blues to the most intensive ones. Choose the clear blue of Pacific, frosty beauty of Arctic or Antarctica, variations of trendy blue-gray from Azores and Bermudas, deep blue of Polynesia waters or tones inspired by other exotic islands like Hawaii or Samoa.



SAND

California and Ibiza sunny landscapes, Barbados and Jamaica beaches, volcanic, grey sands of Stromboli island and vast deserts of the world were the inspiration for this group of colours. Perfect choice for those who like warm, friendly yellows and fair beiges. These are the colours that stimulate optimism and joy of life and bring memories of sunny Crete or Majorca holidays.



EARTH

Andalusia and Umbria browns, pink rocks of Arizona and brown-orange tones straight from Calabria and Algarve are the examples of this largest colour group. It represents love for nature and tradition and the basic need of being close to the earth around you. Authentic colours like Nubia's brick red or fiery tones of Mexico and Capadoccia are always beautiful, regardless of quick fashions and moods.



FOREST

Peace, harmony and love for the nature. These are the greens of Montana or Sumatra landscape, Toscana hills, Borneo or Java jungle and many other beautiful regions of the world. Fair or dark, pure green or bluish – all these colours find their lovers. They will make each house a part of the nature and a harmonious element of local landscape.





Choose the style

All 511 colours from Colours of Nature palette have been divided into **6 distinctive styles, according to their hues.** They correspond with different architectural approaches to match the chosen style, securing consistency, synergy and optimal result perceived by human's eye and brain, reflecting certain feelings and evoking moods. This way each project design can be dedicated to one of the 6 styles and thus carefully followed with the support of recommended colour palette.

Each of **6 styles** has its symbol and name referring to architectural design and natural inspiration. For the most harmonious effect it is recommended to combine colours within the same style, that carry the same symbol. A little bit more daring but still a harmonious match is combining colours from 2 neighbouring styles. The rules of colour matching between the styles are presented on following pages.

URBAN GLAMOUR

A city elegance driven by artistic touch, together creating graceful and splendid effect. Style is completed by details of organic shapes and soft, floral motifs as well as carefully selected elegant, classical colours.



LAND OF SHAPES

Eye-catching play on lines and shapes in practical, modern architecture of cities and suburbs. Natural forms have been transformed into man-made parts and elements – it is nature re-worked and finished with smoky colours.



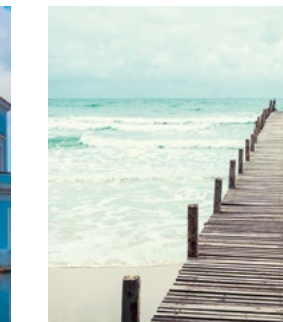
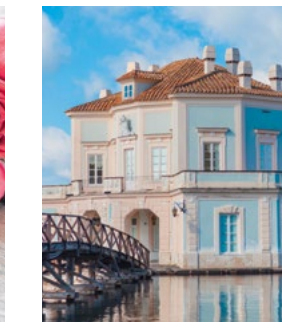
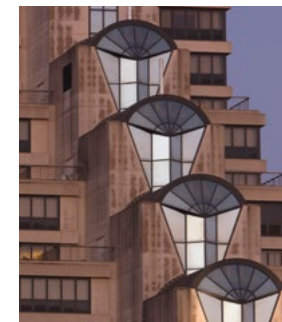
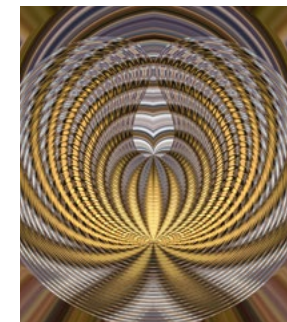
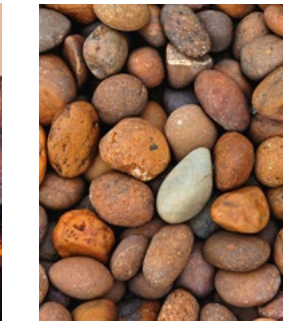
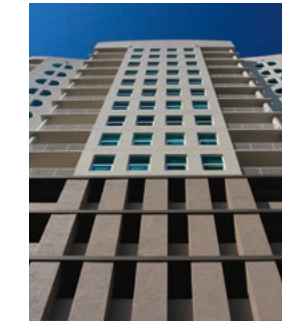
CITY LANDSCAPE

Style that wins with its timeless and classic character with pure and simple geometric shapes. Although formal and urban, with forms like rocky landscape and rich tones of green and earthy colours it also refers to nature.



LOVE OF NATURE

With handmade and organic designs supported by comforting tones this style directly expresses love of nature. Friendly and more casual simple shapes make this style perfect for town houses, weekend outings cottages and less formal objects.



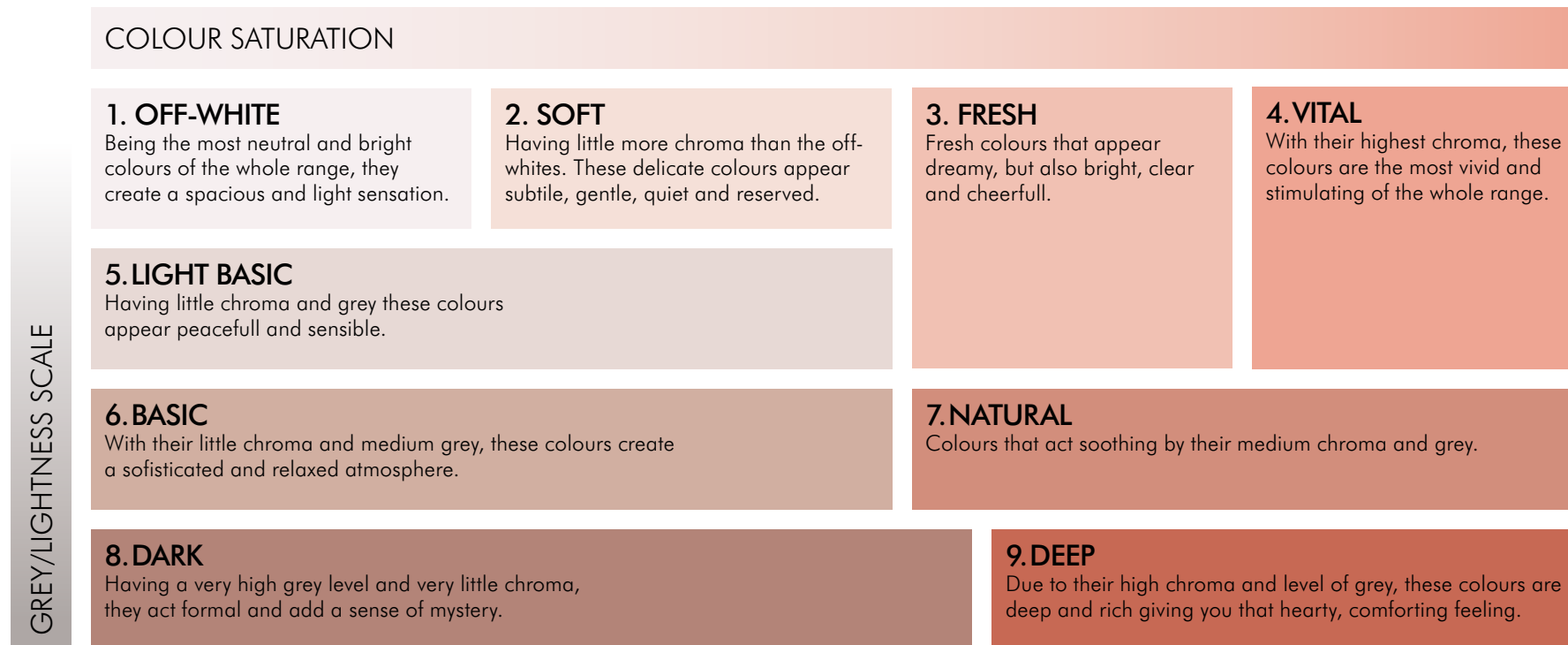


Follow your type

Colours can promote a certain mood that best complements the identity of the building, its purpose and the style. To make the effects of colours choice and matching more smart and appealing, we took the next step and divided the tones from Colours of Nature according to their chroma (intensity of hue) and lightness (level of lightness of the hue versus white and black), establishing 9 colour types and then naming them.

Smart combining of types according to rules of colour psychology, can strengthen the final message of the building and create synergetic effect between colour and facade form.

Table shows 9 colour types placed on chroma/ lightness scales in a simplified way, to better explain their mapping and differences. Each of the type is supplemented with information about the way those colours are perceived by man and impression they create.



Combining types suggestions

Colour combinations are more stimulating when increasing their contrast. This can be achieved by contrasting chroma, grey-level/lightness or a combination of both. Each of those contrasts can be created in different ways. Brochure presents just few examples, that do not describe every possibility.



EXAMPLE OF CHROMATIC CONTRAST OFF-WHITE – SOFT – FRESH – VITAL

These types have increasing colour saturation but very little influence of grey. Off-whites are neutral and light, while Vitals are eye catchers and stimulating. Combine them for the biggest chromatic contrast.

OFF-WHITE:	Chroma 0 – 11%	Lightness 100 – 84%
SOFT:	Chroma 3 – 24%	Lightness 92 – 80%
FRESH:	Chroma 8 – 38%	Lightness 89 – 69%
VITAL:	Chroma 16 – 58%	Lightness 87 – 56%

EXAMPLE OF GREY LEVEL CONTRAST OFF-WHITE – LIGHT BASIC – BASIC – DARK

These types have (nearly) equal chroma levels, but show an increase in grey level. Dark has the highest grey level, adding a lot of “weight”. Variation in grey level can be used to create colour contrasts. The biggest contrast in grey level is between the Off-whites and the Darks.

OFF-WHITE:	Chroma 0 – 11%	Lightness 100 – 84%
LIGHT BASIC:	Chroma 0 – 16%	Lightness 87 – 74%
BASIC:	Chroma 0 – 23%	Lightness 80 – 59%
DARK:	Chroma 0 – 24%	Lightness 67 – 41%

EXAMPLE OF COMBINATION CONTRAST OFF-WHITE – NATURAL – DEEP

Natural and Deep colours have balanced chroma and grey level. Their combination with Off-white creates a large contrast in chroma and grey level. Another examples of both contrasts, is e.g. Vital – Basic combination, Off-white – Deep – Fresh combination, Light basic – Fresh – Dark combination and Off-white – Basic – Vital combination.

OFF-WHITE	Chroma 0 – 11%	Lightness 100 – 84%
NATURAL	Chroma 16 – 41%	Lightness 83 – 53%
DEEP	Chroma 14 – 43%	Lightness 65 – 35%
DARK	Chroma 0 – 24%	Lightness 67 – 41%

STYLING TIP

Combine maximum 3 types on the same building. Try not to use the same type next to each other – it is better to have different type in between. Colours combination is just one of many factors which affect the final effect of the facade. The other influencers are: the proportions, volume of the coloured surface, materials, dimensions, to name but a few.

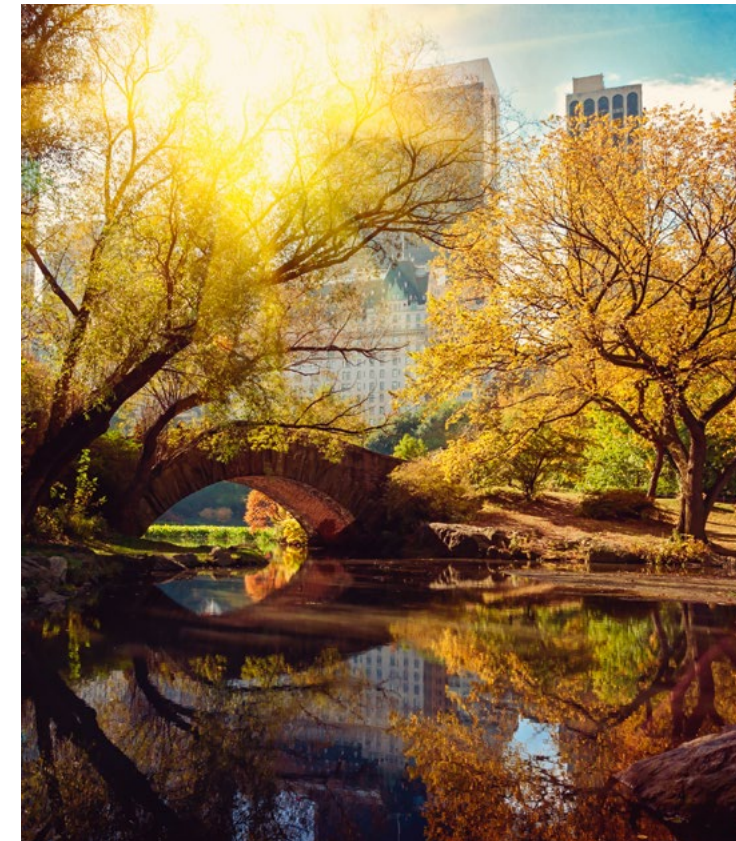
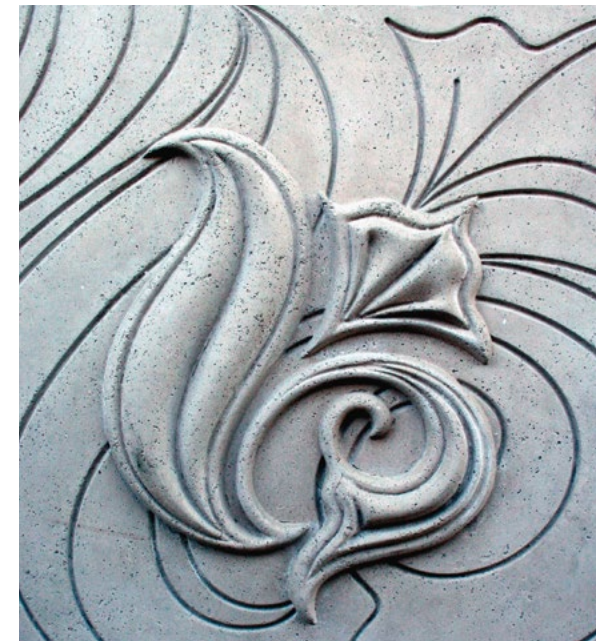


Urban glamour

Artistic look blended with the city elegance and nature inspired elements create graceful and splendid effect – suited for city mansions and manors or public buildings that need to emanate a certain type of solemnity, such as classical libraries, museums and theatres. Architectural details of this style remind us of rich and opulent natural world with its sophisticated forms and fascinating features.

To add a little of lightness to formal architecture, colours with low or medium grey level from Fresh and Basic type have been chosen mainly. Elegant, classical tones are completed by more cheerful brighter shades. The last ones come from world of plants illustrated by autumn landscape, city parks bathed in gold and fiery leaves. Colours assigned to Urban glamour style are taken from 2 Colours of Nature groups mostly: SAND, strongly represented by Sahara, Galapagos, Ibiza, Majorca, Corsica, Goa lines and EARTH with many brownish tones from Colorado, Texas, Nevada, Madeira, Algarve and Catalonia lines. This urban chic completed by details of organic shapes and soft, floral motifs as well as carefully selected shades is a celebration of taste, beauty and expression with a touch of drama to it.

Most harmonious colour matching within Urban glamour or with colour from neighboring styles: Land of shapes or Romantic story.





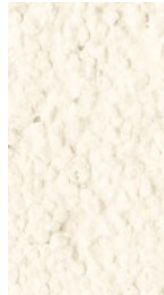
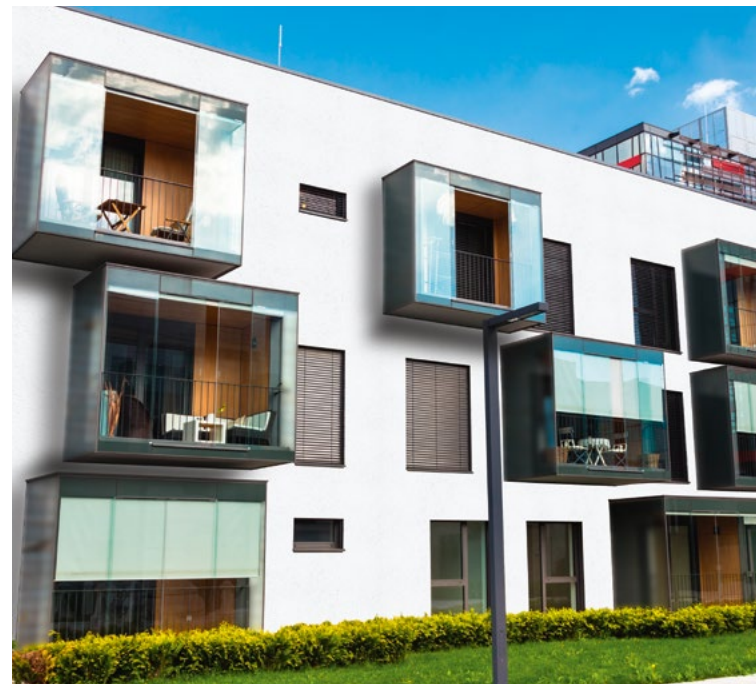
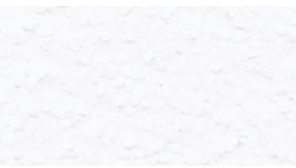
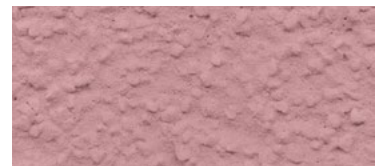
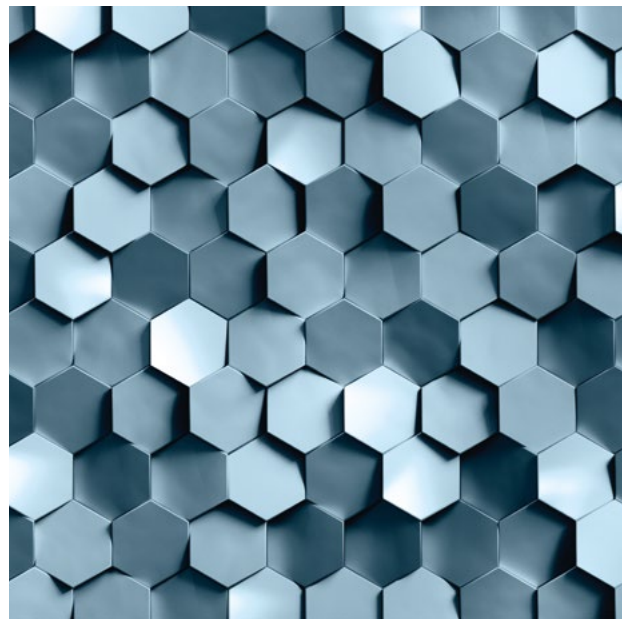
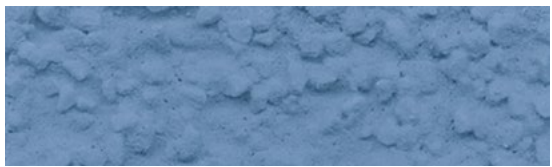
▲ Land of shapes

Patterns, dimensions and shapes are the basic benchmarks of this style. Natural forms have been transformed into man-made parts. Thus Land of shapes style can be defined as nature 're-worked' or 'organized'.

This eye-catching engineered style has been mostly finished with smoky colours from Soft and Fresh types – with medium saturation and low grey level. Sunny and beige colours come from SAND group strongly represented by Jamaica, Elba, Kalahari, and Madagascar lines. They are completed with EARTH and WATER tones where Scotland and Samoa lines are just an example. Violet, orange and golden tones bring joy and energy, while cool bluish and greyish shades highlight class and professionalism.

It is a perfect style for modern villas, condos and industrial buildings. The matching colours palette offers clarity and unity to the whole building.

Most harmonious colour matching within Land of shapes or with colour from neighbouring styles: City landscape or Urban glamour.





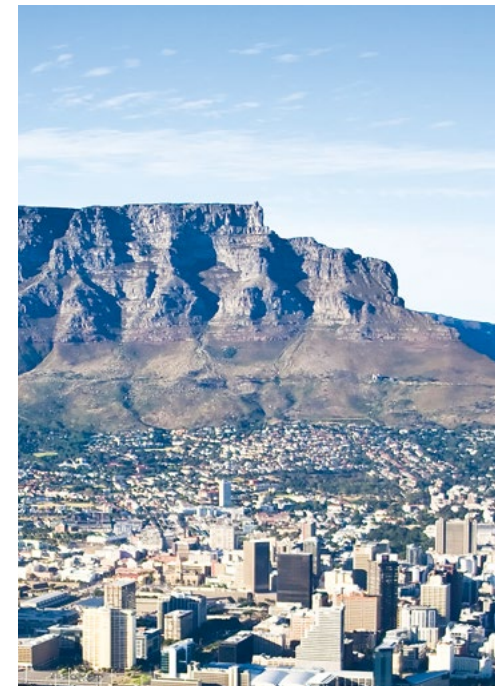
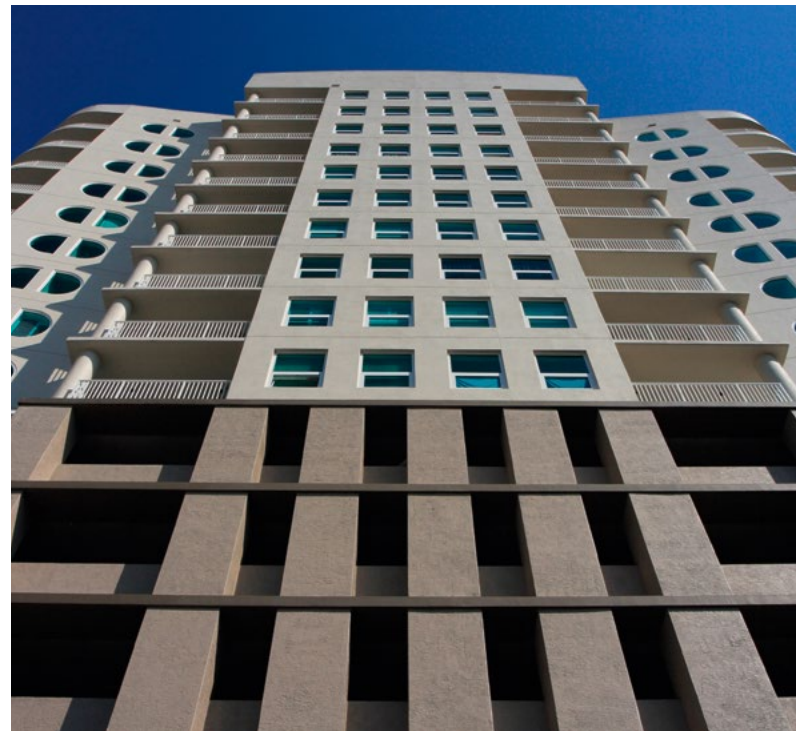
■ City landscape

This style can be matched to any environment that needs focus and formality. City landscape wins with its timeless and classic character, with its pure and simple geometric shapes. Although formal and urban, with forms like rocky landscape and rich tones of green and earthy colours it also refers to nature. Colours and shapes from the iconic scenery of the Wild West, far and mystic look of mountains and stones shaped in vertical, figurative forms are basic inspirations for this style.

Natural touch has been additionally underlined by selection of colours from 3 Colours of Nature groups. There is SAND group with many shades of yellow from Crete, California and Dakota lines at the head. FOREST group is represented by juicy green of Celebes, WATER with glacial Arctic line being complemented by strong red tones from Mexico, Gomera and Capadoccia lines. Bright colours from low grey level types: Off-white, Soft and Fresh outnumber in this stylization. This creates a spacious and light sensation.

For a powerful, static presence, undetailed and stark elements complement modern villas and fixed designs, multi-residential block of flats.

Most harmonious colour matching within City landscape or with colour from neighbouring styles: Creative waves or Land of shapes.





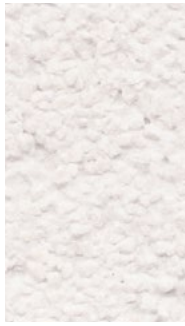
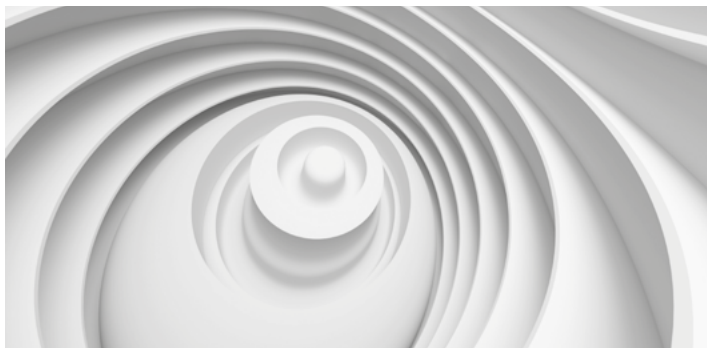
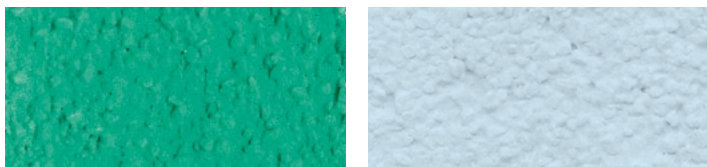
◆ Creative waves

As a very hybrid style, it brings contrasting shapes and lines to express its active and upbeat personality. These true eye-catchers are creative, visionary and emit positive vibes through their simple, smooth and rounded finishing and push the boundaries of what's thought possible. The basic inspirations for this style are: ocean's waves, smooth rocks formations and wavy green fields. Creative waves is like incredible moments or elements of nature captured and organized.

Young style is charged with energy and supported by fresh and progressive blue tones from WATER's Tahiti and Adriatic lines. There is strong group of colours with the highest chroma from Vital type – these tones are the most vivid and stimulating. Many intense EARTH tones – red, cherry and pink from Atacama and Oklahoma as well as brick red and orange from Utah line – bring more cosiness. Marine green tones from Oregon line recall ocean as an inspiration.

Creative waves is clearly a man-made style which gives its designs an artificial and technological side, without losing its organic, bouncing and innovative feel.

Most harmonious colour matching within Creative waves or with colour from neighbouring styles: Love of nature or City landscape.





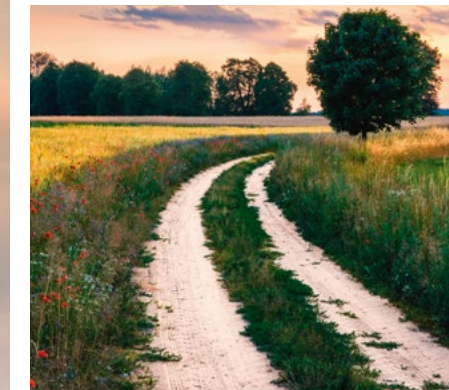
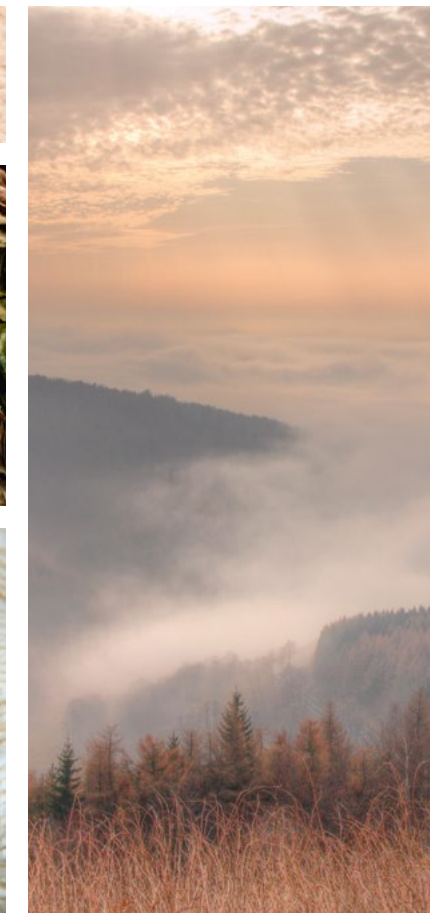
Love of nature

A very friendly and casual style that refers to natural environment and undisturbed and quiet places. It upholds handmade and organic designs with tactile, irregular finishings. Shapes are simple and hard-wearing.

Colours come from EARTH and FOREST groups and strongly refer to natural elements: brick red and brown Nubia and Indiana, tawny Umbria and beige Minorca are inspired by clay, mud and bark, while fresh green of Tasmania, olive green of Ceylon and khaki of Tundra lines comes from rich world of flora. Most colours of the style have a high level of grey to create a comforting and soothing feeling. Fresh and Basic types dominate in this style backed up by tones from Dark type. It gives off relaxed vibes, which make this style perfect for town houses, weekend outings cottages and less formal objects.

The colours in this style symbolize nature's rough and weathered elements such as grass, moss, bark, mud, clay, rock, leaves, wood, stones that age beautifully and also blue sky and water.

Most harmonious colour matching within Love of nature or with colour from neighbouring styles: Romantic story or Creative waves.





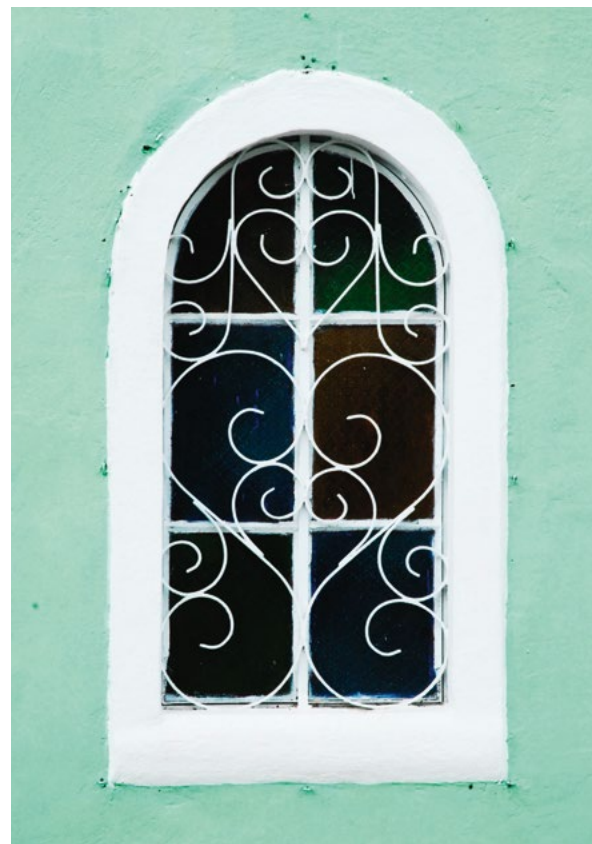
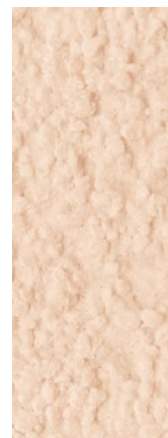
Romantic story

The most sensitive of all styles expresses bohemian lifestyle. Supported by subtle colours and fragile hues, delicately detailed designs are born that have a romantic spirit. Ornaments are fine, but abundant, complex and realistically refer to nature, especially the floral world. They recall fleeting beauty of cherry blossom and fineness of roses buds.

The style is full of low saturated tones from all 4 groups of Colours of Nature palette. Having little chroma those colours from Light basic and Basic types appear peaceful and sensible however sophisticated. Although this style has colours from all Colours of Nature groups, there is a strong representation of EARTH group with beige and grey from Yucatan and Catalonia as well as tawny tones of Madeira and Columbia. Green tones from Papua and Borneo lines are ambassadors of FOREST group.

Overall with its pale, soft tones, it produces a light and transparent look that can be regarded as feminine.

Most harmonious colour matching within Romantic story or with colour from neighbouring styles: Urban glamour or Love of nature.

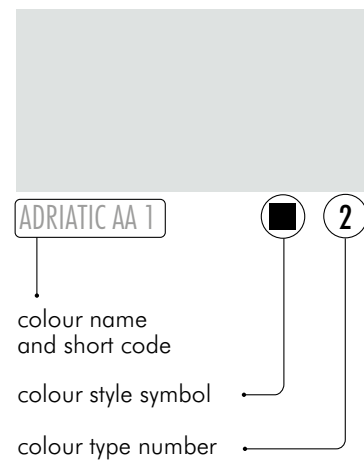


WATER

Colour System

WATER	SAND
EARTH	FOREST

HOW TO READ SYMBOLS



Presented colours palette refers to Ceresit plasters: acrylic, silicate-silicone, silicone, silicate, elastomeric and paints: acrylic, silicone, silicate and elastomeric. Due to printing techniques presented colours of all lines may vary from the original.

We suggest checking the authentic samples in the pattern book. Natural components may cause differences in final appearance of all plasters and paints, it is recommended to apply products with the same production batch number on one surface and working within the same conditions.

ADRIATIC AA 1 ■ 2	TAHITI TH 1 ■ 2	OCEANIA OC 1 ■ 2	POLYNESIA PS 1 ■ 3	PACIFIC PC 1 ■ 1
ADRIATIC AA 2 ◆ 3	TAHITI TH 2 ◆ 3	OCEANIA OC 2 ■ 3	POLYNESIA PS 2 ● 3	PACIFIC PC 2 ◆ 2
ADRIATIC AA 3 ◆ 3	TAHITI TH 3 ◆ 4	OCEANIA OC 3 ■ 3	POLYNESIA PS 3 ● 7	PACIFIC PC 3 ● 2
ADRIATIC AA 4 ◆ 4	TAHITI TH 4 ■ 9	OCEANIA OC 4 ■ 4	POLYNESIA PS 4 ● 9	PACIFIC PC 4 ● 3
ADRIATIC AA 5 ◆ 4	TAHITI TH 5 ■ 9	OCEANIA OC 5 ■ 4	POLYNESIA PS 5 ◆ 9	PACIFIC PC 5 ● 4
ADRIATIC AA 6 ◆ 4	TAHITI TH 6 ◆ 9	OCEANIA OC 6 ■ 4	POLYNESIA PS 6 ■ 9	PACIFIC PC 6 ● 4

SAMOA SA 1 ● 2	HAWAII HW 1* ▲ 2	ALASKA AL 1 ◆ 2	ATLANTIC AT 1 ▲ 1	BERMUDAS BM 1* ▲ 2	ARCTIC AI 1 ■ 1	AZORES AZ 1* ▲ 2	LANZAROTE LN 1 ● 1	ANTARCTICA AN 1 ■ 1
SAMOA SA 2 ▲ 3	HAWAII HW 2* ▲ 3	ALASKA AL 2 ● 6	ATLANTIC AT 2 ◆ 5	BERMUDAS BM 2* ▲ 2	ARCTIC AI 2 ■ 5	AZORES AZ 2* ▲ 2	LANZAROTE LN 2 ● 5	ANTARCTICA AN 2 ■ 1
SAMOA SA 3 ▲ 3	HAWAII HW 3* ▲ 4	ALASKA AL 3 ■ 3	ATLANTIC AT 3 ▲ 5	BERMUDAS BM 3* ▲ 5	ARCTIC AI 3 ■ 5	AZORES AZ 3* ▲ 6	LANZAROTE LN 3 ● 6	ANTARCTICA AN 3 ◆ 1
SAMOA SA 4 ▲ 7	HAWAII HW 4* ■ 7	ALASKA AL 4 ◆ 6	ATLANTIC AT 4 ● 6	BERMUDAS BM 4* ▲ 8	ARCTIC AI 4 ■ 6	AZORES AZ 4* ▲ 6	LANZAROTE LN 4 ▲ 6	ANTARCTICA AN 4 ● 1
SAMOA SA 5 ▲ 9	HAWAII HW 5* ■ 9	ALASKA AL 5 ▲ 5	ATLANTIC AT 5 ● 6	BERMUDAS BM 5* ▲ 8	ARCTIC AI 5 ■ 6	AZORES AZ 5* ▲ 8	LANZAROTE LN 5 ▲ 8	ANTARCTICA AN 5 ▲ 5
SAMOA SA 6 ◆ 9	HAWAII HW 6* ● 9	ALASKA AL 6 ■ 6	ATLANTIC AT 6 ● 6	BERMUDAS BM 6* ● 8	ARCTIC AI 6 ■ 8	AZORES AZ 6* ▲ 8	LANZAROTE LN 6 ▲ 8	ANTARCTICA AN 6 ● 5

SAND



ARCHITECTS

Colour System

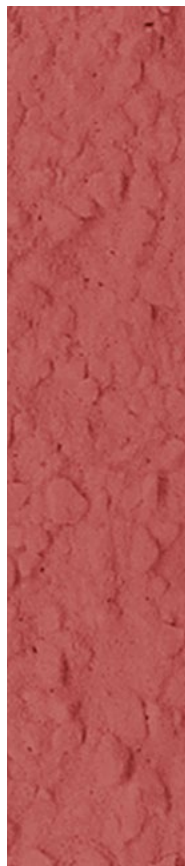
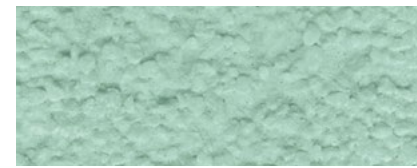
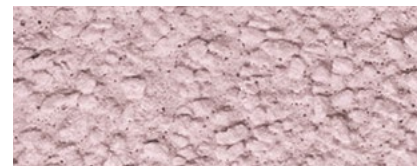
WATER	SAND
EARTH	FOREST

BARBADOS BA 1* ▲ 2	FLORIDA FL 1 ■ 2	GOA GA 1 ● 2	PHUKET PK 1* ● 1	KALAHARI KL 1 ▲ 2	JAMAICA JM 1 ▲ 1	MADAGASCAR MG 1 ● 2	GOBI GB 1 ■ 1	NAMIB NM 1 ▲ 2
BARBADOS BA 2* ● 3	FLORIDA FL 2 ▲ 3	GOA GA 2 ● 3	PHUKET PK 2 ● 2	KALAHARI KL 2 ▲ 3	JAMAICA JM 2 ▲ 2	MADAGASCAR MG 2 ▲ 3	GOBI GB 2 ■ 2	NAMIB NM 2 ▲ 2
BARBADOS BA 3* ● 3	FLORIDA FL 3 ● 3	GOA GA 3 ● 3	PHUKET PK 3 ● 3	KALAHARI KL 3 ▲ 3	JAMAICA JM 3 ▲ 3	MADAGASCAR MG 3 ▲ 3	GOBI GB 3 ■ 2	NAMIB NM 3 ▲ 3
BARBADOS BA 4* ● 4	FLORIDA FL 4* ▲ 3	GOA GA 4 ● 7	PHUKET PK 4 ● 3	KALAHARI KL 4 ▲ 4	JAMAICA JM 4 ▲ 4	MADAGASCAR MG 4 ▲ 3	GOBI GB 4* ▲ 3	NAMIB NM 4 ▲ 4
BARBADOS BA 5* ● 4	FLORIDA FL 5* ● 4	GOA GA 5 ● 7	PHUKET PK 5 ● 4	KALAHARI KL 5* ● 4	JAMAICA JM 5* ▲ 4	MADAGASCAR MG 5 ▲ 7	GOBI GB 5* ▲ 4	NAMIB NM 5 ▲ 4
BARBADOS BA 6* ● 4	FLORIDA FL 6* ● 4	GOA GA 6* ● 9	PHUKET PK 6* ● 4	KALAHARI KL 6* ● 4	JAMAICA JM 6* ▲ 4	MADAGASCAR MG 6 ▲ 7	GOBI GB 6* ▲ 4	NAMIB NM 6* ▲ 4

DAKOTA DK 1 ■ 3	CRETE CT 1 ■ 1	CALIFORNIA CF 1 ■ 3	CORSICA CC 1 ● 5	MAJORCA MJ 1 ● 5	IBIZA IB 1 ● 2	MALTA ML 1 ● 5	ELBA EB 1 ▲ 2	GALAPAGOS GP 1 ▲ 5
DAKOTA DK 2 ■ 3	CRETE CT 2 ■ 2	CALIFORNIA CF 2 ■ 3	CORSICA CC 2 ● 5	MAJORCA MJ 2 ▲ 5	IBIZA IB 2 ● 6	MALTA ML 2 ● 5	ELBA EB 2 ▲ 2	GALAPAGOS GP 2 ▲ 5
DAKOTA DK 3 ■ 3	CRETE CT 3 ■ 3	CALIFORNIA CF 3 ◆ 3	CORSICA CC 3 ● 6	MAJORCA MJ 3 ● 6	IBIZA IB 3 ● 6	MALTA ML 3 ● 5	ELBA EB 3 ▲ 6	GALAPAGOS GP 3 ▲ 5
DAKOTA DK 4* ■ 4	CRETE CT 4 ■ 3	CALIFORNIA CF 4 ■ 4	CORSICA CC 4 ● 6	MAJORCA MJ 4 ▲ 6	IBIZA IB 4 ● 7	MALTA ML 4 ● 6	ELBA EB 4 ▲ 6	GALAPAGOS GP 4 ▲ 6
DAKOTA DK 5 ▲ 4	CRETE CT 5 ■ 7	CALIFORNIA CF 5 ■ 4	CORSICA CC 5 ● 8	MAJORCA MJ 5 ● 6	IBIZA IB 5 ● 9	MALTA ML 5 ● 6	ELBA EB 5 ▲ 7	GALAPAGOS GP 5 ▲ 8
DAKOTA DK 6 ● 7	CRETE CT 6 ■ 4	CALIFORNIA CF 6* ▲ 4	CORSICA CC 6 ● 8	MAJORCA MJ 6 ● 8	IBIZA IB 6 ● 8	MALTA ML 6 ● 8	ELBA EB 6* ▲ 9	GALAPAGOS GP 6 ● 8



PAMPA PM 1	SAVANNE SV 1	SAHARA SH 1	REUNION RN 1	STROMBOLI ST 1	SANTORINI SN 1
PAMPA PM 2	SAVANNE SV 2	SAHARA SH 2	REUNION RN 2	STROMBOLI ST 2	SANTORINI SN 2
PAMPA PM 3	SAVANNE SV 3	SAHARA SH 3	REUNION RN 3	STROMBOLI ST 3	SANTORINI SN 3
PAMPA PM 4	SAVANNE SV 4	SAHARA SH 4	REUNION RN 4	STROMBOLI ST 4	SANTORINI SN 4
PAMPA PM 5	SAVANNE SV 5	SAHARA SH 5	REUNION RN 5	STROMBOLI ST 5	SANTORINI SN 5
PAMPA PM 6	SAVANNE SV 6	SAHARA SH 6	REUNION RN 6	STROMBOLI ST 6	SANTORINI SN 6



EARTH



SCOTLAND SL 1* ▲ 1	CAPADOCIA CP 1* ◆ 2	MEXICO MX 1* ▲ 3	OKLAHOMA OK 1* ◆ 1	UTAH UT 1 ◆ 3	ATACAMA AC 1 ■ 2	INDIANA IN 1 ● 2	NUBIA NA 1 ■ 3	CALABRIA CR 1 ● 2
SCOTLAND SL 2* ● 5	CAPADOCIA CP 2* ▲ 6	MEXICO MX 2 ■ 7	OKLAHOMA OK 2 ● 2	UTAH UT 2 ◆ 3	ATACAMA AC 2 ◆ 4	INDIANA IN 2 ■ 3	NUBIA NA 2 ■ 7	CALABRIA CR 2 ● 3
SCOTLAND SL 3* ▲ 6	CAPADOCIA CP 3* ▲ 7	MEXICO MX 3* ■ 7	OKLAHOMA OK 3 ◆ 3	UTAH UT 3* ◆ 4	ATACAMA AC 3 ◆ 4	INDIANA IN 3* ■ 4	NUBIA NA 3 ■ 7	CALABRIA CR 3 ● 3
SCOTLAND SL 4* ● 7	CAPADOCIA CP 4* ▲ 7	MEXICO MX 4* ■ 9	OKLAHOMA OK 4 ◆ 3	UTAH UT 4* ◆ 4	ATACAMA AC 4 ◆ 4	INDIANA IN 4* ■ 4	NUBIA NA 4 ■ 9	CALABRIA CR 4 ● 4
SCOTLAND SL 5* ▲ 9	CAPADOCIA CP 5* ■ 7	MEXICO MX 5* ■ 9	OKLAHOMA OK 5 ◆ 7	UTAH UT 5* ◆ 4	ATACAMA AC 5 ◆ 9	INDIANA IN 5* ■ 4	NUBIA NA 5* ■ 9	CALABRIA CR 5* ● 4
SCOTLAND SL 6* ▲ 9	CAPADOCIA CP 6* ■ 9	MEXICO MX 6* ■ 9	OKLAHOMA OK 6* ◆ 9	UTAH UT 6* ◆ 4	ATACAMA AC 6 ◆ 9	INDIANA IN 6* ■ 9	NUBIA NA 6* ◆ 9	CALABRIA CR 6* ■ 4

UMBRIA UM 1 ● 2	ALGARVE AV 1 ● 2	CATALONIA CN 1 ● 2	GOMERA GM 1 ● 5	FORMENTERA FR 1 ● 5	ASTURIA AS 1 ▲ 5	GALICIA GL 1 ◆ 5	MINORCA MN 1 ● 1	MADEIRA MD 1 ● 1
UMBRIA UM 2 ■ 3	ALGARVE AV 2 ● 2	CATALONIA CN 2 ● 5	GOMERA GM 2 ■ 3	FORMENTERA FR 2 ▲ 5	ASTURIA AS 2 ◆ 5	GALICIA GL 2 ▲ 5	MINORCA MN 2 ■ 5	MADEIRA MD 2 ● 5
UMBRIA UM 3 ● 7	ALGARVE AV 3 ● 3	CATALONIA CN 3 ● 6	GOMERA GM 3 ■ 3	FORMENTERA FR 3 ■ 6	ASTURIA AS 3 ◆ 3	GALICIA GL 3 ◆ 6	MINORCA MN 3 ■ 5	MADEIRA MD 3 ● 6
UMBRIA UM 4* ■ 9	ALGARVE AV 4 ● 3	CATALONIA CN 4 ● 6	GOMERA GM 4 ◆ 7	FORMENTERA FR 4 ◆ 7	ASTURIA AS 4 ◆ 7	GALICIA GL 4 ◆ 6	MINORCA MN 4 ● 6	MADEIRA MD 4 ● 6
UMBRIA UM 5* ■ 9	ALGARVE AV 5* ● 4	CATALONIA CN 5 ● 7	GOMERA GM 5 ■ 7	FORMENTERA FR 5 ◆ 8	ASTURIA AS 5 ■ 8	GALICIA GL 5 ◆ 8	MINORCA MN 5 ■ 8	MADEIRA MD 5 ● 6
UMBRIA UM 6* ■ 9	ALGARVE AV 6* ● 4	CATALONIA CN 6 ● 9	GOMERA GM 6 ◆ 8	FORMENTERA FR 6 ◆ 9	ASTURIA AS 6 ◆ 9	GALICIA GL 6 ◆ 8	MINORCA MN 6 ■ 8	MADEIRA MD 6 ● 6

EARTH

COLUMBIA CL 1 ▲ 1	PATAGONIA PT 1 ■ 5	ICELAND IC 1* ■ 1	TENERIFE TN 1 ■ 1	ARIZONA AR 1 ● 2	FUJI FJ 1 ▲ 1	NEVADA NV 1 ● 2	YUCATAN YC 1 ● 5	AFRICA AF 1 ▲ 1
COLUMBIA CL 2 ● 5	PATAGONIA PT 2 ● 5	ICELAND IC 2* ▲ 1	TENERIFE TN 2 ■ 5	ARIZONA AR 2 ■ 6	FUJI FJ 2 ■ 2	NEVADA NV 2 ● 3	YUCATAN YC 2 ● 2	AFRICA AF 2 ▲ 2
COLUMBIA CL 3 ● 6	PATAGONIA PT 3 ◆ 6	ICELAND IC 3 ● 5	TENERIFE TN 3 ■ 5	ARIZONA AR 3 ■ 6	FUJI FJ 3 ■ 3	NEVADA NV 3* ● 3	YUCATAN YC 3 ● 3	AFRICA AF 3 ● 6
COLUMBIA CL 4 ■ 6	PATAGONIA PT 4 ■ 6	ICELAND IC 4 ■ 6	TENERIFE TN 4 ▲ 6	ARIZONA AR 4 ■ 6	FUJI FJ 4 ■ 3	NEVADA NV 4 ● 3	YUCATAN YC 4 ● 6	AFRICA AF 4 ● 3
COLUMBIA CL 5 ● 8	PATAGONIA PT 5 ■ 8	ICELAND IC 5 ▲ 8	TENERIFE TN 5 ▲ 6	ARIZONA AR 5 ● 5	FUJI FJ 5 ■ 3	NEVADA NV 5 ■ 7	YUCATAN YC 5 ● 6	AFRICA AF 5 ● 6
COLUMBIA CL 6 ● 8	PATAGONIA PT 6 ■ 8	ICELAND IC 6* ▲ 8	TENERIFE TN 6 ▲ 6	ARIZONA AR 6 ■ 6	FUJI FJ 6 ■ 3	NEVADA NV 6 ◆ 8	YUCATAN YC 6 ● 8	AFRICA AF 6 ■ 8

TEXAS TX 1 ▲ 2	COLORADO CO 1 ● 3	ANDALUSIA AD 1 ■ 2	ZANZIBAR ZN 1* ■ 1
TEXAS TX 2 ● 3	COLORADO CO 2 ● 6	ANDALUSIA AD 2 ▲ 2	ZANZIBAR ZN 2* ■ 1
TEXAS TX 3 ● 3	COLORADO CO 3 ● 6	ANDALUSIA AD 3 ▲ 3	ZANZIBAR ZN 3* ■ 1
TEXAS TX 4 ● 6	COLORADO CO 4 ● 6	ANDALUSIA AD 4 ▲ 3	ZANZIBAR ZN 4* ● 1
TEXAS TX 5 ● 6	COLORADO CO 5 ▲ 5	ANDALUSIA AD 5 ● 7	ZANZIBAR ZN 5* ● 1
TEXAS TX 6 ■ 8	COLORADO CO 6 ▲ 6	ANDALUSIA AD 6 ▲ 7	ZANZIBAR ZN 6* ■ 1

FOREST



WATER	SAND
EARTH	FOREST

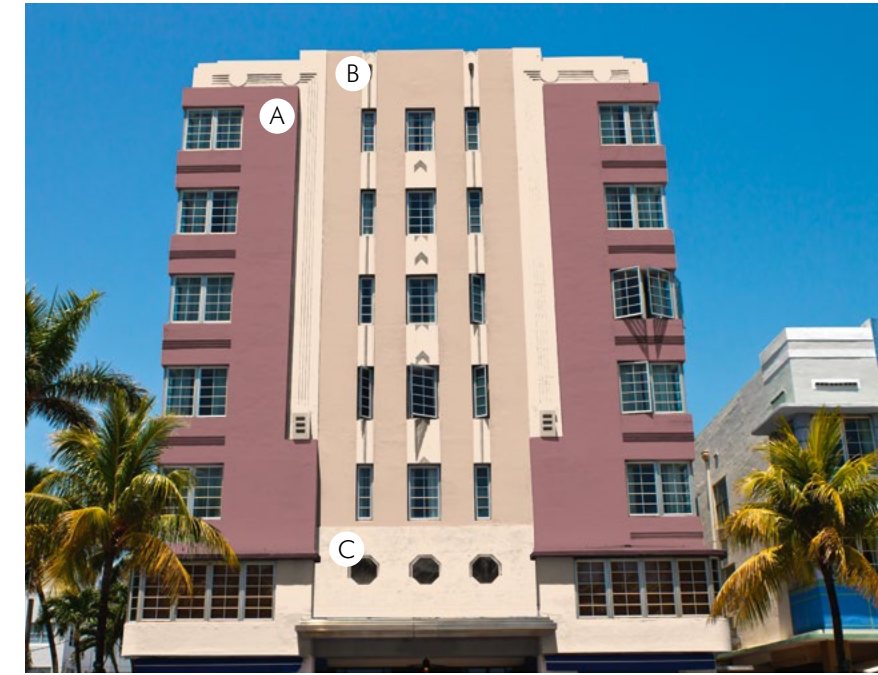
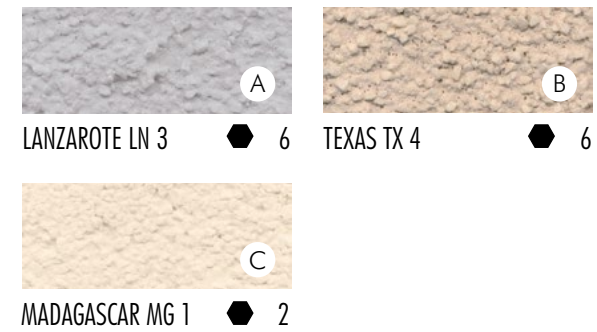
FLORES FS 1	CEYLON CY 1	BORNEO BR 1	SUMATRA SM 1	CELEBES CS 1	OREGON OR 1*	TASMANIA TS 1*	PAPUA PP 1	JAVA JV 1
FLORES FS 2	CEYLON CY 2	BORNEO BR 2	SUMATRA SM 2*	CELEBES CS 2	OREGON OR 2*	TASMANIA TS 2	PAPUA PP 2	JAVA JV 2
FLORES FS 3	CEYLON CY 3	BORNEO BR 3*	SUMATRA SM 3*	CELEBES CS 3	OREGON OR 3*	TASMANIA TS 3*	PAPUA PP 3	JAVA JV 3
FLORES FS 4	CEYLON CY 4*	BORNEO BR 4*	SUMATRA SM 4*	CELEBES CS 4*	OREGON OR 4*	TASMANIA TS 4*	PAPUA PP 4	JAVA JV 4
FLORES FS 5	CEYLON CY 5*	BORNEO BR 5*	SUMATRA SM 5*	CELEBES CS 5*	OREGON OR 5*	TASMANIA TS 5*	PAPUA PP 5	JAVA JV 5
FLORES FS 6*	CEYLON CY 6*	BORNEO BR 6*	SUMATRA SM 6*	CELEBES CS 6*	OREGON OR 6*	TASMANIA TS 6*	PAPUA PP 6	JAVA JV 6

TUNDRA TD 1	TOSKANA TK 1	MONTANA MT 1	VIRGINIA VR 1	SIBERIA SI 1	ETNA ET 1	NEBRASKA NB 1
TUNDRA TD 2	TOSKANA TK 2	MONTANA MT 2	VIRGINIA VR 2	SIBERIA SI 2	ETNA ET 2	NEBRASKA NB 2
TUNDRA TD 3	TOSKANA TK 3	MONTANA MT 3	VIRGINIA VR 3	SIBERIA SI 3	ETNA ET 3	NEBRASKA NB 3
TUNDRA TD 4	TOSKANA TK 4	MONTANA MT 4	VIRGINIA VR 4	SIBERIA SI 4	ETNA ET 4	NEBRASKA NB 4
TUNDRA TD 5	TOSKANA TK 5	MONTANA MT 5	VIRGINIA VR 5	SIBERIA SI 5*	ETNA ET 5	NEBRASKA NB 5
TUNDRA TD 6	TOSKANA TK 6	MONTANA MT 6	VIRGINIA VR 6	SIBERIA SI 6	ETNA ET 6	NEBRASKA NB 6

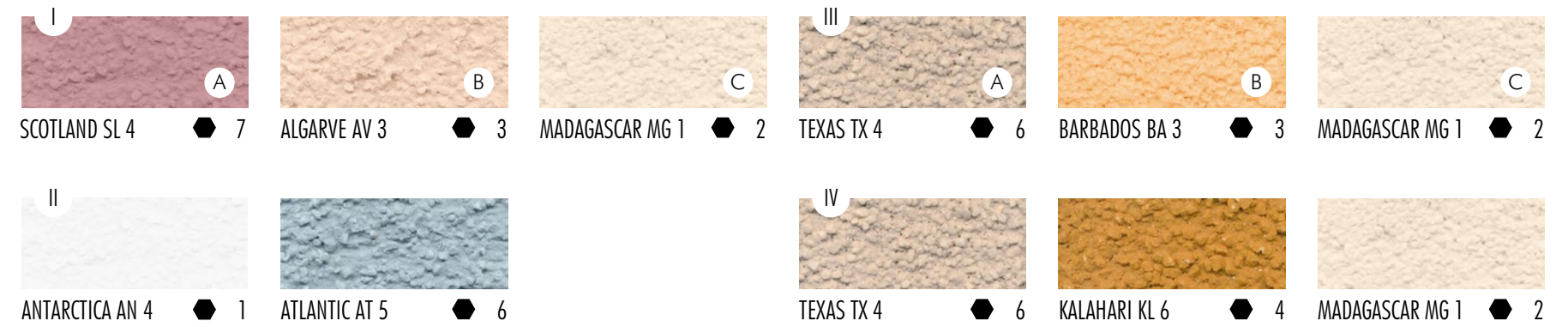


This elegant facade in Urban glamour style has undeniable metropolitan spirit. The main visualization has been prepared with classic beige and grey tones from Basic type combined with bright shade from Soft type. Madagascar 1 colour has been added to separate colours from the same type – this way combination contrast has been created and facade looks even smarter. First alternative proposal also presents combination contrast, this time built on pink and pale rose shades form Soft, Fresh and Natural types. While third and fourth colour sets are based on warm, cosy tones, proposal number II shows contrasted cold, blue shades (Off-white and Basic), which add more professionalism to this stylish facade.

COLOURS PROPOSAL



COLOURS ALTERNATIVE PROPOSAL





Multiplied squares and rectangles of this facade show the essence of Land of shapes style. The main colour proposal builds strong geometric existence based on combination contrast between three colours from the same style. Blue from Vital type plays crucial role in highlighting construction lines. While the first alternative proposition stands on high contrast on grey scale, the rest of proposals (II, III and IV) are built on combination contrasts. The stronger the contrast between colours within proposal, the more depth facade gained. This is great for exposing playful volumes – significant feature of Land of shapes architecture.

COLOURS PROPOSAL



COLOURS ALTERNATIVE PROPOSAL

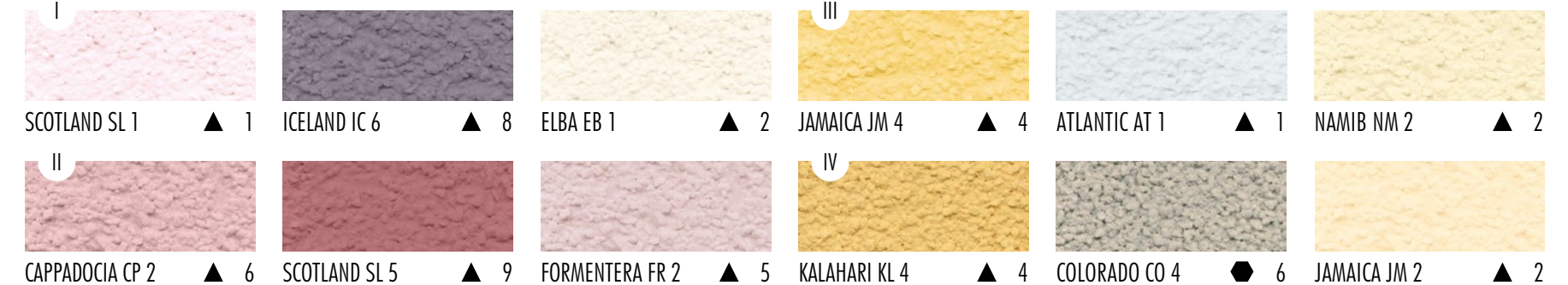


Lands of shapes is a style which is led by deeply outlined geometric forms, perfectly suited for modern constructions. The main example is focused on a grey level contrast between shades of grey from two types: Light basic and Dark. This combination builds formal and a bit mysterious look. High grey level contrast has been used also in proposal number 1 (Off-white, Soft and Dark types) while second and fourth compositions are based on combination contrast. Third proposal combines two light tones from Off-white and Soft types with highly saturated yellow from Vital type for more distinctive look.

COLOURS PROPOSAL



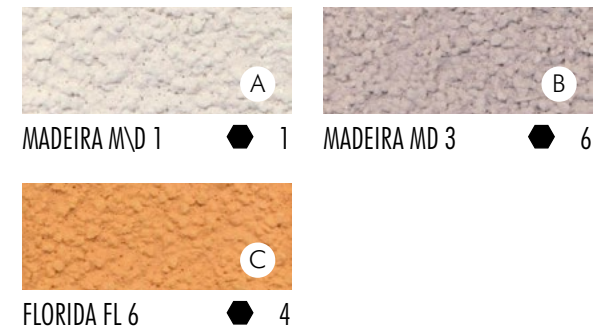
COLOURS ALTERNATIVE PROPOSAL





This Urban glamour facade is both modern and chic – its shape is fascinating and stands out from surroundings. The main visualisation is based on combination contrast between two light beige tones and orange shade from Vital type to even strengthen geometrical look of the building. Two alternative colouristic proposals (I and III) also show combination contrast – one with strong bronze accents, other distinctive pink elements. Proposals II and IV are based on gentle contrast on grey level scale and use similar types of colours (Off-white and Light basic or Basic). Due to delicate colours, they allow viewer to easily concentrate on attractive architectural shapes.

COLOURS PROPOSAL



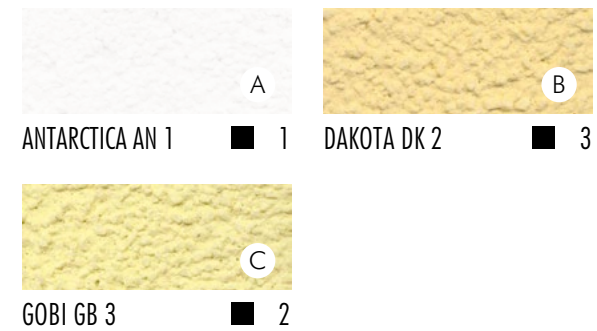
COLOURS ALTERNATIVE PROPOSAL



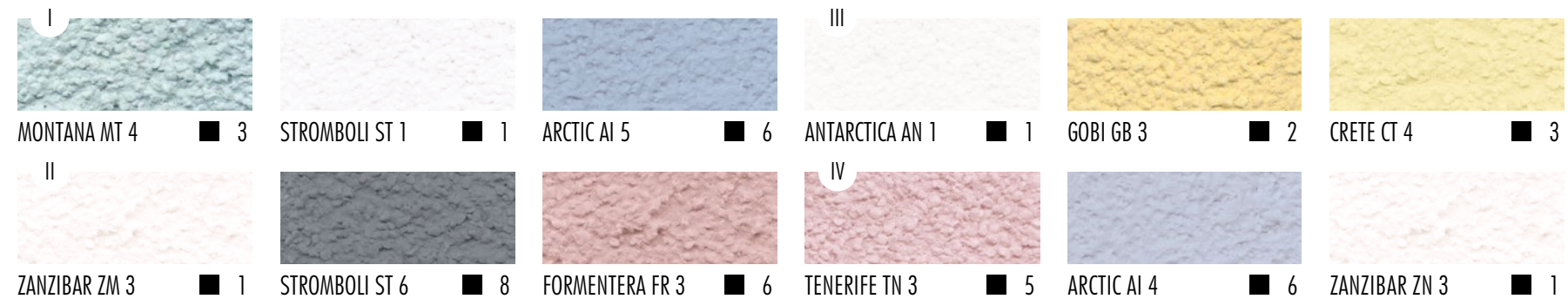


Formal and urban with simple, geometric shapes – these are the characteristic features of the proposal representing the City landscapes style. The main colouristic example is a harmonious colouristic composition based on the scale of saturation, where the brightest white colour turns into two shades of yellow. The first alternative proposition is built on combination contrast between blue tones, while two other alternative proposals (II and IV) are based on grey scale contrast with leading pink (II) or pastel shades (IV). Third set of colours is very similar to the main proposal. All colours are characteristic shades of City of landscapes style.

COLOURS PROPOSAL



COLOURS ALTERNATIVE PROPOSAL



This facade from Creative waves style with curvy roof is a real eye-catcher, especially when combining strong blue (Deep type) with very delicate colour (Off-white type) presented in main proposal. This creates the biggest contrast built on both chroma and grey level. Proposal I shows combination based on grey level contrast between Off white and Basic types, which allows to add more depth. Facade appears optimistic when Off white's colour and Fresh's yellow are combined together (proposal II). Alternative proposal III presents effect of increasing colour saturation: Light basic's grey is combined with Vital's pink to draw attention to the facade. The last proposal (number IV) harmoniously combines two bright colours with low grey level: green (Light basic) and yellow (Fresh).

COLOURS PROPOSAL



COLOURS ALTERNATIVE PROPOSAL





Design of this facade in Land of shapes style allows to play with many colours to expose its volume. Main visualisation shows two purple colours in Natural and Deep types, and two shades in Light basic type creating composition with combination contrast. This is an eye-catching look. The first alternative proposition is based on grey level contrast of three shades of grey from Light basic, Basic and Dark types. The second one shows the same set of types, but in this example the leading colour is blue. This colour evokes with peace and sense of calm. Proposal number 3. mixes three low-grey, pastel colours from Off-white, Soft and Light basic types with intensive orange from Vital type. In the last one blue from Deep type plays the main role again.

COLOURS PROPOSAL



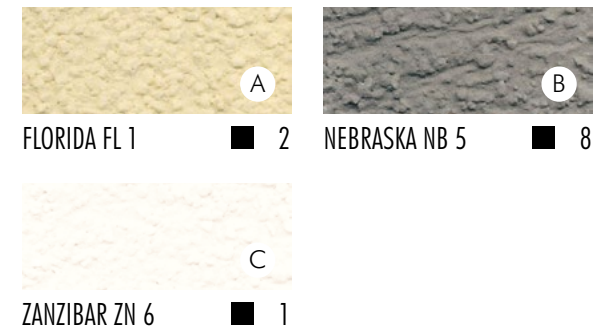
COLOURS ALTERNATIVE PROPOSAL



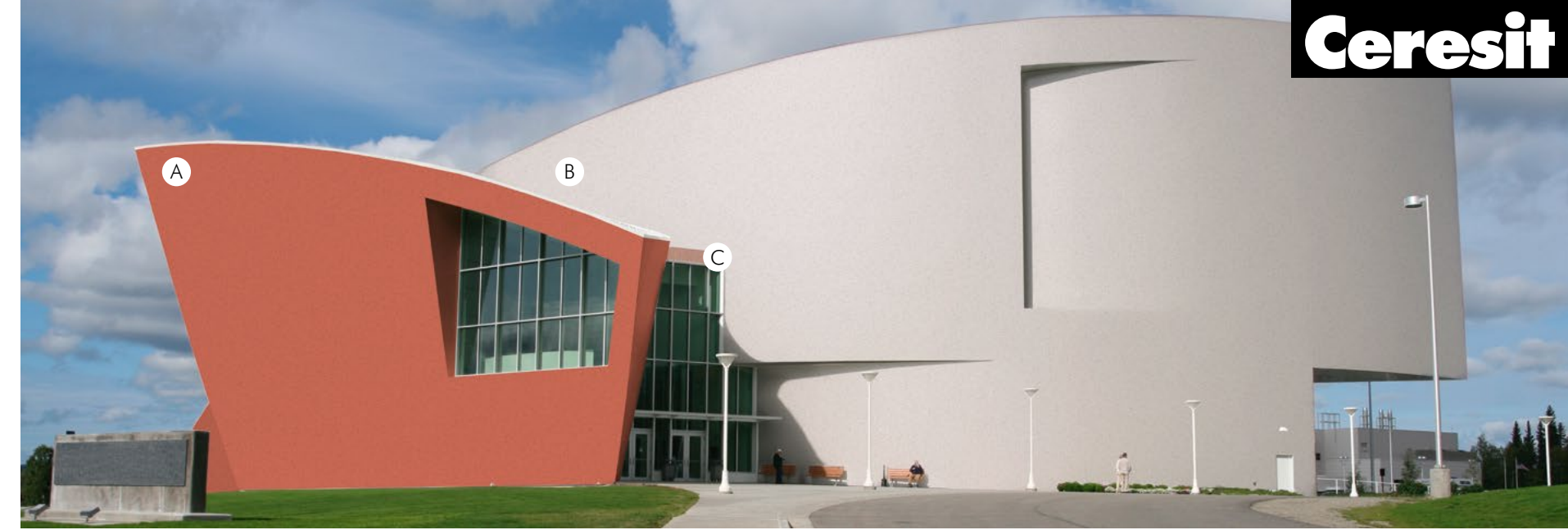


Urban character with contrasting shades are basic ingredients of City landscape style. The main colouristic proposal is based on strong grey level contrast between very light tones from Off-white and Soft types with grey from Dark type. Two alternative colouristic proposals (number I and III) include additional brick like plasters from VISAGE line, burgundy and brownish plasters, which allow to create more sophisticated look. Second proposal with grey level contrast refers to the main one, but it is based on set of blue-greys. Last proposal is focused on combination contrast between delicate Off white shade, Dark's grey and intense pink from Natural type to give an impression of joy and fun.

COLOURS PROPOSAL



COLOURS ALTERNATIVE PROPOSAL

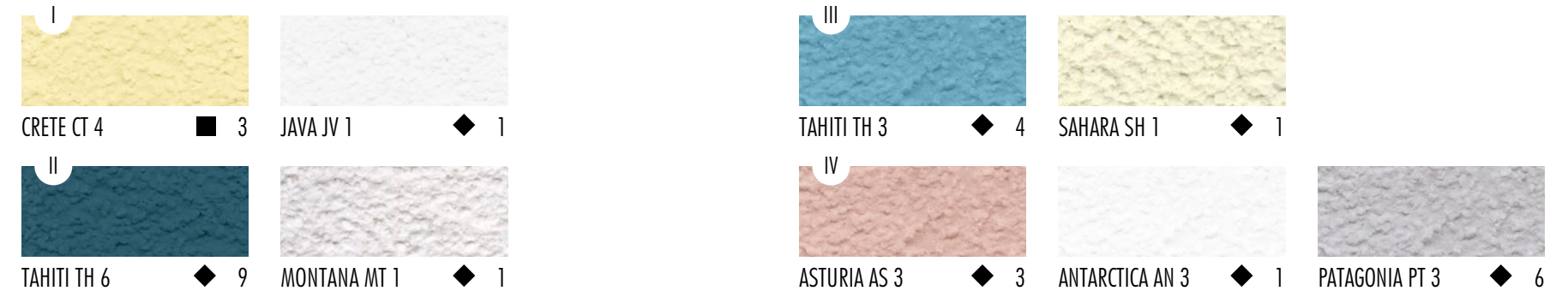


Due to simple and wavy form, this facade can be easily classified to Creative waves style. The main proposal combines three colour types that create increasing chromatic contrast – Off white, Fresh and Vital. This connection draws attention to modern facade. Very little influence of grey in all those types brings brightness and cheerfulness. The same harmonious and positive effect is shown on first alternative proposal (number I). Another colour combination (number II) is based on strong chroma and grey contrasts between Off white and Deep types, allowing to play with dimensions. Number III creates the biggest chromatic contrast: Off-white's whitish is very neutral and light, while Vital's turquoise is eye-catcher and highly stimulating. The last proposal (number IV) combines three types of colours: while Off white's tone and Fresh's pink give dreamy, nostalgic effect, Basic' grey adds some edge to this harmonious composition.

COLOURS PROPOSAL

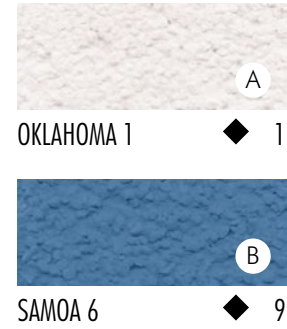


COLOURS ALTERNATIVE PROPOSAL

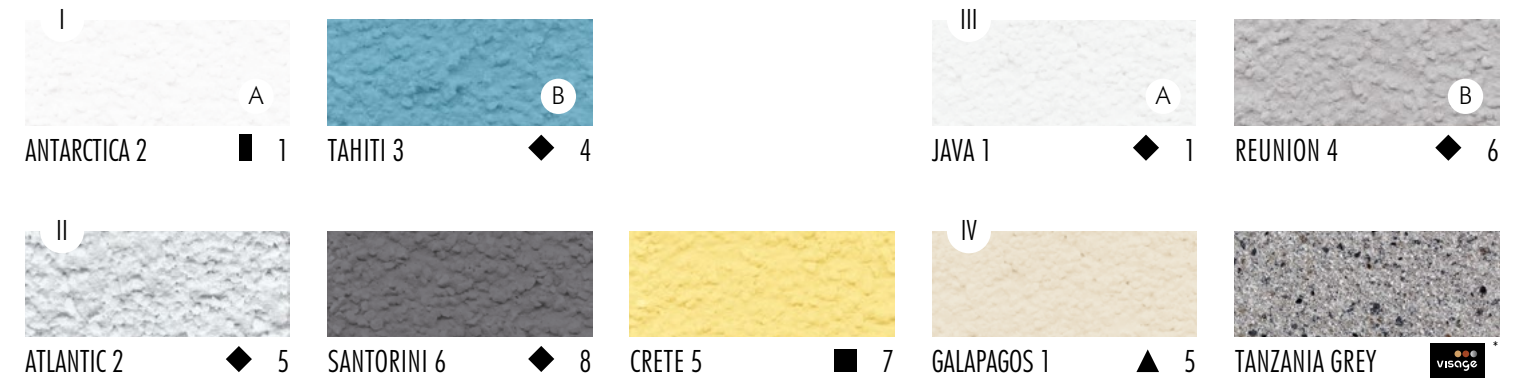


Modern facade of this Creative waves style house is softened with few curved lines and has many possibilities of finishing. The main colouristic proposal is focused on strong contrast based on both chroma and grey level. Leading colour from Off white type in combination with blue from Deep type adds more depth to the facade. This way playful volumes of Creative waves style can be exposed. Due to biggest chromatic contrast between Off white and Vital colours, alternative proposal (number I) creates highly stimulating final effect. Composition number II is an example of harmonious matching more than two colours from different styles. Contrast in grey level of two types of Creative waves colours (Light basic and Dark) has been easily reduced by adding City landscape yellow with medium level of grey (Natural type). In another combination (number III) grey level is contrasted to create more appealing result. The final proposal links bright beige from Colours of Nature palette with VISAGE natural stone granite on the socle to achieve discreet, but elegant look.

COLOURS PROPOSAL



COLOURS ALTERNATIVE PROPOSAL

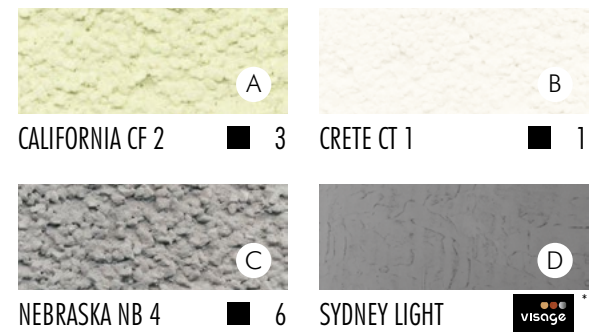


* More about VISAGE colour concept find on www.ceresit-visage.com



Classic character and simple geometric shapes of this building represent City landscape style. Three of five colouristic proposals (main and number I and II) are based on combination contrast between three types – the main one additionally shows the use of VISAGE decorative plaster with architectural concrete texture. The rest of examples (proposal III and IV) are based on grey level contrast with grayish and bluish shades from Dark type. Those intense colours play the main role and highlight horizontal lines of the facade.

COLOURS PROPOSAL



COLOURS ALTERNATIVE PROPOSAL

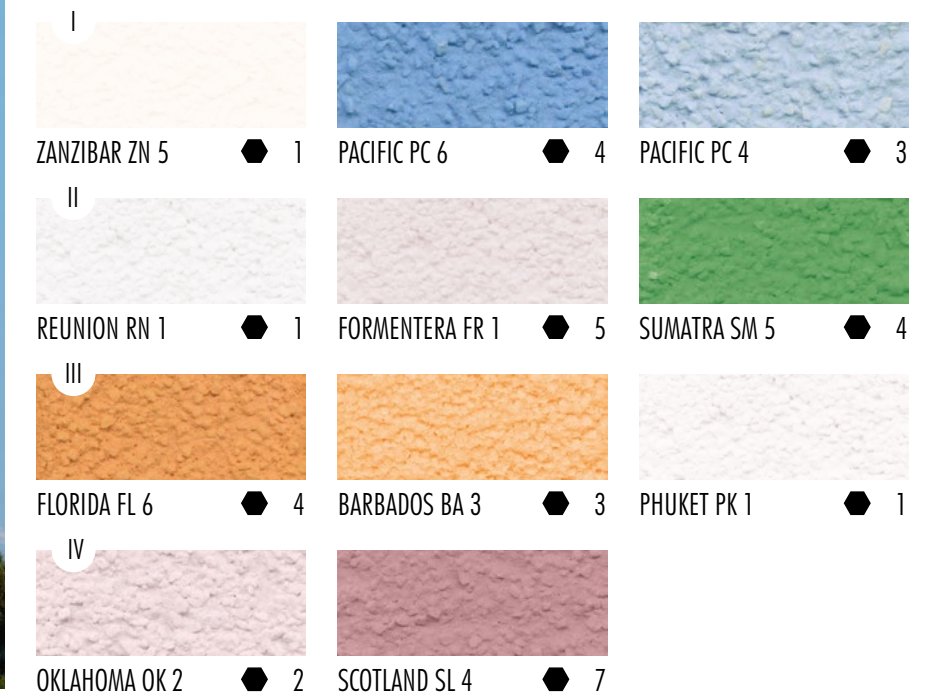


Sophisticated form and classical tones are characteristic elements of Urban glamour style. The main colouristic proposal is based on delicate grey level contrast between grey shades from Off-white and Light basic types. First alternative proposal is similar to third one by colour saturation contrast. Both includes three colours: blue tones (I) and shades of orange (III). Another alternative proposals are focused on combination contrast with two shades in Off-white and Light basic types and green in Vital type (II), and two pinkish tones in Soft and Natural types (IV).

COLOURS PROPOSAL



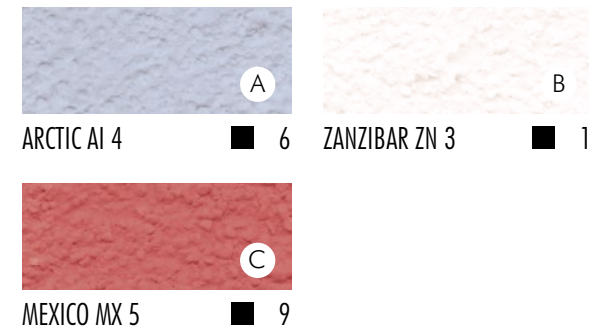
COLOURS ALTERNATIVE PROPOSAL



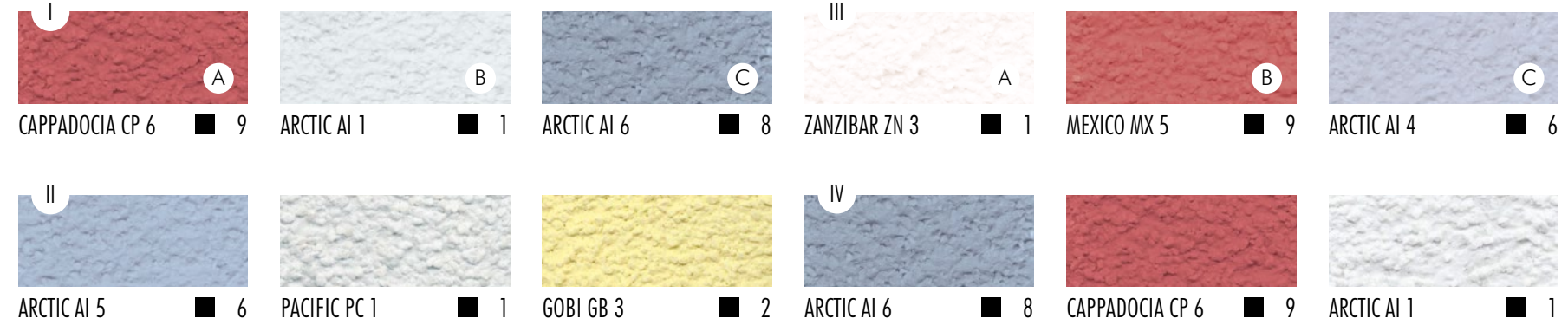


This building classified to City landscape style is a rare example of using the same colour sets, but in different proportion and on diverse area of application. This case shows specific combinations of the same colours and how many factors can affect the final effect. Main visualization, as well as proposal number III, is built on combination contrast between the same three colours from Off-white, Basic and Deep types. Alternative proposals: I and IV also use the same set of contrasted colours (from Off-white, Dark and Deep types), but in different positions. Proposal II stands out from others with its harmonious match of two light colours with blue from Basic type being the darkest and most intensive inside this set.

COLOURS PROPOSAL



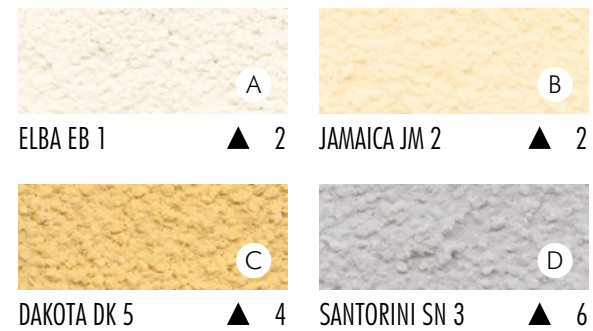
COLOURS ALTERNATIVE PROPOSAL





This sleek, eye-catching architecture refers to Land of shapes style. The main colouristic proposal matches three sunny and light shades from Soft and Vital types with darker Basic's grey to create combination contrast. Three alternative proposals (number I, III and IV) present grey level contrasts. Proposal number II builds the strongest possible combination contrast between pale pink from Off-white type and Deep's blackberry shade for really outstanding look.

COLOURS PROPOSAL



COLOURS ALTERNATIVE PROPOSAL



This simple cubic form with pulled out upper part of the facade can be easily classified to Land of shapes style. To highlight geometrical form main colouristic proposal is based on strongest combination contrast between main facade in white and decorative elements in Deep's red. Three alternative subsequent proposals show colour contrast based on grey level and they offer gray, blue and whitish tones mainly. Last composition is focused on combination contrast with energetic yellow from Vital type as the most flashy colour.

COLOURS PROPOSAL



COLOURS ALTERNATIVE PROPOSAL





Modern building with rounded finishing is a perfect example of Creative waves style. Both of two main colouristic proposals are based on grey level contrast. While the first one has additional VISAGE wood effect plaster, the second shows strong contrast between pure white colour and grey from Basic type. Alternative proposal III is built on combination contrast and proposal IV on grey level contrast. The last one presents similar colouristic composition as the second main proposal – based on grey level contrast of Off-white and Dark types, but enriched with VISAGE stone effect plaster.

COLOURS PROPOSAL



COLOURS ALTERNATIVE PROPOSAL



Simple form and contrasting colours are characteristic features of this Land of shapes style facade. By playing with colours and using strong combination contrast (Vital's yellow, Light basic's blue and Dark's grey) the main colouristic proposal highlights the geometry of the facade. First alternative proposition is focused on high grey level contrast of two, cool blue shades from Soft and Dark types and is similar to proposal number III. Both next examples (proposal II and IV) present colouristic compositions with delicate Off-white rosy, but they show different contrast (saturation contrast / grey level contrast). All suggested colours come from Land of shape style.

COLOURS PROPOSAL



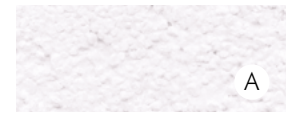
COLOURS ALTERNATIVE PROPOSAL



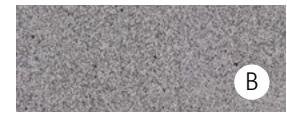
This modern and minimalistic version of Love of nature style facade has been finished with the use of peaceful grey (Light basic type) with some details made in darker shade (Basic type). Facade is more appealing when VISAGE plaster is added on the building socle. Alternative proposal number I combines three colours: Soft's rose from Romantic story, Deep's brown from Love of nature and VISAGE natural stone granite plaster, together creating unique look with comforting feeling. Alternative proposals II, III and IV are based on grey level contrast of whitish, bluish and greyish shades. Those colour connections create elegant, minimalistic look that perfectly match with contemporary architecture.



COLOURS PROPOSAL



PATAGONIA PT 1 ■ 5



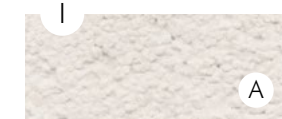
HIMALAYA GREY ■ VISAGE



PATAGONIA PT 4 ■ 6



COLOURS ALTERNATIVE PROPOSAL



UMBRIA UM 1 ● 2



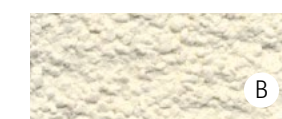
UMBRIA UM 4 ■ 9



JAMAICA BROWN ■ VISAGE



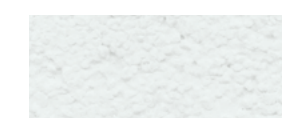
ICELAND IC 4 ■ 6



CEYLON CY 2 ■ 2



ARIZONA AR 6 ■ 6



VIRGINIA VR 1 ■ 1



ANTARCTICA AN 2 ■ 1



ALASKA AL 6 ■ 6



TAHITI TH 1 ■ 2

* More about VISAGE colour concept find on www.ceresit-visage.com



Geometric forms, bright colours and few delicate elements of construction all combined in Urban glamour style. The main colouristic proposal includes brown and beige shades from Fresh and Basic types in composition based on combination contrast. Three alternative proposals (I, III, IV) are built on similar, greyish and pinkish colours, but they create grey level contrast (Proposal I) or match harmoniously (II and IV). The third proposal is a rare example of use just one colour (orange) from Vital type. All colours come from Urban glamour style and within one proposal are matched tones from one colouristic line.

COLOURS PROPOSAL

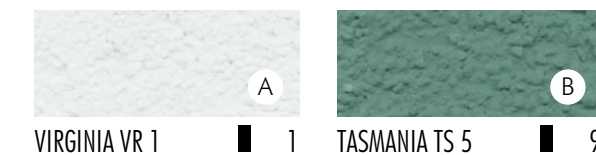


COLOURS ALTERNATIVE PROPOSAL



Wooden construction elements and reddish roof of this Love of nature cottage house are very distinctive. By building the biggest chroma and grey-level contrast in main proposal (Off white and Deep type colours), we add more volume and expose the facade even further. On the contrary, proposal I is created with Fresh yellow and light basic green – low chroma and grey level of those colours as well as their low contrast produced quiet and soft appearance. All next colour proposals (number II, III and IV) harmoniously match colours with similar chroma level, but they play with grey scale, adding more “weight” to the object.

COLOURS PROPOSAL



COLOURS ALTERNATIVE PROPOSAL

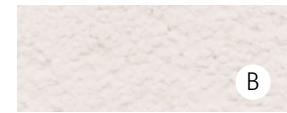


Delicate, classical lines with dreamy, pastel shades are significant features of Romantic story style, performed in the main colouristic proposal. It is based on fine contrast on a grey scale and builds harmonious composition of two shades: rosy white from Light basic type and cold blue from Soft type. Little chroma of those colours creates subtle and elegant look. The first variation (proposal I) is an optimistic match of two delicate pink colours from Soft type with a little bit more intensive orange from Fresh type. Proposal no. 2 is the most distinctive one – based on combination contrast between indigo from Deep type and delicate greyish from Light basic type it creates daring final effect. Both third and fourth propositions link two shades from Off-white type with slightly darker two tones from Light basic type.

COLOURS PROPOSAL



PACIFIC PC 3 ● 2



MAJORCA MJ 1 ● 5



COLOURS ALTERNATIVE PROPOSAL



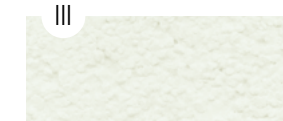
CATALONIA CN 1 ● 2



CALABRIA CR 3 ● 3



INDIANA IN 1 ● 2



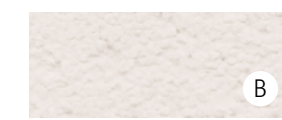
PAPUA PP 1 ● 1



SANTORINI SN 2 ● 5



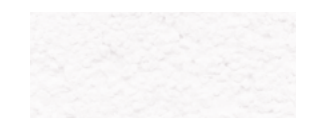
HAWAI HW 6 ● 9



MAJORCA MJ 1 ● 5



PATAGONIA PT 2 ● 5



LANZAROTE LN 1 ● 1



Design with pastel tones and gentle lines perfectly describes the Romantic story style. Both of two main colouristic proposals are based on small saturation contrasts. One has pastel green shade in Fresh type and with colour in Off-white type creates vertical lines on the facade, the other one has light colour in Soft type connected with energetic orange shade in Vital type, which highlights horizontal order. Two from three alternative proposals are based on combination contrast – fifth is built on gentle contrast between pink and orange shades, third one presents contrast with delicate blue from Basic type. Fourth proposal shows grey level contrast.

COLOURS PROPOSAL

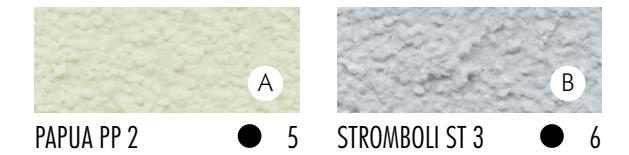


COLOURS ALTERNATIVE PROPOSAL



Historical palace finished with subtle and fragile hues – this is the heart of Romantic story style. The main colouristic proposal for this facade is built on harmonious match of two pastel colours: green in Light basic type and grey in Basic type. Those colours produce peaceful, elegant and sophisticated appearance. The first alternative variation is based on small saturation contrast of bright tones of whitish, pink and orange, all together giving light sensation. Proposals II, III and IV play with different level of grey to create more formal, but mysterious look.

COLOURS PROPOSAL



COLOURS ALTERNATIVE PROPOSAL



Ceresit

CR/ETICS/ACS/63/03.2017



Henkel CEE

Erdbergstraße 29,
A-1030 Vienna, Austria
Tel.: +43 171 10 44 336

www.ceresit.com
www.ceresit-visage.com
www.ceresit-impactum.com

Quality for Professionals