



OSiS + JUST ADD YOU.

Together. A passion for hair.[®]

+

S

—

S

O

OSIS + *Kelly* [♥]
JUST ADD YOU.

GLOW

FRIZZCONTROL & SHINE SERUM

BENEFITS:

- Silicone-free and provides a nourished hair feeling
 - Lightweight formula
 - Controls frizz and helps to protect against humidity
 - Easy combing
-

HOW TO USE:

Apply on damp or dry hair.



50ml
Hair hold:
no hold



OSiS + *Ellie*.
JUST ADD YOU.

UPLOAD

BODIFYING CREAM.

BENEFITS:

- Light & non-sticky hold
 - Creates volume
 - Provides fuller hair feel
 - Easy combing
 - Heat protection up to 450°F
-

HOW TO USE:

Apply on damp hair and blow-dry with round brush for volume and root-lift. Let air-dry for subtle definition.



200ml
Hair hold:
Light hold/+



PUMP UP

MULTI-USE
VOLUME
PASTE.

BENEFITS:

- Lasting volume and root lift
- Provides medium hold
- Provides thicker/fuller hair feel
- Provides light texture

HOW TO USE:

Use on dry hair of any length and style to add volume, root lift and texture.

TIPS:

Alternatively apply a small amount on damp, short hair and blow-dry, whilst shaping natural texture with fingers – this can create a windswept hair style.



VOLUME & BODY



85ml

Hair hold:

Medium hold/++

SOFT DUST

SOFT VOLUME POWDER.



BENEFITS:

- Non-gritty volume
 - Creates subtle texture
 - Pliable movement and provides grip
 - Light hold
-

HOW TO USE:

Shake gently before use. Hold upright. Apply on dry hair and work in with fingers for enhanced root-lift. Apply on mid-lengths and tousle hair through with fingers for pliable texture.

VOLUME & BODY

10g
Hair hold:
Light hold/+





GRIP

EXTRA STRONG MOUSSE.

BENEFITS:

- Strong hold and provides fuller hair feel
- Adds natural looking shine
- Reduces static and tames frizz
- Heat protection up to 450°F

HOW TO USE:

Shake well before use. Hold upright while dispensing. Apply on damp hair and blow-dry with a brush.

TIPS:

Alternatively set damp hair on rollers and use hood-dryer.



200ml
Hair hold:
Strong hold/++++

BENEFITS:

- Medium control
- Boosts hair at the roots and leaves hair voluminous looking
- Heat protection up to 450°F
- Non-flaky and adds textured finish
- Vegan formula*

*Free from animal-derived ingredients

HOW TO USE:

Use in short bursts from approx. 30cm/12in, while lifting large sections.

TIPS:

For a more natural look, use sparingly.

VOLUME UP

VOLUME BOOSTER SPRAY.



VOLUME & BODY



300ml
Hair hold:
Light hold/+



CURLS & WAVES

OSiS + Georgia.
JUST ADD YOU.



Schwarzkopf
PROFESSIONAL

Schwarzkopf
PROFESSIONAL

OSIS+
WAVE & CURL ENHANCING JELLY
TOPSY TWIRL
[ON DAMP HAIR]
[SUR CHEVEUX HUMIDES]

OSIS+
CURL JAM
CURL DEFINING GEL
[ON DAMP HAIR]
[SUR CHEVEUX HUMIDES]

OSIS+

OSIS+
BOUNTY BALM
RICH CURL CREAM
[ON DAMP HAIR]
[SUR CHEVEUX HUMIDES]
Net 150 mL • 5 fl oz U.S.

BOUNTY BALM

RICH CURL CREAM.

BENEFITS:

- Tames frizzy hair and enhances natural texture
- Provides a nourished hair feeling
- Improves detangling
- Helps to reduce hair breakage & protect against humidity

HOW TO USE:

Apply on damp, wavy or curly hair and define natural texture with fingers. Air-dry or use a diffuser.

TIPS:

Use small amount on straight, unruly hair before blow-drying with a brush, for a tamed look.



CURLS & WAVES

150ml
Hair hold:
No hold





TIPSY TWIRL

**WAVE & CURL
ENHANCING JELLY.**

BENEFITS:

- Delivers strong definition
- Adds lightweight volume
- Helps to protect against humidity
- Medium hold effect

HOW TO USE:

Work the product between your palms before application. Apply on damp hair and define natural curls and waves with fingers. Air-dry hair or use diffuser. Gently scrunch hair after drying to reveal soft, defined curls and waves.

300ml
Hair hold:
Medium hold/++



CURL DEFINING GEL.

CURL JAM

BENEFITS:

- Provides soft and moisturized feel
- Adds shine and curl definition
- Lightweight formula
- Helps to protect against humidity

HOW TO USE:

Apply on damp hair and define curls with fingers. Air-dry hair or use diffuser.

TIPS:

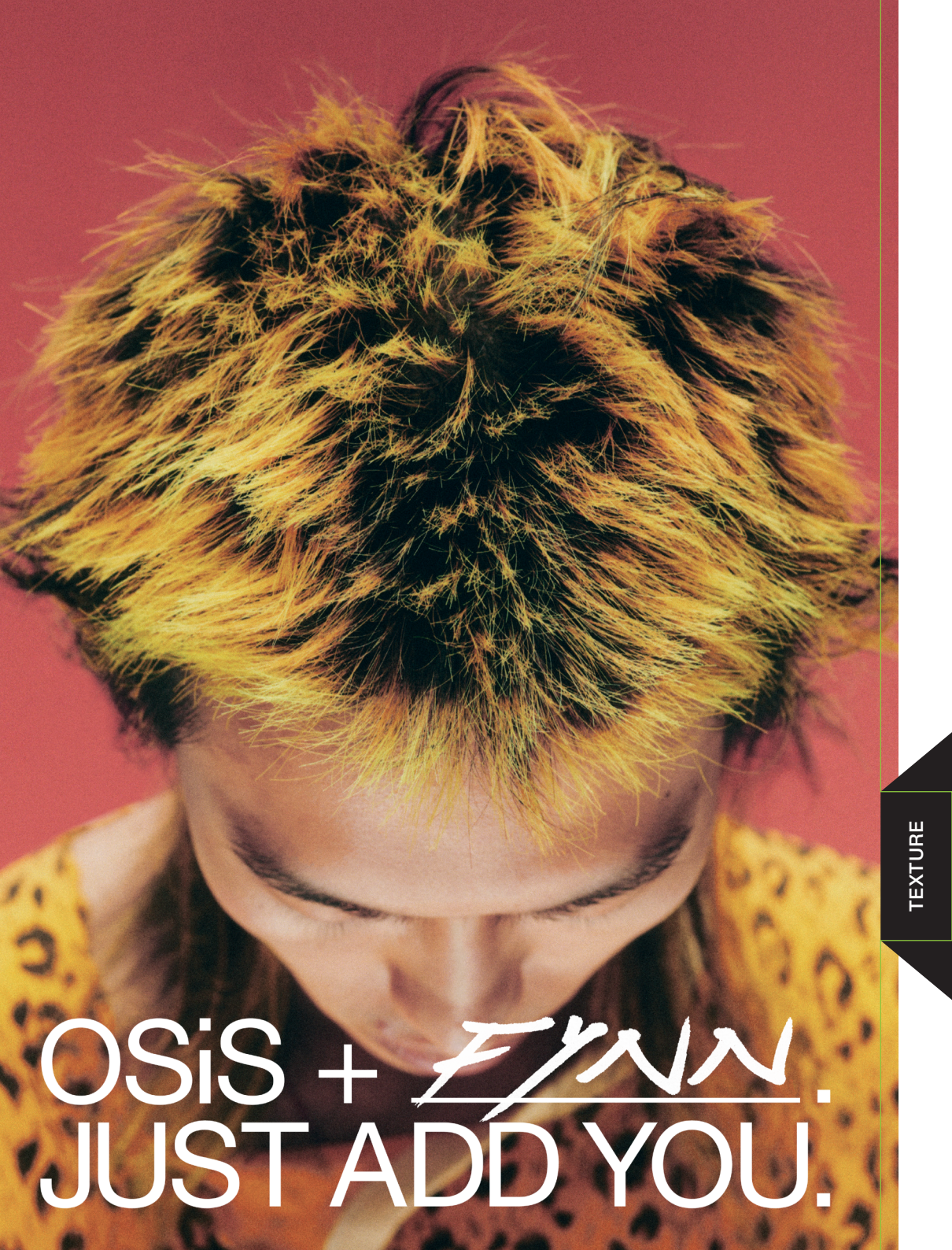
Gently scrunch hair after drying to reveal defined soft curls and coils.



300ml
Hair hold:
Light hold/+



CURLS & WAVES



OSiS + FYN.
JUST ADD YOU.

TEXTURE



CRAFT

DRY TEXTURE SPRAY.

BENEFITS:

- Dry texture
- Leaves hair voluminous looking
- Adds grip for styling hold
- Helps create volume
- Adds natural looking shine
- Vegan formula*

*Free from animal-derived ingredients

HOW TO USE:

Shake well. Use in short bursts on dry hair from approx. 20cm/8in while lifting large sections to create texturised volume. Tousele with fingers.



300ml
Hair hold:
Light hold/+

DUST IT

MATTIFYING
VOLUME
POWDER.



BENEFITS:

- Adds strong texture
- Adds volume & root lift
- Delivers strong grip
- Provides a matte finish

HOW TO USE:

Shake gently before use. Apply on dry hair. Work in with fingers.

TIPS:

Apply to roots for root-lift and to lengths for volume, and to add extra grip for braids, updos, and to keep pins in place.

TEXTURE

10g
Hair hold:
Strong hold/+++



MESS

UP

MATTE PASTE



BENEFITS:

- Remouldable
- Adds diffused texture and matte finish
- Provides hair grip and pliable movement
- Easy to apply and wash out

HOW TO USE:

Rub a small amount between your palms before applying on dry hair. Style.

100ml
Hair hold:
Medium hold/++



BENEFITS:

- Strong & remoldable hold
 - Delivers strong texture definition
 - Provides natural looking shine
 - Easy to apply and wash out
-

HOW TO USE:

Distribute between palms before applying on dry hair.



STRONG CREAM WAX.

FLEX WAX

85ml

Hair hold:

Strong hold/+++





THRILL

ELASTIC FIBRE GUM.

BENEFITS:

- Enhances shine and delivers medium hold
- Hair is bendable & remoldable
- Tames flyaways
- Easy to apply and wash out

HOW TO USE:

Apply a small amount on damp or dry hair. Style.

100ml
Hair hold:
Medium hold/++





OSiS + *Zhengwei Ai*.
JUST ADD YOU.

HOLD

LIGHT HOLD SPRAY.

ELASTIC



BENEFITS:

- Layerable and brushable
- Non-crispy and non-flaky light hold
- Reworkable and light control
- Heat protection up to 450°F
- Vegan formula*

*Free from animal-derived ingredients

HOW TO USE:

Use in short bursts on dry hair from approx. 30cm/12in.



300/500ml
Hair hold:
Light hold/+

HOLD

BENEFITS:

- Medium hold
- Easy to brush without flakes
- Heat protection up to 450°F
- Strong control
- Vegan formula*

*Free from animal-derived ingredients

HOW TO USE:

Use in short bursts on dry hair
from approx. 30cm/12in.

FREEZE

STRONG HOLD HAIRSPRAY.



300/500ml
Hair hold:
Medium hold/++



OSiS + JUST ADD YOU.

Together. A passion for hair.[®]