

BLO  
ND  
ME

  
Schwarzkopf  
PROFESSIONAL



# Precision Lightener



Use **BLONDME Precision Lightener** for precise on-scalp and regrowth services. The Swell-Control formula minimises swelling for utmost precision with up to 7 levels of lift.

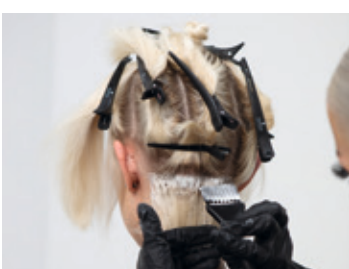
## Regrowth Application



**STEP 1:**  
Section the hair by separating front from back. Then separate the back section into 4 subsections: 3 vertical, 1 horizontal.



**STEP 3:**  
Leave to develop for up to 45 minutes, allow visual control. Rinse until water runs clear. Use COOL BLONDES Neutralising Shampoo and treat with COOL BLONDES Neutralising Mask.



**STEP 2:**  
Apply BLONDME Precision Lightener + BLONDME Premium Developer 2%/7 Vol. (1:1.5) onto the roots in fine sections.



**STEP 4:**  
Apply BLONDME Pastel Toning Ice + Clear (1:2) + BLONDME Premium Developer 2%/7 Vol. (1:1). Leave to develop for up to 20 minutes. Rinse until water runs clear. Treat with ALL BLONDES Rich Conditioner if required.

*Together. A passion for hair.*