

# TECHNICAL BOOKLET



BLO  
ND  
ME



FOR EVERY YOU.

# BLONDME COLOUR ASSORTMENT





	PREMIUM LIGHTENER 9+	CLAY LIGHTENER
	<ul style="list-style-type: none"><li>Improved formula with up to 9 levels of lift</li><li>Formulated with Swell-Control-Technology, ensuring precise and controlled lightening results</li><li>Suitable for all techniques and hair bases</li></ul>	<ul style="list-style-type: none"><li>Improved performance with up to 8 levels of lift</li><li>Spreads easily and provides optimal precision with a unique Soft-to-Solid formula – no need for foils</li><li>Ideal for freehand techniques &amp; balayage looks</li></ul>
HAIR BASE	All hair bases	3–8
DEVELOPER	2%   7 Vol.* 6%   20 Vol. 9%   30 Vol.	6%   20 Vol. 9%   30 Vol. 12%   40 Vol.
MIXING RATIO	1:1,5–1:2,5	1:1,5–1:2 (mix with a comb)
DEVELOPMENT TIME	20–45 min.	20–45 min.

	BLEACH & TONE	GLOW TONER	BLONDE LIFTING	LIFT & BLEND
	<ul style="list-style-type: none"><li>Lightener additive for lightening and toning in one step</li><li>Used in combination with all BLONDME Lighteners</li><li>Neutralises warm undertones during the lightening process, adding lasting tone directions</li></ul>	<ul style="list-style-type: none"><li>Truly acidic, demi-permanent toning range for intense shine and healthy glow from within</li><li>Gentle formula for all types of pre-lightened hair – no lift &amp; no damage</li><li>Fast yet premium colour results in only 10 minutes</li></ul>	<ul style="list-style-type: none"><li>Highlift range with up to 5 levels of lift</li><li>Specially designed to lift and tone and/or neutralise in one step</li><li>For natural hair bases with up to 30% white hair</li></ul>	<ul style="list-style-type: none"><li>Highlift range for mature blondes with up to 4 levels of lift</li><li>Optimal combination of lifting and up to 100% white blending</li><li>For natural hair bases with 30–70% white hair</li></ul>
	1–7	7–10** (pre-lightened hair)	6–9	6–9
	2%   7 Vol.* 6%   20 Vol. 9%   30 Vol. 12%   40 Vol.	Premium Developer 2%   7 Vol. (ideal for brush applications) Premium Gel Developer 2%   7 Vol. (ideal for bottle applications)	9%   30 Vol. 12%   40 Vol.	9%   30 Vol. 12%   40 Vol.
	Please see instructions for use for detailed mixing ratios	1:1	1:2	1:1
	20–45 min.	10 min. (allow visual control)	30–45 min.	30–45 min.

-  B – VIOLET ADDITIVE
-  B – ASH ADDITIVE
-  B – MATT ADDITIVE

-  PEARL GLAZE 10-01
-  ICE 10-1
-  FROSTY GOLD 10-51
-  SAND 9,5-41
-  APRICOT BLUSH 9,5-74
-  STRAWBERRY 9,5-81
-  LAVENDER 9,5-91
-  ICE-IRISÉ 9-19
-  STEEL 9-21
-  BISCUIT 9-49
-  SOFT GOLD 9-54
-  ICED CAPPUCCINO 8-14
-  HAZELNUT 8-46
-  GLOSSED CEDAR 7-01
-  CLEAR

-  L-ICE 12-1
-  L-ICE-IRISÉ 12-19
-  L-STEEL BLUE 12-21
-  L-ASH 12-22
-  L-SAND 12-4
-  LB-ICE 11-10
-  LB-ICE-IRISÉ 11-190
-  LB-ASH 11-20
-  LB-SAND 11-40
-  LB-BISCUIT 11-490



Integrated Anti-Metal Bond Protection Technology, powered by Schwarzkopf Bonding, protects the hair bonds during processing for minimised hair breakage. No bonding additives or anti-metal treatments needed!



## Finishing

For best results and optimal hair condition, finish every BLONDME Colour or Lightening Service with BLONDME Care.

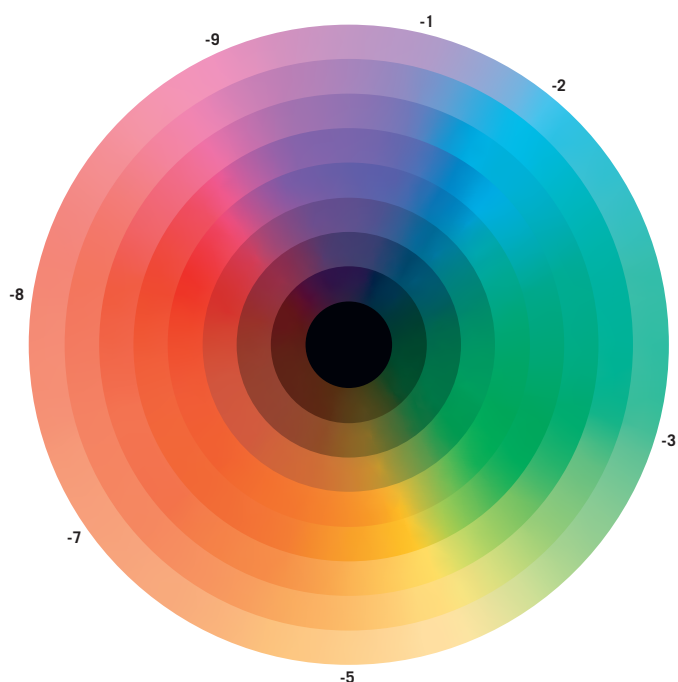
\* BLONDME Premium Gel Developer is not recommended to use with BLONDME Lighteners.  
\*\* Depending on the selected Glow Toner shade.

# THE COLOUR WHEEL AND UNDERLYING PIGMENTS



## SCHWARZKOPF PROFESSIONAL NUMBERING SYSTEM

COLOUR WHEEL



LEVEL OF DEPTH

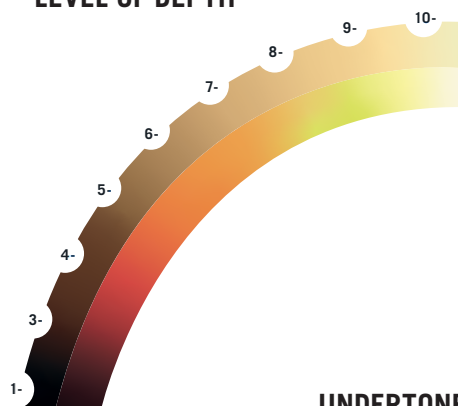


- 10- Ultra Blonde
- 9- Extra Light Blonde
- 8- Light Blonde
- 7- Medium Blonde
- 6- Dark Blonde
- 5- Light Brown
- 4- Medium Brown
- 3- Dark Brown
- 1- Black

STONE DIRECTION

- 0 Natural
- 1 Cendré
- 2 Ash
- 3 Matt
- 4 Beige
- 5 Gold
- 6 Chocolate
- 7 Copper
- 8 Red
- 9 Violet

LEVEL OF DEPTH



UNDERTONE

Scan for  
detailed  
instructions  
for use:



FOR EVERY YOU.