



Technical Data Sheet



Technical Data Sheet
Ref: NRPTX73000
Issued: 15.12.22
Number of pages: 5

Pattex Bond Seal Fill

High modulus, mould resistant and weathering resistant sealant & adhesive for indoor and outdoor applications based on Flextec®-Technology.



CHARACTERISTICS

- Mould Resistant
- good elasticity
- excellent adhesion without primer
- excellent adhesion on copper and brass
- high initial tack
- Interior and exterior use
- tack-free surface
- suitable for natural stones
- impact and vibration absorbing
-
- non-corrosive
- Very good UV-, weather and ageing resistance
- Isocyanate-free
- silicone-free
- Solvent-free
- Bonds to damp surfaces
- good gunnability even at low temperatures
- nearly no shrinkage during curing
- good compatibility with water based paints

APPLICATION FIELD

Bond Seal Fill bonds and seals well on a wide variety of substrates and is recommended for use in elastic sealing and bonding applications:

- Pattex No More Nails All Materials High Tack is multiple-substrate compatible including Brick, Ceramic, Concrete, Hardboard, Plasterboard, Plywood, MDF, Wood, Metal, UPVC, Glass, Plastics*, painted surfaces*, Mirrors**.
- movement joints in facades
- connection joints, e.g. joints between wood/aluminium/PVC-window or door frames and brickwork, for stairs, balconies, terraces, natural stones (e.g. marble, granite), soundproofing of pipes between concrete and sheathing and many more
- installing (bonding and sealing) of windowsills, skirting boards, covering boards, stair steps, tiles, fittings etc. bonding of baseboards, crash protection boards, stucco, metals, wood, stoneware, prefabricated elements and many more
- sealing and bonding applications where mould resistance is required



- sanitary joints, when the use of silicone sealants is not possible or not advisable (e.g. toilets/showers in automotive industry or paint shops)
- filling/sealing of cracks
- joints and seam seals in metallic and wooden construction
- joints in ventilation & air-conditioning ductwork

INSTRUCTIONS FOR USE

Pretreatment:

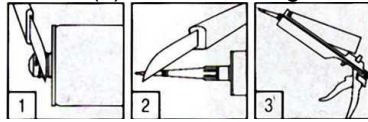
Bond Seal Fill is supplied ready to use and can be applied from the cartridge using a standard air or hand operated gun, with no special pre-treatment. If used for sealing, make sure to remove all old sealants before filling the joint.

Application:

Sealing application:

The joint width must be designed to suit the movement capability of the sealant. In general the joint width must be > 10 mm and < 35 mm. A width to depth ratio of $\sim 1:0.5$ must be maintained.

Cut off tip of the cartridge above the screw thread (1). Screw on plastic nozzle and cut off the tip of the nozzle (2). Place cartridge into gun (3).



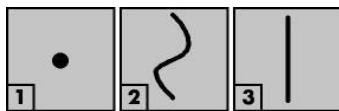
Insert cartridge into sealant gun and firmly extrude the Bond Seal Fill into joint, making sure that it is full contact with the side of the joint. Fill the joint, avoiding air entrapment. Bond Seal Fill must be tooled firmly against joint sides to ensure good adhesion.

Masking tape must be used where sharp exact joint lines or exceptionally neat lines are required. Remove the tape whilst the sealant has still not formed a skin.

After application, the product can be smoothed with soapy water before skinning for a perfect sealant surface.

Bonding application:

Apply adhesive onto the surface of one of the elements to be bonded: In spots (1) in order to smooth uneven surfaces, in wave-like form (2) for higher initial tack with large surfaces or in straight beads for smaller surfaces (3). Release gun after appliance to stop adhesive flow. (not valid for Foldable Gun (DW111/120)).



Firmly fix items to be bonded into position with a twisting action. If necessary (e.g. heavy items and items under tension), support the items until cured. Items can be adjusted after application. Minimum thickness of the adhesive layer should be 1 mm to ensure ventilation.



In case of outdoor use, apply **vertical** strands. Use hand pressure to set the element to be bonded into position. If necessary, use adhesive tape, wedges, or props to hold the assembled elements together for the initial hours of curing.

An incorrectly positioned element can be easily unfastened and repositioned in the first few minutes after application. Apply pressure again.

Optimum bonding will be obtained after complete curing of Bond Seal Fill, i.e. after 24 to 48 hours at +23°C for a thickness between 2 to 3 mm.

Cleaning:

Clean tools and application equipment with white spirit immediately after use. Cured material can only be removed mechanically (e.g. with knife).



TECHNICAL DATA

Uncured product

Base:	Flextec®-Polymer (moisture curing silane modified polymer (SMP))
Odour:	Alcohol
Application temperature:	+5°C to +40°C (substrate and ambient)
Consistency:	Non-slump paste
Density:	~ 1.4 g/ml (ISO 2811-1)
Resistance to flow:	~ 0 mm (ISO 7390)
Skin formation time:	~ 25 minutes (23°C, 50% r.h.)
Curing speed:	~ 2 mm / 24 hours (23°C, 50% r.h., bead 20x10mm)
Initial tack:	~ 8-10 g/cm ²

Cured product

Odour:	Odorless
Shore A hardness:	~ 30 (ISO 868)
100% Modulus :	~ 0,60 N/mm ² (ISO 8339-A)
Tensile strength:	~ 0,9 N/mm ² (ISO 8339-A)
Elongation at break:	~ 300 % (ISO 8339-A)
Elongation at break:	~ 400 % (ISO 8339-B)
Elastic recovery:	~ 80 % (ISO 7389-B)
Shrinkage:	~ -3 % (ISO 10563)
Movement capability	25 % (ISO 11600-F)
Recommended joint width	10-35 mm
Service temperature:	-40°C to 80°C



LIMITATIONS

Elastic sealants may only be painted over if the coating is able to follow the movements of the sealant (in general if joint movements are <5%, depending on the coating) – otherwise cracks in the surface of the coating can occur.

In case of high movement joints coatings may cover the joint sides to max. 1 mm.

Due to the large number of coatings it is recommended to test the compatibility of a coating product before use, especially in case of alkyd resin paints. When painted over Bond Seal Fill, alkyd resin paints may dry slowly and show surface tackiness and/or discoloration.

In case of powder coated substrates (e.g. powder coated aluminum window frames) an adhesion test is recommended before use.

Do not use Bond Seal Fill as a glazing sealant.

Do not use on bituminous substrates or on building materials which might bleed oils, plasticizers or solvents which could attack the sealant.

Not suitable for joints with water pressure or permanent water immersion, e.g. in swimming pools. Do not use Bond Seal Fill to seal bathtubs or washbasins.

Color deviations may occur e.g. due to exposure to chemicals or high temperatures. However a change in color does usually not affect adversely the technical performance or the durability.

Product may only be used for mirror bonding if the mirror coating and the protective lacquer complies with EN 1036-1. In case of unknown mirror qualities please ask mirror producer for an approval.

Storage:

12 months from date of production if stored in unopened original cartridges, in dry conditions and protected from direct sunlight at temperatures between +10°C and 25°C

HEALTH AND SAFETY

Before using the product please see related Material Safety Data Sheet that is available on request.

The information provided in this Technical Data Sheet (TDS) including the recommendations for use and application of the product are based on our knowledge and experience of the product as at the date of this TDS. The product can have a variety of different applications as well as differing application and working conditions in your environment that are beyond our control. Henkel is, therefore, not liable for the suitability of our product for the production processes and conditions in respect of which you use them, as well as the intended applications and results. We strongly recommend that you carry out your own prior trials to confirm such suitability of our product.

Any liability in respect of the information in the Technical Data Sheet or any other written or oral recommendation(s) regarding the concerned product is excluded, except if otherwise explicitly agreed and except in relation to death or personal injury caused by our negligence and any liability under any applicable mandatory product liability law.

Henkel Norden AB

Box 151 22

Gustavslundsvägen 151A

SE-167 15 Bromma, Sweden