

NEW

# SCALP CLINIX

FORMULATED WITH MICROBIOME ACTIVE TO HELP RE-BALANCE YOUR CLIENT'S SCALP



## IN-SALON & AT HOME

## IN-SALON

Instantly improve your client's scalp condition



### PRE-SHAMPOO SCRUB

- + For all scalp types\*
- + Gently exfoliates dead skin cells
- + Prepares the scalp for cleansing
- + Leaves the scalp feeling refreshed with a cooling effect

\*Do not use on irritated scalp



### BIOTIC BASE

- + Helps to balance the scalp's microbiome, for improved scalp condition
- + Provides a soothing & moisturised feeling to scalp



### SOOTHING BOOSTER

- + For dry & delicate scalp
- + Provides a soothing & balanced feeling



### OIL CONTROL BOOSTER

- + For oily scalp
- + Deeply refreshes



### FLAKE CONTROL BOOSTER

- + For all dandruff types
- + Calms & removes flakes

## AT HOME

Prolong & maintain salon results at home



### SCALP CLINIX SOOTHING

- + For dry & delicate scalp
- + More than 93% of consumers say that their scalp feels soothed and less tight after 4 weeks of regular usage\*
- + Provides a soothing feeling to scalp



### SCALP CLINIX OIL CONTROL

- + For oily scalp
- + 98% of consumers say that their scalp feels less oily after the 1<sup>st</sup> application\*\*
- + Leaves the scalp refreshed with a cooling effect



### SCALP CLINIX FLAKE CONTROL

- + For all dandruff types
- + 92% of consumers say that it visibly reduces flakes after the 1<sup>st</sup> application\*\*\*
- + Provides a soothing & calming feeling to itchy scalp with a cooling effect



### SCALP CLINIX ANTI-HAIR LOSS

- + For thinning hair
- + In combination with massage it promotes the scalp's blood micro-circulation & strengthens the hair follicle
- + Reduces non-pathological hair loss after just 6 weeks\*\*\*\*

\*Based on a home use test carried out by SGCI Co., Ltd in China with 32 participants from December 2020 to January 2021 on the Scalp Clinix Soothing Shampoo or Soothing Treatment.  
 \*\*Based on a home use test carried out by How-To NPD Consulting LTD in China with 62 participants in April 2021 when Scalp Clinix Oil Control Shampoo and Oil Control Treatment are used together.

\*\*\*Based on a home use test carried out by How-To NPD Consulting LTD in China with 63 participants in April 2021 when Scalp Clinix Flake Control Shampoo and Flake Control Treatment are used together.  
 \*\*\*\*When Scalp Clinix Anti-Hair Loss Shampoo and Anti-Hair Loss Serum are used together regularly.



NEW

# SCALP CLINIX

## BACKWASH MANUAL



DISCOVER MORE SCAN HERE

*Together. A passion for hair.*

NEW

# SCALP CLINIX

SCHWARZKOPF PROFESSIONAL'S MOST ADVANCED & CUSTOMISABLE SKIN CARE FOR SCALP & HAIR IN A HOLISTIC TREATMENT, FROM SALON TO HOME

## IN-SALON

BIOTIC SERVICE TIME: APPROX. 15 MINUTES

### 1 PREP



1 Prepare the scalp for cleansing with **SCALP CLINIX PRE-SHAMPOO SCRUB**.

### 2 CLEANSE



2 Cleanse the scalp & hair with **FIBRE CLINIX TRIBOND SHAMPOO** and repeat if necessary.

### 3 TREAT



3 Select the booster targeting the client's scalp need. Mix 25g of **SCALP CLINIX BIOTIC BASE** with 5g of selected **SCALP CLINIX BOOSTER**. Leave in for up to 10 minutes.

&

### 4 TRANSFORM\*



TRIBOND SERVICE TIME: ADDITIONAL 2-3 MINUTES

## AT HOME

### MAINTAIN

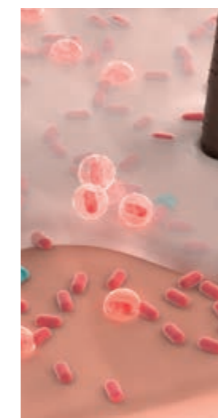


Recommend the **SCALP CLINIX** home care regime according to the client's prescription to maintain the in-salon service and get long-lasting results.

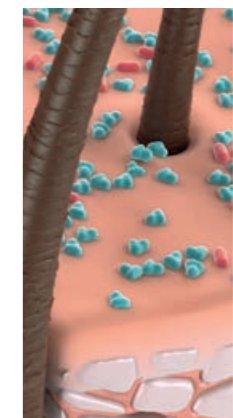
## BIOTIC TECHNOLOGY



**STAGE 1**  
The scalp's microbiome is unbalanced when the bad microbes predominate the good microbes.



**STAGE 2**  
Biotic Technology with microbiome active helps to re-balance the scalp's microbiome for improved scalp condition.



**STAGE 3**  
Once the ratio of good and bad microbes is adjusted to its natural state, the scalp's microbiome is balanced leading to improved scalp condition.

## EXPERT TIP BECOME A SCALP & HAIR EXPERT

Answer your client's scalp & hair needs with minimum time effort by using Scalp Clinix & Fibre Clinix at once. After cleansing, treat your client's scalp with **Scalp Clinix Biotic Base & dedicated Booster**. Followed by the application of **Fibre Clinix Tribond Treatment & selected Boosters** on mid-lengths and ends for transformative results. Rinse off both services after combined development time.

\*dedicated to clients who have compromised mid-lengths and ends and/or look for transformative results