

STRAIT
STYLING
glatt


Schwarzkopf
PROFESSIONAL



Straight to beauty

Together. A passion for hair.

STRAIGHT TO PERFECTION

SCHWARZKOPF PROFESSIONAL'S STRONGEST STRAIGHTENING PERFORMANCE UP TO NOW



- ✓ An Active Care+ Complex for perfectly cared and shiny hair
- ✓ Fragrance for a pleasant cosmetic experience during processing time
- ✓ Lasting up to 3 months



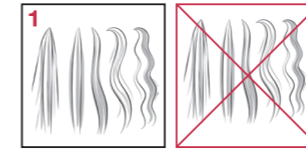
GLATT from Strait Styling is dedicated to the needs of all hair types. It is available in 2 different strengths depending on the hair structure.



Naturally very curly or frizzy hair



Naturally curly, coloured or very curly coloured hair



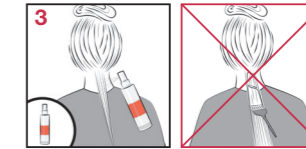
1 ANALYSIS OF THE HAIR

2 different strengths suitable for different hair types: Do not use on hair that has been bleached or straightened with a relaxer containing LYE, Guanidine Carbonate or on metallic-dyed colour-treated hair or henna-treated hair.



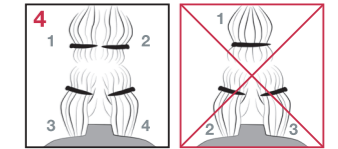
2 HAIR CLEANSING

Gently work BC Deep Cleansing Shampoo into wet hair. Rinse thoroughly.



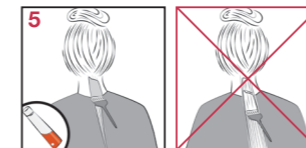
3 POROSITY BALANCING

Apply Natural Styling Pre-Treatment and spray on porous areas. Blot dry with a towel or tissue.



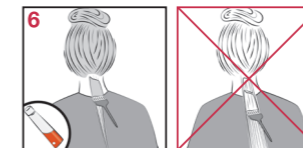
4 SECTIONING

Divide the head into 4 equal sections.



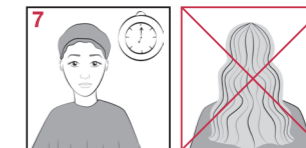
5 APPLICATION

Apply Glatt Straightening Cream starting at the neck taking 1 cm thick and 5 cm wide sections. Leave roots out for at least 1cm from the scalp.



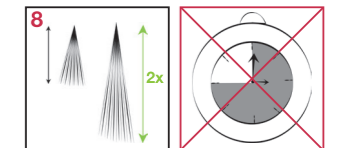
6 STRAIGHTENING BOARDS

Use straightening boards for problematic areas or when required.



7 DEVELOPMENT TIME

Application: 10 - 20 min. Processing: 10 - 20 min. Total straightening development: 20 - 40 min. Cover the hair with a plastic cap straight down to the back.



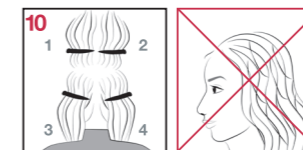
8 STRETCH TEST

Check the result using the rubber band test. If you can stretch the hair approximately twice as much as normal, the process is finished. Even if the development is not completed after maximum time rinse out processed parts.



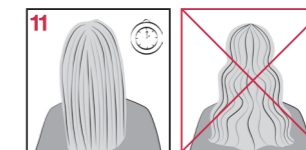
9 RINSE OUT

Rinse out thoroughly for at least 5 - 8 min until the straightening cream is removed completely.



10 NEUTRALISING BALM

Divide the head into 4 sections again. Start applying Glatt Neutralising Balm at the neck, each horizontal section 1 cm thick and 5 cm wide. Comb straight whilst applying. Do not tangle the hair. Pin back the hair if necessary.



11 DEVELOPMENT NEUTRALISER

Processing time: 10 min.



12 RINSE OUT

Rinse out thoroughly with lukewarm water. Apply BC Repair Rescue Treatment it on for 5 - 10 min.



13 FINISH

Do not pull, tangle or knead the hair. Use OSiS Flatliner before blow drying to create the desired styling in combination with a flat iron.





www.schwarzkopfpro.com



@schwarzkopfpro