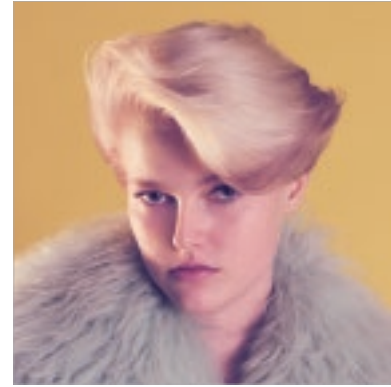
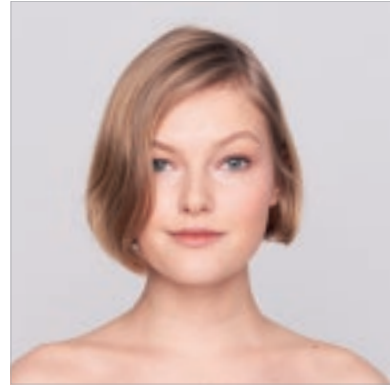


ONCE UPON A TIME Catwalk

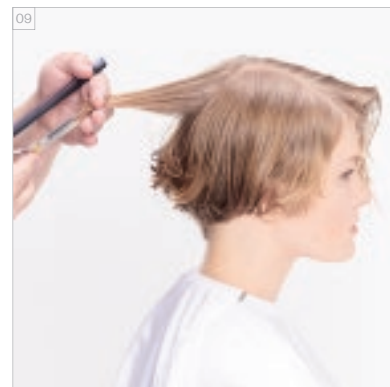
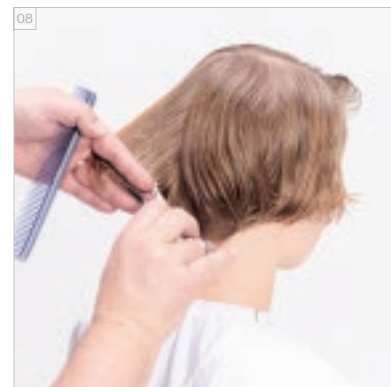
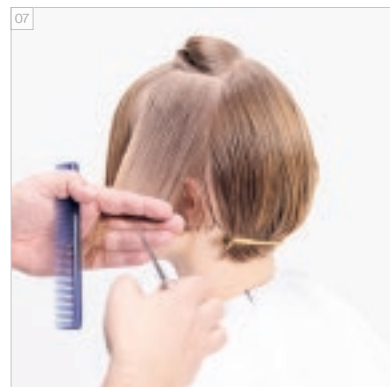
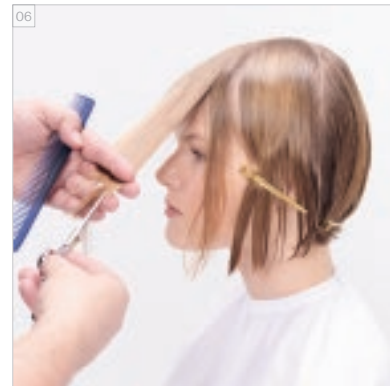
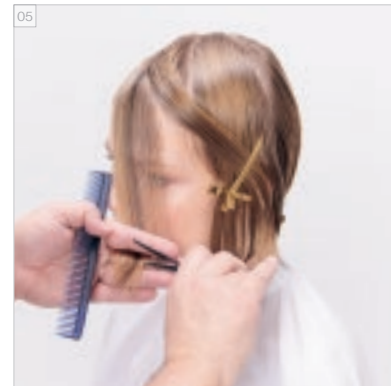
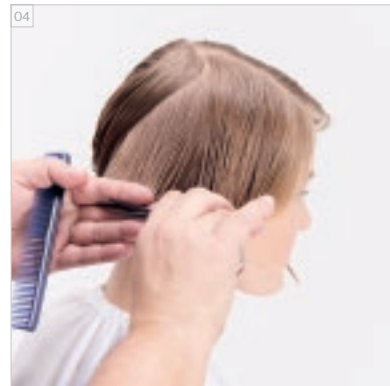
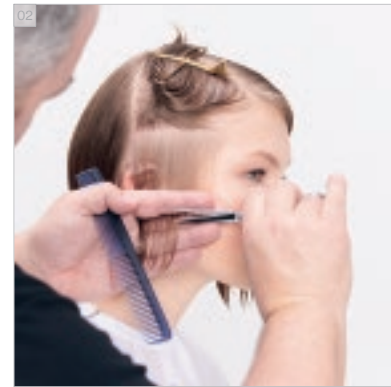
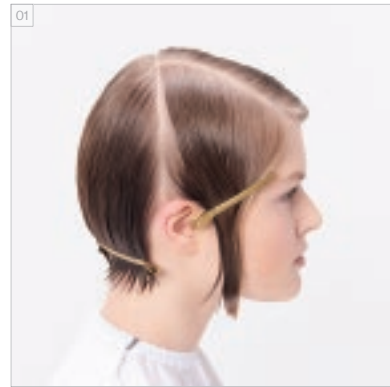
BEFORE // AFTER
VORHER // NACHHER



For more information and to get inspired watch our Essential Looks Trendreport: www.essentiallooks.com/2020-2

Weitere Informationen und Inspiration erhältst du in unserem Essential Looks-Trendreport: www.essentiallooks.com/2020-2

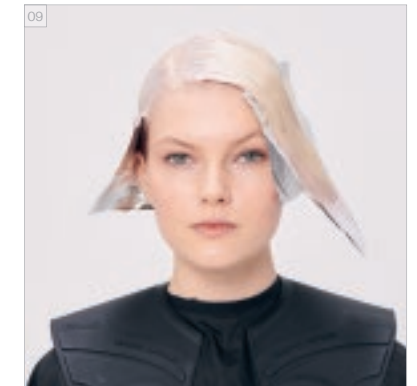
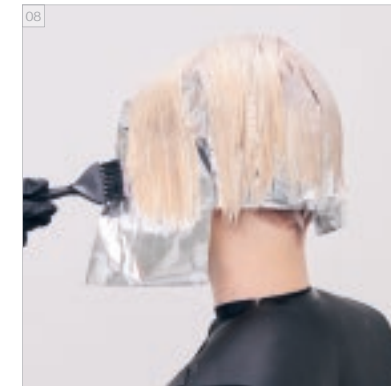
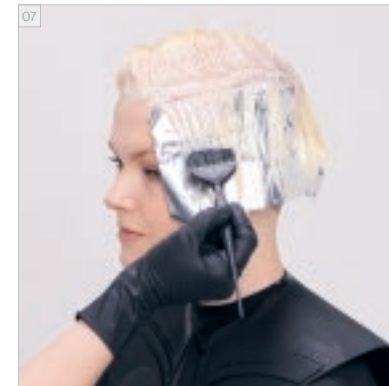
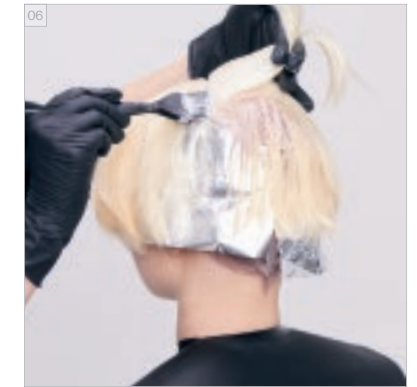
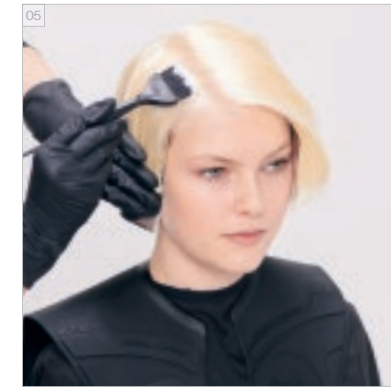
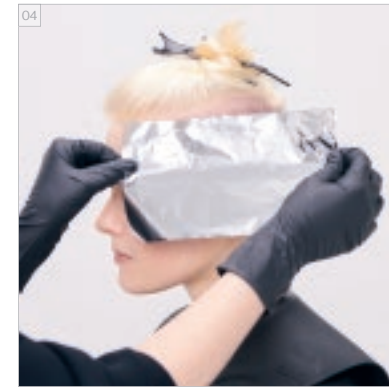
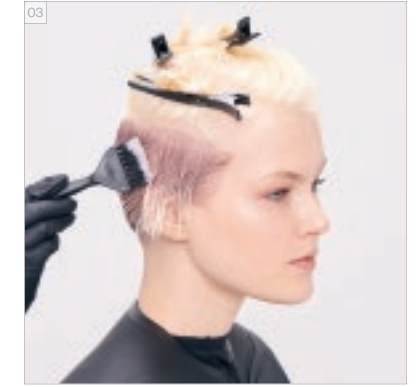
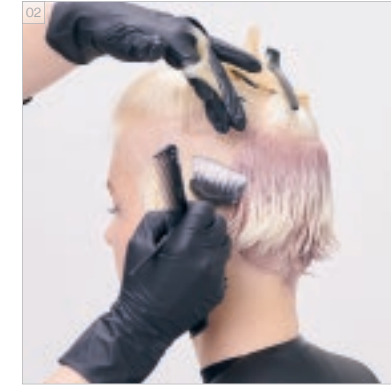
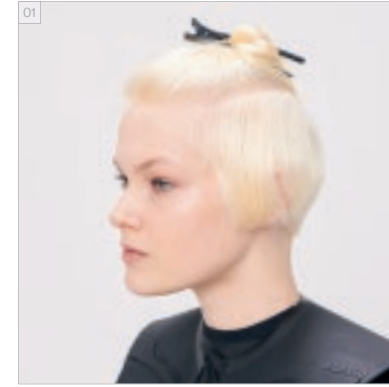
CUT STEP BY STEPS
STEP BY STEP - SCHNITT



#EssentialLooks

COLOUR TECHNIQUE
#dualblending
by @rossajurenas

COLOUR STEP BY STEPS
STEP BY STEP - FARBE



COLOURS USED

PRE-LIGHTENED BLONDME BOND ENFORCING PREMIUM LIGHTENER 9+
+ BLONDME PREMIUM DEVELOPER 2%/7VOL. (1:2)

COLOUR 1 - SIDES & NAPE: BLONDME BOND ENFORCING BLONDE TONING BROWN MAHOGANY + BLONDME PREMIUM DEVELOPER 2%/7 VOL. (1:1)

COLOUR 2 - TOP SECTION: BLONDME BOND ENFORCING BLONDE TONING SAND + ICE (1:1) + BLONDME PREMIUM DEVELOPER 2%/7 VOL. (1:1)

COLOUR 3 - SIDE-FRINGE TIPS: BLONDME BOND ENFORCING BLONDE TONING BROWN MAHOGANY + BLONDME PREMIUM DEVELOPER 2%/7 VOL. (1:1)

BLONDME KERATIN RESTORE BONDING SHAMPOO

BLONDME KERATIN RESTORE INTENSE CARE BONDING LOTION

VERWENDETE FARBEN

VORAUFGELICHT MIT BLONDME BOND ENFORCING PREMIUM LIGHTENER 9+
+ BLONDME PREMIUM DEVELOPER 2% (1:2)

FARBE 1 - SEITLICHE KONTUREN & NACKEN: BLONDME BOND ENFORCING BLONDE TONING
MAHAGONIBRAUN + BLONDME PREMIUM DEVELOPER 2% (1:1)

FARBE 2 - SEKTION AM OBERKOPF: BLONDME BOND ENFORCING BLONDE TONING
SAND + EIS (1:1) + BLONDME PREMIUM DEVELOPER 2% (1:1)

FARBE 3 - SPITZEN DES STIRNMOTIVS: BLONDME BOND ENFORCING BLONDE TONING
MAHAGONIBRAUN + BLONDME PREMIUM DEVELOPER 2% (1:1)

BLONDME KERATIN RESTORE BONDING SHAMPOO

BLONDME KERATIN RESTORE INTENSE CARE BONDING LOTION

