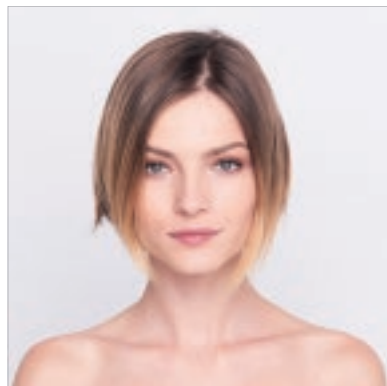


EVERYDAY DECADENCE Salon

#EssentialLooks

COLOUR TECHNIQUE
#multiblending
by @lesleyjennison

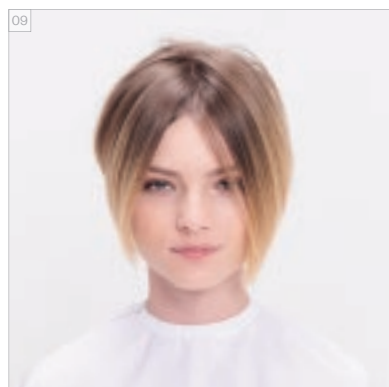
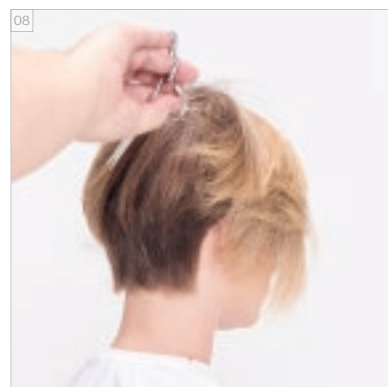
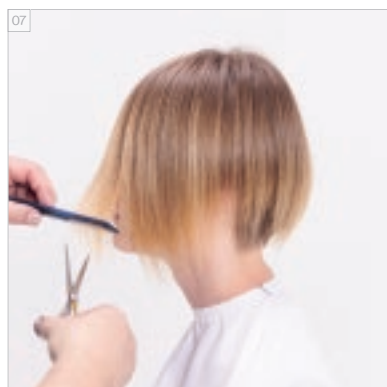
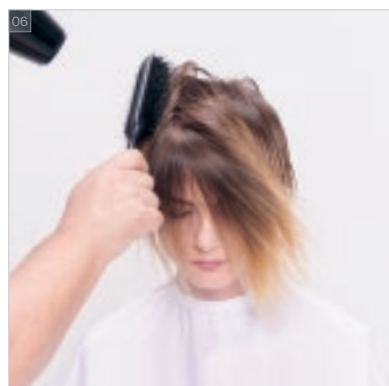
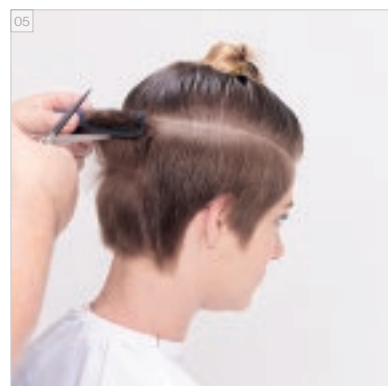
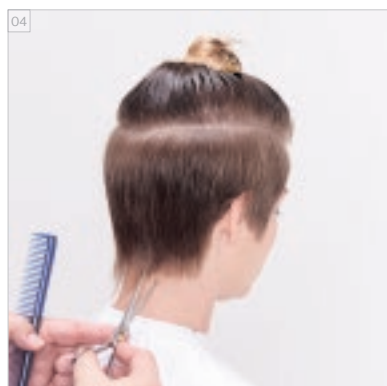
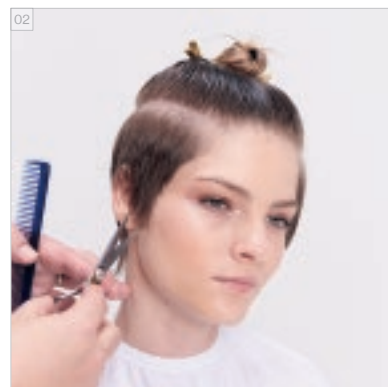
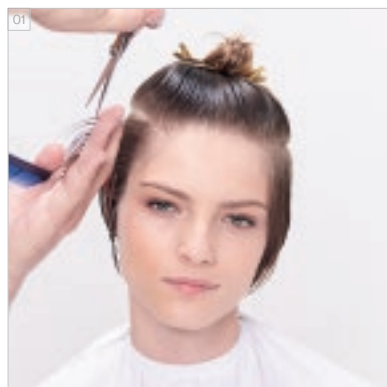
BEFORE // AFTER
VORHER // NACHHER



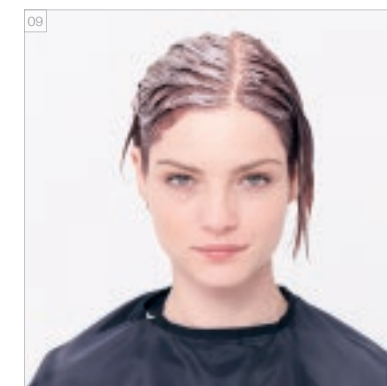
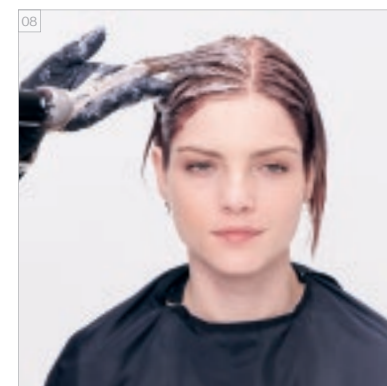
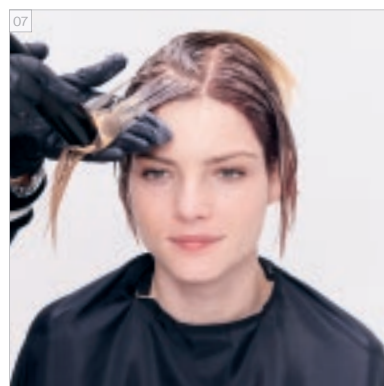
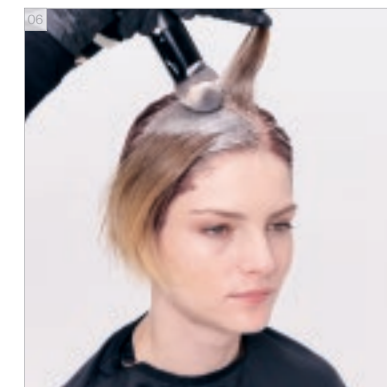
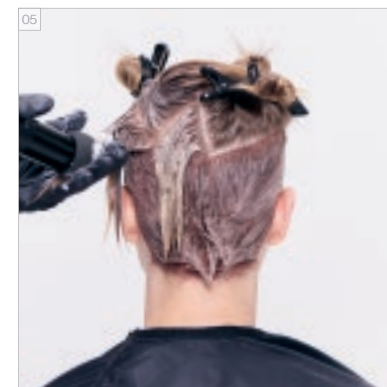
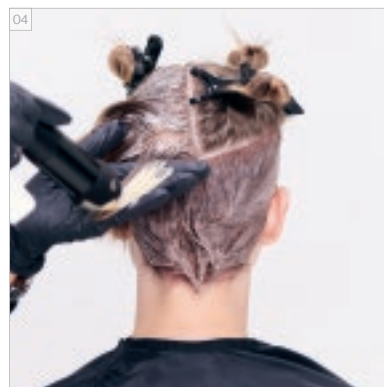
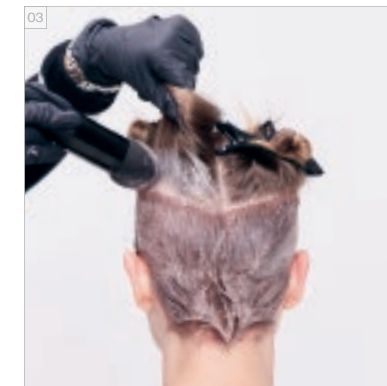
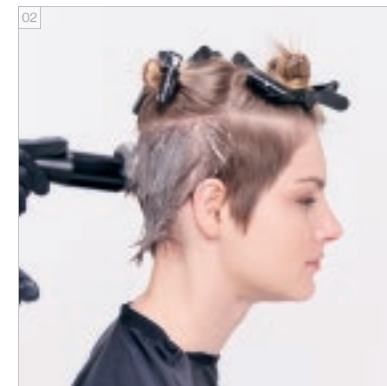
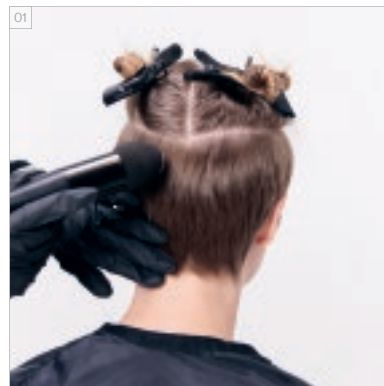
For more information and to get inspired watch our Essential Looks Trendreport: www.essentiallooks.com/2020-2

Weitere Informationen und Inspiration erhältst du in unserem Essential Looks-Trendreport: www.essentiallooks.com/2020-2

CUT STEP BY STEPS
STEP BY STEP - SCHNITT



COLOUR STEP BY STEPS
STEP BY STEP - FARBE



COLOURS USED

BASE COLOUR SIDES & NAPE: IGORA ROYAL 6-491 + IGORA ROYAL OIL DEVELOPER 3%/10VOL. (1:1)
ALTERNATE TOP LENGTH & ENDS:
COLOUR 1 - IGORA ROYAL 6-491 + IGORA ROYAL OIL DEVELOPER 3%/10VOL. (1:1)
COLOUR 2 - IGORA ROYAL 7-48 + IGORA ROYAL OIL DEVELOPER 6%/20VOL. (1:1)
COLOUR 3 - IGORA ROYAL 9-674 + 8-849 + IGORA ROYAL PASTELFIER (1:1:2) + IGORA ROYAL OIL DEVELOPER 9%/30VOL. (1:1)
BC pH 4.5 COLOR FREEZE SULFATE-FREE MICELLAR SHAMPOO
BC PH 4.5 COLOR FREEZE TREATMENT // BC UV FILTER COLOR FREEZE LIQUID SHINE

VERWENDETE FARBEN

GRUNDFARBE SEITLICHE KONTUREN UND NACKEN: IGORA ROYAL 6-491 + IGORA ROYAL OIL DEVELOPER 3% (1:1)
ABWECHSELND IN LÄNGEN & SPITZEN:
FARBE 1 - IGORA ROYAL 6-491 + IGORA ROYAL OIL DEVELOPER 3% (1:1)
FARBE 2 - IGORA ROYAL 7-48 + IGORA ROYAL OIL DEVELOPER 6% (1:1)
FARBE 3 - IGORA ROYAL 9-674 + 8-849 + IGORA ROYAL PASTELFIER (1:1:2) + IGORA ROYAL OIL DEVELOPER 9% (1:1)
BC pH 4.5 COLOR FREEZE SULFATE-FREE MICELLAR SHAMPOO
BC pH 4.5 COLOR FREEZE TREATMENT // BC UV FILTER COLOR FREEZE LIQUID SHINE

