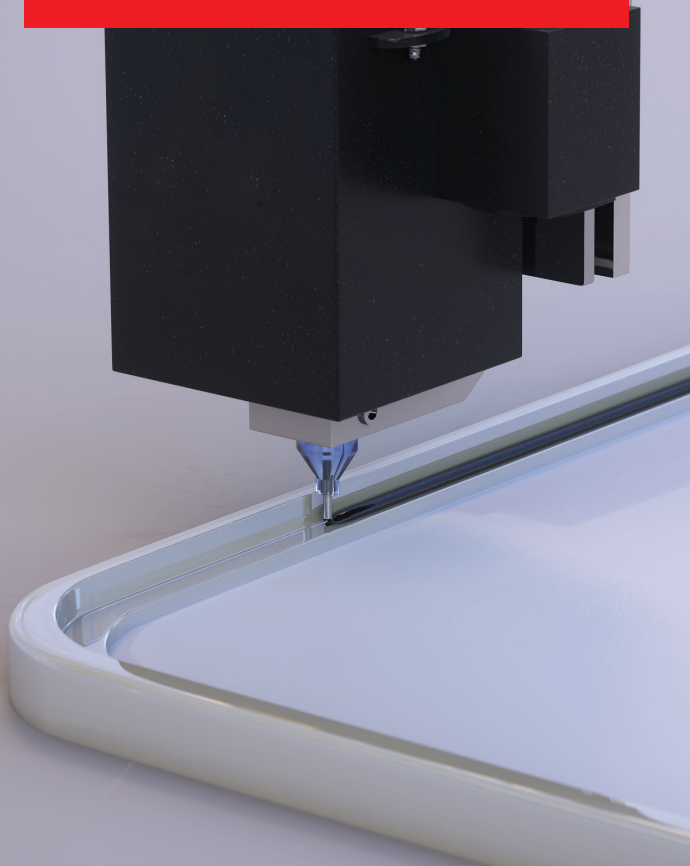


## AUTOMOTIVE DISPLAY SOLUTIONS



### Structural Bonding solution for Automotive Displays **Polyurethane-based reactive (PUR) hotmelt**

Henkel's LOCTITE one- component PUR hotmelt adhesive is a soft and flexible adhesive particularly suitable for bonding dissimilar substrates. It is applicable for super narrow bond lines and shows better bonding strength than conventional adhesive tape.

LOCTITE PUR hotmelt series are suitable for the requirements such as:

- Bond dissimilar substrates and gap filling
- High creep resistance and reliability under thermal cycle condition
- Fully automated process realization for efficient component production

Henkel is a partner capable of providing materials and finding solutions to help drive advances in automotive displays.



## Typical applications

- » Head up displays
- » Center information displays
- » Instrument clusters
- » Front and rear (seat) entertainment displays
- » Side and rear-view e-mirrors



## Features & Benefits

- » One component adhesive
- » Low application temperature (90-110°C)
- » Non-silicone (no out-gassing)
- » Variable open times
- » Cures at room temperature with moisture reaction
- » Bond dissimilar substrates with different CTEs
- » High temp & chemical resistance
- » Applicable for narrow bond lines (< 0.1mm width)

## Waste reduction



Henkel's bonding solutions are reducing the waste largely in production of automotive displays compared with adhesive tapes which are conventionally used in this area.

PRODUCT	LOCTITE® HDD 3573	LOCTITE® HDD 3593	LOCTITE® HDD 3597
COLOR	Black	Black	Black
VISCOSITY, MPA S (UNCURED)	3,500-7,000	5,500-6,000	4,500-7,000
HARDNESS, SHORE D (CURED)	35	20	35
ELONGATION, % (CURED)	839	860	892
OPEN TIME, MIN	2	6	1.5
FEATURES	<ul style="list-style-type: none"> <li>• Soft, Short open time</li> <li>• Designed for light interception</li> </ul>	<ul style="list-style-type: none"> <li>• Very soft</li> <li>• Long open time</li> </ul>	<ul style="list-style-type: none"> <li>• Soft, Very short open time</li> <li>• High initial strength</li> <li>• Designed for light interception</li> </ul>

Reach out to our experts to partner up for adhesive applications in automotive electronics.

### EUROPE

#### GERMANY

Henkel AG & Co. KGaA  
 (Headquarters) Henkelstraße 67  
 40589 Düsseldorf  
 Phone: +49 211 797-0

### AMERICAS

#### U.S.A.

Henkel Corporation Madison Heights  
 32100 Stephenson Highway Madison  
 Heights, MI 48071 Phone: +1 248 583 9300

### ASIA-PACIFIC

#### CHINA

Henkel (China) Investment Co., Ltd.  
 Building 7 & Building 6 (5F-6F), The Springs  
 Center No.99 Jiang Wan Cheng Road Yang  
 Pu District, Shanghai 200438  
 Phone: +86 21 2891 8000

Or visit: [www.henkel-adhesives.com/automotive, display solutions](http://www.henkel-adhesives.com/automotive_display_solutions)