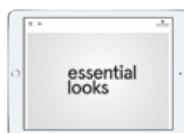
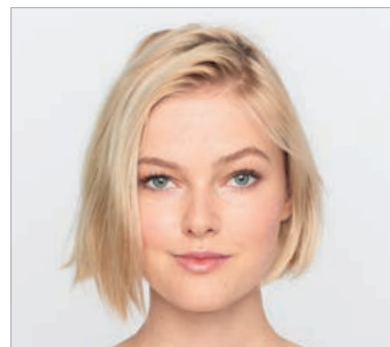


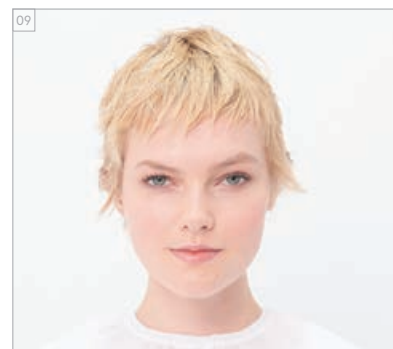
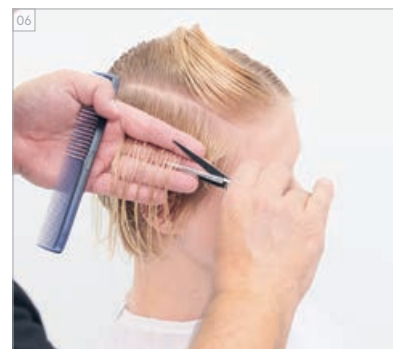
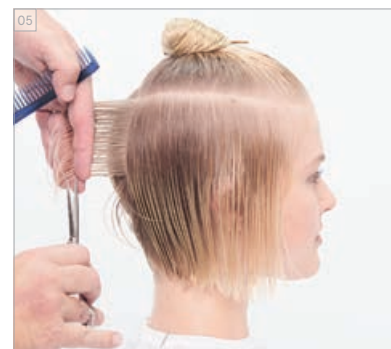
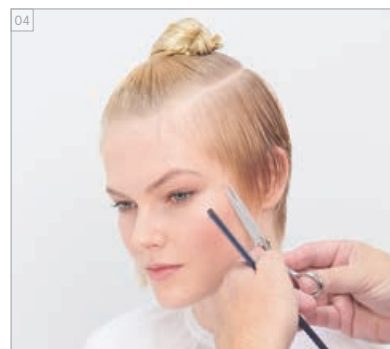
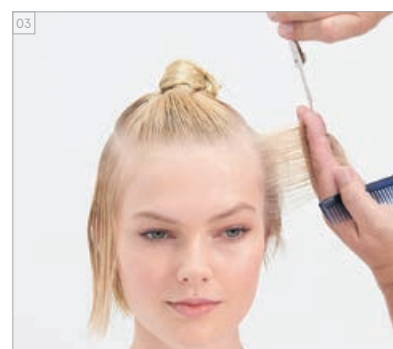
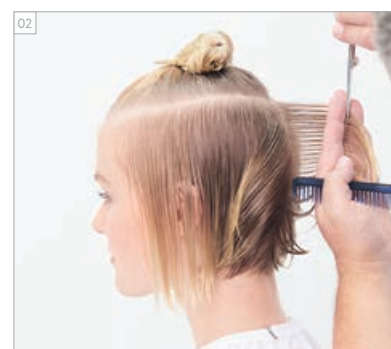
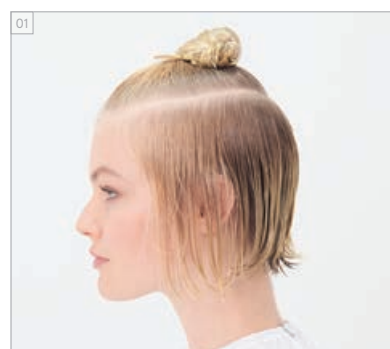
MAGICAL WHIMSY CATWALK

AVANT // APRES
BEFORE // AFTER



Pour plus d'informations et d'inspirations, jetez un oeil à #MagicalWhimsy et au Trendreport: www.essentiallooks.com/2021-1/trend1
Guarda il nostro #MagicalWhimsy Trendreport: www.essentiallooks.com/2021-1/trend1

COUPE ÉTAPE PAR ÉTAPE
CUT STEP BY STEPS



PRODUITS UTILISÉS
PRODUCTS USED

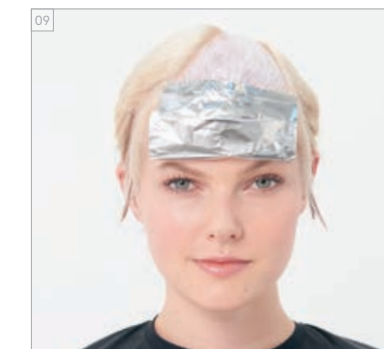
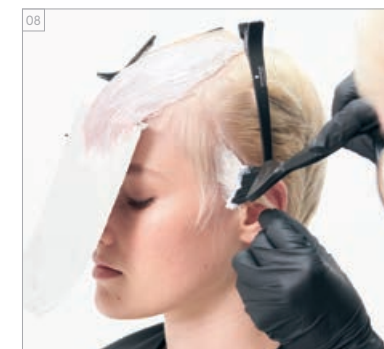
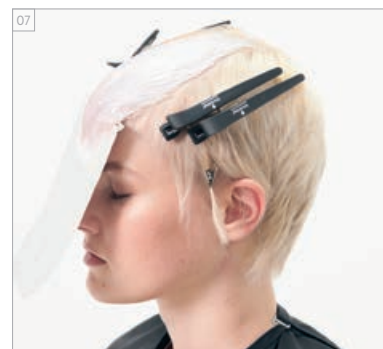
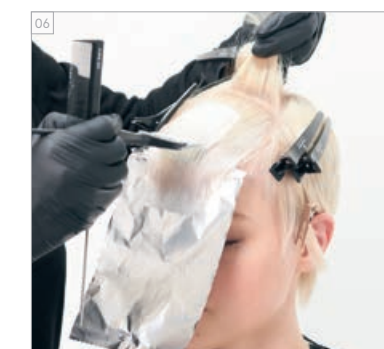
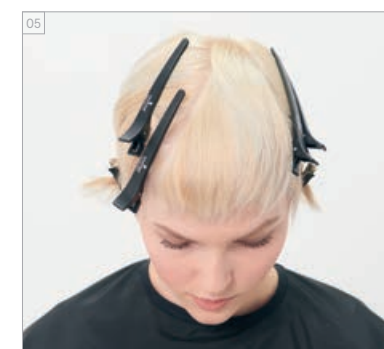
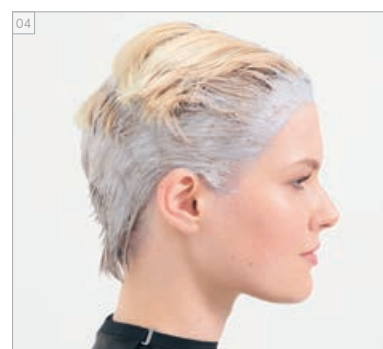
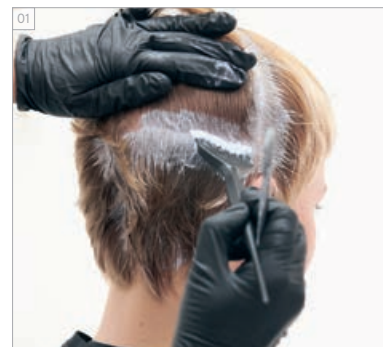


Photographies retouchées

#EssentialLooks

COLOUR TECHNIQUE #triangularplacement by @violandsky

COULEUR ÉTAPE PAR ÉTAPE
COLOUR STEP BY STEPS



CRÈMES DE COLORATION UTILISÉES

- COULEUR 1 – SUR LES RACINES : IGORA ROYAL HIGHLIGHTS 12-1 + 12-2 (2:1) + RÉVÉLATEUR ENRICHI EN HUILE IGORA ROYAL 9%/30VOL. (1:2)
- COULEUR 2 – SUR LES LONGUEURS ET LES POINTES : IGORA ROYAL HIGHLIGHTS 12-1 + 12-2 (2:1) + RÉVÉLATEUR ENRICHI EN HUILE IGORA ROYAL 12%/40VOL. (1:2)
- COULEUR 3 – TRIANGLE : IGORA ROYAL 9,5-49 + 0-99 (10:1) + RÉVÉLATEUR ENRICHI EN HUILE IGORA ROYAL 3%/10VOL. (1:1)

SOINS UTILISÉS

- FIBRE CLINIX SHAMPOING TRIBOND
- FIBRE CLINIX MASQUE TRIBOND POUR CHEVEUX FINS 25 g
- + FIBRE CLINIX BOOSTER DE VOLUME PHYTKINE 5 g

COIFFANT UTILISÉS

- OSIS+ HAIRBODY
- OSIS+ BEACH TEXTURE
- OSIS+ FREEZE

COLOURS USED

- COLOUR 1 – RADICI: IGORA ROYAL HIGHLIGHTS 12-1 + 12-2 (2:1) + IGORA ROYAL OIL DEVELOPER 9%/30VOL. (1:2)
- COLOUR 2 – LUNGHEZZE E PUNTE: IGORA ROYAL HIGHLIGHTS 12-1 + 12-2 (2:1) + IGORA ROYAL OIL DEVELOPER 12%/40VOL. (1:2)
- COLOUR 3 – TRIANGOLO: IGORA ROYAL 9,5-49 + 0-99 (10:1) + IGORA ROYAL OIL DEVELOPER 3%/10VOL. (1:1)

CARE USED

- FIBRE CLINIX TRIBOND SHAMPOO
- FIBRE CLINIX TRIBOND TREATMENT FOR FINE HAIR 25 g
- + FIBRE CLINIX VOLUMIZE BOOSTER 5 g

STYLING USED

- OSIS+ HAIRBODY
- OSIS+ BEACH TEXTURE
- OSIS+ FREEZE