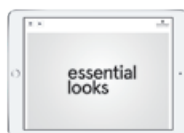
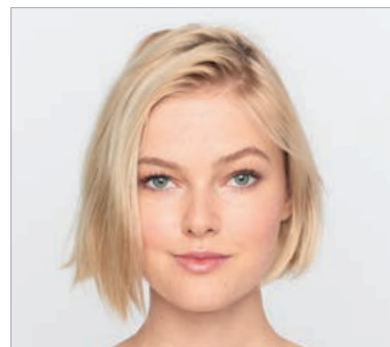


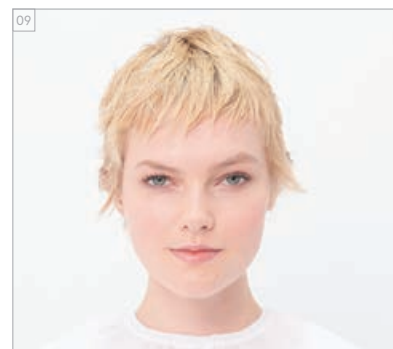
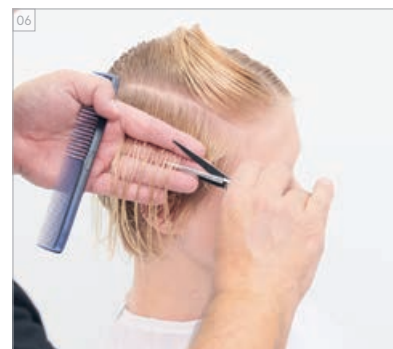
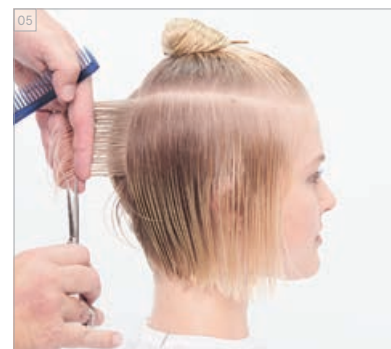
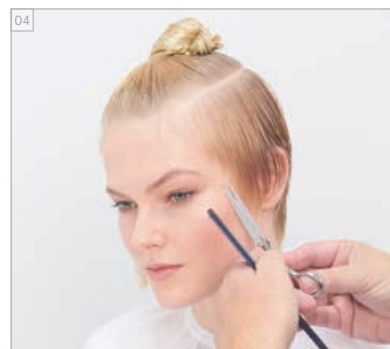
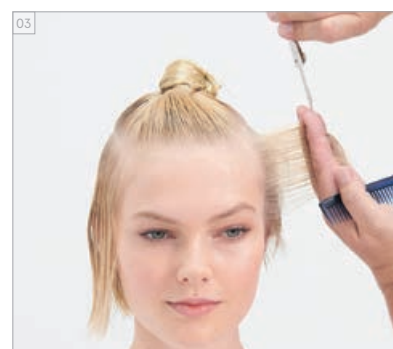
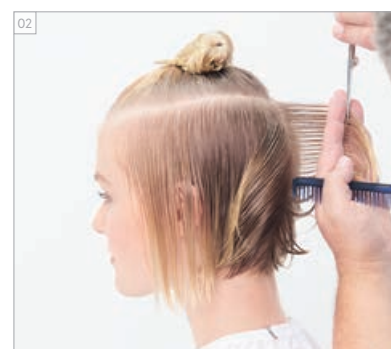
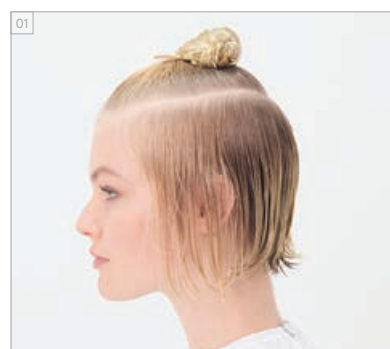
# MAGICAL WHIMSY CATWALK

ANTES // DESPUÉS  
ANTES // DEPOIS



Para obtener más información e inspiración, echa un vistazo al Informe de tendencias #MagicalWhimsy en: [www.essentiallooks.com/2021-1/trend1](http://www.essentiallooks.com/2021-1/trend1)  
Para mais informações e para obter inspiração, consulta o nosso Relatório de Tendência #MagicalWhimsy: [www.essentiallooks.com/2021-1/trend1](http://www.essentiallooks.com/2021-1/trend1)

CORTE PASO A PASO  
PASSO A PASSO - CORTE



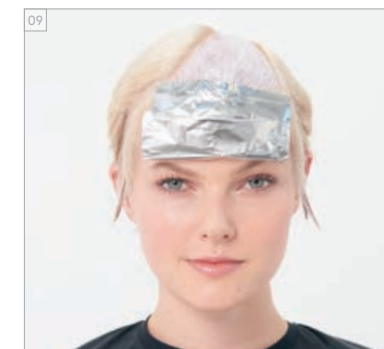
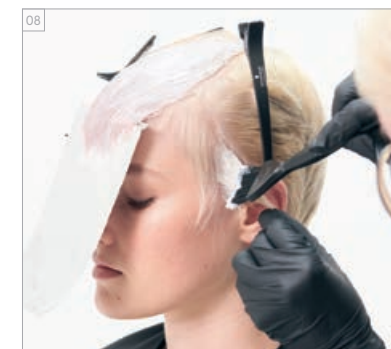
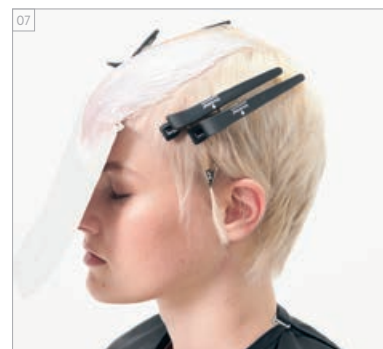
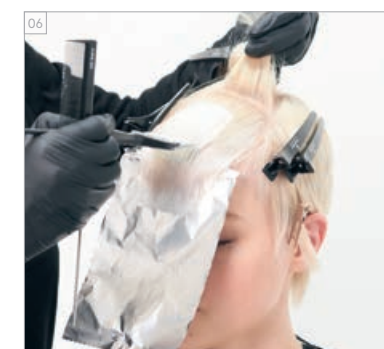
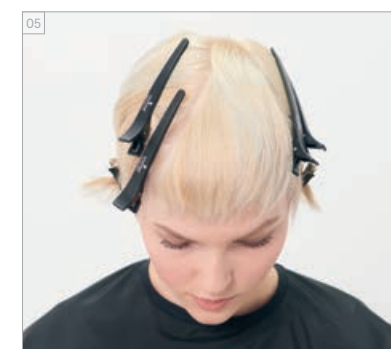
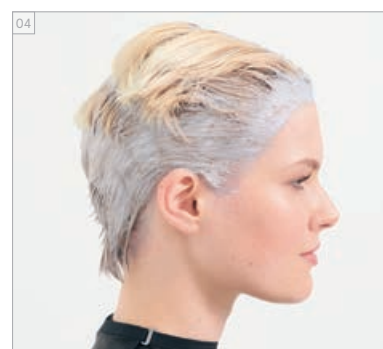
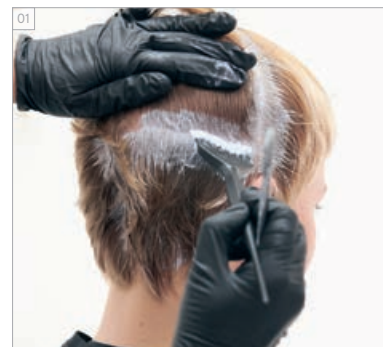
PRODUCTOS EMPLEADOS  
PRODUTOS USADOS



## #EssentialLooks

## COLOUR TECHNIQUE #triangularplacement by @violandsky

COLOR PASO A PASO  
PASSO A PASSO - COLORAÇÃO



### COLORES UTILIZADOS

- COLOR 1 - EN LAS RAÍCES: IGORA ROYAL HIGHLIGHTS 12-1 + 12-2 (2:1) + IGORA ROYAL LOCIÓN ACTIVADORA 9%/30VOL. (1:2)
- COLOR 2 - EN LARGOS Y PUNTAS: IGORA ROYAL HIGHLIGHTS 12-1 + 12-2 (2:1) + IGORA ROYAL LOCIÓN ACTIVADORA 12%/40VOL. (1:2)
- COLOR 3 - TRIÁNGULO: IGORA ROYAL 9,5-49 + 0-99 (10:1) + IGORA ROYAL LOCIÓN ACTIVADORA 3%/10VOL. (1:1)

### TRATAMIENTO APLICADO

- CHAMPÚ FIBRE CLINIX TRIBOND
- TRATAMIENTO FIBRE CLINIX TRIBOND PARA CABELLO FINO 25 g + POTENCIADOR DE VOLUMEN FIBRE CLINIX VOLUMIZE BOOSTER 5 g

### PRODUCTOS DE ACABADO UTILIZADOS

- OSIS+ HAIRBODY
- OSIS+ BEACH TEXTURE
- OSIS+ FREEZE

### CORES USADAS

- COR 1 - NAS RAÍZES: IGORA ROYAL HIGHLIGHTS 12-1 + 12-2 (2:1) + IGORA ROYAL LOÇÃO ATIVADORA 9%/30VOL. (1:2)
- COR 2 - NOS MEIOS E PONTAS: IGORA ROYAL HIGHLIGHTS 12-1 + 12-2 (2:1) + IGORA ROYAL LOÇÃO ATIVADORA 12%/40VOL. (1:2)
- COR 3 - TRIÂNGULO: IGORA ROYAL 9,5-49 + 0-99 (10:1) + IGORA ROYAL LOÇÃO ATIVADORA 3%/10VOL. (1:1)

### CUIDADO USADO

- CHAMPÔ FIBRE CLINIX TRIBOND
- MÁSCARA FIBRE CLINIX TRIBOND PARA CABELOS FINOS 25 g + BOOSTER FIBRE CLINIX VOLUMIZE 5 g

### FINALIZAÇÃO USADA

- OSIS+ HAIRBODY
- OSIS+ BEACH TEXTURE
- OSIS+ FREEZE