

MAGICAL WHIMSY CATWALK

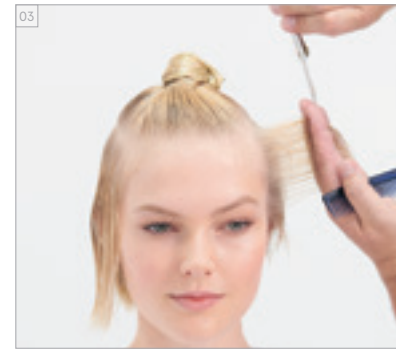
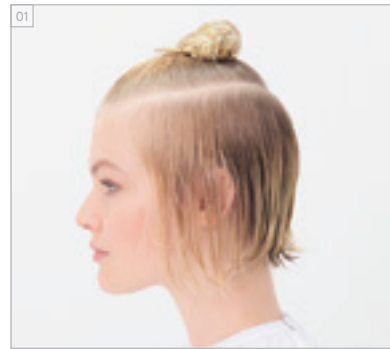
BEFORE // AFTER
BEFORE // AFTER



For more information and get inspired, have a look at the #MagicalWhimsy Trendreport: www.essentiallooks.com/2021-1/trend1

For more information and get inspired, have a look at the #MagicalWhimsy Trendreport: www.essentiallooks.com/2021-1/trend1

CUT STEP BY STEPS
CUT STEP BY STEPS



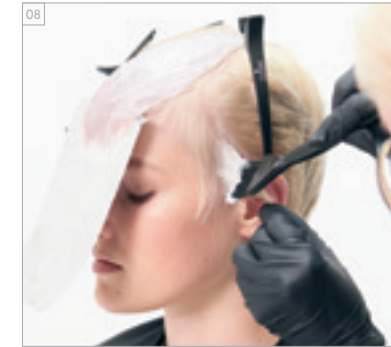
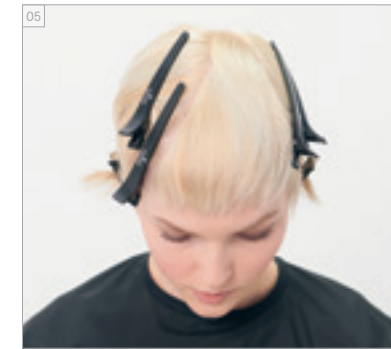
PRODUCTS USED
PRODUCTS USED



#EssentialLooks

COLOUR TECHNIQUE #triangularplacement by @violandsky

COLOUR STEP BY STEPS
COLOUR STEP BY STEPS



COLOURS USED

- COLOUR 1 - ON ROOTS: IGORA ROYAL HIGHLIGHTS 12-1 + 12-2 (2:1) + IGORA ROYAL OIL DEVELOPER 9%/30VOL. (1:2)
- COLOUR 2 - ON LENGTHS & ENDS: IGORA ROYAL HIGHLIGHTS 12-1 + 12-2 (2:1) + IGORA ROYAL OIL DEVELOPER 12%/40VOL. (1:2)
- COLOUR 3 - TRIANGLE: IGORA ROYAL 9,5-49 + 0-99 (10:1) + IGORA ROYAL OIL DEVELOPER 3%/10VOL. (1:1)

CARE USED

- FIBRE CLINIX TRIBOND SHAMPOO
- FIBRE CLINIX TRIBOND TREATMENT FOR FINE HAIR 25 g
- + FIBRE CLINIX VOLUMIZE BOOSTER 5 g

STYLING USED

- OSIS+ HAIRBODY
- OSIS+ BEACH TEXTURE
- OSIS+ FREEZE

COLOURS USED

- COLOUR 1 - ON ROOTS: IGORA ROYAL HIGHLIGHTS 12-1 + 12-2 (2:1) + IGORA ROYAL OIL DEVELOPER 9%/30VOL. (1:2)
- COLOUR 2 - ON LENGTHS & ENDS: IGORA ROYAL HIGHLIGHTS 12-1 + 12-2 (2:1) + IGORA ROYAL OIL DEVELOPER 12%/40VOL. (1:2)
- COLOUR 3 - TRIANGLE: IGORA ROYAL 9,5-49 + 0-99 (10:1) + IGORA ROYAL OIL DEVELOPER 3%/10VOL. (1:1)

CARE USED

- FIBRE CLINIX TRIBOND SHAMPOO
- FIBRE CLINIX TRIBOND TREATMENT FOR FINE HAIR 25 g
- + FIBRE CLINIX VOLUMIZE BOOSTER 5 g

STYLING USED

- OSIS+ HAIRBODY
- OSIS+ BEACH TEXTURE
- OSIS+ FREEZE