



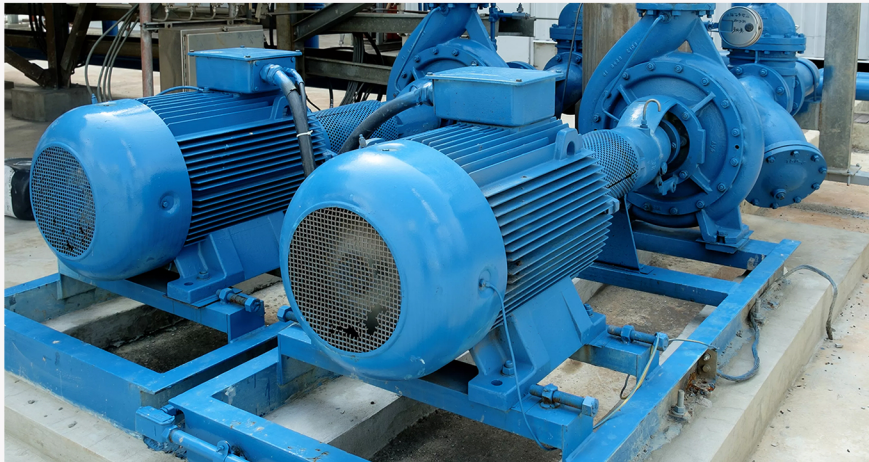
LOCTITE[®]

SECURE PUMPS AND MOTORS USING LOCTITE[®] THREADLOCKERS

LOCTITE[®] **243**[™] THREADLOCKER
LOCTITE[®] **SF 770**[™] PRIMER



Henkel Adhesive Technologies



Customer Challenge

A facilities maintenance team was experiencing premature failure of the bearings in their centrifugal pumps. This was caused by shaft misalignment and happened during times of high use. Alignment is critical to the life of the pump and premature failure increases costs of downtime, labor and parts. The customer wanted to prevent these unexpected downtimes, and instead perform repairs at a convenient scheduled time.

Henkel Solution

Team LOCTITE® recommended LOCTITE® 243™ alongwith LOCTITE® SF 770™. The nuts and bolts on the pump are cleaned with LOCTITE® SF 770™ then LOCTITE® 243™ is applied to the bolts which is then aligned using normal techniques before applying proper torque to the fasteners. The pumps will now be able to maintain alignment at least until the next planned maintenance interval at 3 years. This will allow the company to avoid a catastrophic breakdown, save money on maintenance, and ensure fluids will continue to be pumped.

Benefits

- Enables scheduled maintenance intervals
- Reduces maintenance costs
- Increases reliability
- Reduces failure rate

