

LOOK



BOOK

CONTINUING THE
**YEAR OF
COLOUR**

The journey of colour continues with our latest collection - the Autumn Winter Edition of the Year of Colour.

As we step into the new season, we bring you a fresh take on the Ode to Colour.

The vivid hues and bold statements that defined our Spring Summer collection now take on new life, adapting to the cool winds of autumn and the frosty embrace of winter.

With this new approach, we aim to inspire you, providing an array of colourful ideas that can be enjoyed all year round. So come along with us and discover the new chapter of the Year of Colour.

#SimplySmarterCOLOUR



DARE TO BE BOLD,
DARE TO BE COLOURFUL



COLOURS THAT CONNECT,
EMOTIONS THAT INSPIRE



EMBRACE THE POWER OF COLOUR
AND MAKE A STATEMENT



BREATHE COLOUR INTO YOUR LIFE
WITH ODE TO COLOUR

THE CREATORS



SITA ZOROA

@miss_sita_Zoróa

Indola Ambassador in Spain, #IndolaSelected member, salon owner in Barcelona, Indola colour expert



MILÉ KUMUROV

@urbanstudio_kumurov

Regional ambassador educator, #IndolaSelected member, salon owner in North Macedonia, Indola colour expert



GILLES

Experienced educator, Indola colour expert



ANDY SMITH

@andysmith_stylist

Global cut & styling ambassador, creative director based in London



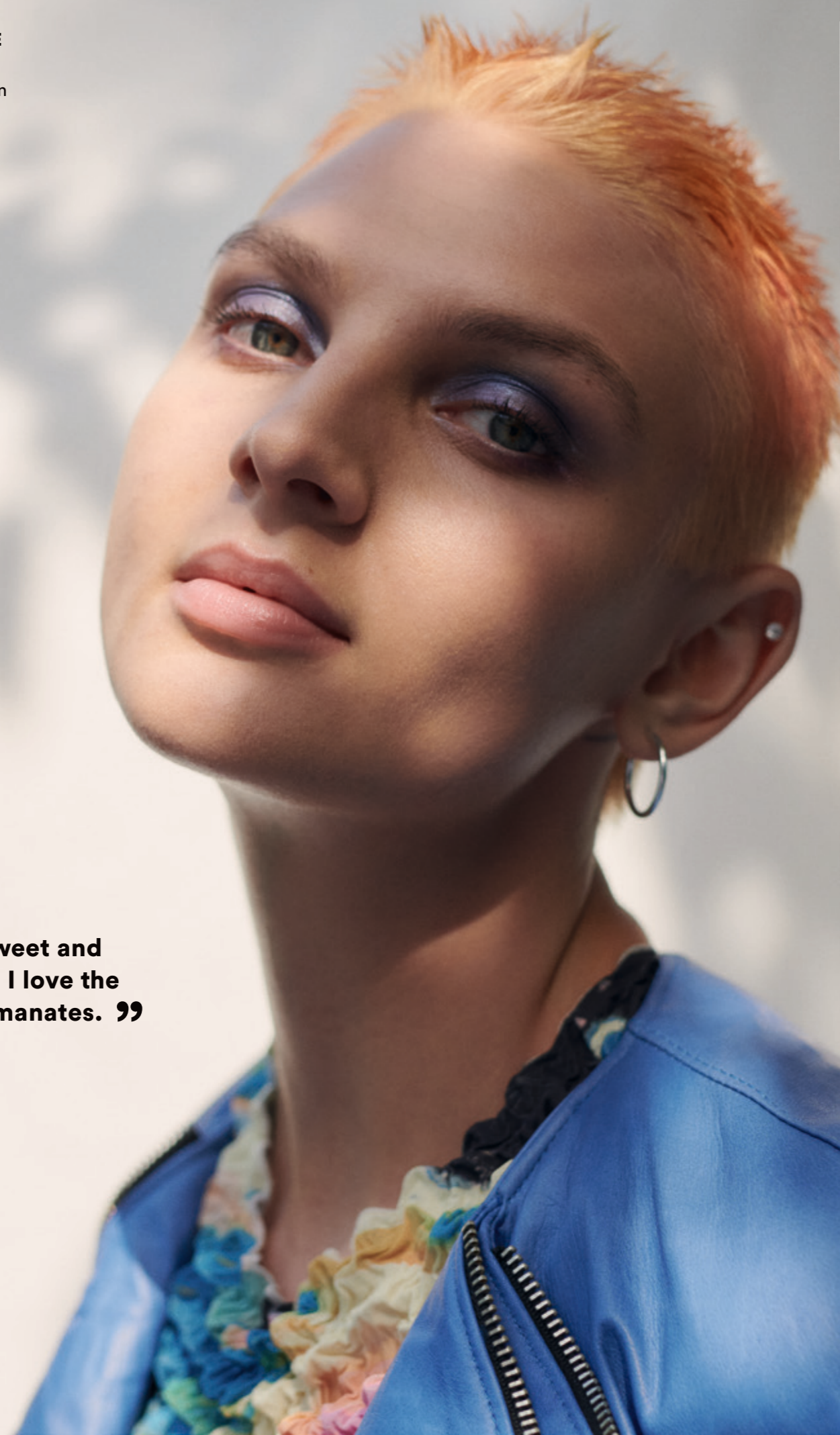
IOANNA AUSCHRA

@ioanna_Auschra

Fashion stylist based in Hamburg

THE CUT & STYLE
A daring, striking short bold elevation

THE COLOUR
A gradient in shades of apricot



“ It’s a very sweet and daring look. I love the joy that it emanates. ”

Sita, colourist

PEACH GRADATION



Summer was called Dazzling Expression; Winter is Peach Gradation. She turned from pants to skirt, but she remains the jeans muse.

Her hair is the true centerpiece, with apricot hues that symbolize hope and a sense of daring. With her short and enigmatic look, she invites you to join her on this colourful journey and make a statement with your own hair colour and style.



CREA-BOLD: The brilliant part is the possibility to combine the 8 shades with each other and create an unlimited number of new tones



CARE & STYLE Colour Treatment: When mixing it with CREA-BOLD you can pastelize a bold colour



ACT NOW! Shine Wax: The perfect styling vegan product to add a healthy-looking shine and definition

THE CUT & STYLE

A simple very long one-length cut

THE COLOUR

A mix of dark brown with intensive blue accents



“ This look gives me serenity and calm, while showcasing infinity depth like the Universe. It’s from the other space... It’s mysterious and beautiful... ”

Sita, colourist

BLUE INFINITY

Make a bold statement with The Blue Infinity - a daring hair colour choice that embodies optimism and creativity. This look is the ultimate eye-catcher, and this season's must-have hue. Ditch the old stereotypes of long hair and embrace your individuality with this fearless colour statement.



CREA-BOLD Indigo Blue:
It is a ready-to-use hair colour that gives you this brilliant bold result thanks to its shine-enhancing ingredients



BLONDE EXPERT Lightener:
Must have product to lighten hair, even dark bases, up to 9 lift levels, and prepare the perfect canvas for all looks



CARE & STYLE Smooth Serum:
Our best kept secret to give your hair a wonderful shine and frizz control

BUDAPEST X ODE TO COLOUR



Budapest: Where every shade is celebrated in the sky and architecture



Colours have the power to flood cities and hearts with optimism - Budapest proves it



Budapest's walls whisper 'fantasy' and 'escapism' - a city begging for creativity



THE CUT & STYLE

A pronounced razor cut with very strong gradations

THE COLOUR

Warm pastel blonde shades with lavender highlights

“ This look shows a striking and captivating display of lavender hues, inspired by the purple trend, that releases a subtle yet attracting charm. ”

Milé, colourist



CANDY EDGE



A Sweet Symphony of Colours. Step into the spotlight with this bold, bright and beautiful look. Inspired by the all-encompassing purple trend, the Candy Edge showcases a mesmerizing lavender hue that takes center stage. The digital lavender of the hair reminds also how virtual our planet has become. This look mirrors our society with a subtle sexy touch.



BLONDE EXPERT Pastels: Infused with Hair-Bond Technologie, they are perfect to use on pre lightened base to personalize your tailor-made blonde and neutralize unwanted tones. You can also intermix them with our Special Blonde shades for endless variations



BLONDE EXPERT Insta Cool Shampoo: Ideal for chemically treated blondes, this shampoo fights hair damage and instantly removes brassiness and yellow undertones for a gorgeous, long-lasting color result



THE CUT & STYLE

A medium to short curl haircut with narrow sides and a full crown

THE COLOUR

Different shades of copper with lighter accents

“This is one of my favorite looks. She looks so authentic. The t-shirt captures the movement of her hair, the movement of her curls.”

Ioanna, fashion stylist

EARTHY TEXTURE



The Earthy Texture brings back the rebellious energy of the 90s with its streetwear-inspired style. The wild curls, reminiscent of iconic musicians from that era, are balanced by the harmonious blend of copper and punchy yellow hues. Get ready to rock the grunge look with this hairstyle that infuses an electrifying spirit.



PCC: Enjoy the wide range of copper tones in PCC Fashion Range and enjoy a beautiful shine and long lasting colour retention



CREA-MIX: Combine this with our PCC products to personalize the tones and colours even more



CARE & STYLE Curl Cream: Infused with natural wax to provide excellent curl definition and control, while adding moisture and shine, all in a smooth, creamy texture that allows the easiest application



Colours have the power to inspire, uplift and transform our mood, and that's exactly what the Ode to Colour aims to do. The collection reminds us of the importance of self-expression and the role that colour plays in helping us express our inner selves.

From vibrant oranges and blues, to deep coppers and pinks, our palette has been a celebration of life, energy and creativity.

