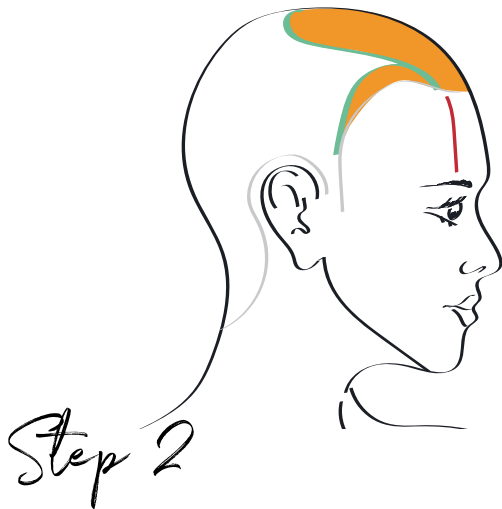
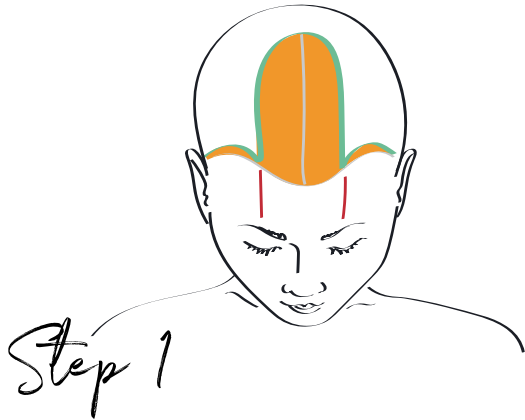


# T-Sectioning



Sectioning

Colour applied  
to regrowth

This process includes partial root colour application, leaving the back of the hair un-coloured. This service is recommended as a way of refreshing any previous colour. Isolate a T-shaped panel, incorporating the front outer hairline and the top crown section.

Introduce a block colouring technique to the new growth area. Seamlessly blend colour into the midlengths, ensuring a seamless colour transition, preventing colour banding. Allow to process according to instruction for use. Then rinse, emulsify and remove.

## Smart tip:

Ensure, that there is no overexaggerated colour deposit on mid-lengths in order to prevent unwanted darkening and colour banding. Introduce a demi permanent service on lengths and ends in case additional gloss is needed

### Products used:



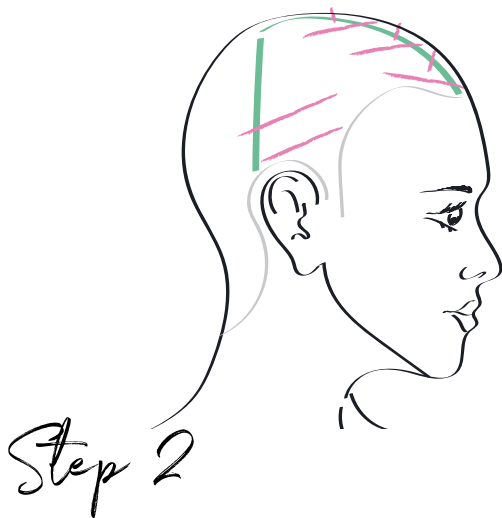
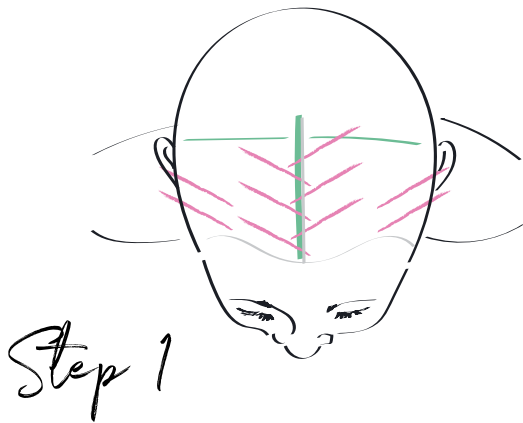
### Highlights:

- XPRESS COLOR
- CREAM DEVELOPER 6% - 20VOL.

### Toner:

- PCC NATURALS & ESSENTIALS +
- COLOR TRANSFORMER +
- CREAM DEVELOPER 4% - 13VOL.

# Ten Foils Technique



Sectioning

Permanent Colour

Working with diagonal back partings, proceed with two textured weave colour placements on each side.

Create a large V section at the top panel. Apply the highlighting technique by introducing textured weaves. Moving gradually to the crown area.

Allow to process according to instruction for use. Then rinse, emulsify and remove.

## Smart tip:

In case additional block coverage is needed, utilize a permanent shade at the entire root area.

To beautify the final look, utilize a demi-permanent toner to glaze highlights.

### Products used:



### Highlights:

- RAPID BLOND BLEACH +
- CREAM DEVELOPER 6% - 20VOL

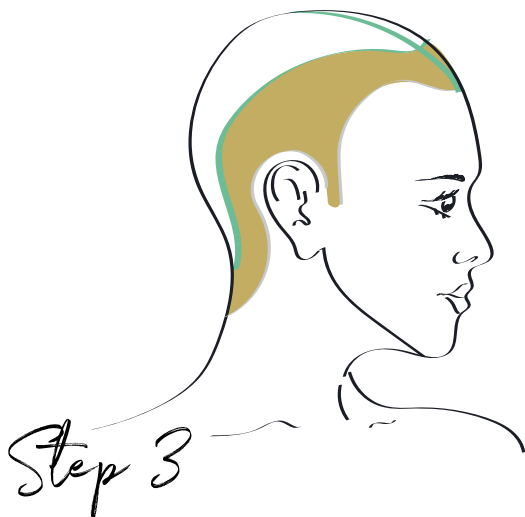
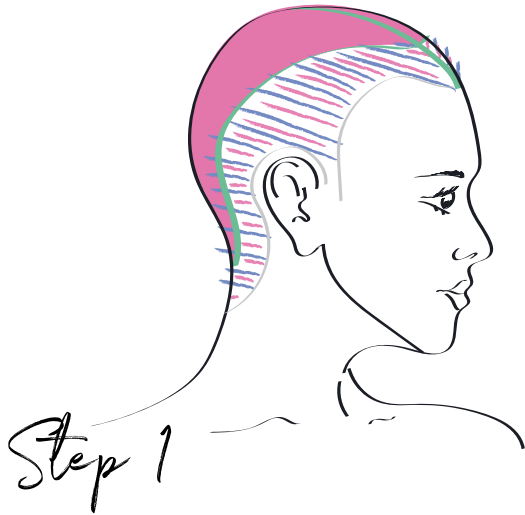
### Base Colour:

- PCC NATURALS & ESSENTIALS +
- CREAM DEVELOPER 6% - 20VOL

### Toner:

- PCC NATURALS & ESSENTIALS +
- COLOR TRANSFORMER +
- CREAM DEVELOPER 4% - 13VOL

# Quick Contouring Technique



Sectioning    Bleach Foils    Permanent Colour    Toning After Bleach

Introduce a curved diagonal back section to isolate the perimeter. Evenly work seamlessly highlighted weaves. Treat the root area with a permanent base colour, introducing a block colouring technique

Proceed with the top panel. Ensuring a uniform colour result by working a block colouring technique from roots to ends. Allow to process according to instruction for use. Then rinse, emulsify and remove.

Tone the outer perimeter. Apply the demi-permanent shade choice roots to ends. Visually process for up to 20 minutes and rinse, emulsify and remove.



**Products used:**



**Base Colour:**

- PCC NATURALS & ESSENTIALS +
- CREAM DEVELOPER 6% - 20VOL

**Highlights:**

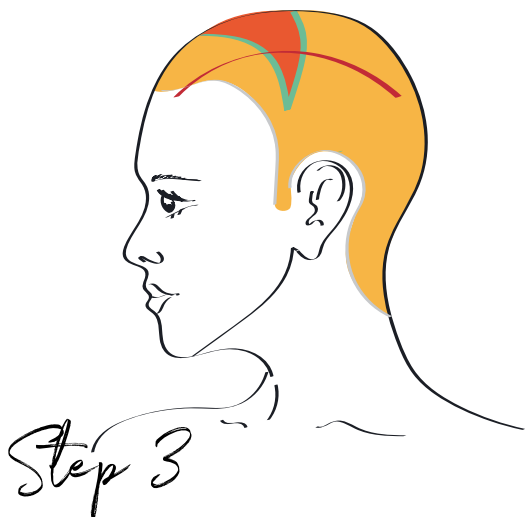
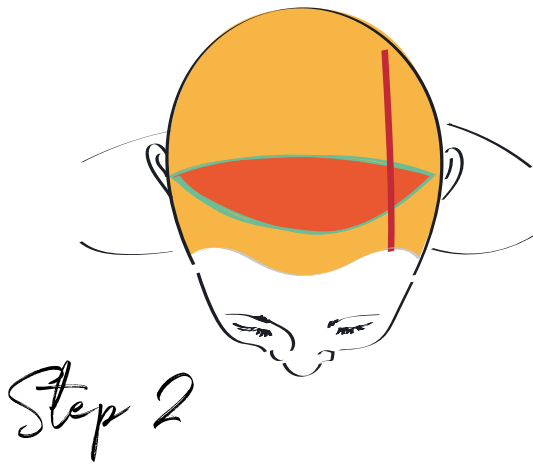
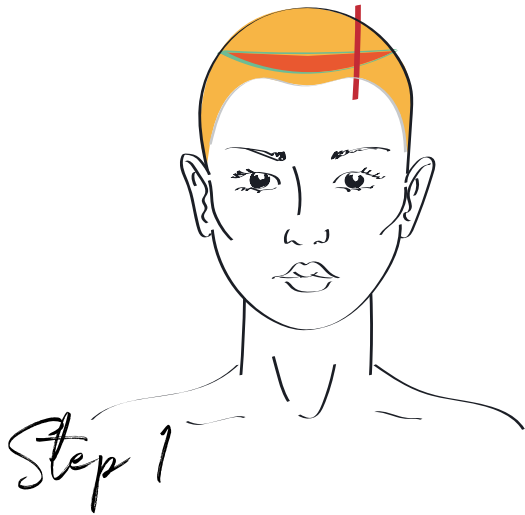
- RAPID BLOND BLEACH +
- CREAM DEVELOPER 6% - 20VOL

**Toner:**

- COLOR TRANSFORMER +
- PCC NATURALS & ESSENTIALS +
- CREAM DEVELOPER 4% - 13VOL



# Flashlight Technique



Sectioning

Natural  
Partition

Colour 1

Colour 2

Isolate an offset shape, that sits within the curvature of the front head shape. Ensure that this section is located within the fringe area.

Apply the highlight formula from the new growth through to the mid-lengths and ends. Continue in the same way until the section is complete.

Evenly apply the overall base colour, utilizing a block colouring technique. Allow to process according to instruction for use. Then rinse, emulsify and remove.

## Products used:

### Base Colour:

- PCC NATURALS & ESSENTIALS +
- CREAM DEVELOPER 6% - 20VOL

### Fashion Flashlight:

- PCC RED & FASHION +
- CREAM DEVELOPER 6% - 20VOL

