

# IGORA ROYAL ABSOLUTES

INSTRUCTIONS FOR USE



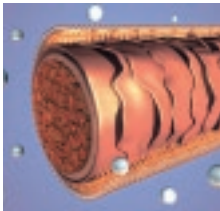
## IGORA ROYAL ABSOLUTES UNIQUELY ANSWERS THE DIVERSE NEEDS OF COVERAGE SEEKING WHITE HAIR CLIENTS

- 100% coverage with full fashion vibrancy
- Equal coverage also on thick and resistant hair
- Complete colour portfolio answering all coverage needs
- Extra care for mature hair via integrated Pro-Age-Complex with siliamine and collagen
- Superior shine and long-lasting results
- Strong reduction of ammonia smell due to Low Odour Technology

## SIX NEW FASHION SHADES

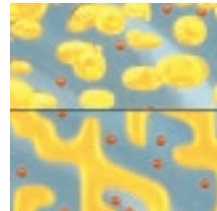


## TECHNOLOGY



### PRO-AGE-COMPLEX TECHNOLOGY

The Pro-Age-Complex with siliamine & collagen contains a long-chain care polymer with a Velcro-like backbone that adheres to the surface of the cuticle. The smooth top of the polymer creates a sleek, even surface for a perfect hair look and feel with maximum tone & shine.



### LOW ODOUR TECHNOLOGY

For a more pleasant colouration experience. The characteristic smell is caused by ammonia evaporating from water into air. The labyrinth-like oil structure cream base blocks the way for the ammonia to reach the surface, forcing it to navigate around the oil. This delays evaporation & significantly reduces smell.

## COLOUR NUMBERING SYSTEM

COLOUR DEPTH	TONE DIRECTION	COMBINATION					
	-0 natural	The system is based on a combination of 4 numbers.					
1- black	-1 cendré						
	-2 ash	<table border="1"> <thead> <tr> <th>THE NUMBER IN FRONT OF THE DASH (6-460)</th> <th>THE NUMBER(S) AFTER THE DASH (6-460)</th> </tr> </thead> <tbody> <tr> <td rowspan="9">Indicates the colour depth of the shade.</td> <td>The first number after the dash shows the major tone. The second number after the dash shows the minor tone or the number zero indicates a natural tone for white coverage.</td> </tr> <tr> <td>The third number zero after the dash indicates the natural tone for white coverage.</td> </tr> </tbody> </table>	THE NUMBER IN FRONT OF THE DASH (6-460)	THE NUMBER(S) AFTER THE DASH (6-460)	Indicates the colour depth of the shade.	The first number after the dash shows the major tone. The second number after the dash shows the minor tone or the number zero indicates a natural tone for white coverage.	The third number zero after the dash indicates the natural tone for white coverage.
THE NUMBER IN FRONT OF THE DASH (6-460)	THE NUMBER(S) AFTER THE DASH (6-460)						
Indicates the colour depth of the shade.	The first number after the dash shows the major tone. The second number after the dash shows the minor tone or the number zero indicates a natural tone for white coverage.						
	The third number zero after the dash indicates the natural tone for white coverage.						
	3- dark brown	-3 matt					
	4- medium brown	-4 beige					
	5- light brown	-5 gold					
	6- dark blonde	-6 chocolate					
	7- medium blonde	-7 copper					
	8- light blonde	-8 red					
	9- extra light blonde	-9 violet					

*Together. A passion for hair.*

## DEVELOPER USAGE

9% 30 VOL.

IGORA ROYAL OIL DEVELOPER:

- For white hair coverage & equalisation of up to 90% white hair
- Up to 3 levels of lift

6% 20 VOL.

IGORA ROYAL OIL DEVELOPER:

- For pure colour deposit on more than 90% white hair

## PROCESSING TIME



30–45 min.

## MIXING

60ml IGORA ROYAL  
ABSOLUTES Colour Creme

**1:1**

60ml IGORA ROYAL  
Oil Developer

## APPLICATION

To protect the hairline use IGORA Skin Protection Cream.  
Apply to dry, unwashed hair.



### RE-GROWTH APPLICATION

- Apply IGORA ROYAL Absolutes only to the re-growth area, taking fine sections.
- Leave to develop for 30–45 minutes.



### DUAL APPLICATION

The dual application is a professional application method that combines permanent hair colour for the re-growth area with demi- or semi-permanent hair colour for mid-lengths and ends. This system keeps hair lengths and ends in perfect condition for intense shine and gentle touch.

- Apply IGORA ROYAL Absolutes only to the re-growth area, taking fine sections. Leave to develop for 30–45 minutes.
- After 15–20 minutes (depends on development time of product used), apply the corresponding IGORA VIBRANCE or Chroma ID shade to the mid-lengths & ends.

## IGORA VIBRANCE VS. CHROMA ID SELECTION



### IGORA VIBRANCE

For even colour results, due to 50% coverage performance, and for a longevity of up to 25 washes.

**Development time:** 15–20 minutes.



### CHROMA ID

For quick and gentle colour refreshes, refinements, additional care and smoothness while keeping the existing highs and lows.

**Development time:** Up to 10 minutes.  
Always apply on towel dried hair.

## IGORA ROYAL EXPERT KIT

The IGORA ROYAL Expert Kit provides the professional A to Z support you need for creating amazing colours and offering a perfect colour service. For detailed product information & usage instructions, please refer to the IGORA ROYAL instructions for use.