

# THE IGORA<sup>®</sup> NUMBERING SYSTEM



The system is based on a combination of numbers. The number in front of the dash (**7-57**): **Indicates the ideal depth and base for the shade.** The number(s) after the dash (**7-57**): First number after the dash **indicates the primary tone direction.** The second number after the dash **shows the secondary tone (minor tone)** or the number zero indicates a neutral tone to achieve additional white blending.

The **IGORA VIBRANCE** color wheel provides a clear overview of where each **IGORA VIBRANCE** shade falls within the spectrum and helps you choose the correct formula for every client.

# 7 - 57

## Level of depth:

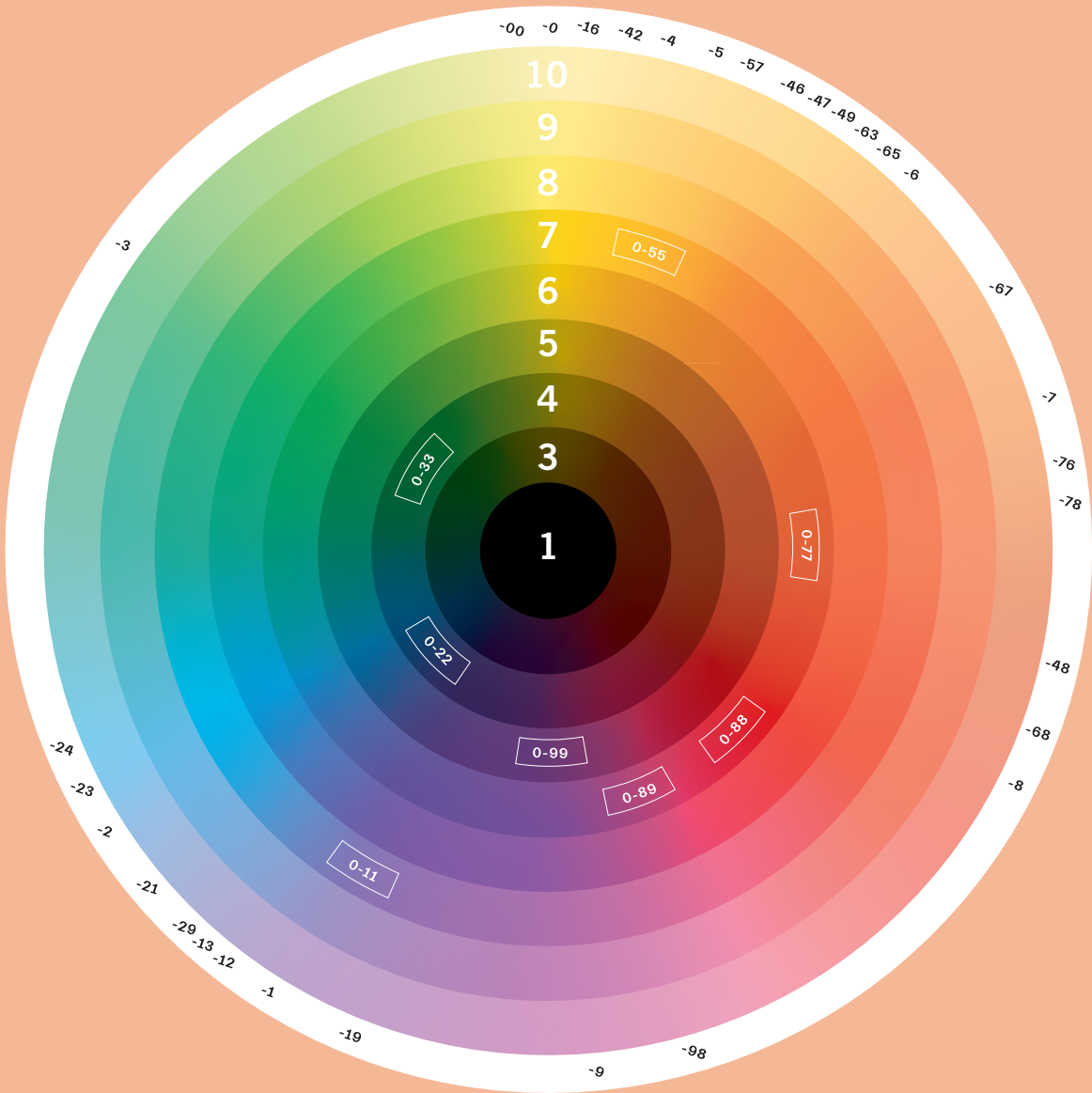
- 1** black
- 3** dark brown
- 4** medium brown
- 5** light brown
- 6** dark blonde
- 7** medium blonde
- 8** light blonde
- 9** extra light blonde
- 10** ultra blond

## Tone direction:

- 0** natural (neutral)
- 1** cendré (blue/violet)
- 2** ash (blue)
- 3** matte (green)
- 4** beige (muted gold)
- 5** gold (gold)
- 6** chocolate (warm brown)
- 7** copper (orange)
- 8** red (red)
- 9** violet (violet)

## How to Use the Color Wheel:

- + Each ring on the color wheel represents a different base level, with level 1 at the center and higher levels moving outward.
- + The tonal directions are displayed along the outer white ring that surrounds the color wheel. A tonal direction refers to the reflective tone of the color—such as cendré, gold, violet, etc. These tones are used to either neutralize underlying pigments or to enhance a desired tone.
- + To find a shade like 6-0, start by locating the level 6 ring on the wheel, then follow outward to -0 on the white ring. The spot on the level 6 wheel that is directly across from -0 is the tonal direction of the color.



The **IGORA ROYAL** color wheel provides a clear overview of where each **IGORA ROYAL** shade falls within the spectrum and helps you choose the correct formula for every client.

To keep things simple and create a system that's effective and easy to use, ours is based on a combination of up to 3 numbers.

**5-** **The number in front of the dash**

- Indicates the depth of the shade.
- Tells you the ideal base to choose in order to achieve true-to-swatch results.

**-88** **The number(s) after the dash**

- The first number after the dash represents the primary tone direction (the dominant shade).
- The second number after the dash indicates the secondary tone direction (the secondary shade).

**Depth/base shade:**

- 1- Black
- 3- Dark brown
- 4- Medium brown
- 5- Light brown
- 6- Dark blonde
- 7- Medium blonde
- 8- Light blonde
- 9- Extra light blonde
- 10- Ultra blonde

### Tone direction:

- 0 Natural (neutral)
- 1 Cendré (blue/violet)
- 2 Ash (blue)
- 3 Matte (green)
- 4 Beige (muted gold)
- 5 Gold (gold)
- 6 Chocolate (warm brown)
- 7 Copper (orange)
- 8 Red (red)
- 9 Violet (violet)

- + Each ring on the color wheel represents a different base level, with level 1 at the center and higher levels moving outward.
- + The tonal directions are displayed along the outer white ring that surrounds the color wheel. A tonal direction refers to the reflective tone of the color—such as cendré, gold, violet, etc. These tones are used to either neutralize underlying pigments or to enhance a desired tone.
- + To find a shade like 6–0, start by locating the level 6 ring on the wheel, then follow outward to –0 on the white ring. The spot on the level 6 wheel that is directly across from –0 is the tonal direction of the color.

