

# FIBRE CLINIX IN-SALON SERVICES

Choose between permanent repair with the BONDFINITY In-Salon Service to create the strongest bonds or immediate repair with the BONDXTEND In-Salon Service for instant, transformative results.



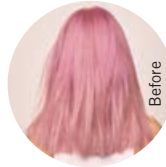
## BONDFINITY SERVICE

The In-Salon range features the groundbreaking **BONDFINITY TECHNOLOGY**, creating **permanent bonds** in the inner core of the hair fibre (covalent bonds) and **locking in the hair's own keratin** – for **up to 90% reversed damage** and **10 times stronger hair\***! Three new boosters further allow to customise the in-salon service to each client's hair type.

\* vs. untreated hair



### Example Scenario



Hair is coarse, damaged or over-processed and in need of strengthening and repair. The client is concerned about hair manageability and smoothness.

### Product Choice



Nourishing Shampoo



Treatment for coarse hair



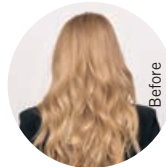
Vibrancy Booster

### Service Steps



- Cleanse hair with Nourishing Shampoo
- Mix one scoop (25g) of Treatment with up to 10 pumps of Vibrancy Booster
- Apply in sections to mid-lengths and ends.
- Leave to process for 5-10 minutes. Rinse thoroughly.

### Example Scenario



Hair is fine and slightly porous. Regularly coloured blonde and highlighted. The client seeks quick fix.

### Product Choice



Purifying Shampoo

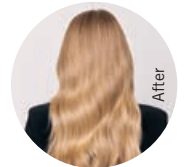


Treatment for fine to medium hair



Fortify Booster

### Service Steps



- Cleanse hair with Purifying Shampoo
- Mix one scoop (25g) of Treatment with up to 10 pumps of Fortify Booster
- Apply in sections to mid-lengths and ends.
- Leave to process for 5-10 minutes. Rinse thoroughly.

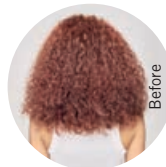
## BONDXTEND SERVICE

For **instant results** and a quick in-salon service, **FIBRE CLINIX** additionally offers a range of in-salon shampoos and conditioners dedicated to specific hair needs, as well as a **new Instant Infusion Concentrate**, all featuring the **BONDXTEND TECHNOLOGY**, for instant and immediate visible, transformative repair results.

Scan for complete portfolio



### Example Scenario



Hair is medium texture, curly with a demi-permanent colour. The client primarily wishes additional shine and softness.

### Product Choice



Hydrate Shampoo



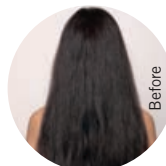
Hydrate Conditioner

### Service Steps



- Cleanse hair with Hydrate Shampoo
- Apply Hydrate Conditioner through the lengths and ends of damp hair. Rinse after 2 minutes.

### Example Scenario



Hair tends to be overburdened, coloured with a demi-permanent colour. Client is concerned about frizz.

### Product Choice



Vibrancy Shampoo



Instant Infusion Concentrate

### Service Steps



- Cleanse hair with Vibrancy Shampoo
- Apply 10-20ml of Concentrate directly on damp hair, or mix with equal amounts of water in a bowl to transform its consistency into cream and apply by brush.
- Work in. Rinse out thoroughly.

*Together. A passion for hair.*

# FIBRE CLINIX AT-HOME REGIMES

Nourish, protect and seal hair with our three heroes & reactivate the in-salon repair results at home with matching ranges dedicated to specific hair needs - for long-lasting repair effects.



## IN-SALON & AT-HOME HEROES



Light Oil  
100ml



Rich Cream-to-Oil  
100ml



Fibre Sealer  
150ml

## AT-HOME

### FIBRE CLINIX FORTIFY

For highly damaged and over-processed hair



Shampoo  
300ml



Conditioner  
250ml



Treatment  
250ml



Multi-Repair Spray  
200ml

### FIBRE CLINIX VIBRANCY

For coloured hair



Shampoo  
300ml



Conditioner  
250ml



Treatment  
250ml



Spray Conditioner  
200ml

### FIBRE CLINIX HYDRATE

For dry and brittle hair



Shampoo  
300ml



Conditioner  
250ml



Treatment  
250ml



Spray Conditioner  
200ml

### FIBRE CLINIX DE-FRIZZ

For coarse and unmanageable hair



Shampoo  
300ml

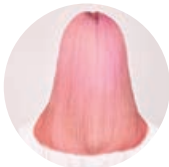


Treatment  
250ml

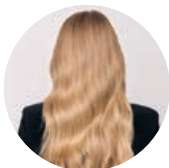


Smoothing Spray  
200ml

## EXAMPLE SCENARIO



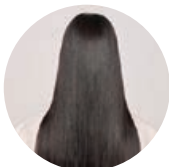
Hair is coarse, damaged or over-processed and in need of strengthening and repair. **The client is concerned about hair manageability & smoothness.**



Hair is fine and slightly porous. Regularly coloured blonde and highlighted. **The client seeks quick fix.**



Hair is medium texture, curly with a demi-permanent colour. **The client wishes primarily additional shine & softness.**



Hair tends to be overburdened, coloured with a demi-permanent colour. **The client is concerned about frizz.**

## HOME CARE RECOMMENDATION



Vibrancy Shampoo



Vibrancy Conditioner



Fortify Multi-Repair Spray



Fibre Sealer



Fortify Shampoo



Fortify Conditioner



Light Oil



Hydrate Shampoo



Hydrate Treatment



De-Frizz Smoothing Spray



Rich Cream-to-Oil



De-Frizz Shampoo



De-Frizz Treatment



De-Frizz Smoothing Spray

*Together. A passion for hair.*