

TECHNICAL BOOKLET



BLO
ND
ME



FOR EVERY YOU.

BLONDME COLOUR ASSORTMENT



	PREMIUM LIGHTENER 9+	CLAY LIGHTENER
	<ul style="list-style-type: none">Improved formula with up to 9 levels of liftFormulated with Swell-Control-Technology, ensuring precise and controlled lightening resultsSuitable for all techniques and hair bases	<ul style="list-style-type: none">Improved performance with up to 8 levels of liftSpreads easily and provides optimal precision with a unique Soft-to-Solid formula – no need for foilsIdeal for freehand techniques & balayage looks
HAIR BASE	All hair bases	3–8
DEVELOPER	2% 7 Vol.* 6% 20 Vol. 9% 30 Vol.	6% 20 Vol. 9% 30 Vol. 12% 40 Vol.
MIXING RATIO	1:1,5–1:2,5	1:1,5–1:2 (mix with a comb)
DEVELOPMENT TIME	20–45 min.	20–45 min.

	BLEACH & TONE	GLOW TONER	BLONDE LIFTING	LIFT & BLEND
	<ul style="list-style-type: none">Lightener additive for lightening and toning in one stepUsed in combination with all BLONDME LightenersNeutralises warm undertones during the lightening process, adding lasting tone directions	<ul style="list-style-type: none">Truly acidic, demi-permanent toning range for intense shine and healthy glow from withinGentle formula for all types of pre-lightened hair – no lift & no damageFast yet premium colour results in only 10 minutes	<ul style="list-style-type: none">Highlift range with up to 5 levels of liftSpecially designed to lift and tone and/or neutralise in one stepFor natural hair bases with up to 30% white hair	<ul style="list-style-type: none">Highlift range for mature blondes with up to 4 levels of liftOptimal combination of lifting and up to 100% white blendingFor natural hair bases with 30–70% white hair
	1–7	7–10** (pre-lightened hair)	6–9	6–9
	2% 7 Vol.* 6% 20 Vol. 9% 30 Vol. 12% 40 Vol.	Premium Developer 2% 7 Vol. (ideal for brush applications) Premium Gel Developer 2% 7 Vol. (ideal for bottle applications)	9% 30 Vol. 12% 40 Vol.	9% 30 Vol. 12% 40 Vol.
	Please see IFU for detailed mixing ratios	1:1	1:2	1:1
	20–45 min.	10 min. (allow visual control)	30–45 min.	30–45 min.

- B – VIOLET ADDITIVE
- B – ASH ADDITIVE
- B – MATT ADDITIVE

- PEARL GLAZE 10-01
- ICE 10-1
- FROSTY GOLD 10-51
- SAND 9,5-41
- APRICOT BLUSH 9,5-74
- STRAWBERRY 9,5-81
- LAVENDER 9,5-91
- ICE-IRISÉ 9-19
- STEEL 9-21
- BISCUIT 9-49
- SOFT GOLD 9-54
- ICED CAPPUCCINO 8-14
- HAZELNUT 8-46
- GLOSSED CEDAR 7-01
- CLEAR

- L-ICE 12-1
- L-ICE-IRISÉ 12-19
- L-STEEL BLUE 12-21
- L-ASH 12-22
- L-SAND 12-4

- LB-ICE 11-10
- LB-ICE-IRISÉ 11-190
- LB-ASH 11-20
- LB-SAND 11-40
- LB-BISCUIT 11-490



Integrated Anti-Metal Bond Protection Technology, powered by Schwarzkopf Bonding, protects the hair bonds during processing for minimised hair breakage. No bonding additives or anti-metal treatments needed!

* BLONDME Premium Gel Developer is not recommended to use with BLONDME Lighteners.
** Depending on the selected Glow Toner shade.



Finishing

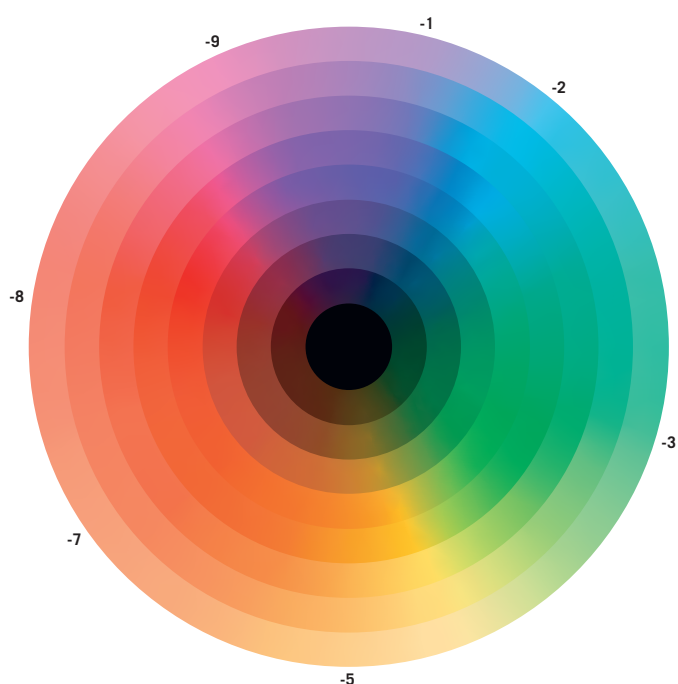
For best results, finish every BLONDME Colour or Lightening Service with BLONDME Care.

THE COLOUR WHEEL AND UNDERLYING PIGMENTS



SCHWARZKOPF NUMBERING SYSTEM

COLOUR WHEEL



LEVEL OF DEPTH



- 10- Ultra Blonde
- 9- Extra Light Blonde
- 8- Light Blonde
- 7- Medium Blonde
- 6- Dark Blonde
- 5- Light Brown
- 4- Medium Brown
- 3- Dark Brown
- 1- Black

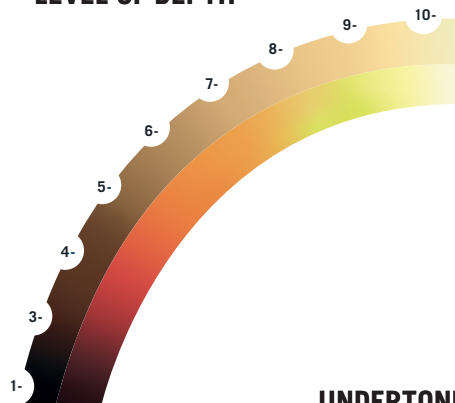
STONE DIRECTION

- 0 Natural
- 1 Cendré
- 2 Ash
- 3 Matt
- 4 Beige
- 5 Gold
- 6 Chocolate
- 7 Copper
- 8 Red
- 9 Violet

Scan to read
the complete
BLONDME
Instructions
for Use:



LEVEL OF DEPTH



UNDERTONE

FOR EVERY YOU.