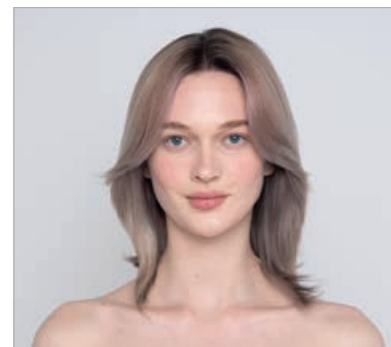
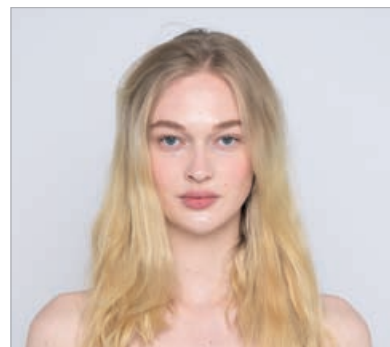
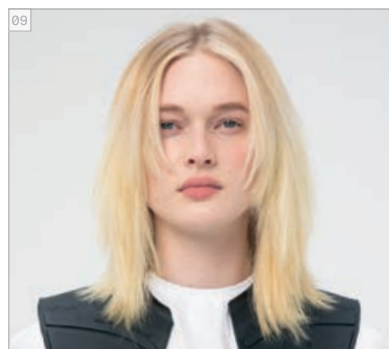
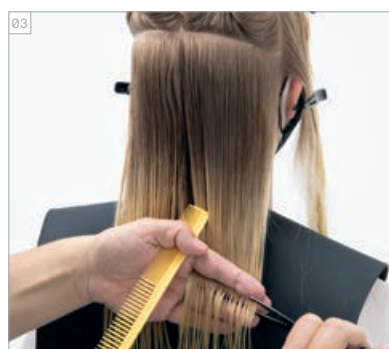
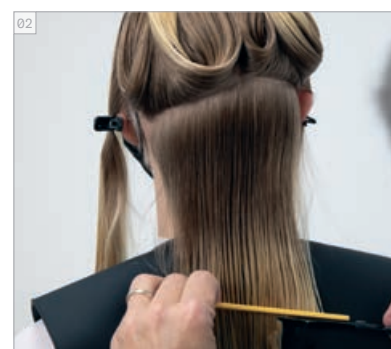
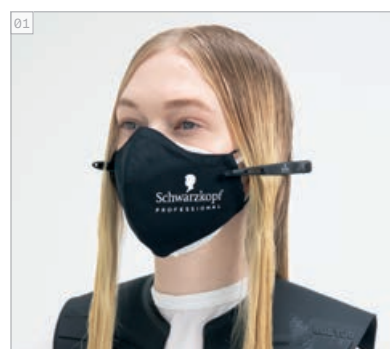


# QUINTESSENTIAL SALON

AVANT // APRÈS  
PRIMA // DOPO



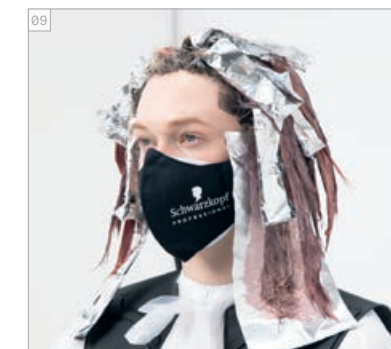
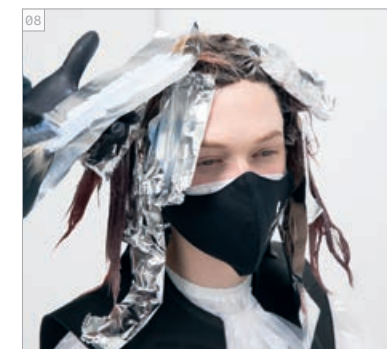
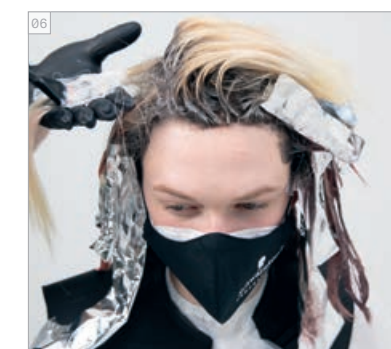
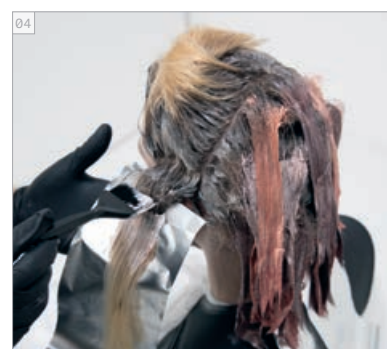
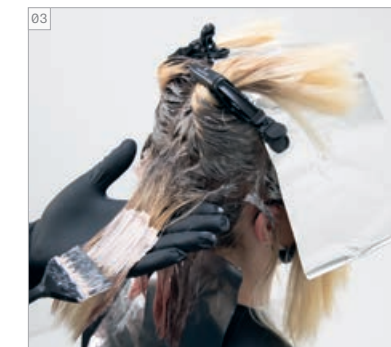
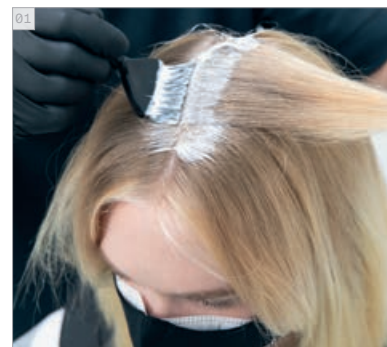
COUPE ÉTAPE PAR ÉTAPE  
TAGLIO STEP BY STEP



PRODUITS UTILISÉS  
PRODOTTI UTILIZZATI



COULEUR ÉTAPE PAR ÉTAPE  
COLORE STEP BY STEP



**CRÈMES DE COLORATION UTILISÉES**

- COULEUR 1 - IGORA ROYAL 8-11 + 6-99 (10:1) + RÉVÉLATEUR ENRICHÉ EN HUILE IGORA ROYAL 3% | 10 VOL.
- COULEUR 2 - IGORA ROYAL 9-1 + 6-88 + PASTELISEUR (30:2:10) + RÉVÉLATEUR ENRICHÉ EN HUILE IGORA ROYAL 3% | 10 VOL.
- COULEUR 3 - IGORA VARIO BLOND PLUS + RÉVÉLATEUR ENRICHÉ EN HUILE IGORA ROYAL 3% | 10 VOL.

**SOINS UTILISÉS**

- FIBRE CLINIX SHAMPOOING TRIBOND
- FIBRE CLINIX MASQUE TRIBOND POUR CHEVEUX FINS
- FIBRE CLINIX BOOSTER DE RÉPARATION
- + FIBRE CLINIX BOOSTER DE COULEUR

**COIFFANTS UTILISÉS**

- OSiS+ GRIP
- OSiS+ DUST IT
- OSiS+ SESSION

**NUANCE UTILIZZATE**

- COLORE 1 - IGORA ROYAL 8-11 + 6-99 (10:1) + IGORA ROYAL OIL DEVELOPER 3% | 10 VOL.
- COLORE 2 - IGORA ROYAL 9-1 + 6-88 + PASTELFIER (30:2:10) + IGORA ROYAL OIL DEVELOPER 3% | 10 VOL.
- COLORE 3 - IGORA VARIO BLOND PLUS + IGORA ROYAL OIL DEVELOPER 3% | 10 VOL.

**PRODOTTI CARE**

- FIBRE CLINIX TRIBOND SHAMPOO
- FIBRE CLINIX TRIBOND TREATMENT PER CAPELLI FINI
- FIBRE CLINIX FORTIFY BOOSTER
- + FIBRE CLINIX VIBRANCY BOOSTER

**PRODOTTI STYLING**

- OSiS+ GRIP
- OSiS+ DUST IT
- OSiS+ SESSION

**MÉLANGES IGORA ROYAL INSPIRÉS PAR PANTONE**

**PANTONE** 18-1649 Deep Sea Coral

**PANTONE** 18-1405 Flint

IGORA ROYAL MIXES ISPIRATI DA PANTONE

Corail des profondeurs Silix