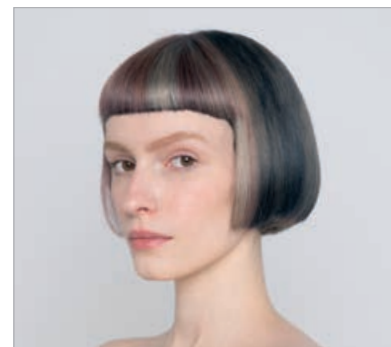
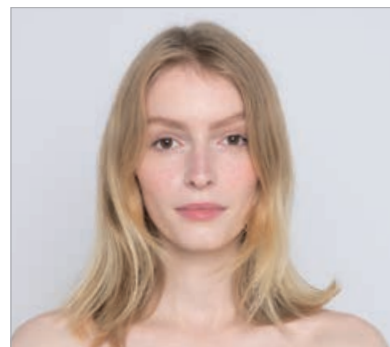
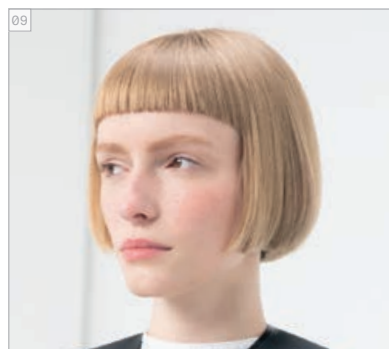
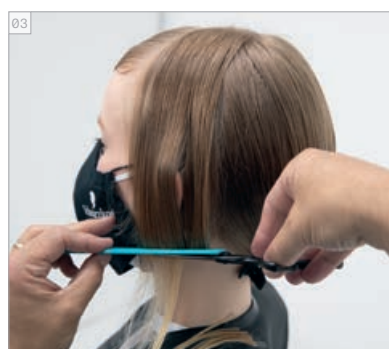
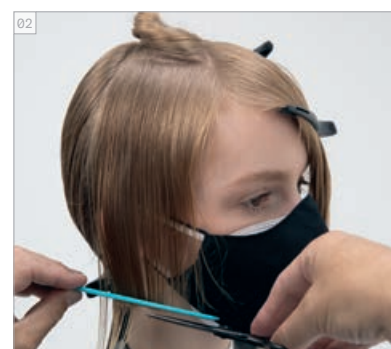


QUINTESSENTIAL CATWALK

AVANT // APRÈS
PRIMA // DOPO



COUPE ÉTAPE PAR ÉTAPE
TAGLIO STEP BY STEP



PRODUITS UTILISÉS
PRODOTTI
UTILIZZATI

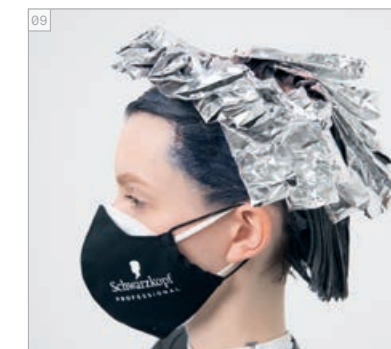
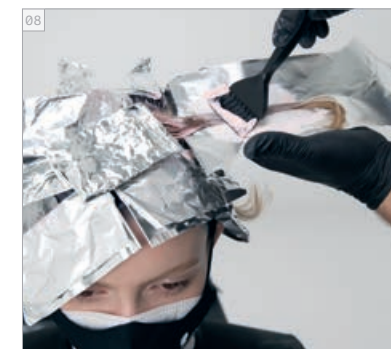
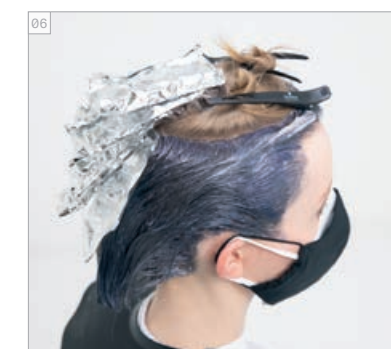
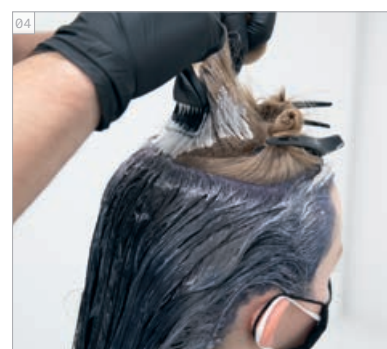
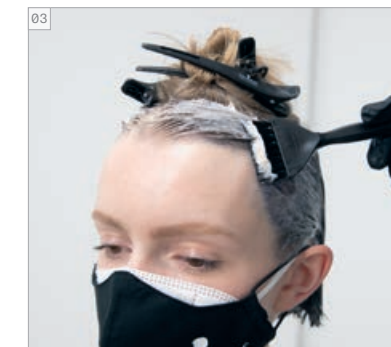


Photographies retouchées

#EssentialLooks

COLOUR TECHNIQUE
#candystripes
by @arjanbevers

COULEUR ÉTAPE PAR ÉTAPE
COLORE STEP BY STEP



CRÈMES DE COLORATION UTILISÉES

COULEUR 1 - IGORA ROYAL 8-19 + 9-24 + 1-1 (10:10:1)
+ RÉVÉLATEUR ENRICHÉ EN HUILE
IGORA ROYAL 3% | 10 VOL.

COULEUR 2 - IGORA ROYAL 9-1 + 0-89 (30:1) + RÉVÉLATEUR
ENRICHÉ EN HUILE IGORA ROYAL 3% | 10 VOL.

COULEUR 3 - IGORA VARIO BLOND PLUS + RÉVÉLATEUR
ENRICHÉ EN HUILE IGORA ROYAL 3% | 10 VOL.

SOINS UTILISÉS

FIBRE CLINIX SHAMPOING TRIBOND
FIBRE CLINIX MASQUE TRIBOND POUR CHEVEUX FINS
FIBRE CLINIX BOOSTER D'HYDRATATION + FIBRE CLINIX
BOOSTER DE COULEUR

COIFFANTS UTILISÉS

OSiS+ HAIRBODY
OSiS+ MAGIC
OSiS+ KEEP IT LIGHT

NUANCE UTILIZZATE

COLORE 1 - IGORA ROYAL 8-19 + 9-24 + 1-1 (10:10:1)
+ IGORA ROYAL OIL DEVELOPER 3% | 10 VOL.

COLORE 2 - IGORA ROYAL 9-1 + 0-89 (30:1)
+ IGORA ROYAL OIL DEVELOPER 3% | 10 VOL.

COLORE 3 - IGORA VARIO BLOND PLUS
+ IGORA ROYAL OIL DEVELOPER 3% | 10 VOL.

PRODOTTI CARE

FIBRE CLINIX TRIBOND SHAMPOO
FIBRE CLINIX TRIBOND TREATMENT PER CAPELLI FINI
FIBRE CLINIX HYDRATE BOOSTER + FIBRE CLINIX
VIBRANCY BOOSTER

PRODOTTI STYLING

OSiS+ HAIRBODY
OSiS+ MAGIC
OSiS+ KEEP IT LIGHT



PANTONE®
16-1710
Digitale

PANTONE®
19-3917
Blackened Pearl

MÉLANGES IGORA ROYAL
INSPIRÉS PAR
PANTONE
IGORA ROYAL
MIXES ISPIRATI DA
PANTONE