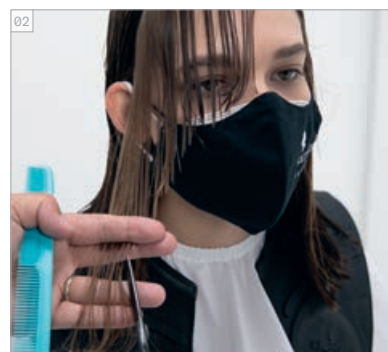
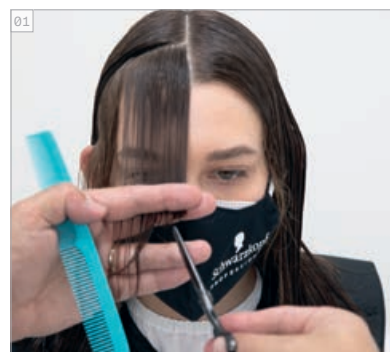


# NOVEL COMFORT SALON

AVANT // APRÈS  
PRIMA // DOPO



COUPE ÉTAPE PAR ÉTAPE  
TAGLIO STEP BY STEP



PRODUITS UTILISÉS  
PRODOTTI  
UTILIZZATI

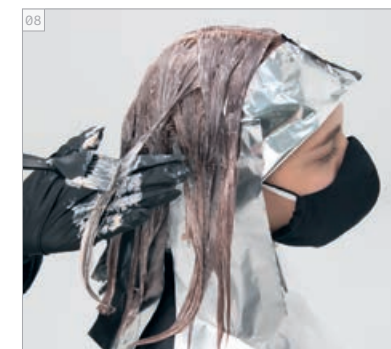
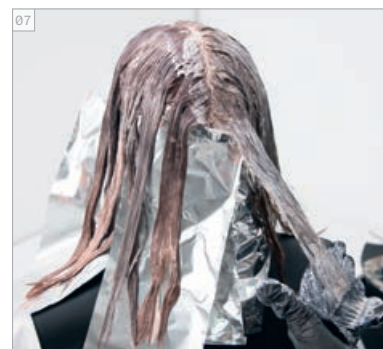
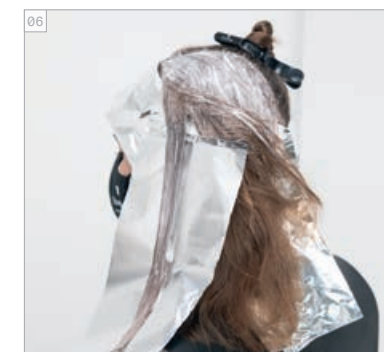
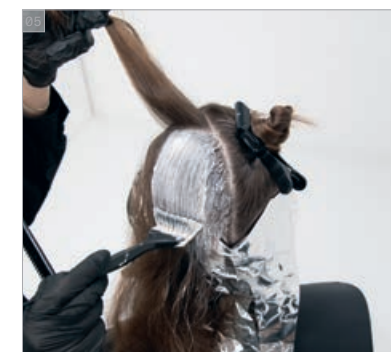
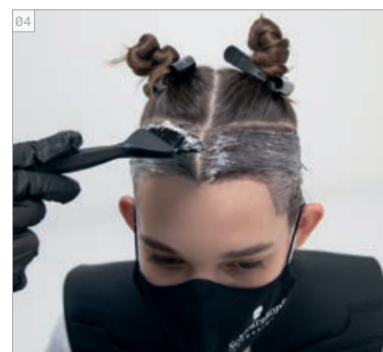
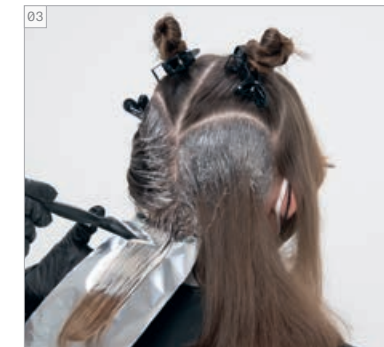
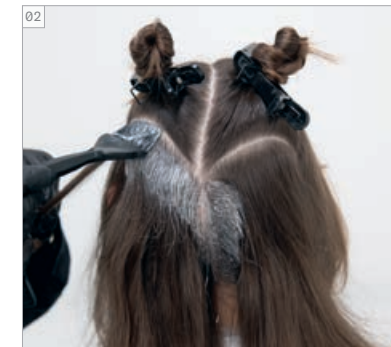
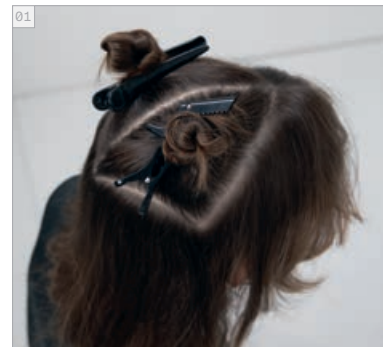


Photographies retouchées

## #EssentialLooks

COLOUR TECHNIQUE  
#blushblurring  
by @lesleyjennison

COULEUR ÉTAPE PAR ÉTAPE  
COLORE STEP BY STEP



**CRÈMES DE COLORATION UTILISÉES**

- COULEUR 1 - IGORA ROYAL 6-46 + 3-68 (5:1) + RÉVÉLATEUR ENRICHÉ EN HUILE IGORA ROYAL 3% | 10 VOL.
- COULEUR 2 - IGORA ROYAL 4-68 + PASTELISSEUR (2:1) + RÉVÉLATEUR ENRICHÉ EN HUILE IGORA ROYAL 6% | 20 VOL.
- COULEUR 3 - IGORA ROYAL 9-4 + 8-84 (1:3) + RÉVÉLATEUR ENRICHÉ EN HUILE IGORA ROYAL 6% | 20 VOL.

**SOINS UTILISÉS**

- FIBRE CLINIX SHAMPOOING TRIBOND
- FIBRE CLINIX MASQUE TRIBOND POUR CHEVEUX FINS
- FIBRE CLINIX BOOSTER DE COULEUR + FIBRE CLINIX BOOSTER DE VOLUME

**COIFFANTS UTILISÉS**

- OSiS+ CURL HONEY
- OSiS+ KEEP IT LIGHT

**NUANCE UTILIZZATE**

- COLORE 1 - IGORA ROYAL 6-46 + 3-68 (5:1) + IGORA ROYAL OIL DEVELOPER 3% | 10 VOL.
- COLORE 2 - IGORA ROYAL 4-68 + PASTELFIER (2:1) + IGORA ROYAL OIL DEVELOPER 6% | 20 VOL.
- COLORE 3 - IGORA ROYAL 9-4 + 8-84 (1:3) + IGORA ROYAL OIL DEVELOPER 6% | 20 VOL.

**PRODOTTI CARE**

- FIBRE CLINIX TRIBOND SHAMPOO
- FIBRE CLINIX TRIBOND TREATMENT PER CAPELLI FINI
- FIBRE CLINIX VIBRANCY BOOSTER + FIBRE CLINIX VOLUMIZE BOOSTER

**PRODOTTI STYLING**

- OSiS+ CURL HONEY
- OSiS+ KEEP IT LIGHT



**MÉLANGES IGORA ROYAL  
INSPIRÉS PAR  
PANTONE**  
IGORA ROYAL  
MIXES ISPIRATI DA  
PANTONE

Châtain Cuivré    Chocolat Chaud    Châtain Urbain