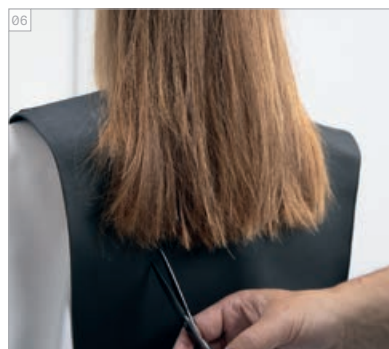
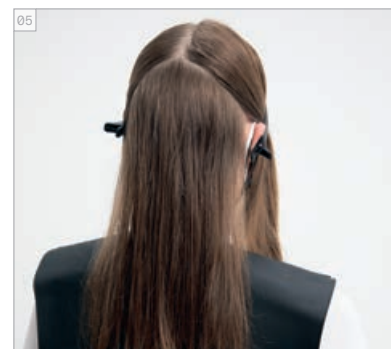
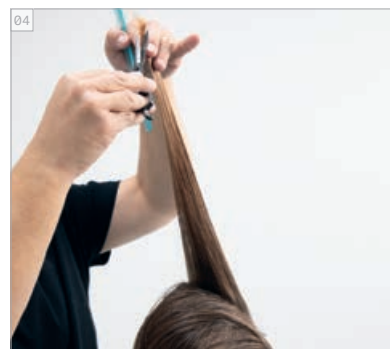
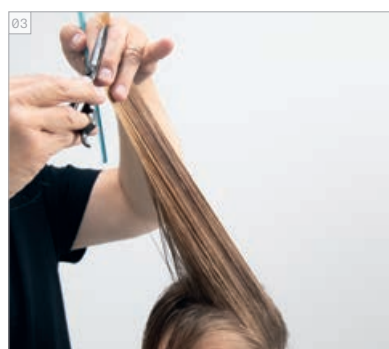
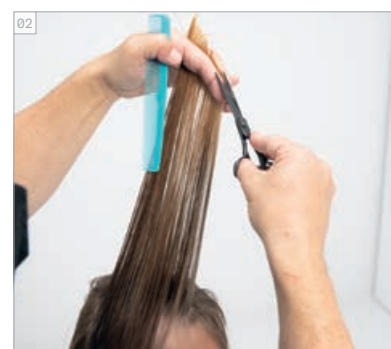


NOVEL COMFORT CATWALK

AVANT // APRÈS
PRIMA // DOPO



COUPE ÉTAPE PAR ÉTAPE
TAGLIO STEP BY STEP



PRODUITS UTILISÉS
PRODOTTI UTILIZZATI



Photographies retouchées

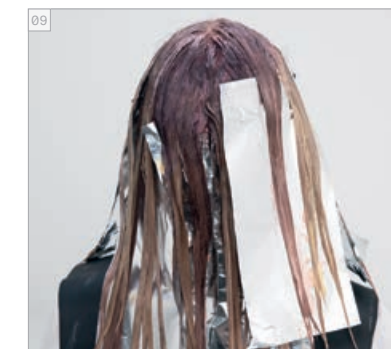
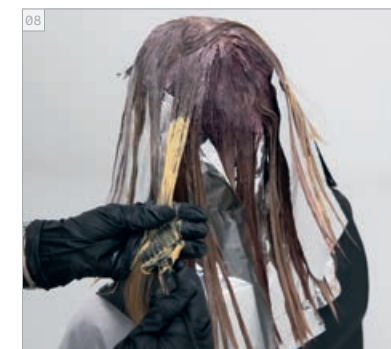
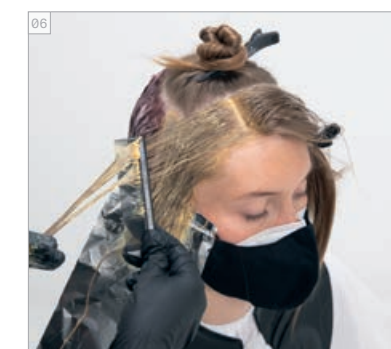
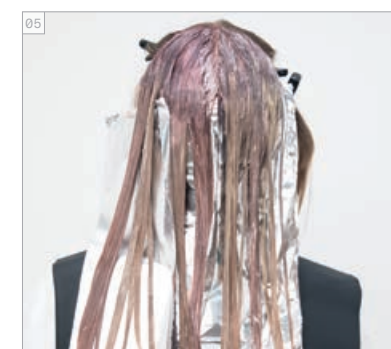
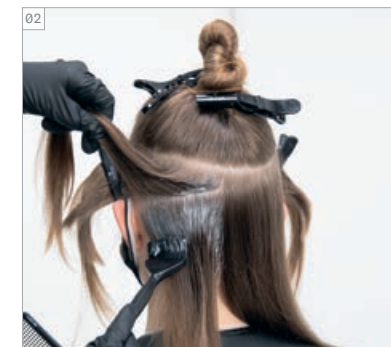
#EssentialLooks

COLOUR TECHNIQUE

#blushblurring

by @lesleyjennison

COULEUR ÉTAPE PAR ÉTAPE
COLORE STEP BY STEP



CRÈMES DE COLORATION UTILISÉES

- COULEUR 1 - IGORA ROYAL 8-65 + 9-98 (35:1) + RÉVÉLATEUR ENRICHÉ EN HUILE IGORA ROYAL 3% | 10 VOL.
- COULEUR 2 - IGORA ROYAL 9-4 + 8-84 (1:3) + RÉVÉLATEUR ENRICHÉ EN HUILE IGORA ROYAL 6% | 20 VOL.
- COULEUR 3 - IGORA ROYAL 9-55 + 9-7 (1:1) + RÉVÉLATEUR ENRICHÉ EN HUILE IGORA ROYAL 3% | 10 VOL.
- COULEUR 4 - IGORA ROYAL 9-55 + 9-7 (1:1) + RÉVÉLATEUR ENRICHÉ EN HUILE IGORA ROYAL 9% | 30 VOL.

SOINS UTILISÉS

- FIBRE CLINIX SHAMPOOING TRIBOND
- FIBRE CLINIX MASQUE TRIBOND POUR CHEVEUX FINS
- FIBRE CLINIX BOOSTER DE COULEUR + FIBRE CLINIX BOOSTER D'HYDRATATION

COIFFANTS UTILISÉS

- OSIS+ GRIP // OSIS+ SESSION //
- OSIS+ KEEP IT LIGHT

NUANCE UTILIZZATE

- COLORE 1 - IGORA ROYAL 8-65 + 9-98 (35:1) + IGORA ROYAL OIL DEVELOPER 3% | 10 VOL.
- COLORE 2 - IGORA ROYAL 9-4 + 8-84 (1:3) + IGORA ROYAL OIL DEVELOPER 6% | 20 VOL.
- COLORE 3 - IGORA ROYAL 9-55 + 9-7 (1:1) + IGORA ROYAL OIL DEVELOPER 3% | 10 VOL.
- COLORE 4 - IGORA ROYAL 9-55 + 9-7 (1:1) + IGORA ROYAL OIL DEVELOPER 9% | 30 VOL.

PRODOTTI CARE

- FIBRE CLINIX TRIBOND SHAMPOO
- FIBRE CLINIX TRIBOND TREATMENT PER CAPELLI FINI
- FIBRE CLINIX VIBRANCY BOOSTER + FIBRE CLINIX HYDRATE BOOSTER

PRODOTTI STYLING

- OSIS+ GRIP // OSIS+ SESSION //
- OSIS+ KEEP IT LIGHT



MÉLANGES IGORA ROYAL
INSPIRÉS PAR
PANTONE
IGORA ROYAL
MIXES ISPIRATI DA
PANTONE

Nectar d'Abricot Châtain Cuivré Sirop d'Érable