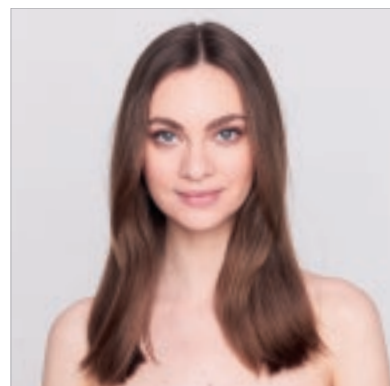


# ONCE UPON A TIME Salon

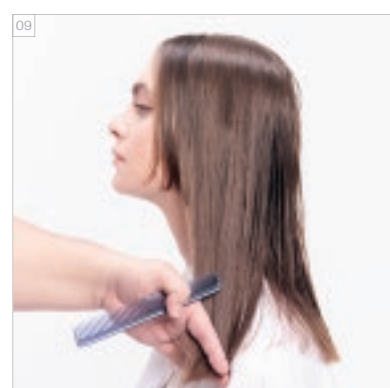
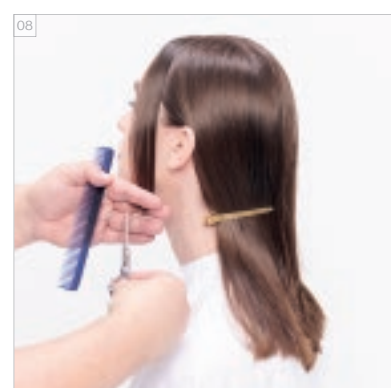
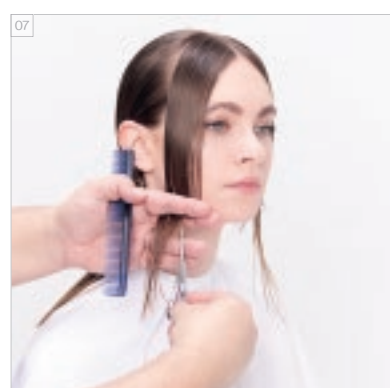
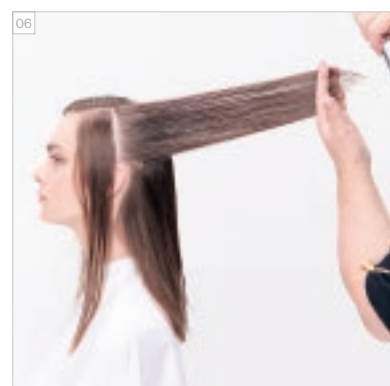
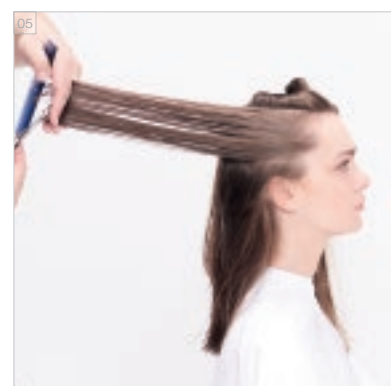
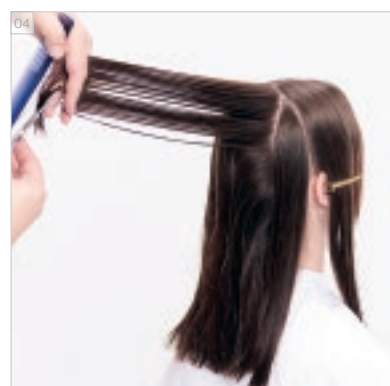
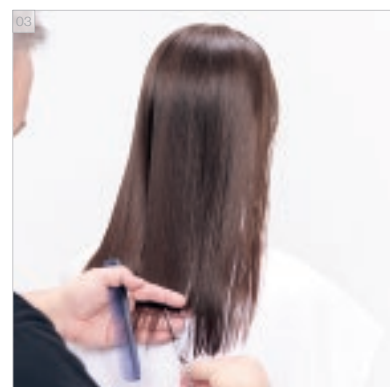
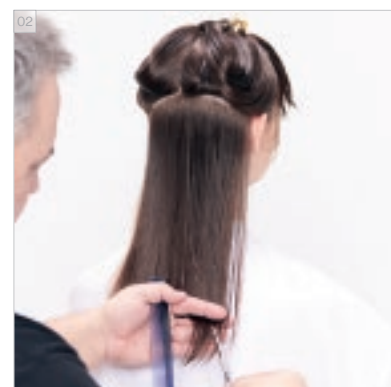
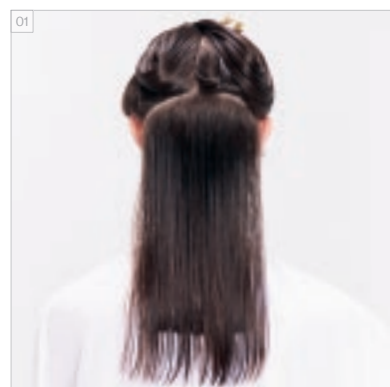
BEFORE // AFTER  
VORHER // NACHHER



For more information and to get inspired watch our Essential Looks Trendreport: [www.essentiallooks.com/2020-2](http://www.essentiallooks.com/2020-2)

Weitere Informationen und Inspiration erhältst du in unserem Essential Looks-Trendreport: [www.essentiallooks.com/2020-2](http://www.essentiallooks.com/2020-2)

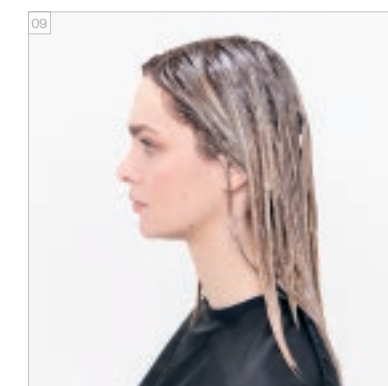
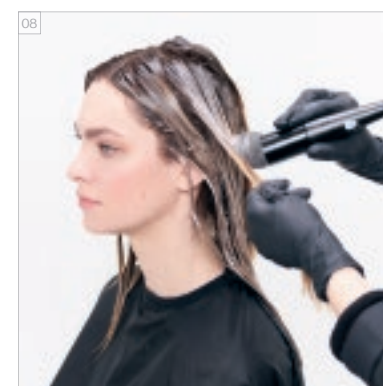
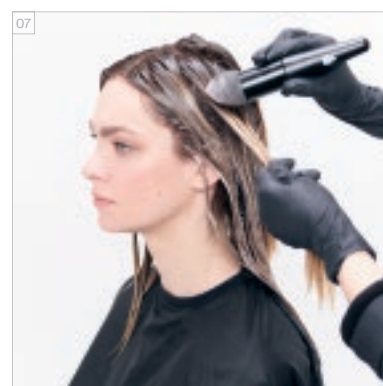
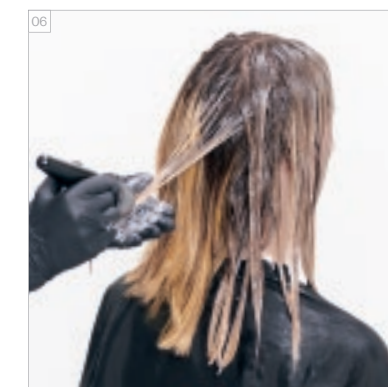
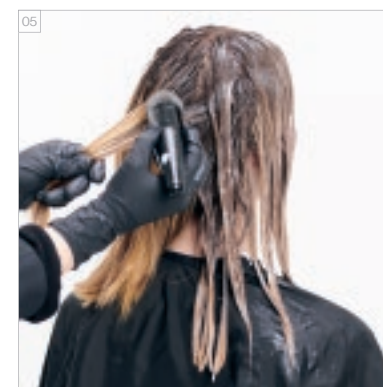
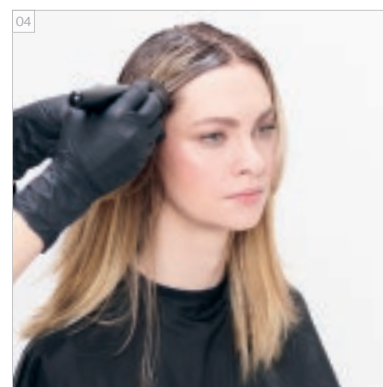
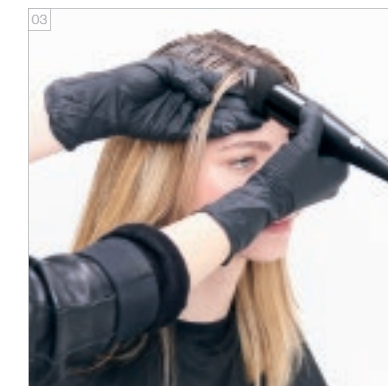
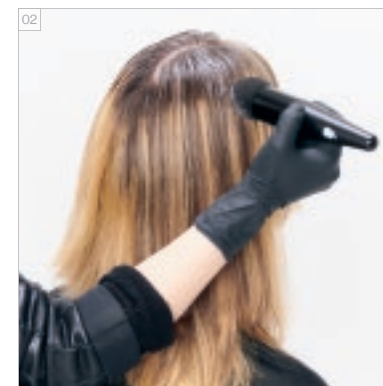
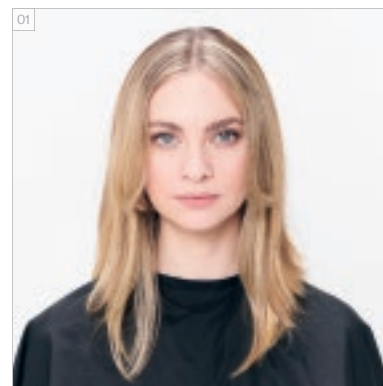
CUT STEP BY STEPS  
STEP BY STEP - SCHNITT



## #EssentialLooks

COLOUR TECHNIQUE  
#dualblending  
by @rossajurenas

COLOUR STEP BY STEPS  
STEP BY STEP - FARBE



### COLOURS USED

FREEHAND PAINTING: BLONDME BOND ENFORCING PREMIUM CLAY LIGHTENER + BLONDME PREMIUM DEVELOPER 12%/40 VOL. (1:1,5)  
 COLOUR 1 - ROOTS ALL OVER: BLONDME BOND ENFORCING BLONDE TONING NOUGAT + BLONDME PREMIUM DEVELOPER 2%/7 VOL. (1:1)  
 COLOUR 2 - ALTERNATE MID-LENGTHS & ENDS: BLONDME BOND ENFORCING BLONDE TONING BISCUIT + ICE IRISÉ (2:1)  
 + BLONDME PREMIUM DEVELOPER 2%/7 VOL. (1:1)  
 COLOUR 3 - BLONDME BOND ENFORCING BLONDE TONING ICE + SAND (1:1) + BLONDME PREMIUM DEVELOPER 2%/7 VOL. (1:1)  
 BLONDME KERATIN RESTORE BONDING SHAMPOO // BLONDME KERATIN RESTORE BONDING MASK // BLONDME SHINE ELIXIR

### VERWENDETE FARBEN

FREEHAND PAINTING: BLONDME BOND ENFORCING PREMIUM CLAY LIGHTENER + BLONDME PREMIUM DEVELOPER 12%/40 VOL. (1:1,5)  
 FARBE 1 - GESAMTER ANSATZ: BLONDME BOND ENFORCING BLONDE TONING NOUGAT + BLONDME PREMIUM DEVELOPER 2% (1:1)  
 FARBE 2 - ABWECHSELND IN LÄNGEN UND SPITZEN: BLONDME BOND ENFORCING BLONDE TONING BISCUIT + EIS-IRISÉ (2:1) + BLONDME PREMIUM DEVELOPER 2% (1:1)  
 FARBE 3 - BLONDME BOND ENFORCING BLONDE TONING EIS + SAND (1:1) + BLONDME PREMIUM DEVELOPER 2% (1:1)  
 BLONDME KERATIN RESTORE BONDING SHAMPOO  
 BLONDME KERATIN RESTORE BONDING MASK // BLONDME SHINE ELIXIR

