



# High Quality Equipment System Solutions

From standard manual dispensing and curing equipment up to advanced application robots.



## Content

## Product

### INTEGRATED DISPENSE SYSTEMS FOR MANUAL DISPENSING FROM BOTTLES

- > LOCTITE 98414 Peristaltic Handgun
- > LOCTITE 97001 Peristaltic Handgun
- > LOCTITE 98810 CA Volumetric Hand Pump
- > LOCTITE 97009 Integrated Semi-Automatic Dispensing System
- > LOCTITE 97130 ErgoLoc Valve
- > LOCTITE 98548 Benchtop Peristaltic Dispenser

### DISPENSE SYSTEMS FOR AUTOMATIC DISPENSING FROM BOTTLES

- > LOCTITE 97152 Dual Channel Controller
- > LOCTITE 97108 2.0 l Reservoir
- > LOCTITE 97115 Rotorspray
- > LOCTITE 97135 Diaphragm Dispense Valve
- > LOCTITE 97113 Stationary Dispense Valve
- > LOCTITE 98013 Cyanoacrylate Dispensing Valve
- > LOCTITE 98009 Light Cure Dispensing Valve

### PRECISION DISPENSE SYSTEMS FOR VOLUMETRIC DISPENSING FROM BOTTLES

- > LOCTITE EQ RC15 Compact Rotor Pump Controller
- > LOCTITE 97621 Volumetric Rotor Pump 1.0
- > LOCTITE 97611 Volumetric Rotor Pump 4.0
- > LOCTITE EQ VA20 Volumetric Dispense Valve

### SYRINGE AND CARTRIDGE DISPENSE SYSTEMS

- > LOCTITE 142240 Manual Handgun
- > LOCTITE 97002 Pneumatic Handgun
- > LOCTITE 98666 All Purpose Syringe Dispensing System
- > LOCTITE 97006 Precision Syringe Dispensing System

### BENCHTOP ROBOTS

- > LOCTITE EQ RB40 200D Benchtop Robot
- > LOCTITE EQ RB40 300D Benchtop Robot
- > LOCTITE EQ RB40 400D Benchtop Robot
- > LOCTITE EQ RB40 500D Benchtop Robot

### 2-PART DISPENSING SYSTEMS

- > LOCTITE 96001 Dual Cartridge Handgun
- > LOCTITE 97042 Pneumatic Dual Cartridge Handgun
- > LOCTITE 983438 Manual Dual Cartridge Handgun
- > LOCTITE 983439 Pneumatic Dual Cartridge Handgun
- > LOCTITE EQ MM10 50 ml Dual Cartridge Dispenser
- > LOCTITE 97160 Dual Rotor Pump Controller
- > LOCTITE EQ MM25 Dual Rotor Pump
- > LOCTITE EQ MM30 Dual Cartridge Pusher

### LIGHT CURE SYSTEMS

- > LOCTITE EQ CL25 LED Spot Cure Controller and Accessories
- > LOCTITE EQ CL32 LED Spot 365 nm/405 nm
- > LOCTITE 97055 UVALOC 1000
- > LOCTITE EQ CL30 LED Flood Cure System
- > LOCTITE 97360 LED Flood Chamber

### DISPENSE NEEDLES, MIXERS AND ACCESSORIES

- > Flexible Dispensing Tips
- > Tapered Dispensing Tips
- > High Precision Dispensing Tips
- > Additional Dispensing Tips and Mixer Nozzles

				Page
				4 – 5
				6 – 7
				8 – 9
				10 – 11
				12 – 13
				14 – 15
				16 – 17
				18 – 19

**INTEGRATED DISPENSE SYSTEMS FOR MANUAL DISPENSING FROM BOTTLES**

Product Name		
<p><b>LOCTITE 98414 Peristaltic Handgun</b></p>		<p>LOCTITE 98414 Peristaltic Handgun is a manual, peristaltic, volumetric bottle-top hand pump applicator.</p>
<p><b>LOCTITE 97001 Peristaltic Handgun</b></p>		<p>LOCTITE 97001 Peristaltic Handgun is a manual, peristaltic, volumetric bottle-top hand pump applicator.</p>
<p><b>LOCTITE 98810 CA Volumetric Hand Pump</b></p>		<p>LOCTITE 98810 CA Volumetric Hand Pump is a manual, peristaltic, bottle top dispenser designed to suit instant adhesives.</p>
<p><b>LOCTITE 97009 Integrated Semi-Automatic Dispensing System</b></p>		<p>LOCTITE 97009 Integrated Semi-Automatic Dispensing System to dispense the adhesive directly from larger bottles. The controller provides digital timing control for any LOCTITE automatic dispense valve or automatic hand-held applicator. It is equipped with a precision pressure regulator, with a range of 0.1–4 bar for reliable dispensing, eliminating air pressure fluctuations.</p>
<p><b>LOCTITE 97130 ErgoLoc Valve</b></p>		<p>LOCTITE 97130 ErgoLoc Valve is a pneumatically operated dispense valve, designed to be used in conjunction with pressure-time dispense systems.</p>
<p><b>LOCTITE 98548 Benchtop Peristaltic Dispenser</b></p>		<p>LOCTITE 98548 Benchtop Peristaltic Dispenser is ideal for dispensing adhesives from bottles. The peristaltic motion of the rotor provides volumetric dispensing of the material directly from a bottle or similar container.</p>



Application	Benefits	Order No.
Anaerobic adhesives in 50 ml bottles for viscosities up to approx. 2,500 mPas.	<ul style="list-style-type: none"> <li>› Ideal for accurate drop dispensing therefore improves quality and reduces waste</li> <li>› Ensures no leakage, regardless of the orientation of the bottle</li> <li>› Requires no flushing, power or air source</li> </ul>	608966
Anaerobic adhesives in 250 ml bottles for viscosities up to approx. 2,500 mPas.	<ul style="list-style-type: none"> <li>› Ideal for accurate drop dispensing therefore improves quality and reduces waste</li> <li>› Ensures no leakage, regardless of the orientation of the bottle</li> <li>› Requires no flushing, power or air source</li> </ul>	88631
Instant adhesives in 20 g bottles.	<ul style="list-style-type: none"> <li>› Precision dispensing of instant adhesives in smallest bottles</li> <li>› Multiple pre-set dispense settings for repeatable drop sizes</li> <li>› Lightweight and ergonomic design</li> <li>› Accepts a variety of dispense nozzles</li> </ul>	1506477
Anaerobic, instant and light cure adhesives in 250 ml and 500 g bottles.	<ul style="list-style-type: none"> <li>› Integrated design (controller and reservoir) for simple set-up and space economy</li> <li>› Timer-controlled solenoid valve for air-actuated applicator</li> <li>› Level sensor to give empty warning</li> <li>› Capable of operating in a continuous mode for bead dispensing applications</li> </ul>	215845
Anaerobic and instant adhesives with viscosities up to 10,000 mPas.	<ul style="list-style-type: none"> <li>› Forward closing avoids air entrapment and potential premature curing of cyanoacrylates</li> <li>› Dispenses repeatable drop sizes down to 0.005 g</li> <li>› Stroke adjustment for fine-tuning dispense characteristics</li> <li>› Slim ergonomic design greatly reduces hand fatigue</li> </ul>	444643
Anaerobic, instant and light cure adhesives in 10 ml, 20 g and 30 ml packs. Solvent-free activators and oils up to a viscosity of approx. 5,000 mPas.	<ul style="list-style-type: none"> <li>› Continuous or time mode of dispense with high accuracy</li> <li>› Includes four different feed line tubing sizes to accommodate various product viscosities</li> <li>› No decanting of adhesive required</li> <li>› Simple and convenient load mechanism for easy cleaning</li> <li>› Requires no use of an air source</li> </ul>	769914

## DISPENSE SYSTEMS FOR AUTOMATIC DISPENSING FROM BOTTLES

Product Name		
<p><b>LOCTITE 97152 Dual Channel Controller</b></p>		<p>LOCTITE 97152 Dual Channel Controller is a versatile multi-functional controller for actuating 1 – 2 dispensing valves. Settings can be made via the membrane keypad and the rotary selector switch. Reservoir pressure is controlled via a precision pressure regulator and monitored electronically.</p>
<p><b>LOCTITE 97108 2.0 I Reservoir</b></p>		<p>LOCTITE 97108 2.0 I Reservoir accommodates LOCTITE bottles and is equipped with a pneumatic connection and an electrical interface for setup with all LOCTITE controllers.</p>
<p><b>LOCTITE 97115 Rotorspray</b></p>		<p>LOCTITE 97115 Rotorspray is used to apply LOCTITE products to the interior cylindrical surfaces of work pieces.</p>
<p><b>LOCTITE 97135 Diaphragm Dispense Valve</b></p>		<p>LOCTITE 97135 Diaphragm Dispense Valve is a pneumatically actuated dispense valve which is designed for use in conjunction with pressure-time dispense systems. The opening of the diaphragm takes place by pressurising the internal single acting cylinder. Closure is achieved by spring force between cycles.</p>
<p><b>LOCTITE 97113 Stationary Dispense Valve</b></p>		<p>LOCTITE 97113 Stationary Dispense Valve with 1/4 inch feed line is designed for pressure-time applications. It is modular in design and comprises of a product shut-off valve and valve actuator, providing quick on-line serviceability.</p>
<p><b>LOCTITE 98013 Cyanoacrylate Dispensing Valve</b></p>		<p>LOCTITE 98013 Cyanoacrylate Dispensing Valve is a normally-closed diaphragm valve that provides high-resolution stroke adjustment and results in consistent flow control. This valve is specifically designed for cyanoacrylate (instant adhesive) dispensing.</p>
<p><b>LOCTITE 98009 Light Cure Dispensing Valve</b></p>		<p>LOCTITE 98009 Light Cure Dispensing Valve is a normally-closed diaphragm valve that provides high-resolution stroke adjustment and results in consistent flow control. This valve is mainly used for light cure adhesive dispensing.</p>

Application	Benefits	Order No.
Depends on the supplementary equipment.	<ul style="list-style-type: none"> <li>&gt; 1–2 independent dispensing channels</li> <li>&gt; Integrated solenoid valve module</li> <li>&gt; High precision pressure regulator</li> <li>&gt; PLC interface</li> <li>&gt; Graphic display for easy menu navigation</li> <li>&gt; Online flow monitor signal evaluation</li> </ul>	1275665
Adhesive bottle sizes 250 ml, 500 g, 1 l and 2 kg.	<ul style="list-style-type: none"> <li>&gt; Operational with semi-automatic and automatic controllers</li> <li>&gt; Low level and empty warning signals (PLC)</li> <li>&gt; Manual dump valve for pressure on/off</li> <li>&gt; Reservoir lid holder to avoid contamination</li> </ul>	135555
Anaerobic adhesives.	<ul style="list-style-type: none"> <li>&gt; Accurate, controlled spray pattern</li> <li>&gt; High speed rotation for large and small rotor disks</li> <li>&gt; Fail to spin alarm</li> </ul>	135557
Anaerobic adhesives with viscosities up to 2,500 mPas.	<ul style="list-style-type: none"> <li>&gt; Fail-safe spring assists closing of valve upon loss of air pressure</li> <li>&gt; Internal components are PTFE to prevent premature curing</li> <li>&gt; Modular design and floating diaphragm allow for easy cleaning</li> </ul>	215846
Anaerobic and light cure adhesives with viscosities up to 10,000 mPas.	<ul style="list-style-type: none"> <li>&gt; Slim, lightweight, seal-less design</li> <li>&gt; Adjustable suck-back feature eliminates stringing and dripping</li> <li>&gt; Can be used in static position, manually or mounted directly to a robot</li> </ul>	88644
Instant adhesives, retaining compounds and threadlockers from low to medium viscosities up to 2,500 mPas.	<ul style="list-style-type: none"> <li>&gt; Bubble-free, no-drip dispensing</li> <li>&gt; Precision adjustment of stroke to control flow</li> <li>&gt; Can be used in static position, manually or mounted directly to a robot</li> </ul>	318654
Light cure adhesives, retaining compounds and threadlockers from low to medium viscosities up to 2,500 mPas.	<ul style="list-style-type: none"> <li>&gt; Bubble-free, no-drip dispensing</li> <li>&gt; Precision adjustment of stroke to control flow</li> <li>&gt; Can be used in static position, manually or mounted directly to a robot</li> </ul>	218280

**PRECISION DISPENSE SYSTEMS FOR VOLUMETRIC DISPENSING FROM BOTTLES****Product Name****LOCTITE EQ RC15  
Compact Rotor  
Pump Controller**

LOCTITE EQ RC15 Compact Rotor Pump Controller provides all control required for both the 97611 and 97621 Compact Rotor Pumps. This controls all the dispensing parameters, such as pump speed, volume dispense, reservoir pressure and rotorspray control (if used).

**LOCTITE 97621  
Volumetric Rotor  
Pump 1.0**

LOCTITE 97621 Volumetric Rotor Pump 1.0 is a precision volumetric rotary displacement dispenser for accurate dispensing applications.

**LOCTITE 97611  
Volumetric Rotor  
Pump 4.0**

LOCTITE 97611 Volumetric Rotor Pump 4.0 is a precision volumetric dispenser for accurate dispensing applications.

**LOCTITE EQ VA20  
Volumetric Dispense  
Valve**

LOCTITE EQ VA20 Volumetric Dispense Valve is a positive displacement metering valve that dispenses a precise drop of adhesive with each cycle.



Application	Benefits	Order No.
Depends on the supplementary equipment.	<ul style="list-style-type: none"> <li>➤ Easy menu navigation allowing users to select either the amount of product dispensed (in ml) or the dispense rate (in ml/min)</li> <li>➤ Designed to interface seamlessly with volumetric rotor pump</li> <li>➤ Touch screen display for ease of use</li> <li>➤ Connects directly to standard LOCTITE reservoirs</li> <li>➤ Useful for all kinds of applications: drops, beads, potting</li> </ul>	1880232
Anaerobic, light cure and acrylic adhesives with volumes from 120 to 1,480 $\mu$ L/min.	<ul style="list-style-type: none"> <li>➤ High repeatability</li> <li>➤ High accuracy + / - 1 % valid up to 10,000 mPas</li> <li>➤ Reversible direction of flow (suck-back) allows for an exact stoppage of the product flow</li> <li>➤ Useful for all kinds of applications: drops, beads, potting</li> </ul>	1741601
Anaerobic, light cure and acrylic adhesives with volumes from 500 to 6,000 $\mu$ L/min.	<ul style="list-style-type: none"> <li>➤ High repeatability</li> <li>➤ High accuracy + / - 1 % valid up to 10,000 mPas</li> <li>➤ Reversible direction of flow (suck-back) allows for an exact stoppage of the product flow</li> <li>➤ Useful for all kinds of applications: drops, beads, potting</li> </ul>	1196160
Light cure adhesives with volumes from 1.5 to 12 $\mu$ L/min.	<ul style="list-style-type: none"> <li>➤ High speed automation up to 180 cycles per minute</li> <li>➤ Easily fed from any LOCTITE reservoir</li> <li>➤ Estimated lifetime &gt;1 million cycles</li> <li>➤ Low maintenance requirement</li> <li>➤ Ideal for needle bonding applications</li> </ul>	2084141

## SYRINGE AND CARTRIDGE DISPENSE SYSTEMS

Product Name		
<p><b>LOCTITE 142240 Manual Handgun</b></p>		<p>LOCTITE 142240 Manual Handgun for plastic and aluminium cartridges.</p>
<p><b>LOCTITE 97002 Pneumatic Handgun</b></p>		<p>LOCTITE 97002 Pneumatic Handgun for plastic and aluminium cartridges.</p>
<p><b>LOCTITE 98666 All Purpose Syringe Dispensing System</b></p>		<p>LOCTITE 98666 All Purpose Syringe Dispensing System is a digital electro-pneumatic dispensing system. The system is delivered ready for operation, including dispensing needles, cartridge adapter, cartridge holder and foot switch.</p>
<p><b>LOCTITE 97006 Precision Syringe Dispensing System</b></p>		<p>LOCTITE 97006 Precision Syringe Dispensing System accurately dispenses adhesives or other fluids. Typical applications are the assembly of medical devices with UV adhesives and many applications directly from syringes.</p>

Application	Benefits	Order No.
Adhesives and sealants in 290 ml, 300 ml and 310 ml cartridges.	<ul style="list-style-type: none"> <li>› Rapid-loading system to make cartridge changes clean and easy</li> <li>› Ergonomically designed</li> <li>› Simple and clean dispensing</li> </ul>	142240
Adhesives and sealants in 290 ml, 300 ml and 310 ml cartridges.	<ul style="list-style-type: none"> <li>› Controlled flow from the cartridge</li> <li>› Integrated pressure regulator</li> <li>› Quick pressure relief to minimise run-on effect</li> <li>› Ergonomically designed</li> <li>› Simple and clean dispensing</li> </ul>	88632
Adhesives and sealants in 10 ml, 30 ml, 55 ml and 300 ml syringes / cartridges from low to high viscosity (5 mPas to paste).	<ul style="list-style-type: none"> <li>› Digital timing control</li> <li>› Compact design to minimise workspace requirement</li> <li>› Vacuum suck back to ensure no drips or run-on</li> <li>› Useful for all kinds of applications: drops, beads, potting</li> </ul>	883976
Adhesives and sealants in 10 ml, 30 ml, 55 ml and 300 ml syringes / cartridges from low to high viscosity (5 mPas to paste).	<ul style="list-style-type: none"> <li>› High precision syringe dispenser for maximum dispense accuracy and control</li> <li>› Digital precision regulator for accurate flow control</li> <li>› Vacuum suck back to ensure no drips or run-on</li> <li>› Useful for all kinds of applications: drops, beads, potting</li> </ul>	88633

## BENCHTOP ROBOTS

Product Name	Parameters	Order No.
<b>LOCTITE EQ RB40 200D Benchtop Robot</b>	<ul style="list-style-type: none"> <li>&gt; 3 axes of movement</li> <li>&gt; 200 mm x 200 mm x 50 mm range of operation</li> <li>&gt; Accurate to within +/- 0.01 mm</li> </ul>	2104801
<b>LOCTITE EQ RB40 300D Benchtop Robot</b>	<ul style="list-style-type: none"> <li>&gt; 3 axes of movement</li> <li>&gt; 300 mm x 300 mm x 100 mm range of operation</li> <li>&gt; Accurate to within +/- 0.01 mm</li> </ul>	2104799
<b>LOCTITE EQ RB40 400D Benchtop Robot</b>	<ul style="list-style-type: none"> <li>&gt; 3 axes of movement</li> <li>&gt; 400 mm x 400 mm x 100 mm range of operation</li> <li>&gt; Accurate to within +/- 0.01 mm</li> </ul>	2104795
<b>LOCTITE EQ RB40 500D Benchtop Robot</b>	<ul style="list-style-type: none"> <li>&gt; 3 axes of movement</li> <li>&gt; 500 mm x 500 mm x 100 mm range of operation</li> <li>&gt; Accurate to within +/- 0.01 mm</li> </ul>	2103369

Note: Teach Pendant (1328356) must be ordered separately.

In combination with tried and tested LOCTITE dispensing equipment, the Benchtop Robots provide maximum flexibility for complex dispensing applications. Manually loaded, they allow users to repeatedly and reliably dispense dots, beads and potting deposits. Suitable valves and syringes can be easily connected to the Benchtop Robots.



## ACCESSORIES

Description	Order No.
30 and 55 ml syringe holder	1328355
30 and 55 ml syringe mounting bracket kit	569764
3 ¾ inch mounting rail with two cap screws	577151
300 ml cartridge mounting bracket kit	590762
98009, 98013, 1730181 valve robot mounting bracket kit	577150
97113 and 97114 valve mounting bracket kit	585942
Interface cable	1329222
Solenoid valve module	591031
Robot needle calibration kit	1569523
Teach pendant for RB40 Benchtop Robot	1328356
I/O junction box	1461974
Z height adjustment plate	591001
Adapter cable; 9-pin female D-shell to 3.5 mm plug	1053227

### Guarded Enclosure (contact technical services for information)

A light guard protected enclosure is available for each robot size. Such an enclosure ensures operator safety and comfort when handling our Benchtop Robots.



## 2-PART DISPENSING SYSTEMS

Product Name		
<b>LOCTITE 96001 Dual Cartridge Handgun</b>		<p>LOCTITE 96001 Dual Cartridge Handgun is a manually operated dispenser to apply 1:1 and 2:1 mix ratio products.</p>
<b>LOCTITE 97042 Pneumatic Dual Cartridge Handgun</b>		<p>LOCTITE 97042 Pneumatic Dual Cartridge Handgun is a pneumatic dispenser to apply 1:1 mix ratio products.</p>
<b>LOCTITE 983438 Manual Dual Cartridge Handgun</b>		<p>LOCTITE 983438 Manual Dual Cartridge Handgun is a manually operated dispenser to apply 1:1 and 2:1 mix ratio products.</p>
<b>LOCTITE 983439 Pneumatic Dual Cartridge Handgun</b>		<p>LOCTITE 983439 Pneumatic Dual Cartridge Handgun is a pneumatically operated dispenser to apply 1:1 and 2:1 mix ratio products.</p>
<b>LOCTITE EQ MM10 50 ml Dual Cartridge Dispenser</b>		<p>LOCTITE EQ MM10 50 ml Dual Cartridge Dispenser provides highly accurate control for applying drops or small beads of 2-part adhesives. It can be used as a stationary dispenser or can be integrated with the LOCTITE Benchtop Robots.</p>
<b>LOCTITE 97160 Dual Rotor Pump Controller</b>		<p>LOCTITE 97160 Dual Rotor Pump Controller provides all the functions required to control the EQ MM25 Dual Rotor Pump providing precise control of the rotation speed. It can be interfaced with a higher ranking PLC for integration into automatic systems.</p>
<b>LOCTITE EQ MM25 Dual Rotor Pump</b>		<p>LOCTITE EQ MM25 Dual Rotor Pump consists of two compact rotor pumps connected by a manifold where the two adhesive components are brought together. The individual rotor pump speeds can be controlled to provide adhesive mix ratios from 1:1 to 10:1.</p>
<b>LOCTITE EQ MM30 Dual Cartridge Pusher</b>		<p>LOCTITE EQ MM30 Dual Cartridge Pusher is used as a supply unit for volumetric 2-part dispensers, such as the EQ MM25 Dual Compact Rotor Pump. Two independent piston rods are mechanically driven and include path measurement to increase the process reliability.</p>



Application	Benefits	Order No.
2-part epoxy, polyurethane and hybrid products in 50 ml cartridges.	<ul style="list-style-type: none"> <li>➤ Convenient, cost-effective method of application</li> <li>➤ Good ergonomic features to minimise operator fatigue</li> </ul>	267452
2-part epoxy, polyurethane and hybrid products in 50 ml dual cartridges.	<ul style="list-style-type: none"> <li>➤ Lightweight and ergonomic design for easy use</li> <li>➤ Integrated air pressure regulator</li> <li>➤ Convenient 8-position thumb wheel pressure adjustment to control the dispense rate</li> </ul>	476898
2-part epoxy and silane modified polymer (SMPs) products in 400 ml cartridges.	<ul style="list-style-type: none"> <li>➤ Convenient, cost-effective method of application</li> <li>➤ Conversion kit is available to convert this applicator to 4:1 (478553)</li> </ul>	218312
2-part epoxy, silane modified polymer (SMPs) and hybrid products in 400 ml cartridges.	<ul style="list-style-type: none"> <li>➤ Convenient, cost-effective method to apply product and eliminates hand fatigue</li> <li>➤ Integrated air pressure regulator for precise flow control</li> <li>➤ Conversion kit is available to convert this applicator to 4:1 (478552)</li> <li>➤ 10:1 handgun option (470572)</li> </ul>	218311
2-part products including epoxy, acrylic and hybrid technology from 50 ml cartridges. Three options are available: 1) 1:1/2:1 "A" style cartridge 2) 1:1/2:1 "B" style cartridge 3) 4:1/10:1 "B" style cartridge	<ul style="list-style-type: none"> <li>➤ Clean cut-off due to precision anti-drip dispense valve</li> <li>➤ Independent cartridge pressure and actuation to control adhesive flow</li> <li>➤ Light weight design suits use with LOCTITE Benchtop robots</li> </ul>	1) 1633364 2) 1633365 3) 1633366
2-part methyl methacrylate (MMAs), epoxy, silicone and hybrid products in 400 ml cartridges (or individual reservoirs).	<ul style="list-style-type: none"> <li>➤ Easy menu navigation to allow users to select either the amount of product dispensed (in ml) or the dispense rate (in ml / min)</li> <li>➤ Very high repetition accuracy</li> <li>➤ Automatic purge feature to prevent mixer nozzle curing</li> </ul>	1533495
2-part methyl methacrylate (MMAs), epoxy, silicone and hybrid products in 400 ml cartridges.	<ul style="list-style-type: none"> <li>➤ Reversible direction of flow (suck-back) allows for an exact stoppage of the product flow</li> <li>➤ Designed for use in many applications from stationary work cells to integration with LOCTITE benchtop robots</li> </ul>	1774437
2-part methyl methacrylate (MMAs), epoxy, silicone and hybrid products in 400 ml cartridges.	<ul style="list-style-type: none"> <li>➤ Mixing ratio and dispensed volume can be monitored via path measurement and mechanical pointers</li> <li>➤ Low level sensing</li> <li>➤ Independent pressure control</li> </ul>	1529531

## LIGHT CURE SYSTEMS

### Product Name

#### LOCTITE EQ CL25 LED Spot Cure Controller and Accessories



LOCTITE EQ CL25 LED Spot Cure Controller is the universal controller that can be interfaced with up to four individual LED curing heads.

**Accessories (to be ordered separately) / Order No.:**

- > Short LED Head 365 nm / 1984957
- > Long LED Head 365 nm / 1984949
- > Short LED Head 405 nm / 2104788
- > Ø 3 mm Lens / 1305335
- > Ø 6 mm Lens / 1305333
- > Ø 10 mm Lens / 1305332
- > 1.7 m Connector cable / 1305339
- > 3.0 m Connector Cable / 1984961
- > 10 m Connector Cable / 1305337
- > UV Power Meter / 1523721

#### LOCTITE EQ CL32 LED Spot 365 nm / 405 nm



LOCTITE EQ CL32 LED Spot is a UV/visible light emitting light source. This system offers a high powered, portable light source capable of consistently curing many light cure products that respond to UV/visible light. Due to its unique LED technology, it can provide instant on/off performance and consistent light output. It can be run on its rechargeable batteries or while plugged to the included wall plug adapter.

#### LOCTITE 97055 UVALOC 1000



LOCTITE 97055 UVALOC 1000 chamber is the optimum UV curing oven that is designed for manual loading and unloading of components to be cured. The emission spectrum of the lamp and radiant power capacity have been designed specifically to meet the requirements of UV curable LOCTITE adhesives.

#### LOCTITE EQ CL30 LED Flood Cure System

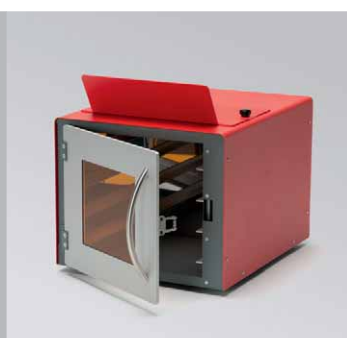


LOCTITE EQ CL30 LED Flood System is a modular, high intensity flood system with an exposure area of 100 mm x 100 mm. The modular configuration consists of an LED head (including connection cable) and controller.

**Items (to be ordered separately) / Order No.:**

- > LED Flood Controller 97104 / 1359255
- > EQ CL30 LED Flood Head 365 nm / 2139182
- > EQ CL30 LED Flood Head 380 nm / 2139181
- > EQ CL30 LED Flood Head 405 nm / 2139180

#### LOCTITE 97360 LED Flood Chamber



LOCTITE 97360 LED Flood Chamber consists of a chamber with adapter for one or two LED heads, work piece holder, door locking and ESD safe door. The chamber system is meant for use at manual working places. This chamber is supposed for the use with the LOCTITE EQ CL30 LED heads.

Application	Benefits	Order No.
UVA and UVV curing products.	<ul style="list-style-type: none"> <li>➤ No heat at curing area</li> <li>➤ High intensity output – up to 20 W/cm<sup>2</sup></li> <li>➤ Long LED lifetime – 20,000 hours</li> <li>➤ Compact size controller</li> </ul>	1473952
UVA and UVV curing products.	<ul style="list-style-type: none"> <li>➤ Combines handheld and stationary unit in one device</li> <li>➤ Robust aluminium housing</li> <li>➤ Ergonomic finger switch</li> <li>➤ Rechargeable using mini-USB adapter</li> <li>➤ Long focus length to allow for variable handheld application</li> </ul>	365 nm: 2182210 405 nm: 2182207
UVA, UVC and UVV curing products.	<ul style="list-style-type: none"> <li>➤ Standard unit supplied with a 1,000 W medium pressure mercury arc lamp to provide good tack-free and depth cure</li> <li>➤ Optional visible light bulb for plastic bonding</li> <li>➤ Optional iron-doped bulb for maximum depth of cure</li> <li>➤ Complete shielding of operator from exposure to UV light</li> <li>➤ High process safety due to the integrated UV monitoring system</li> </ul>	805741
UVA and UVV curing products.	<ul style="list-style-type: none"> <li>➤ High intensity at 50 mm distance (365 nm: &gt;500 mW/cm<sup>2</sup>, 380 nm: &gt;800 mW/cm<sup>2</sup>, 405 nm: &gt;1,000 mW/cm<sup>2</sup>)</li> <li>➤ Typical lifetime &gt;20,000 hours</li> <li>➤ LED arrays stackable side by side</li> <li>➤ No warm-up or cool-down period required</li> <li>➤ 144 individual LEDs</li> <li>➤ Energy efficient as LEDs produce minimal wasted energy</li> </ul>	Please see description
UVA and UVV curing products.	<ul style="list-style-type: none"> <li>➤ Provides fully interlocked guarding of LED Flood systems for operator safety</li> </ul>	1511839

## DISPENSE NEEDLES, MIXERS AND ACCESSORIES

Henkel offers suitable stationary accessories (such as nozzles, mixers etc.) for all pieces of equipment. In order to find the optimal nozzle or mixer, please contact your Henkel representative.


### Flexible Dispensing Tips: Dispensing Needle, Polypropylene (PPF), Helical Thread

Illustration / Example	Item No.	Order No.	Pack Size	Colour	Gauge	Inner Ø, mm
	97229	142640	50 pcs	Amber	15	1.37
	97230	142641	50 pcs	Green	18	0.84
	97231	142642	50 pcs	Pink	20	0.61
	97232	142643	50 pcs	Red	25	0.25

### Tapered Dispensing Tips: Dispensing Needle, Polyethylene – Conical (PPC), Luer-Lock

Illustration / Example	Item No.	Order No.	Pack Size	Colour	Gauge	Inner Ø, mm
	97221	88660	50 pcs	Grey	16	1.19
	97222	88661	50 pcs	Green	18	0.84
	97223	88662	50 pcs	Pink	20	0.61
	97224	88663	50 pcs	Blue	22	0.41

### High Precision Dispensing Tips: Dispensing Needle, Stainless Steel Standard (SSS), Luer-Lock

Illustration / Example	Item No.	Order No.	Pack Size	Colour	Gauge	Inner Ø, mm
	97225	88664	50 pcs	Amber	15	1.37
	97226	88665	50 pcs	Green	18	0.84
	97227	88666	50 pcs	Pink	20	0.61
	97228	88667	50 pcs	Red	25	0.25

### Additional Dispensing Tips and Mixer Nozzles

Illustration	Item No.	Order No.	Pack Size	Description
	98741	1146079	50 pcs	Dispensing needle, stainless steel – PTFE-lined (SSTL), 25 gauge
	97262	218288	2 each	Needle selection pack: 2 each of a variety of dispensing needles
	K1003100	88805	50 pcs	Formable dispensing tip, 21 gauge / 0.5 mm
	97248	218275	50 pcs	Luer-Lock® tip caps
	97233	88672	20 + 5 pcs	Luer-Lock® adapter kit: 20 Luer-Locks® and 5 adapters
	97207	88656	40 pcs	10 ml clear syringe barrel kit

## Additional Dispensing Tips and Mixer Nozzles

Illustration	Item No.	Order No.	Pack Size	Description
	97283	529462	40 pcs	10 ml amber syringe barrel kit, for UV products
	97263	218287	40 pcs	10 ml black syringe barrel kit, for UV and light cure adhesives
	97208	88657	2 pcs	10 ml syringe airline adapter
	97244	88677	20 pcs	30 ml clear syringe barrel kit
	97264	218286	20 pcs	30 ml black syringe barrel kit, for UV and light cure adhesives
	97245	88678	2 pcs	30 ml syringe airline adapter
	97290	397462	50 pcs	All plastic precision dispensing tip, 20 gauge
	984569	1487440	10 pcs	Static mixer for epoxy and PU in 50 ml, SQ 5.3-24
	984570	1487439	10 pcs	Static mixer for epoxy in 200 / 400 ml, SQ 7.5-24
	1034575	1034575	10 pcs	Static mixer MBX 6.5-20-S 10:1 for LOCTITE AA 3038
	8953593	1248606	10 pcs	Spray mix nozzle for LOCTITE PC 7255
	8953186	1104046	10 pcs	Static mixer 4:1/10:1 for 400 / 490 ml, MCX 08-18
	5289010	545996	10 pcs	Static mixer 1:1 for acrylics in 50 ml, MA 6.3-7
	98457	720174	10 pcs	Static mixer 1:1/2:1 in 200 / 400 ml, MC 8-24
	863585	367545	10 pcs	Static mixer 1:1 for MS polymers in 410 ml, MC 13-18
	8953187	1104047	10 pcs	Static mixer 4:1/10:1 in 400 / 490 ml, MCX 08-24
	8955989	1453183	10 pcs	Static mixer for LOCTITE 3090 and LOCTITE 4070, MLX 2.5-16-5
	n.a.	1826291	10 pcs	Static mixer 1:1/2:1 in 50 ml, MBH 3.2-16 S
	n.a.	1573153	10 pcs	Static mixer 1:1/2:1 in 50 ml, MBQ 5.0-24 L
	n.a.	1573135	10 pcs	Static mixer 1:1/2:1 in 400 ml, MFH 6.0-34 T

**LOCTITE®**  
**BONDERITE®**  
**TECHNOMELT®**  
**TEROSON®**  
**AQUENCE®**

**Henkel AG & Co. KGaA**  
Adhesive Technologies  
Henkelstr. 67  
40589 Düsseldorf  
Germany  
[www.loctite.de](http://www.loctite.de)

The data contained herein are intended as reference only. Please contact Henkel Technical Support Group for assistance and recommendation on specifications for these products.

Except as otherwise noted, all marks used above in this printed material are trademarks and/or registered trademarks of Henkel and/or its affiliates in US, Germany, and elsewhere. © Henkel AG & Co. KGaA, 2016