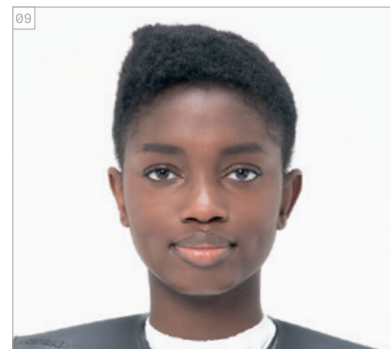
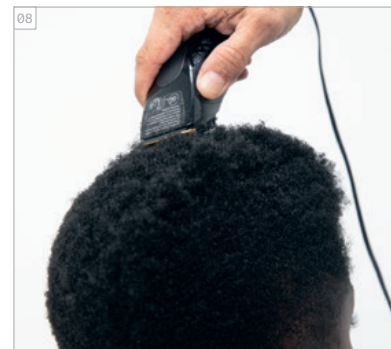
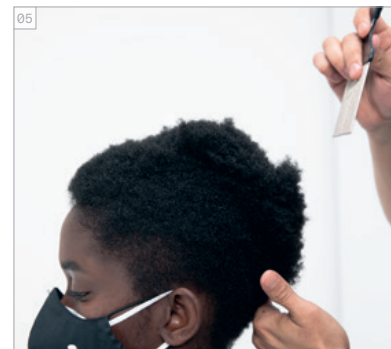


# E-PHORIA SALON

BEFORE // AFTER  
 BEFORE // AFTER



CUT STEP BY STEPS  
 CUT STEP BY STEPS

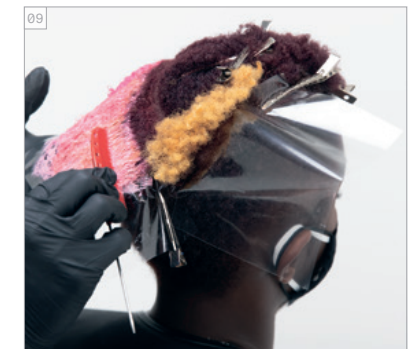
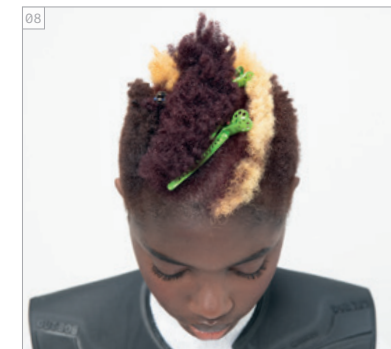
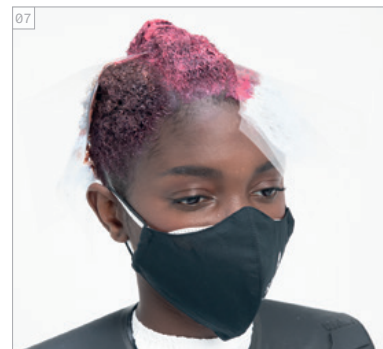
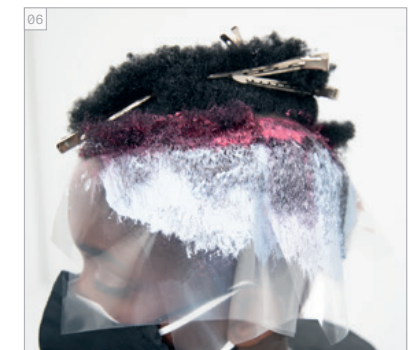
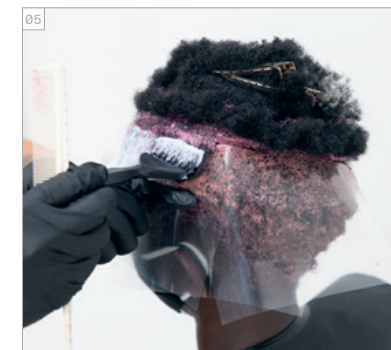
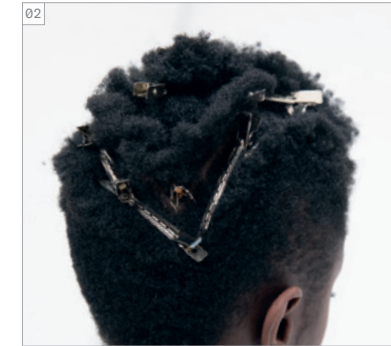
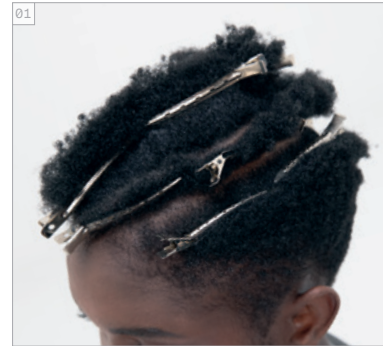


PRODUCTS USED  
 PRODUCTS USED



## #EssentialLooks

COLOUR STEP BY STEPS  
 COLOUR STEP BY STEPS



**COLOURS USED**

- COLOUR 1 - IGORA ROYAL 7-55 + 6-99 (2:1) + IGORA ROYAL OIL DEVELOPER 6% | 20 VOL.
- COLOUR 2 - IGORA ROYAL 9-98 + 0-89 (1:1) + IGORA ROYAL OIL DEVELOPER 9% | 30 VOL.
- COLOUR 3 - IGORA VARIO BLOND PLUS + IGORA ROYAL OIL DEVELOPER 9% | 30 VOL.
- COLOUR 4 - IGORA ROYAL 9-98 + 0-89 (1:1) + IGORA ROYAL OIL DEVELOPER 3% | 10 VOL.

**CARE USED**

- FIBRE CLINIX TRIBOND SHAMPOO
- FIBRE CLINIX TRIBOND TREATMENT FOR FINE HAIR
- FIBRE CLINIX HYDRATE BOOSTER + FIBRE CLINIX VIBRANCY BOOSTER

**STYLING USED**

- OSiS+ SPARKLER

**COLOURS USED**

- COLOUR 1 - IGORA ROYAL 7-55 + 6-99 (2:1) + IGORA ROYAL OIL DEVELOPER 6% | 20 VOL.
- COLOUR 2 - IGORA ROYAL 9-98 + 0-89 (1:1) + IGORA ROYAL OIL DEVELOPER 9% | 30 VOL.
- COLOUR 3 - IGORA VARIO BLOND PLUS + IGORA ROYAL OIL DEVELOPER 9% | 30 VOL.
- COLOUR 4 - IGORA ROYAL 9-98 + 0-89 (1:1) + IGORA ROYAL OIL DEVELOPER 3% | 10 VOL.

**CARE USED**

- FIBRE CLINIX TRIBOND SHAMPOO
- FIBRE CLINIX TRIBOND TREATMENT FOR FINE HAIR
- FIBRE CLINIX HYDRATE BOOSTER + FIBRE CLINIX VIBRANCY BOOSTER

**STYLING USED**

- OSiS+ SPARKLER

