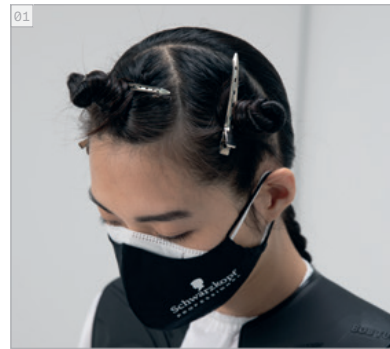


# E-PHORIA CATWALK

BEFORE // AFTER  
BEFORE // AFTER



CUT STEP BY STEPS  
CUT STEP BY STEPS



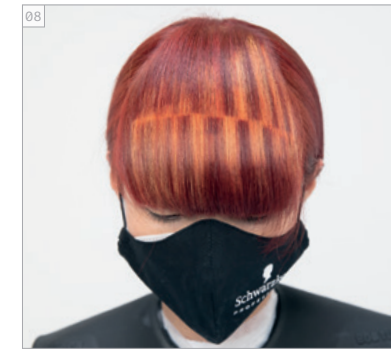
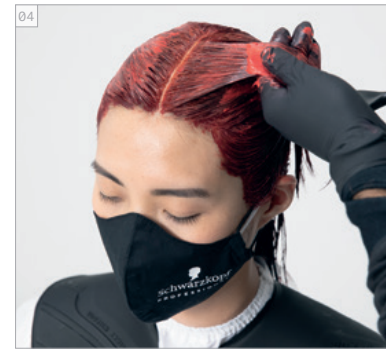
PRODUCTS USED  
PRODUCTS USED



## #EssentialLooks

COLOUR TECHNIQUE  
**#candlecolor**  
by @xpresioncreativos

COLOUR STEP BY STEPS  
COLOUR STEP BY STEPS



**COLOURS USED**

- COLOUR 1 - IGORA ROYAL 9-98 + 0-77 + PASTELFIER (1:3:1) + IGORA ROYAL OIL DEVELOPER 9% | 30 VOL.
- COLOUR 2 - IGORA ROYAL FASHION LIGHTS L-89 + L-77 (2:1) + IGORA ROYAL OIL DEVELOPER 9% | 30 VOL.
- COLOUR 3 - IGORA VARIO BLOND PLUS + IGORA ROYAL OIL DEVELOPER 9% | 30 VOL.
- COLOUR 4 - IGORA ROYAL 9-98 + 0-77 (1:10) + IGORA ROYAL OIL DEVELOPER 3% | 10 VOL.
- COLOUR 5 - IGORA ROYAL 8-77 + 0-77 (1:1) + IGORA ROYAL OIL DEVELOPER 3% | 10 VOL.

**CARE USED**

FIBRE CLINIX TRIBOND SHAMPOO // FIBRE CLINIX TRIBOND TREATMENT FOR COARSE HAIR // FIBRE CLINIX TAME BOOSTER + FIBRE CLINIX VIBRANCY BOOSTER

**STYLING USED**

OSiS+ HAIRBODY // OSiS+ SPARKLER

**COLOURS USED**

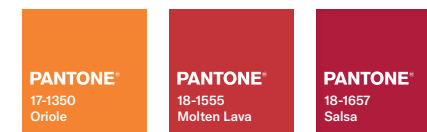
- COLOUR 1 - IGORA ROYAL 9-98 + 0-77 + PASTELFIER (1:3:1) + IGORA ROYAL OIL DEVELOPER 9% | 30 VOL.
- COLOUR 2 - IGORA ROYAL FASHION LIGHTS L-89 + L-77 (2:1) + IGORA ROYAL OIL DEVELOPER 9% | 30 VOL.
- COLOUR 3 - IGORA VARIO BLOND PLUS + IGORA ROYAL OIL DEVELOPER 9% | 30 VOL.
- COLOUR 4 - IGORA ROYAL 9-98 + 0-77 (1:10) + IGORA ROYAL OIL DEVELOPER 3% | 10 VOL.
- COLOUR 5 - IGORA ROYAL 8-77 + 0-77 (1:1) + IGORA ROYAL OIL DEVELOPER 3% | 10 VOL.

**CARE USED**

FIBRE CLINIX TRIBOND SHAMPOO // FIBRE CLINIX TRIBOND TREATMENT FOR COARSE HAIR // FIBRE CLINIX TAME BOOSTER + FIBRE CLINIX VIBRANCY BOOSTER

**STYLING USED**

OSiS+ HAIRBODY // OSiS+ SPARKLER



**IGORA ROYAL MIXES INSPIRED BY PANTONE**  
IGORA ROYAL MIXES INSPIRED BY PANTONE