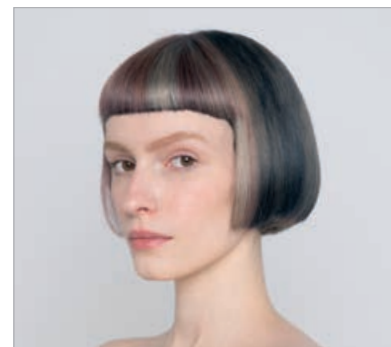
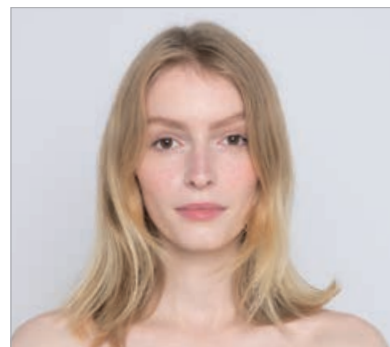
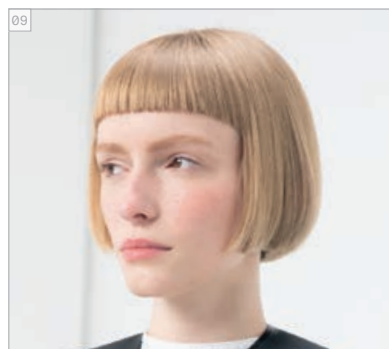
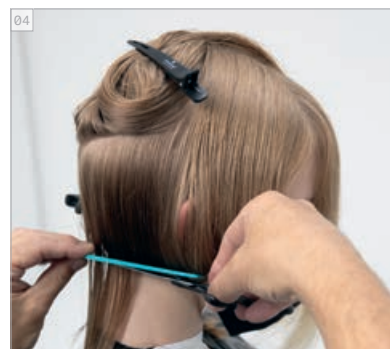
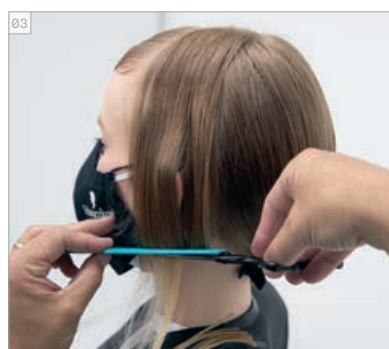
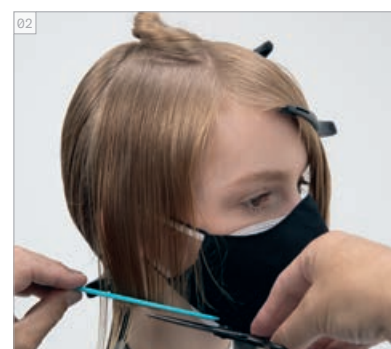


# QUINTESSENTIAL CATWALK

ANTES // DESPUÉS  
ANTES // DEPOIS



CORTE PASO A PASO  
PASSO A PASSO DE CORTE



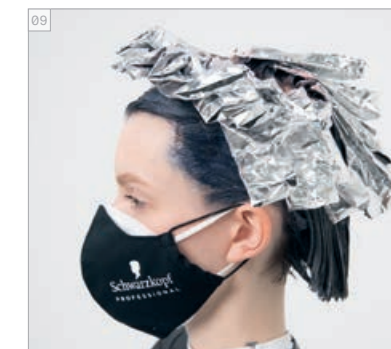
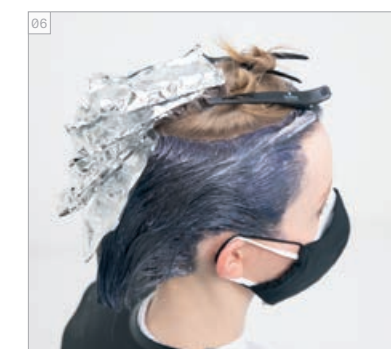
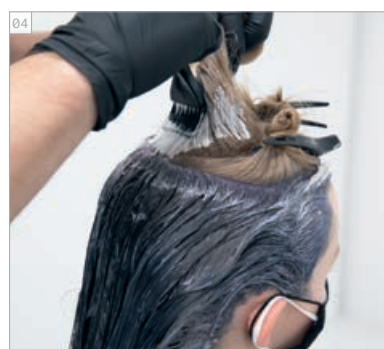
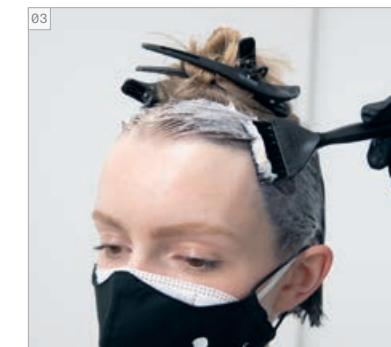
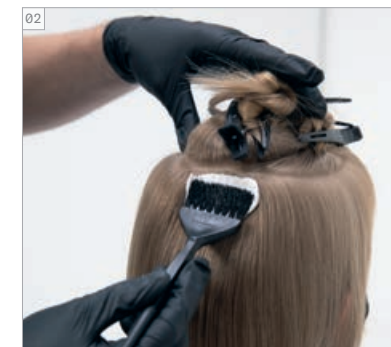
PRODUCTOS  
UTILIZADOS  
PRODUTOS USADOS



## #EssentialLooks

COLOUR TECHNIQUE  
#candystripes  
by @arjanbevers

COLOR PASO A PASO  
PASSO A PASSO DE COLORAÇÃO



### COLORES UTILIZADOS

COLOR 1 - IGORA ROYAL 8-19 + 9-24 + 1-1 (10:10:1)  
+ LOCIÓN ACTIVADORA IGORA ROYAL AL 3% | 10 VOL.  
COLOR 2 - IGORA ROYAL 9-1 + 0-89 (30:1)  
+ LOCIÓN ACTIVADORA IGORA ROYAL AL 3% | 10 VOL.  
COLOR 3 - IGORA VARIO BLOND PLUS  
+ LOCIÓN ACTIVADORA IGORA ROYAL AL 3% | 10 VOL.

### TRATAMIENTO UTILIZADO

CHAMPÚ FIBRE CLINIX TRIBOND  
TRATAMIENTO FIBRE CLINIX TRIBOND PARA CABELLO FINO  
BOOSTER FIBRE CLINIX HYDRATE + BOOSTER FIBRE CLINIX VIBRANCY

### ACABADO UTILIZADO

OSiS+ HAIRBODY  
OSiS+ MAGIC  
OSiS+ KEEP IT LIGHT

### CORES USADAS

COR 1 - IGORA ROYAL 8-19 + 9-24 + 1-1 (10:10:1)  
+ LOÇÃO ATIVADORA EM ÓLEO IGORA ROYAL 3% | 10 VOL.  
COR 2 - IGORA ROYAL 9-1 + 0-89 (30:1)  
+ LOÇÃO ATIVADORA EM ÓLEO IGORA ROYAL 3% | 10 VOL.  
COR 3 - IGORA VARIO BLOND PLUS  
+ LOÇÃO ATIVADORA EM ÓLEO IGORA ROYAL 3% | 10 VOL.

### CUIDADO USADO

CHAMPÔ FIBRE CLINIX TRIBOND  
TRATAMENTO FIBRE CLINIX TRIBOND PARA CABELLO FINO  
BOOSTER FIBRE CLINIX HYDRATE + BOOSTER FIBRE CLINIX VIBRANCY

### STYLING USADO

OSiS+ HAIRBODY  
OSiS+ MAGIC  
OSiS+ KEEP IT LIGHT



IGORA ROYAL  
MEZCLAS INSPIRADAS  
EN PANTONE  
MISTURAS  
IGORA ROYAL INSPIRADAS  
EM PANTONE