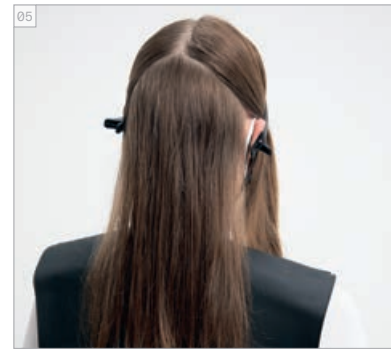
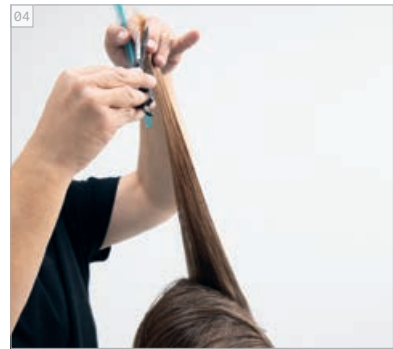
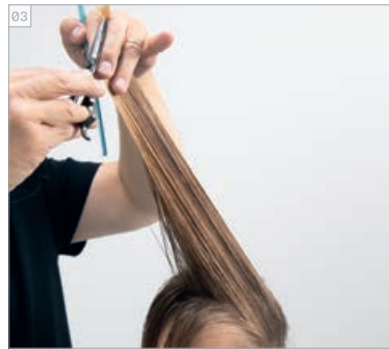
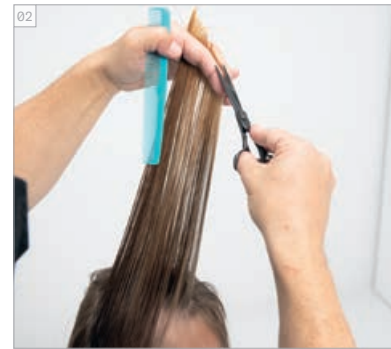


# NOVEL COMFORT CATWALK

ANTES // DESPUÉS  
ANTES // DEPOIS



CORTE PASO A PASO  
PASSO A PASSO DE CORTE



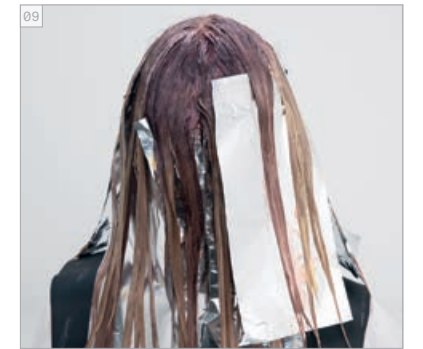
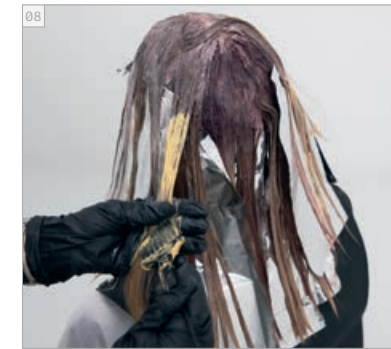
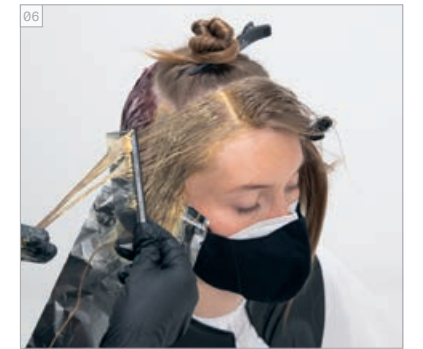
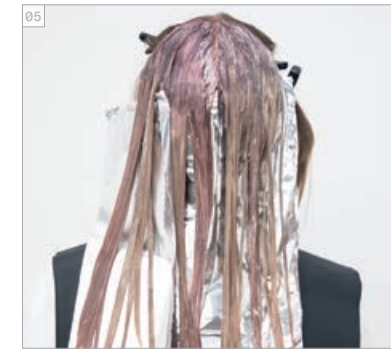
PRODUCTOS  
UTILIZADOS  
PRODUTOS USADOS



## #EssentialLooks

COLOUR TECHNIQUE  
#blushblurring  
by @lesleyjennison

COLOR PASO A PASO  
PASSO A PASSO DE COLORAÇÃO



**COLORES UTILIZADOS**

- COLOR 1 - IGORA ROYAL 8-65 + 9-98 (35:1)  
+ LOCIÓN ACTIVADORA IGORA ROYAL AL 3% | 10 VOL.
- COLOR 2 - IGORA ROYAL 9-4 + 8-84 (1:3)  
+ LOCIÓN ACTIVADORA IGORA ROYAL AL 6% | 20 VOL.
- COLOR 3 - IGORA ROYAL 9-55 + 9-7 (1:1)  
+ LOCIÓN ACTIVADORA IGORA ROYAL AL 3% | 10 VOL.
- COLOR 4 - IGORA ROYAL 9-55 + 9-7 (1:1)  
+ LOCIÓN ACTIVADORA IGORA ROYAL AL 9% | 30 VOL.

**TRATAMIENTO UTILIZADO**

CHAMPÚ FIBRE CLINIX TRIBOND  
TRATAMIENTO FIBRE CLINIX TRIBOND PARA CABELLO FINO  
BOOSTER FIBRE CLINIX VIBRANCY + BOOSTER FIBRE CLINIX HYDRATE

**ACABADO UTILIZADO**

OSiS+ GRIP // OSiS+ SESSION // OSiS+ KEEP IT LIGHT

**CORES USADAS**

- COR 1 - IGORA ROYAL 8-65 + 9-98 (35:1)  
+ LOÇÃO ATIVADORA EM ÓLEO IGORA ROYAL 3% | 10 VOL.
- COR 2 - IGORA ROYAL 9-4 + 8-84 (1:3)  
+ LOÇÃO ATIVADORA EM ÓLEO IGORA ROYAL 6% | 20 VOL.
- COR 3 - IGORA ROYAL 9-55 + 9-7 (1:1)  
+ LOÇÃO ATIVADORA EM ÓLEO IGORA ROYAL 3% | 10 VOL.
- COR 4 - IGORA ROYAL 9-55 + 9-7 (1:1)  
+ LOÇÃO ATIVADORA EM ÓLEO IGORA ROYAL 9% | 30 VOL.

**CUIDADO USADO**

CHAMPÚ FIBRE CLINIX TRIBOND  
TRATAMIENTO FIBRE CLINIX TRIBOND PARA CABELLO FINO  
BOOSTER FIBRE CLINIX VIBRANCY + BOOSTER FIBRE CLINIX HYDRATE

**STYLING USADO**

OSiS+ GRIP // OSiS+ SESSION // OSiS+ KEEP IT LIGHT



**IGORA ROYAL MEZCLAS INSPIRADAS EN PANTONE**  
MISTURAS IGORA ROYAL INSPIRADAS EM PANTONE