



Dial® 1 Liter Dispenser System

for every *place* and every *space*



**FOR USE IN A
VARIETY OF SPACES:**

Health & Fitness
Hospitality

Education
Healthcare

Property Management
Government/Military

Manufacturing
And MUCH MORE!

The Dial® 1 LITER Dispenser System

Specially designed bottle evacuates product with minimal waste. Observe soap* level through the translucent cover.

Dispenser reservoir holds 220 mL of product, making the total capacity 1220 mL - dispenser minimizes product waste and offers continuous service to customers.

*liquid hand soap and body wash





SHOWER SOLUTIONS



Dial® Spring Water®

Hydrating Body Wash

- All Day Freshness
- Washes Away Bacteria
- Moisture Balance Technology
- Clean Rinsing Formula



COUNT ON CLEAN



Dial® Hair + Body Wash

2-in-1 Dual Action Formula

- Clean Rinse Technology
- Moisture Rich Formula
- Advanced Hydration
- Hypoallergenic & Dermatologist-Tested

REDUCE

Hand Soap + Body Wash
Costs by up to **40%**

- Adjustable dose rate allows you to better control hand soap and body wash usage
- Factory setting of 1.2 mL vs. industry standard of 1.5 mL
- Reservoir minimizes product waste and provides continuous service to customers

Removable reservoir holds 220 mL of soap, for a total capacity of 1220 mL

Adjustable ring allows for easy control of dosage
3 Settings: .76 mL, 1.2 mL, 1.54 mL

Locking mechanism helps prevent theft and vandalism

1 liter bottles contain high quality Dial® products.

Bottle evacuates product with minimal waste.

Bottle is induction sealed for added safety. Seal is auto-punctured when installed in the dispenser. Eliminates mess.

Durable poly-carbonate, translucent cover, 17x stronger than a car taillight.





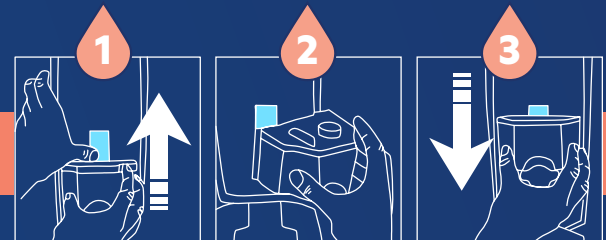
REFILL

Dosage Volume:

1,316 activations per refill bottle
at .76 mL dose

833 activations per refill bottle
at 1.2 mL dose

649 activations per refill bottle
at 1.54 mL dose



1
To remove the reservoir, press the tab in the center of the backplate, while sliding the reservoir up.

2
Remove the reservoir from the dispenser housing.

3
Reinstall the reservoir by sliding the unit down the backplate until it locks into place.

Dispenser Dimensions: H: 12.34" W: 5.12" D: 3.98"
D: includes push lever; deepest without lever = 3.90"




SINK SOLUTIONS



Dial® Gold Original


Antibacterial Liquid Hand Soap

- Kills 99.9% of Bacteria in a Single Wash
- Broad Spectrum Antibacterial Effectiveness
- Dermatologist-Tested
- Gently cleanses skin without drying
-  Nonfood Compounds Program Listed E2 Registration No. 155014



Dial® Sensitive Skin


Antibacterial Liquid Hand Soap

- Kills 99.9% of Bacteria in a Single Wash
- Broad Spectrum Antibacterial Effectiveness
- Hypoallergenic and Dermatologist-Tested for Sensitive Skin
- Specially formulated for frequent hand washers
- Gentle Care and Extra Mild
-  Nonfood Compounds Program Listed E2 Registration No. 155016



Dial® Basics

Green Seal Certified® Liquid Hand Soap

- Hypoallergenic and Dermatologist-Tested
- Mild and Gentle Formula
- Rich and Creamy Lather
- Fresh Floral Fragrance
-  * This product meets Green Seal® Standard GS-41A based on effective performance and protective limits on VOCs and human & environmental toxicity. GreenSeal.org.

**#1 DOCTOR
RECOMMENDED**
Antibacterial
Hand Soap Brand



DIAL® 1 LITER DISPENSERS + REFILLS



Dial® 1 Liter
Dispenser – Smoke
0 23400 03922 4
6/1 Liter



Dial® 1 Liter
Dispenser – Ice
0 23400 03920 0
6/1 Liter

SHOWER SOLUTIONS



Dial® Spring Water®
Body Wash
0 23400 04031 2
8/1 Liter



Dial® Hair +
Body Wash
0 23400 04029 9
8/1 Liter

SINK SOLUTIONS



Dial® Gold Original
Antibacterial
0 23400 84019 6
8/1 Liter



Dial® Sensitive Skin
Antibacterial
0 23400 82839 2
8/1 Liter



Dial® Basics
Hypoallergenic
0 17000 33821 7
8/1 Liter



Henkel Corporation
Dial® Professional
200 Elm St. Stamford, CT 06902
1.800.253.3425 | DialProfessional.com

