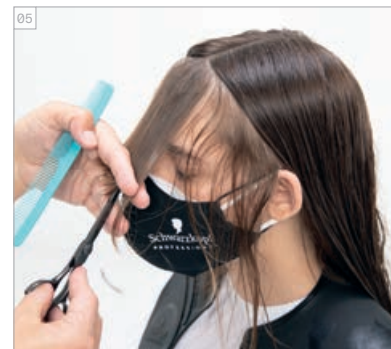
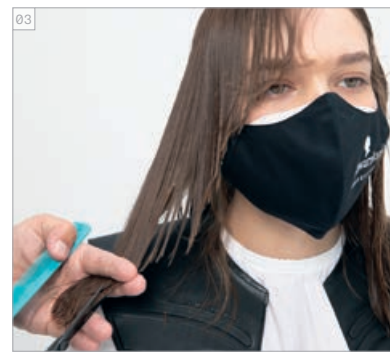
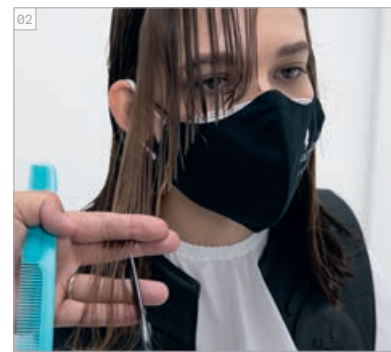


# NOVEL COMFORT SALON

BEFORE // AFTER  
VORHER // NACHHER



CUT STEP BY STEPS  
SCHRITT FÜR SCHRITT - SCHNITT



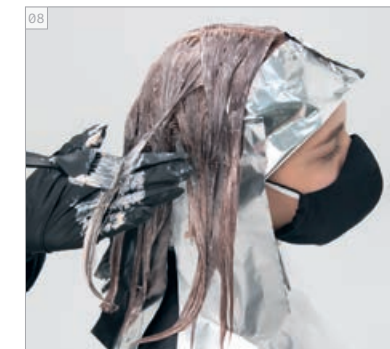
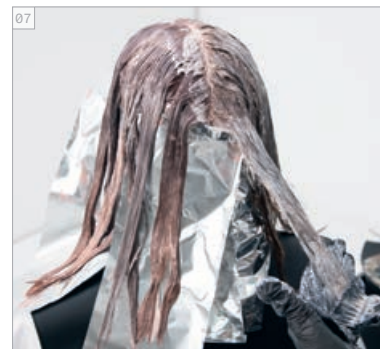
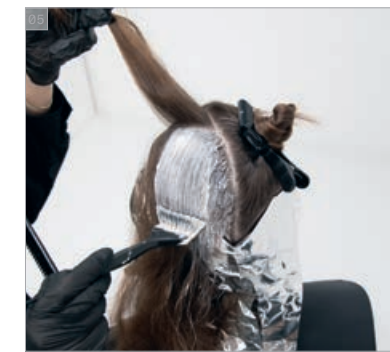
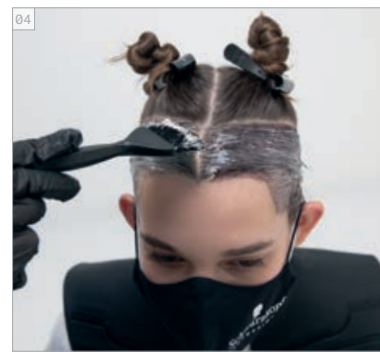
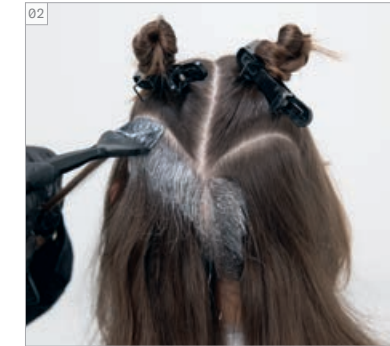
PRODUCTS USED  
VERWENDETE  
PRODUKTE



## #EssentialLooks

COLOUR TECHNIQUE  
#blushblurring  
by @lesleyjennison

COLOUR STEP BY STEPS  
SCHRITT FÜR SCHRITT - FARBE



**COLOURS USED**

- COLOUR 1 - IGORA ROYAL 6-46 + 3-68 (5:1)  
+ IGORA ROYAL OIL DEVELOPER 3% | 10 VOL.
- COLOUR 2 - IGORA ROYAL 4-68 + PASTELFIER (2:1)  
+ IGORA ROYAL OIL DEVELOPER 6% | 20 VOL.
- COLOUR 3 - IGORA ROYAL 9-4 + 8-84 (1:3)  
+ IGORA ROYAL OIL DEVELOPER 6% | 20 VOL.

**CARE USED**

- FIBRE CLINIX TRIBOND SHAMPOO
- FIBRE CLINIX TRIBOND TREATMENT FOR FINE HAIR
- FIBRE CLINIX VIBRANCY BOOSTER + FIBRE CLINIX VOLUMIZE BOOSTER

**STYLING USED**

- OSiS+ CURL HONEY
- OSiS+ KEEP IT LIGHT

**VERWENDETE FARBEN**

- FARBE 1 - IGORA ROYAL 6-46 + 3-68 (5:1)  
+ IGORA ROYAL OIL DEVELOPER 3% | 10 VOL.
- FARBE 2 - IGORA ROYAL 4-68 + PASTELFIER (2:1)  
+ IGORA ROYAL OIL DEVELOPER 6% | 20 VOL.
- FARBE 3 - IGORA ROYAL 9-4 + 8-84 (1:3)  
+ IGORA ROYAL OIL DEVELOPER 6% | 20 VOL.

**VERWENDETE PFLEGE**

- FIBRE CLINIX TRIBOND SHAMPOO
- FIBRE CLINIX TRIBOND TREATMENT FÜR FEINES HAAR
- FIBRE CLINIX VIBRANCY BOOSTER + FIBRE CLINIX VOLUMIZE BOOSTER

**VERWENDETE STYLINGPRODUKTE**

- OSiS+ CURL HONEY
- OSiS+ KEEP IT LIGHT



**IGORA ROYAL MIXES INSPIRED BY PANTONE**  
IGORA ROYAL MIXES INSPIRIERT VON PANTONE