


Schwarzkopf
PROFESSIONAL

C H R O M A
I
D



Together. A passion for hair.



SCAN FOR THE INSTRUCTIONS FOR USE.

Scannen für Anwendungshinweise. Scannez pour consulter le mode d'emploi. Scansiona per leggere le istruzioni per l'uso. Scan voor de gebruiksaanwijzing. Escanea para ver las instrucciones de uso. Digitaliza o código para veres as instruções de utilização. Σκανάρετε για να δείτε τις οδηγίες χρήσης. Skanna QR-koden för att se bruksanvisningen. Scan for mer informasjon. Skannaa ja lue käyttöohjeet. Kullanim talimatları için taratın. Naskenujte si návod k použití. További információért szkenneld be a kódot. Zeskanuj, aby otworzyć instrukcję użycia. Skenirajte za upute o korištenju. Noskenēijet lietošanas instrukcijai. Skanuokite norėdami sužinoti naudojimo instrukciją. Отсканируйте код, чтобы посмотреть инструкцию по применению. Naskenujte si návod na použitie. Scanati pentru instructiunile de folosire. Skenirajte za navodila za uporabo. Skano për udhëzime mbi përdorimin. الإستخدام لتعليق مسح

C H R O M I
A
D

**PEARL
SILVER**
ARGENT PERLÉ

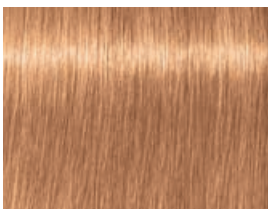


9.5-1



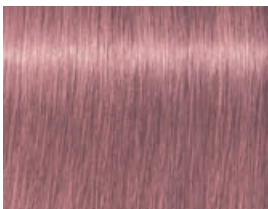
9.5-1

MIXES



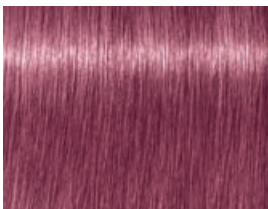
**VELVET
APRICOT**

9.5-1
7-77
(10:1)



**SOFT
LILAC
BEIGE**

9.5-1
PINK
(10:1)



**9.5-98
VIBRANT
BERRY**

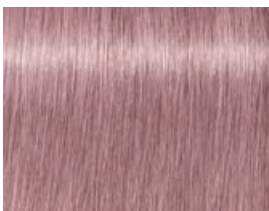
9.5-1
6-88
8-19
(5:1:5)

C H R O M A
I
D

**DUSTY
PINK**
ROSE POUDRÉ

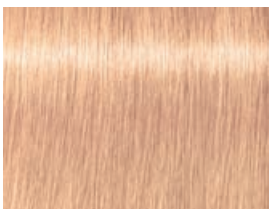


9.5-19



9.5-19

MIXES

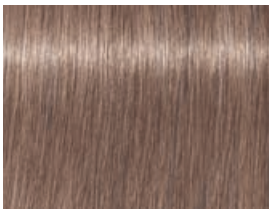


9.5-49
SANDY
ROSÉ

9.5-19

9.5-4

(3:1)



9-42
MAUVE
TAUPE

9.5-19

8-46

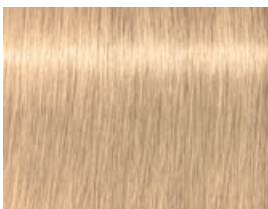
(2:1)

C H R O M A
I
D

**BEIGE
SAND**
BEIGE SABLE

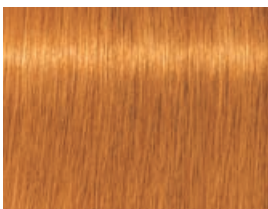


9.5-4



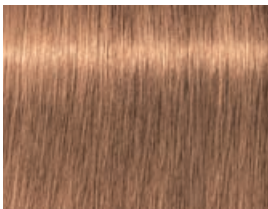
9.5-4

MIXES



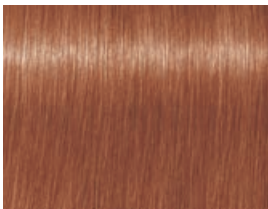
**9-5
GOLD
BOURBON**

9.5-4
7-77
CLEAR
(3:1:3)



**8-54
GOLDEN
MUSTARD**

9.5-4
8-46
7-77
(8:8:1)



**8-68
WARM
CHESNUT**

9.5-4
RED
(20:1)

C H R O M A
I
D

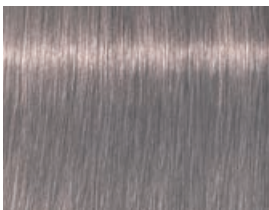
PLATINUM

GREY

GRIS PLATINE

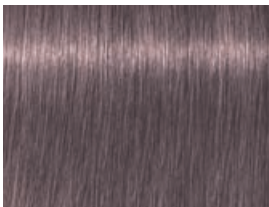


9-12



9-12

MIXES

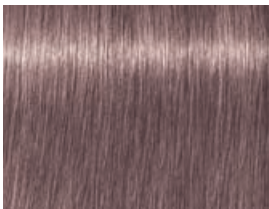


9-94
DUSTY
THISTLE

9-12

9.5-4

(5:1)



8-94
MOONSTONE
DOVE

9-12

6-46

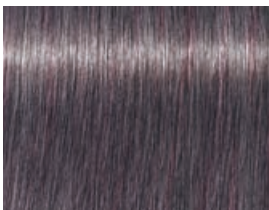
(5:1)

C H R O M A
I
D

**FROSTED
LAVENDER**
LAVANDE GIVRÉE

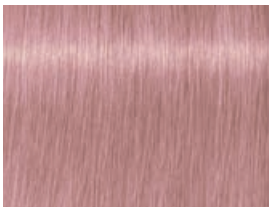


8-19



8-19

MIXES



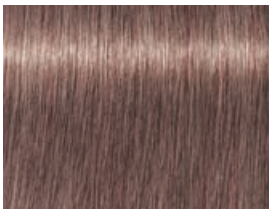
ROSE

PINK

8-19

CLEAR

(1:3:10)



8-49

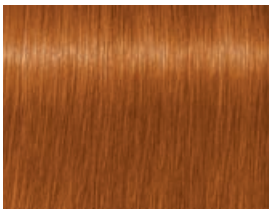
SILVER

MULBERRY

8-19

6-46

(6:1)



8-76

GOLDEN

CHESTNUT

7-77

8-19

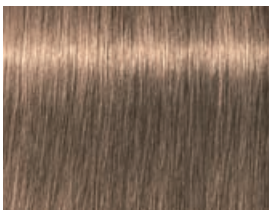
(1:3)

C H R O M A
I
D

**GLAZED
CARAMEL**
CARAMEL GLACÉ

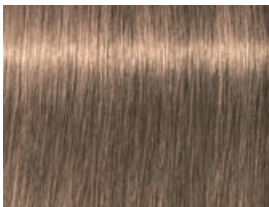


8-46



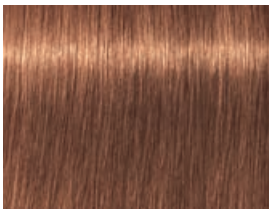
8-46

MIXES



9-46
PALE
ALMOND

8-46
CLEAR
(10:5)



7-46
OAK
CARAMEL

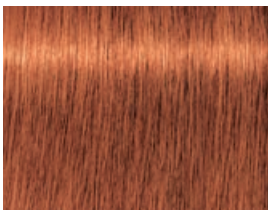
8-46
6-46
(1:1)

C H R O M I
A
D

**BRIGHT
COPPER**
CUIVRÉ ÉTINCELANT

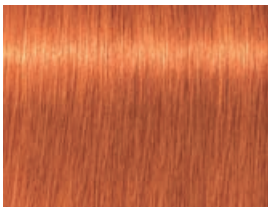


7-77



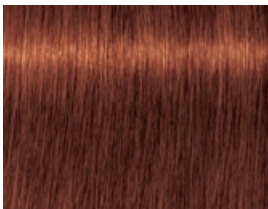
7-77

MIXES



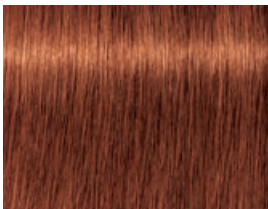
**8-77
VIVID
GINGER**

7-77
CLEAR
(2:1)



**7-76
AUBURN
LEAF**

7-77
6-46
9.5-1
(1:1:1)



**6-77
DEEP
AMBER**

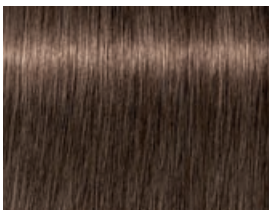
7-77
6-46
(3:1)

C H R O M A
I
D

**RAW
CACAO**
CACAO BRUT

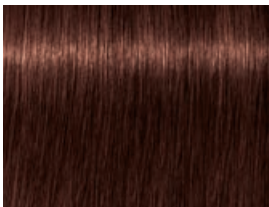


6-46



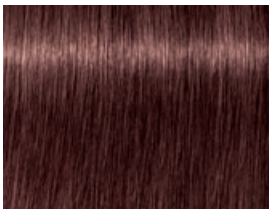
6-46

MIXES



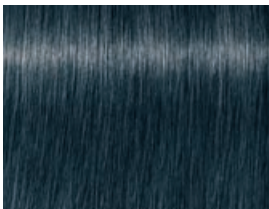
**7-6
TOASTED
MAROONS**

6-46
6-88
CLEAR
(5:1:5)



**5-88
DEEP
RUBY**

6-46
PINK
(2:1)



**4-21
MIDNIGHT
HUE**

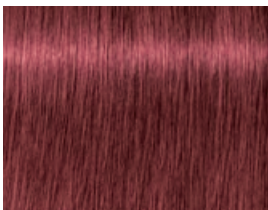
6-46
BLUE
CLEAR
(5:2:5)

C H R O M A
I
D

RUBY
RED
ROUGE RUBIS

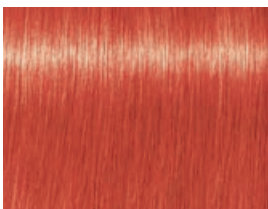


6-88

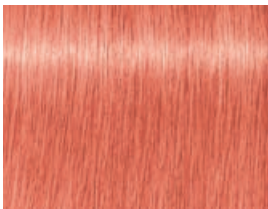


6-88

MIXES



**DUSK
SUN**
6-88
CLEAR
(1:2)



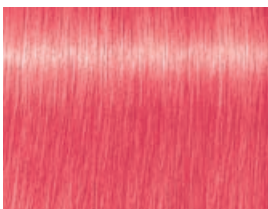
CORAL
6-88
PINK
CLEAR
(1:1:10)

C H R O M A
I
D

PINK
ROSE

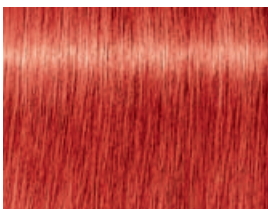


PINK



PINK

MIXES



**VIBRANT
PINK**

PINK
6-88
CLEAR
(4:1:5)



**SOFT
PEACH**

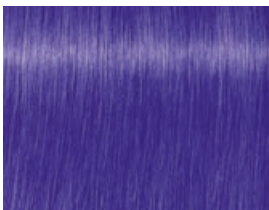
CLEAR
PINK
RED
(20:1:1)

C H R O M A
I
D

PURPLE
VIOLET

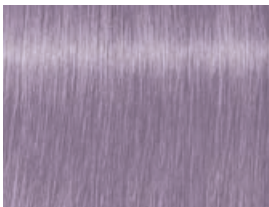


PURPLE



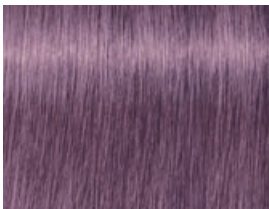
PURPLE

MIXES



**SOFT
LAVENDER**

CLEAR
RED
PURPLE
(50:1:3)



**DUSTY
MAUVE**

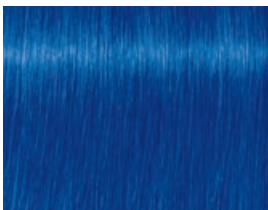
PURPLE
6-88
CLEAR
(1:1:10)

C H R O M A
I
D

BLUE
BLEU

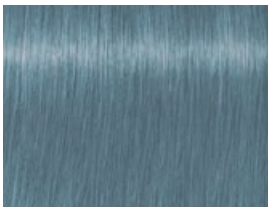


BLUE



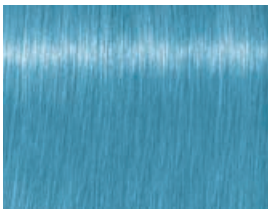
BLUE

MIXES



**STEEL
BLUE**

BLUE
9.5-19
CLEAR
(1:20:20)



**POWDER
BLUE**

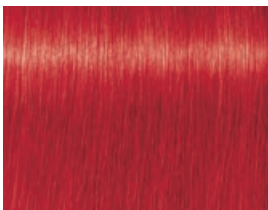
BLUE
CLEAR
(1:30)

C H R O M A
I
D

RED
ROUGE

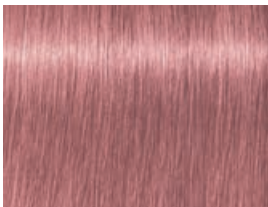


RED



RED

MIXES



**BLUSHED
PLUM**

CLEAR

RED

PURPLE

(30:3:1)

C H R O M A
I
D

CLEAR
CLAIR



CLEAR

C H R O M A I D

