

# Certified waterproofing system solutions

For wet rooms and floors in prefabricated buildings and modular bathroom pods

[www.ceresit.com](http://www.ceresit.com)

# Ceresit





### Tiling solution for wet rooms with light usage load

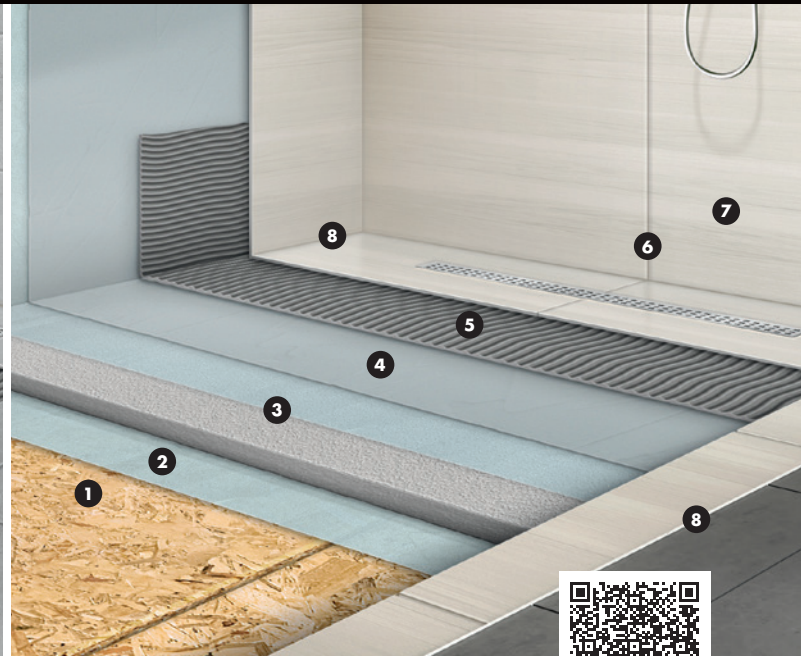
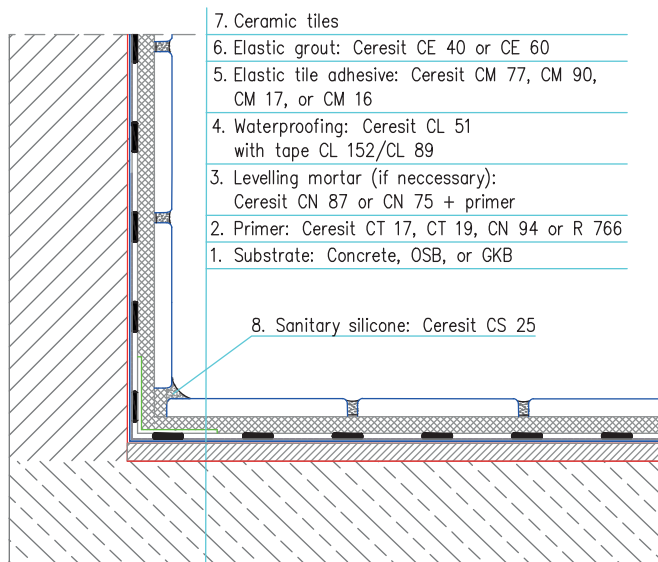
For wet rooms with light usage load, designed for living spaces with 1–5 users, but also kitchens, sanitary rooms and hallways.

The waterproofing with Ceresit CL 51 offers sufficient durability and elasticity, but it is not intended for extreme conditions.

The system is suitable for both water and electric underfloor heating.

**Relevant documentation and certificates:**

- Complies with EAD 030352-00-0503 requirements
- M1, EC1, EC1 Plus certification for products
- LEED and BREEAM declarations available on request



### Tiling solution for wet rooms with heavy usage load

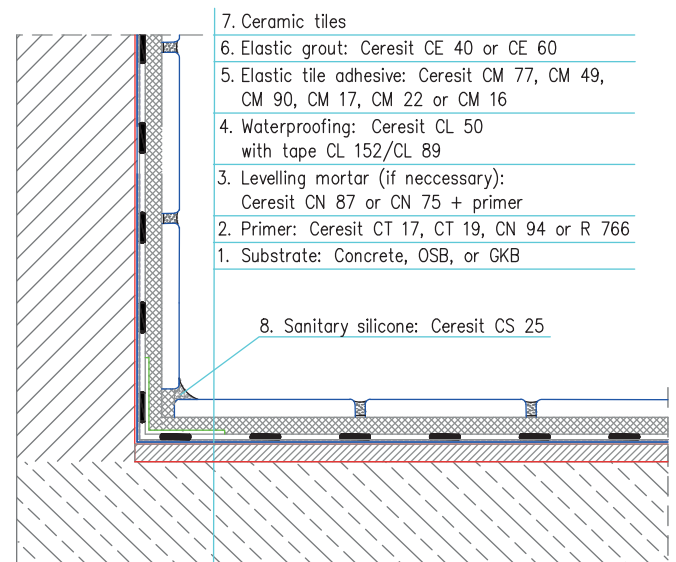
For bathroom pods produced and stored in different conditions.

Wet rooms with heavy usage load are intended for residential spaces with over 5 users, as well as for public bathrooms and saunas, private cottages (seasonal intermittent heating), hotels, etc. **The system is highly flexible and durable, capable of withstanding significant loads, temperature fluctuations, and freeze-thaw cycles.** For optimal results under heavy usage, it is recommended to use Ceresit epoxy grouts.

The system is suitable for both water and electric underfloor heating.

**Relevant documentation and certificates:**

- Complies with EAD 030352-00-0503 requirements
- M1, EC1, EC1 Plus certification for products
- LEED and BREEAM declarations available on request





## Tiling solution for wet rooms with flexible sheet as waterproofing

### For steel- or wood-frame modular houses bathrooms.

For wet rooms using flexible sheet as waterproofing. Waterproofing layer is achieved through the use of a special fabric. This system is exceptionally durable, capable of withstanding heavy loads, temperature fluctuations, and freeze-thaw cycles. The work process is faster, as only single insulation layer is needed. Liquid sealing as adhesive provides double security for structures subject to vibration or transportation.

The system is suitable for both water and electric underfloor heating.

#### Relevant documentation and certificates:

- Complies with EAD 030436-00-0503 requirements
- M1, EC1, EC1 Plus certification for products
- LEED and BREEAM declarations available on request

## Fast tiling solution for wet areas

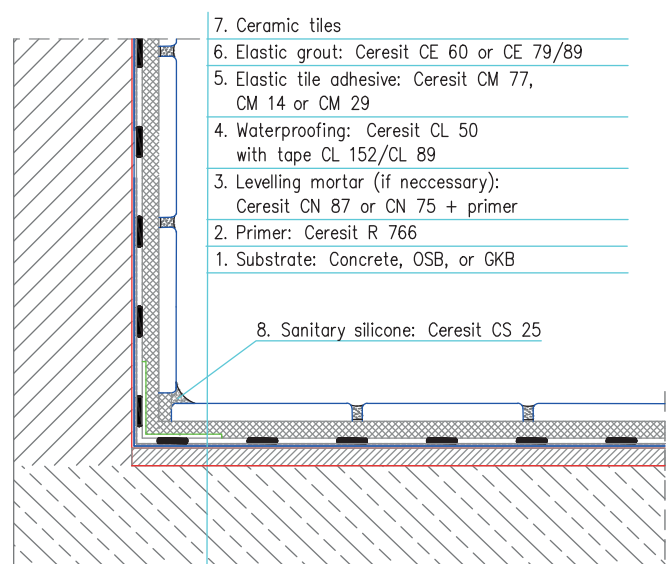
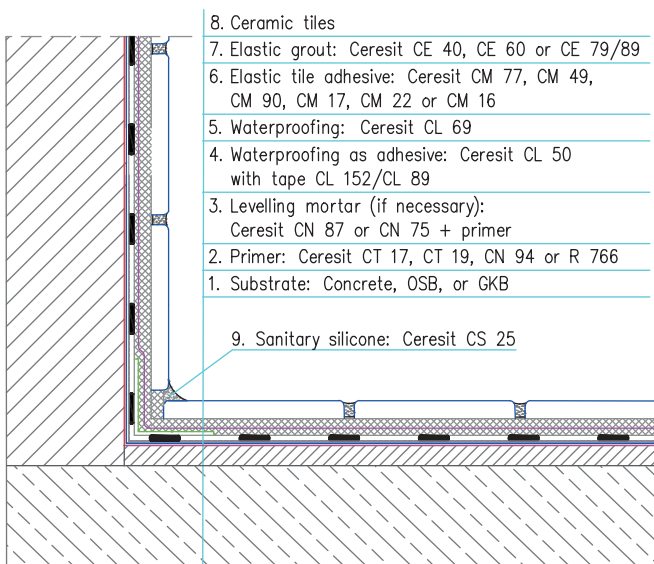
### For time critical industrial production.

The solution combines products with short curing times, from priming to final layer sealing and grouting applications.

The system is suitable for both water and electric underfloor heating.

#### Relevant documentation and certificates:

- Complies to EAD 030352-00-0503
- M1, EC1, EC1 Plus certification for products
- LEED and BREEAM declarations available on request





## LVT solution for wet areas

### For bathroom pods with LVT covering.

LVT (Luxury Vinyl Tile) can be used in wet areas; however, it needs a fully waterproof system underneath to ensure watertightness of the room. Due to the flexible nature of LVT, high load-bearing waterproofing should be used on walls and floors.

The system is suitable for both water and electric underfloor heating.

### Relevant documentation and certificates:

- DoP 01303 and 01233 acc. to EN 13813
- M1, EC1, EC1 Plus certification for products
- LEED and BREEAM declarations available on request

## Linoleum or PVC solutions

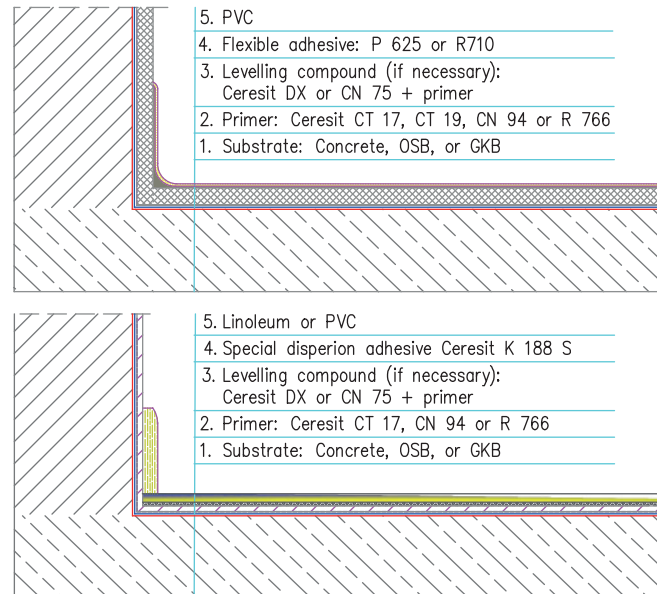
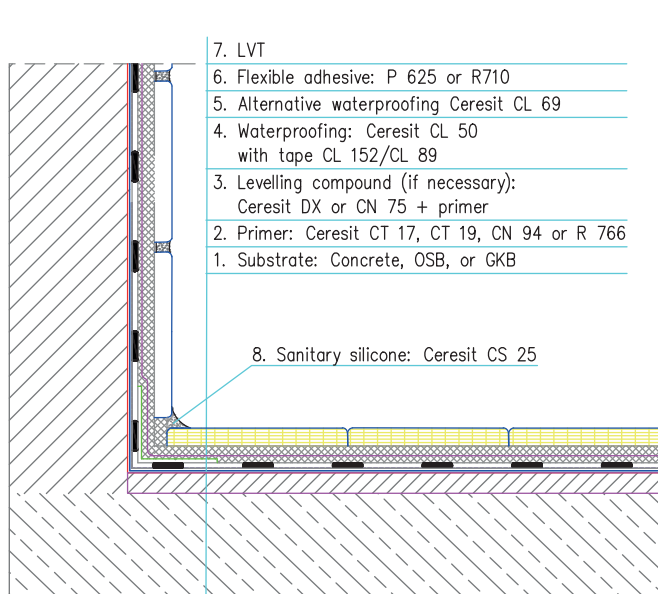
### For bathroom pods with PVC and for dry areas with PVC or linoleum.

Linoleum and PVC flooring are more affordable construction solutions, often used in offices and workspaces due to their easy installation and low maintenance needs. Special levelling compounds and adhesives are necessary to ensure resistance to office chairs rollers and higher walking load.

The system is suitable for both water and electric underfloor heating.

### Relevant documentation and certificates:

- DoP 01233, 01303 and 01230 acc. EN 13813
- M1, EC1, EC1 Plus certification for products
- LEED and BREEAM declarations available on request





## Tiling solution for dry rooms

Common solution for all types of subfloors where exposure to water and moisture is minimal.

Different flexibility grades of adhesives and grouts available for all tile sizes and types (natural stone, gres, earthenware, mosaic, composite, glass, etc.), taking in account water absorption, crystal size and porosity of tiles.

The system is suitable for both water and electric underfloor heating.

### Relevant documentation and certificates:

- DoP 01303 and 01230 acc. EN 13813
- DoP 01491, 01505, 00045 and 01234 acc. EN 12004
- M1, EC1, EC1 Plus certification for products
- LEED and BREEAM declarations available on request

## LVT solution for dry areas

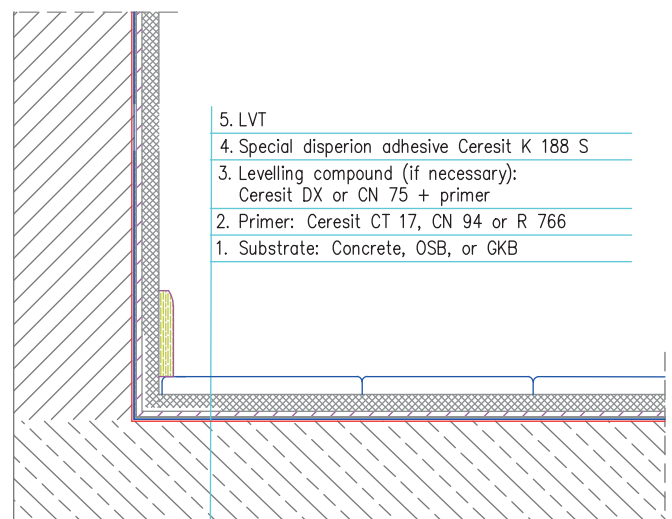
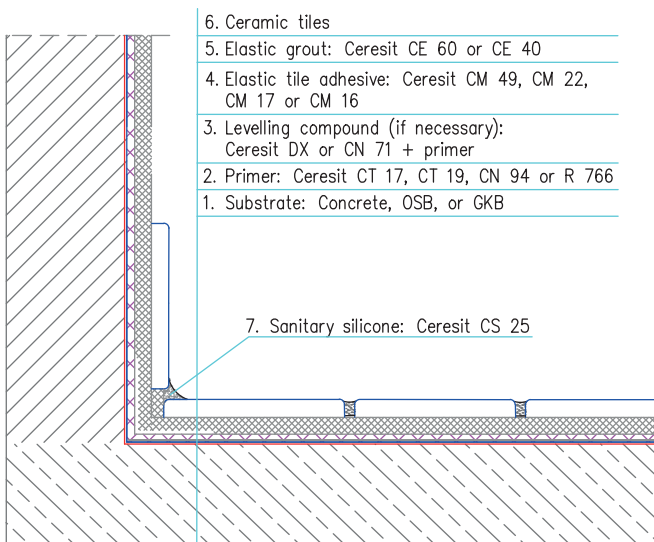
LVT is suitable for dry areas as it is less sensitive to moisture compared to natural or laminate parkquets.

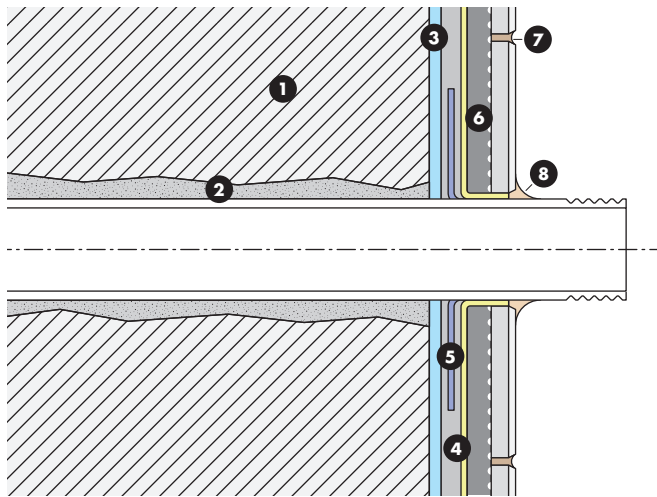
Due to its flexible nature, this solution needs a durable subfloor and flexible adhesive to ensure stability of entire or whole system.

The system is suitable for both water and electric underfloor heating.

### Relevant documentation and certificates:

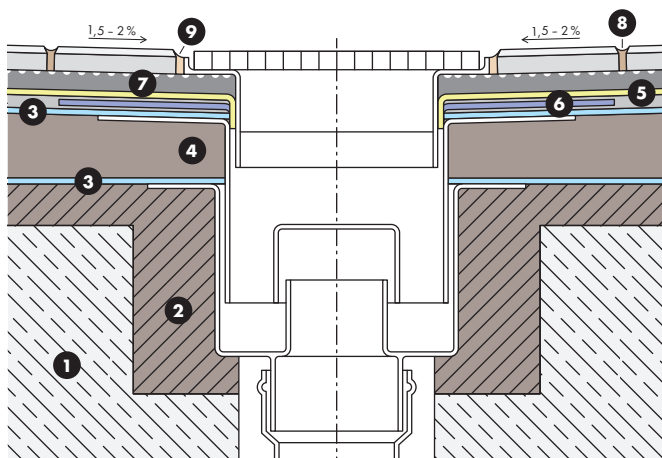
- DoP 01303 and 01233 acc. to EN 13813
- M1, EC1, EC1 Plus certification for products
- LEED and BREEAM declarations available on request





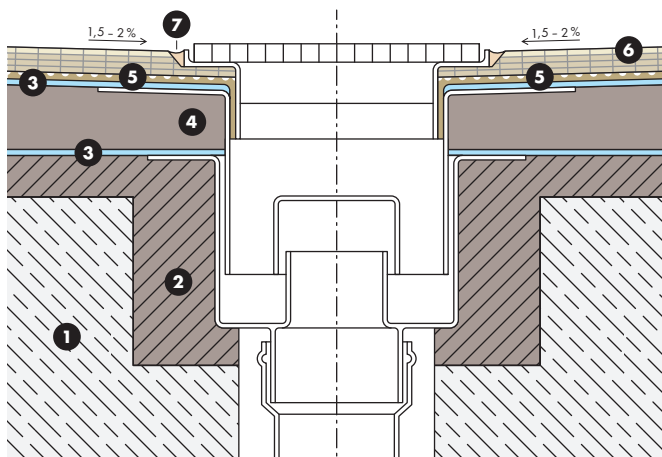
## Horizontal penetration of pipes

- 1 Substrate: Concrete, OSB or GKB
- 2 Ceresit WhiteTeq PU foam
- 3 Primer: Ceresit CT 17, CT 19, CN 94 or R 766
- 4 Waterproofing: 2x Ceresit CL 51 or CL 50 + Ceresit CL 69
- 5 Wall sealing: Ceresit CL 525 or CL 83 Ultratape
- 6 Elastic tile adhesive: Ceresit CM 77, CM 49, CM 22, CM 17 or CM 16
- 7 Elastic grout: Ceresit CE 60, CE 40 or CE 79/89
- 8 Sanitary silicone: Ceresit CS 25



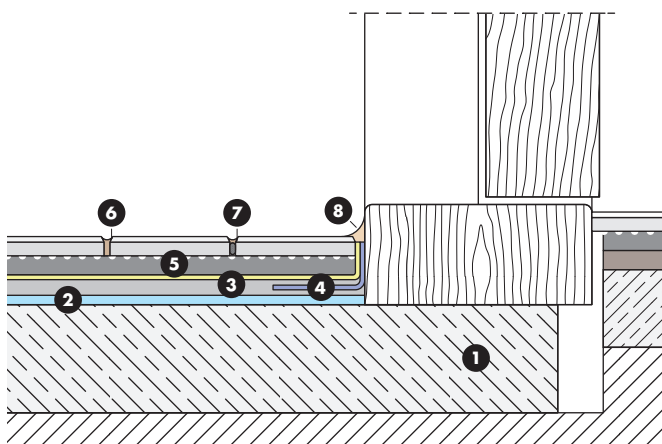
## Floor gully for ceramic tiles

- 1 Substrate: Concrete, OSB or GKB
- 2 Levelling compound (optional): Ceresit RS 88
- 3 Primer: Ceresit R 766, CT 17, CT 19 or CN 94
- 4 Levelling mortar: Ceresit CN 87 or CN 75 + primer
- 5 Waterproofing: 2x Ceresit CL 51 or CL 50 + Ceresit CL 69
- 6 Floor sealing: Ceresit CL 525
- 7 Elastic tile adhesive: Ceresit CM 77, CM 49, CM 90, CM 22, CM 17 or CM 16
- 8 Elastic grout: Ceresit CE 40, CE 60 or CE 79/89
- 9 Sanitary silicone: Ceresit CS 25 or CS 15



## Floor gully with PVC

- 1 Substrate: Concrete, OSB or GKB
- 2 Levelling compound (optional): Ceresit RS 88
- 3 Primer: Ceresit R 766, CT 17, CT 19 or CN 94
- 4 Levelling mortar: Ceresit CN 87 or CN 75 + primer
- 5 Flexible adhesive: Ceresit P 625 or R 710
- 6 PVC floor
- 7 Sanitary silicone: Ceresit CS 25 or CS 15



## Joint with doorstep

- 1 Substrate: Concrete, OSB or GKB
- 2 Primer: Ceresit CT 17, CN 94 or R 766
- 3 Waterproofing: 2x Ceresit CL 51 or CL 50 + Ceresit CL 69
- 4 Waterproofing tapes: Ceresit CL 152 / CL 89
- 5 Elastic tile adhesive: Ceresit CM 77, CM 49 or CM 17
- 6 Elastic grout: Ceresit CE 40, CE 60 or CE 79/89
- 7 Joint cord + Sanitary silicone Ceresit CS 25
- 8 Sanitary silicone: Ceresit CS 25



## CL 50 EXPRESS 2-K

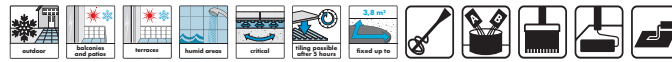
### FLEXIBLE WATERPROOFING PROTECTION COAT

packaging: 12.5 kg plastic container containing 2 components  
 storage: 12 months in a dry environment. Protect from frost!  
 consumption: approx. 2.3 kg/m<sup>2</sup> (two layers) depending on the type of substrate  
 tiling: approx. 5 hours, after application last layer

Ceresit CL 50 is used for sealing of substrates before laying ceramic and natural stone coverings inside and outside. The product is recommended for areas that are permanently or partly exposed to moisture/water, such as: swimming pools, terraces, balconies, bathrooms, public showers, toilets commercial kitchens.

Can be applied to concrete plasters and cement screeds, heated floors, cement and lime plasters, aerated concrete, calcium sulphate, gypsumsubstrates, plasters and plasterboards.

Do not use CL 50 outside on old ceramics, mastic asphalts and paintwork.



## CL 51 EXPRESS 1-K

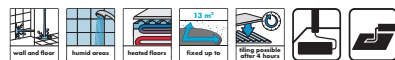
### FLEXIBLE 1-COMPONENT SEALING FILM FOR USE UNDER TILES AND SLABS IN DOMESTIC AREAS

packaging: 2 kg, 5 kg and 15 kg plastic container  
 storage: 12 months in a dry environment. Protect from frost!  
 consumption: approx. 1.1 kg/m<sup>2</sup> (two layers)  
 tiling: approx. 4 hours from the application second layer

#### Interior walls and floors:

For seamless and jointless sealing under ceramic coverings in damp and wet areas, e.g. in private bathrooms with bathtubs, showers, toilets and kitchens.

In the case of floor constructions with insulating layers, CL 51 is applied directly onto the load-distribution layer (screed). Also suitable for use on heated screeds.



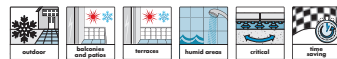
## CL 69 ULTRA-DICHT

### ULTRA-TIGHT WATERPROOFING AND UNCOUPLING MEMBRANE

packaging: roll of 30 m in a paper box  
 storage: 24 months in a dry environment  
 membrane width: 1 m  
 color: yellow

Indoors CL 69 can be used on walls and floors, outdoors only on floors. CL 69 is used for trouble-free, flexible composite waterproofing of wall and floor surfaces under ceramic and natural stone tiles and slabs in bathrooms, showers, swimming pools and wet rooms. It is suitable for all moisture exposure classes. Due to its uncoupling effect, CL 69 is suitable for the installation of ceramic tiles and slabs on critical substrates, as well as for the removal of ceramic and natural stone coverings.

**Suitable substrates:** Concrete and lightweight concrete, cement screeds, anhydrite screeds, mastic asphalt screeds, dry screeds, heated floor constructions, existing ceramic coverings, gypsum plasterboards, fibrous plasterboards, flush jointed brickwork, plaster and masonry binders, cement render, lime/cement render, gypsum plaster and rigid foam boards.



## CE 60

### ONE-COMPONENT POLYMER GROUT FOR JOINTS WITH A WIDTH OF 6 mm, READY TO USE

packaging: 2 kg, plastic container  
 storage: 18 months in a dry environment. Protect from freezing during transport and storage.  
 consumption: approx. 0.35 kg/m<sup>2</sup> and may vary depending on the size of the tiles, the width and depth of the joint

CE 60 can be used for grouting all types of ceramic tiles, such as, e.g.: ceramics, terracotta, gres, sintered ceramics, porcelain ceramics, glass and ceramic mosaic, natural stone tiles (insensitive for color change), for thin layered stoneware tiles:

- for floor and wall heating,
- for surfaces requiring flexibility, e.g. chipboard boards, plasterboard boards, bathrooms, kitchens,
- for internal wet areas – surfaces where water flows without would accumulate (showers and showers without a bath),
- for residential buildings, public and commercial buildings and hotels, guesthouses and sports facilities.

- for matching all sizes of tiles and pavers – from mosaic to large-format wall and floor tiles.
- for vertical and horizontal surfaces,
- for deformable and critical substrates,
- for substrates exposed to vibrations,

CE 60 can be used in ecological and energy-saving applications for buildings and passive buildings.



## HENKEL ADHESIVES TECHNOLOGIES



Henkel is world **leading Adhesives producer** who supplies adhesives, sealants and functional coatings to a broad scope of industries ranging from automotive and electronics OEMs, packaging, consumer goods, food industry and construction. We enable the transformation of entire industries, giving our customers a competitive advantage and offering our customers standard and tailor-made solutions that advance their products.

Henkel offers a range of adhesives solutions for **prefabrication** and **modular housing production** supported by professional customer care.

## CERESIT CONSTRUCTION ADHESIVES



**With the key categories:** ceramic adhesives, waterproofing, thermal insulating homes, Ceresit provides a wide range of special products and system solutions to meet the needs of prefabrication industry and construction professionals. Ceresit stands for reliability and professional quality – but also for improving energy efficiency and protecting natural resources.

All the solutions we offer are based on consistent quality and long-time experience. Henkel Ceresit offers **ETA certified** tiling solutions for wet rooms, as well as PVC, LVT, parquet and linoleum covered flooring solutions for wet and dry rooms in modular applications.

## SUSTAINABILITY FOCUS



To contribute to solving global challenges, Henkel Adhesives aim to make a positive impact on sustainability. Our aim is to drive impact in three main areas: **Climate, Circularity and Safety**. We start with optimizing our own footprint by using sustainable raw materials, while also continuously improving our production and logistics activities

Building on that, we will offer every customer solution and service that enable emission reduction and circularity. We aim for close and solution oriented co-operation with modular and prefabricated element producers in order to support the move towards more efficient and environment friendly construction.

# Ceresit



Älvbyta, Finland



Rakennusbetoni, Finland



**Henkel AG & Co. KGaA**  
Henkelstraße 67  
40589 Düsseldorf  
Germany  
[www.ceresit.com](http://www.ceresit.com)

**Henkel Polska Sp. z o.o.**  
ul. Domaniewska 41  
02-672 Warsaw  
Polska  
[www.ceresit.pl](http://www.ceresit.pl)

**Henkel ČR, s.r.o.**  
Boudníkova 2514/5  
180 00 Praha 8  
Česká republika  
[www.ceresit.cz](http://www.ceresit.cz)

**Henkel Balti OÜ**  
Sõbra 61  
50106 Tartu  
Estonia  
[www.ceresit.ee](http://www.ceresit.ee)

**HENKEL SLOVENSKO, spol. s r.o.**  
Mlynské Nivy 55  
821 09 Bratislava  
Slovensko  
[www.ceresit.sk](http://www.ceresit.sk)