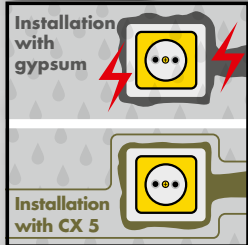
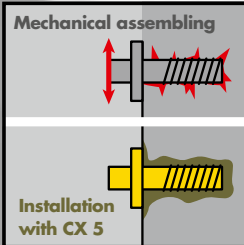


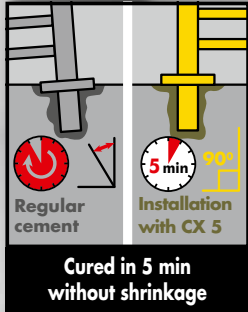
ADVANTAGES OF CX 5 EXPRESS



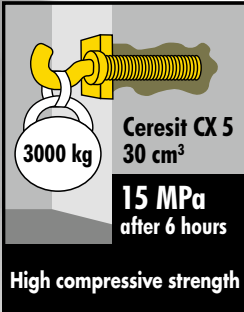
Safe, protects from humidity



Stronger, safer, easier



Cured in 5 min without shrinkage



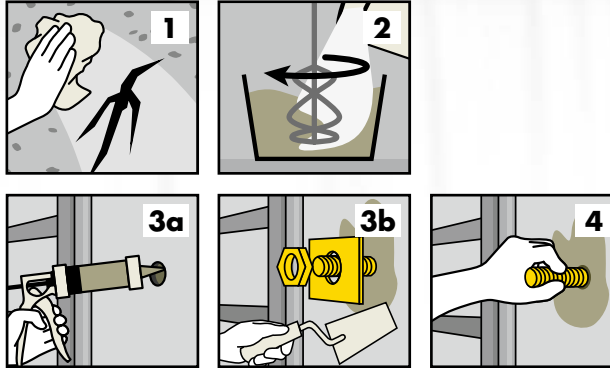
High compressive strength

TECHNICAL CHARACTERISTICS

Application time	4 min	
Application temperature	+5°C to +30°C	
Compressive strength (EN 12190)	after 1 hour	≥ 11* MPa
	after 2 hours	≥ 12* MPa
	after 6 hours	≥ 15 MPa
	after 24 hours	≥ 25 MPa
	after 28 days	≥ 40 MPa
Flexural strength (EN 13892-2)	after 6 hours	≥ 3,0 MPa
	after 24 hours	≥ 3,0 MPa
	after 28 days	≥ 6,0 MPa
Adhesion to ribbed reinforcing bars Ø16 mm covered with concrete mortar (EN 1881)	in dry conditions	≥ 16 MPa
	in dry not-dedusted conditions	≥ 10 MPa
	in wet conditions	≥ 16 MPa
Consumption	approx. 1.6 kg/l cavity volume	
Packaging	2 or 5 kg bucket, 5 or 25 kg bag	

* according to independent laboratory analyses

APPLICATION



1. Prepare the surface: substrate must be solid and load-bearing, open-pored, rough and have a good keying structure. Mechanically remove any dirt. Pre-wet the substrate thoroughly, but without creating puddles.
2. CX 5: add product to clean, clear water and stir until completely free of lumps. For appropriate mixing ratio see technical data sheet.
3. Apply the product immediately after mixing – do not over-stir.
4. Set the element and provide proper levelling and stability of bonding. Check correction time in technical data sheet.

MAIN PROPERTIES

- Rapid setting – cured in 5 minutes
- For fixing metal and plastic elements
- For temporary sealing spot water leaks
- Shrink free
- High strength
- Water and frost resistant
- Chloride free, does not cause corrosion of metal elements
- Inside and outside buildings
- For horizontal and vertical surfaces



www.ceresit.com

Quality for Professionals



CX 5 EXPRESS Express bathroom fixing



Assembly mortar for rapid anchoring and fixing

- Easy
- Quick
- Strong

Quality for Professionals

QUICK, EASY AND RELIABLE FIXING

Quick:

- rapid setting – cured in 5 min
- rapid anchoring and stopping water leaks
- quick increase of compressive strength



Easy:

- simple and quick mixing with water
- no need of professional equipment
- wide range of application temperatures

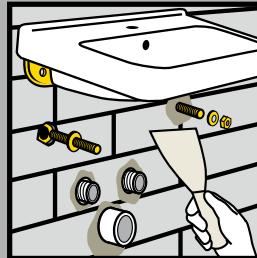
Strong:

- resistant to initial loads after 6 hours up to 3 tons
- high final compressive and flexural strength
- frost and water resistant

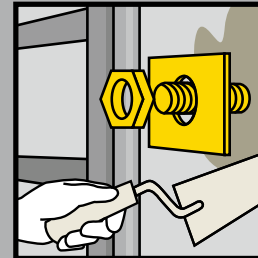
CX 5 EXPRESS APPLICATION AREAS

- Rapid anchoring and fixing metal and plastic elements in concrete and cement plasters
- Quick and easy repair of concrete spalls and closing of cracks up to 20 mm wide (wider, only with sand mixed)
- Temporary sealing of spot water leaks

CX 5 EXPRESS can be used for bathroom works like anchoring hooks, towel rails, vents, bathroom fittings and accessories, fixing pipes and valves as well as installing electric devices like sockets, boxes, lights, heaters and many more.



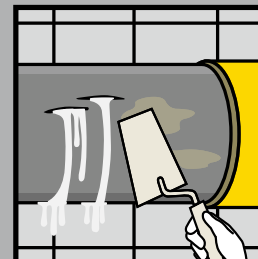
Installation of sanitary utensils and furniture



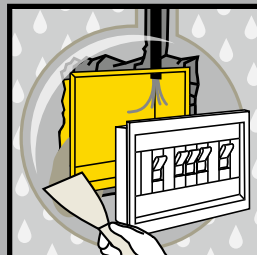
Installation of hooks for bathroom equipment



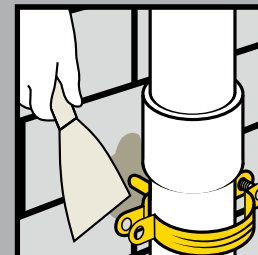
Crack repair and water leak protection – indoor



Temporal leak plugging



Installation of electric devices (sockets)



Installation of water pipe fixings



The elements marked in yellow are the ones that can be assembled using CX 5 EXPRESS.