

Ceresit



Quick fixing solutions, all around the building

Discover CX range of fixing products
– for new and renovated constructions.



Quality for Professionals

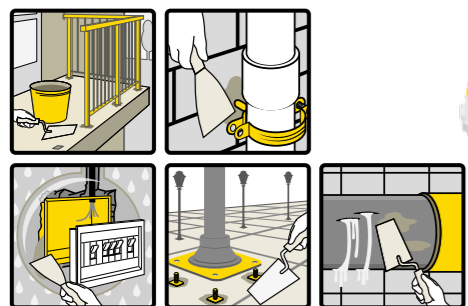
Quick fixing solutions – all around the building

CX 5 Express – Rapid assembly mortar

Mortar for indoor and outdoor use for rapid anchoring, fixing and temporary sealing spot water leaks

The ideal solution for rapid anchoring and fixing of steel and plastic elements in brickwork and concrete, like railings, posts, sockets, anchors or pipes. Also suitable for the quick and easy repair of concrete spalls and for closing cracks up to 20 mm wide and for temporary sealing spot water leaks.

- Rapid setting – cured in 5 minutes
- For fixing metal and plastic elements
- Shrink free
- High strength
- Water and frost resistant
- Chloride free, does not cause corrosion of metal elements
- For horizontal and vertical surfaces
- For indoor and outdoor application

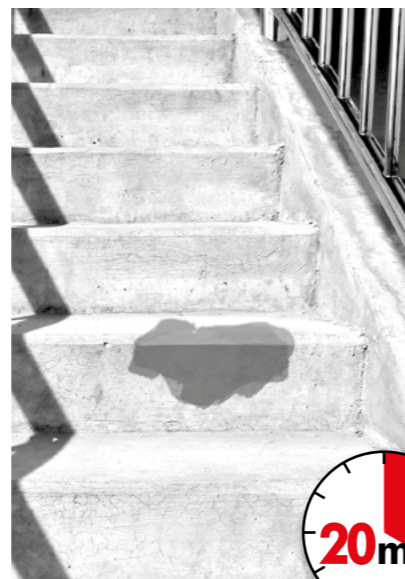
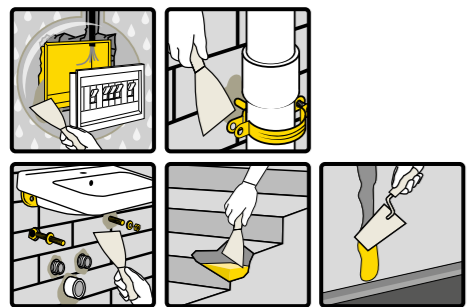


CX 20 Comfort – Assembly and repair mortar

Mortar for precise assembly of elements and filling up cavities, characterized by a comfortable setting time

The product dedicated to precise fixing of the elements and filling cavities, allowing for comfortable work up to 20 minutes. Perfect for reconstruction of damaged wall corners and concrete stairs edges, fixing metal elements and electrical outlets, installing plumbing. Helps to handle any task without effort and rush.

- Comfortable setting time (20 min)
- High strength after curing
- For reconstruction of concrete elements
- For filling cavities and cracks up to 50 mm
- For horizontal and vertical surfaces
- For indoor and outdoor application
- Light grey color
- Water and frost resistant



CX 10 Universal – PU adhesive

Ready to use, fast drying PU adhesive with excellent adhesion to building substrates

No more heavy bags, additional equipment, dust and dirt during fixing. With CX 10 work can be finished with significantly less effort and in short time – it helps to save up to 50% of working time. CX 10 eliminates thermal bridges and offers high bonding strength covering requirements of masonry mortars (EN 998-2). It has excellent adhesion on most building materials like wood, concrete, stone, metal etc. CX 10 successfully replaces traditional cement mortar in brickwork with aerated concrete blocks. CX 10 is suitable for installation of plasterboard or OSB, window sills, treads and risers on stairways, wooden slats masking the door frames.

- Does not require using electric equipment, water or professional devices
- Low-expanding and highly efficient
- Multi-tasking
- Ready to use
- Increased thermal insulation properties
- Highest bonding strength
- Precise and firm bonding just after 2 hours
- Does not contain CFC-propellants



CX 15 Strong – Grouting mortar

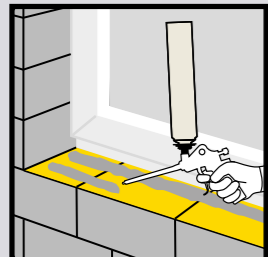
Mortar for high-strength grouting, anchoring and assembly

Product dedicated to grouting joints between prefabricated members and in-situ concrete. Ideal solution for filling openings and recesses in concrete as well as for underpinning brickwork in order to achieve cavity-free anchoring, e.g. of securing bolts. Ensures solid grouting of bridge bearings, crane rails and machine support legs. CX 15 has excellent adhesion to solid, load-bearing, clean concrete or steel substrates. With grouting depths or widths of 50 to 100 mm mortar should be extended with 25% gravelly sand of 4 to 8 mm grain size.

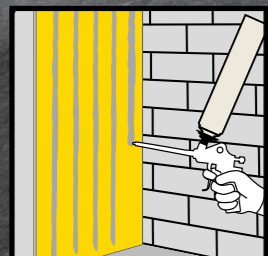
- Very high strength
- Non-shrink and low-stress
- High flowability
- Free of chloride and aluminous cement - does not cause corrosion of metal elements
- Resistant to water, frost and de-icing salt
- Fast hardening
- Certified according to EN 1504-3 and EN 1504-6



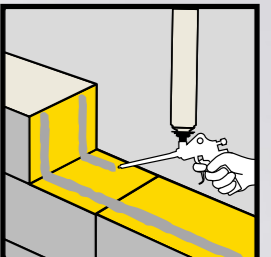
Application fields



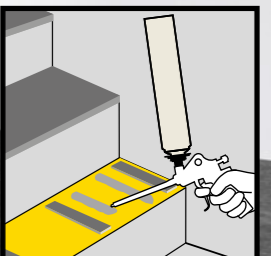
Fixing window sills



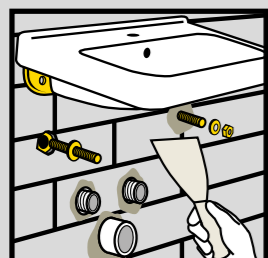
Bonding GB, OSB and styrofoam elements



Building partition walls (acc. to ETA)



Fixing treads and risers on stairways



Installation of sanitary utensils and furniture



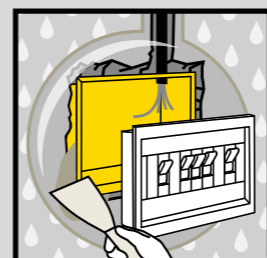
Assembly of children playground facilities



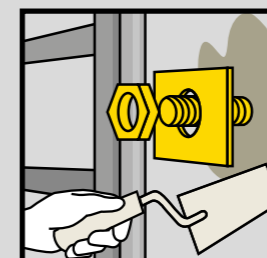
Crack repair and water leak protection - indoor



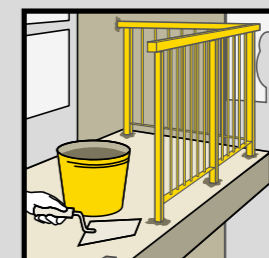
Fixing outdoor lampstands and street piles



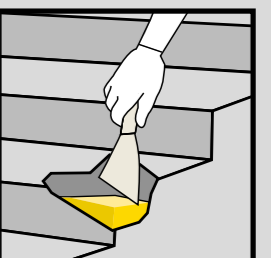
Installation of electric devices (sockets)



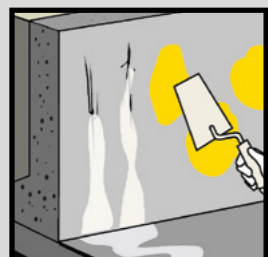
Installation of hooks for domestic equipment



Fixing balcony railings



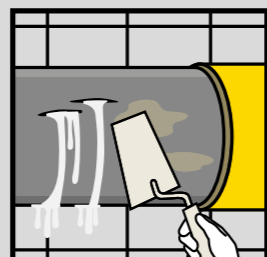
Concrete elements reconstruction



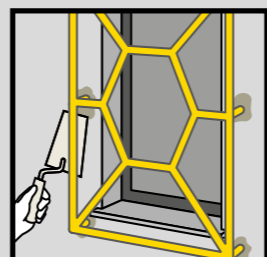
Crack repair and water leak protection - outdoor



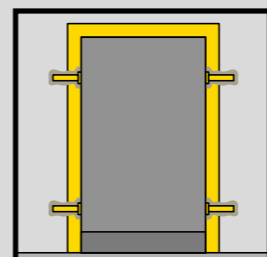
Fixing of sewage wells and drainage grids



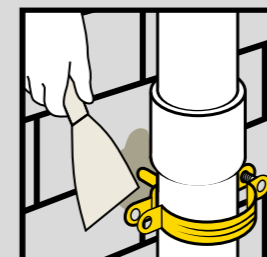
Temporal leak plugging



Assembly of metal window grids



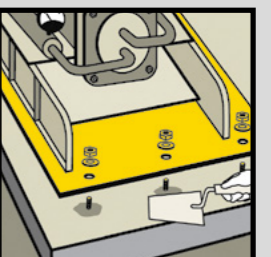
Anchoring door and window frames



Installation of water pipe fixings



Assembly of fence elements



Anchoring of heavy industrial equipment

CX products comparison: scope of use

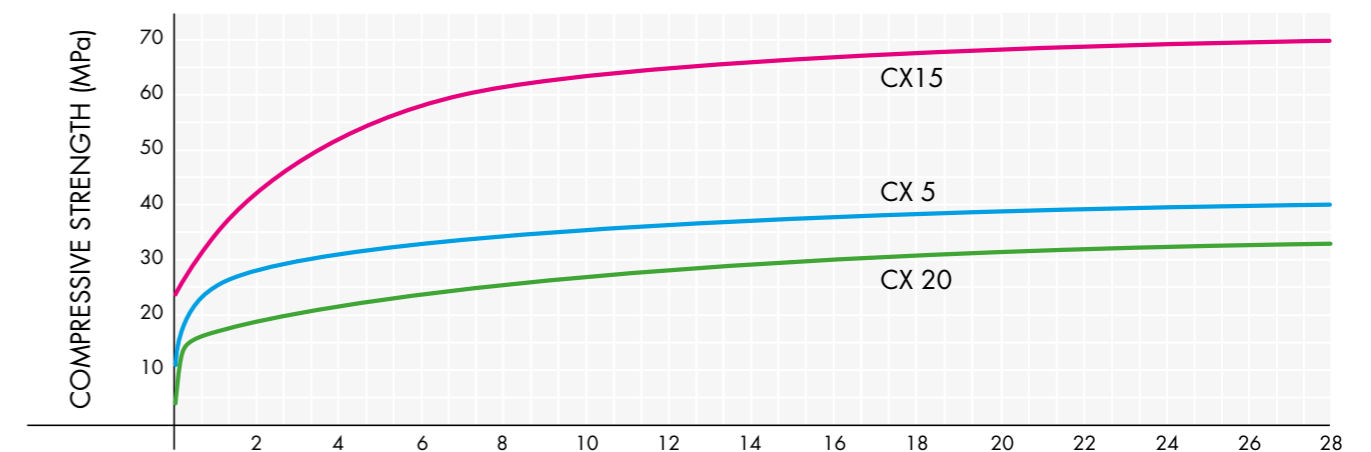
| APPLICATION FIELDS | CX 5 | CX 10 | CX 15 | CX 20 |
|---|--|---------|---|---|
| Repair | | | | |
| Filling cavities & repair cracks – thickness range | local repairs up to 20/50 mm; over 20/50 mm* mixed with sand 1:1 | 10-20mm | 20-50 mm / 50-100 mm mixed with 25% aggregate | 5-50 mm / 50-100 mm mixed with sand 1:1 |
| Temporary stop water leaks | ✓ | | | |
| Reconstruction of concrete elements like stair steps, street curbs, etc. | ✓ | | ✓ | ✓ |
| Repair and install sewages | ✓ | | ✓ | ✓ |
| Repair edges of industrial floors | ✓ | | ✓ | |
| Installation of protective concrete layers | | | ✓ | |
| Levelling tanks, dams and pools | | | ✓ | |
| Anchoring | | | | |
| Anchoring mounting screws and secure bolts | ✓ | | ✓ | ✓ |
| Embedding pillars in the halls | ✓ | | ✓ | ✓ |
| Fixing outdoor lampstands and street piles | ✓ | | ✓ | ✓ |
| Grouting | | | | |
| Filling in concrete joints / Underpinning brickwork | | | ✓ | |
| Grouting steel into concrete (ex. fences, entry gates, bars, etc.) | | | ✓ | |
| Grouting joints between prefabricated elements and in situ concrete (fixators and sole plates) | | | ✓ | |
| Anchoring of heavy industrial equipment (also turbines, generators, compressors, engines and other power plants exposed to high dynamic stress) | | | ✓ | |
| Setting pumps or boilers / Grouting bridge bearing and crane rails | | | ✓ | |
| Install and Fix | | | | |
| Fixing, gluing of wooden elements, OSB, GB boards, styrofoam elements | | ✓ | | |
| Fixing, gluing of bituminous coatings, glass, galvanized metal sheet, metal sheet coated with polyester | | ✓ | | |
| Fixing prefabricated elements (curbs, etc.) | | | ✓ | |
| Fixing and joining concrete elements | ✓ | | | ✓ |
| Quick installation of metal elements (sewer hatches, drain covers, etc.) | ✓ | | ✓ | ✓ |
| Fixing of sewage wells and drainage grids | ✓ | | ✓ | ✓ |
| Fixing pipes to the wall | ✓ | | | ✓ |
| Fixing concrete gallantry for gardens (pots, statues, etc.) | ✓ | | ✓ | ✓ |
| Installing door and window frames, doorsteps, panels, etc. | ✓ | | ✓ | ✓ |
| Bonding window & door sills | | ✓ | | |
| Installing metal window grids | ✓ | | | ✓ |
| Assembly of children playground facilities, fence elements, etc. | ✓ | | ✓ | |
| Fixing handrails, brackets, pool nozzles, balcony railings, hooks for sport equipments, etc. | ✓ | | ✓ | |
| Installation of sanitary furniture and fireplaces | ✓ | | ✓ | ✓ |
| Installation of electric devices in brickwork and concrete (sockets, installation boxes, etc.) | ✓ | | | ✓ |
| Other applications | | | | |
| Fast pre-fixing of structures that later are finally installed by conventional concrete works | ✓ | | ✓ | ✓ |
| Building partition walls | | ✓ | | |
| Making prisms to fix guides to determine surface of the floor | ✓ | | | ✓ |
| Concave moldings | ✓ | | | ✓ |
| Making lintel | | | ✓ | |

* dosing cracks up to 20 mm / 20-40 mm with sand addition
local spills and repointing up to 50 mm / 50-100 mm with sand addition

| TECHNICAL DATA | CX 5 | CX 10 | CX 15 | CX 20 |
|------------------------------|----------------------------------|-----------------------|------------------------|------------------------|
| Packaging | 2 or 5 kg bucket; 5 or 25 kg bag | 850 ml can | 25 kg bag | 2, 5 or 20 kg bag |
| Consistency to apply | creamy | foamy | fluid | creamy |
| Working time (at 23°C) | 4 min | 5-9 min | 1 hour | 20 min |
| Temperature range | 5-30°C | 5-35°C | 0-25°C | 5-30°C |
| Consumption / efficiency* | 1.6 kg/l cavity volume | 10-12m ² * | 1.8 kg/l cavity volume | 1.6 kg/l cavity volume |
| Shrinkage | no | no | no | no |
| Water resistant | ✓ | no | ✓ | ✓ |
| Bonding time | 5 min | 20 min | 1 h | 20 min |
| Frost-resistant | ✓ | ✓ | ✓ | ✓ |
| Ready to use | | ✓ | | |
| Indoor & outdoor application | ✓ | ✓ | ✓ | ✓ |
| Horizontal surfaces | ✓ | ✓ | ✓ | ✓ |
| Vertical surfaces | ✓ | ✓ | | ✓ |

| COMPRESSIVE STRENGTH (MPa) | CX 5 | CX 15 | CX 20 | FLEXURAL STRENGTH (MPa) | CX 5 | CX 15 | CX 20 |
|----------------------------|----------|-------|-------|-------------------------|------------|----------|------------|
| | EN 12190 | | | | EN 13892-2 | EN 196-1 | EN 1015-11 |
| AFTER 1 HOUR | ≥ 11* | | | AFTER 6 HOURS | ≥ 3,0 | | ≥ 2,5 |
| AFTER 2 HOUR | ≥ 12* | | ≥ 4* | AFTER 24 HOURS | ≥ 3,0 | ≥ 4,5 | ≥ 3,5 |
| AFTER 6 HOURS | ≥ 15 | | ≥ 15 | AFTER 28 DAYS | ≥ 6,0 | ≥ 7,0 | ≥ 4,2 |
| AFTER 24 HOURS | ≥ 25 | ≥ 35 | ≥ 17 | | | | |
| AFTER 7 DAYS | | ≥ 60 | | | | | |
| AFTER 28 DAYS | ≥ 40 | ≥ 70 | ≥ 33 | | | | |

* according to independent laboratory analyses



| ADHESION TO RIBBED REINFORCING BARS Ø16 MM COVERED WITH CONCRETE MORTAR (MPa) | CX 5 | CX 15 | CX 20 |
|---|----------|-------|--------|
| | EN 12190 | | |
| IN DRY CONDITIONS | ≥ 16 | ≥ 14 | ≥ 11 |
| IN WET CONDITIONS | ≥ 16 | ≥ 12 | ≥ 10,5 |

Examples of CX products applications:

CX range can be used when fixing building constructions like: bridge rails, columns and pillars, railroad tracks, overpasses and bridges, dams, metal constructions. Moreover, there is a wide CX usage in other industrial fields such as: water & gas supply companies, oil rafineries, windmill platforms, chemical and military industry.

