



MAKE YOUR OWN EARTH MOBILE

STEP 1

Using cardboard, cut out a large circle to form the shape of the Earth - remember to add a tab at the top and bottom which you will need later!



STEP 2

Then, draw some shapes on your Earth to make countries and colour in!



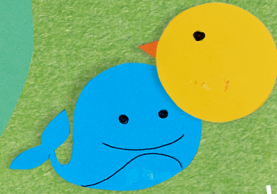
STEP 3

Decorate your straw with coloured paper, and, using your Pritt Stick, glue this to the bottom tab on your Earth.



STEP 4

Colour or decorate the figures provided on the template and cut them out.



STEP 5

Using paper or string, hang your figures to the straw. Use the top tab on your Earth to hang this up to enjoy!



You will need

- Pritt Stick
- Carboard Paper
- Coloured Paper
- Paper Straw
- Coloured Pencils / Pens
- Scissors
- String



Why not?

Make your own shapes using materials you have recycled from home!

For more crafting ideas visit prittworld.co.uk



MAKE YOUR OWN EARTH MOBILE

