



## BLONDME Shade Guide

Integrated Anti-metal Bond Protection Technology protects the hair bonds during processing for minimised hair breakage. No bonding additives or anti-metal treatments needed!



**BLEACH AND  
TONE**



**PASTEL  
TONING**



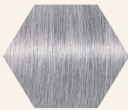
**DEEP  
TONING**



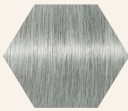
**BLONDE  
LIFTING**



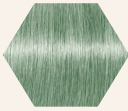
**LIFT AND  
BLEND**



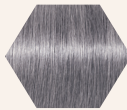
**VIOLET**



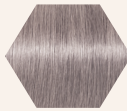
**ASH**



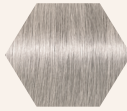
**MATT**



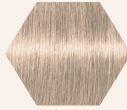
**STEEL  
BLUE**



**ICE-IRISÉ**



**ICE**



**SAND**



**BISCUIT**



**BROWN  
MAHOGANY**



**STRAWBERRY**



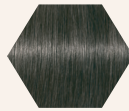
**LILAC**



**CLEAR**



**DEEP  
CHESTNUT**



**GRANIT**



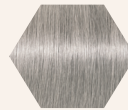
**NOUGAT**



**MILK  
CHOCOLATE**



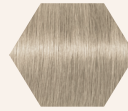
**PEACH  
SORBET**



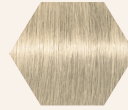
**STEEL  
BLUE**



**ICE-IRISÉ**



**ASH**



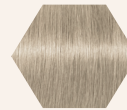
**ICE**



**SAND**



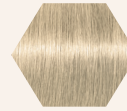
**BISCUIT**



**ASH**



**ICE-IRISÉ**



**ICE**



**SAND**



**BISCUIT**



**BROWN  
MAHOGANY**



Scan to read the complete  
BLONDME Instructions for Use: