

# BACK TO CLASSICS SALON

BEFORE // AFTER  
VORHER // NACHHER



For more information and get inspired, have a look at the #BackToClassics Trendreport: [www.essentiallooks.com/2021-1/trend2](http://www.essentiallooks.com/2021-1/trend2)

Für weitere Informationen und Inspiration sieh Dir unseren #BackToClassics Trendreport an: [www.essentiallooks.com/2021-1/trend2](http://www.essentiallooks.com/2021-1/trend2)



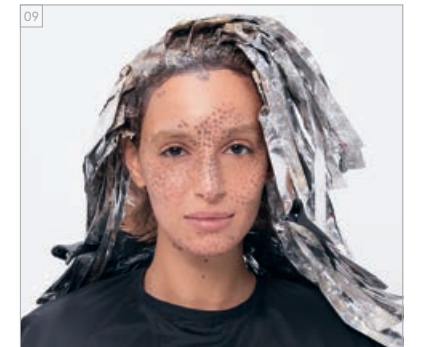
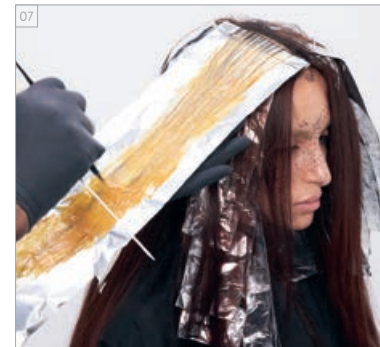
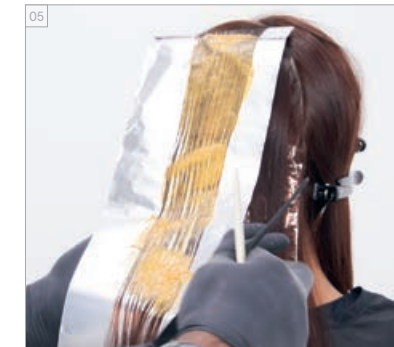
PRODUCTS USED  
VERWENDETE  
PRODUKTE



## #EssentialLooks

COLOUR TECHNIQUE  
#tone-on-tonefoils  
by @randolphgray

COLOUR STEP BY STEPS  
STEP BY STEP - FARBE



### COLOURS USED

#### ALTERNATING FOILS:

COLOUR 1 - IGORA ROYAL 9-98 + PASTELFIER (1:1)  
+ IGORA ROYAL OIL DEVELOPER 9%/30VOL. (1:1)

COLOUR 2 - IGORA ROYAL 7-76  
+ IGORA ROYAL OIL DEVELOPER 6%/20VOL. (1:1)

#### ALL OVER & BETWEEN FOILS:

COLOUR 3 - IGORA ROYAL 5-6  
+ IGORA ROYAL OIL DEVELOPER 3%/10VOL. (1:1)

### CARE USED

BC pH 4.5 COLOR FREEZE SULFATE-FREE MICELLAR SHAMPOO  
BC pH 4.5 COLOR FREEZE CONDITIONER  
BC UV FILTER COLOR FREEZE LIQUID SHINE

### STYLING USED

OSIS+ FAB FOAM  
OSIS+ KEEP IT LIGHT

### VERWENDETE FARBEN

#### ABWECHSELNDE FOLIEN:

FARBE 1 - IGORA ROYAL 9-98 + PASTELFIER (1:1)  
+ IGORA ROYAL OIL DEVELOPER 9% (1:1)

FARBE 2 - IGORA ROYAL 7-76  
+ IGORA ROYAL OIL DEVELOPER 6% (1:1)

#### GLOBAL & ZWISCHEN DEN FOLIEN:

FARBE 3 - IGORA ROYAL 5-6  
+ IGORA ROYAL OIL DEVELOPER 3% (1:1)

### VERWENDETE PFLEGE

BC pH 4.5 COLOR FREEZE SULFATE-FREE MICELLAR SHAMPOO  
BC pH 4.5 COLOR FREEZE CONDITIONER  
BC UV FILTER COLOR FREEZE LIQUID SHINE

### VERWENDETE STYLINGPRODUKTE

OSIS+ FAB FOAM  
OSIS+ KEEP IT LIGHT