

# BACK TO CLASSICS SALON

## #EssentialLooks

COLOUR TECHNIQUE  
#colourgrading  
by @jackhowardcolor

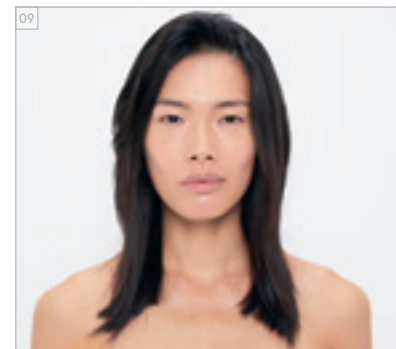
BEFORE // AFTER  
BEFORE // AFTER



For more information and get inspired, have a look at the #BackToClassics Trendreport: [www.essentiallooks.com/2021-1/trend2](http://www.essentiallooks.com/2021-1/trend2)

For more information and get inspired, have a look at the #BackToClassics Trendreport: [www.essentiallooks.com/2021-1/trend2](http://www.essentiallooks.com/2021-1/trend2)

CUT STEP BY STEPS  
CUT STEP BY STEPS



COLOUR STEP BY STEPS  
COLOUR STEP BY STEPS



PRODUCTS USED  
PRODUCTS USED



**COLOURS USED**

- COLOUR 1 - ON ROOTS: IGORA ROYAL 5-0 + IGORA ROYAL OIL DEVELOPER 3%/10VOL. (1:1)
- COLOUR 2 - ON MID LENGTHS: IGORA ROYAL 7-48 + IGORA ROYAL OIL DEVELOPER 9%/30VOL. (1:1)
- COLOUR 3 - ON ENDS: IGORA ROYAL 8-11 + IGORA ROYAL OIL DEVELOPER 9%/30VOL. (1:1)

**CARE USED**

- FIBRE CLINIX TRIBOND SHAMPOO
- FIBRE CLINIX TRIBOND TREATMENT FOR COARSE HAIR 25 g
- + FIBRE CLINIX VIBRANCY BOOSTER 5 g

**STYLING USED**

- OSIS+ OSIS+ BLOW & GO
- OSIS+ ELASTIC
- OSIS+ MAGIC

**COLOURS USED**

- COLOUR 1 - ON ROOTS: IGORA ROYAL 5-0 + IGORA ROYAL OIL DEVELOPER 3%/10VOL. (1:1)
- COLOUR 2 - ON MID LENGTHS: IGORA ROYAL 7-48 + IGORA ROYAL OIL DEVELOPER 9%/30VOL. (1:1)
- COLOUR 3 - ON ENDS: IGORA ROYAL 8-11 + IGORA ROYAL OIL DEVELOPER 9%/30VOL. (1:1)

**CARE USED**

- FIBRE CLINIX TRIBOND SHAMPOO
- FIBRE CLINIX TRIBOND TREATMENT FOR COARSE HAIR 25 g
- + FIBRE CLINIX VIBRANCY BOOSTER 5 g

**STYLING USED**

- OSIS+ BLOW & GO
- OSIS+ ELASTIC
- OSIS+ MAGIC