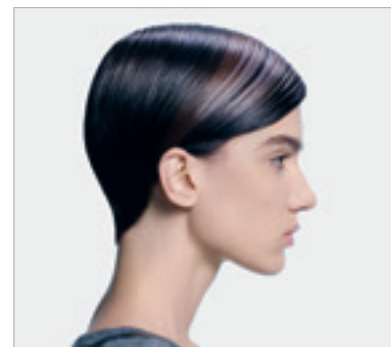
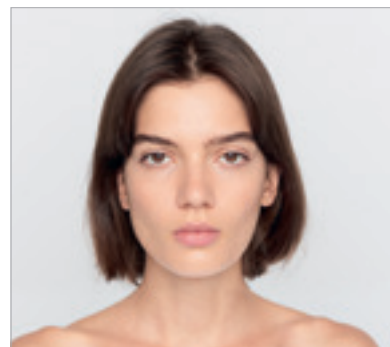


BACK TO CLASSICS CATWALK

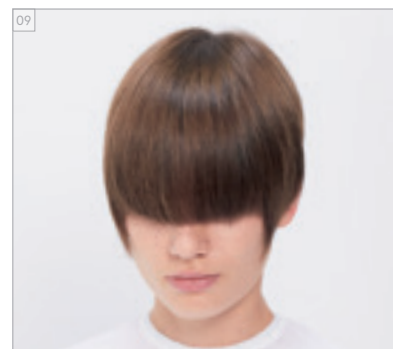
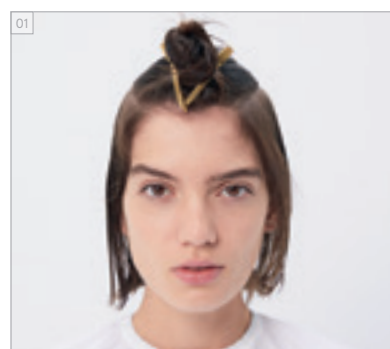
BEFORE // AFTER
BEFORE // AFTER



For more information and get inspired, have a look at the #BackToClassics Trendreport: www.essentiallooks.com/2021-1/trend2

For more information and get inspired, have a look at the #BackToClassics Trendreport: www.essentiallooks.com/2021-1/trend2

CUT STEP BY STEPS
CUT STEP BY STEPS



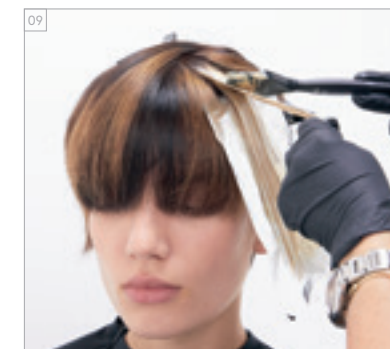
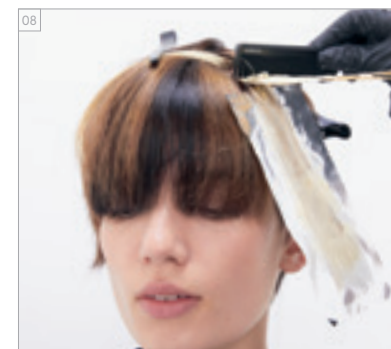
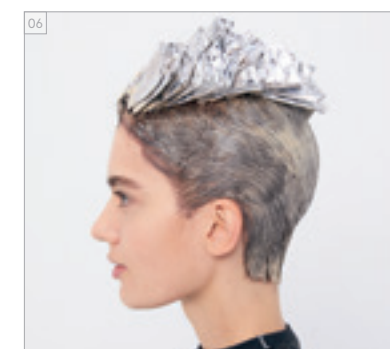
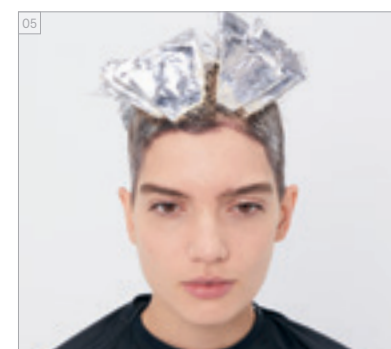
PRODUCTS USED
PRODUCTS USED



#EssentialLooks

COLOUR TECHNIQUE
#colourcontrasts
by @lesleyjennison

COLOUR STEP BY STEPS
COLOUR STEP BY STEPS



COLOURS USED

ALTERNATING FOILS:

- COLOUR 1 - IGORA ROYAL 8-65 + IGORA ROYAL OIL DEVELOPER 9%/30VOL. (1:1)
- COLOUR 2 - IGORA ROYAL 4-6 + IGORA ROYAL OIL DEVELOPER 3%/10VOL. (1:1)
- COLOUR 3 - IGORA VARIO BLOND PLUS + IGORA ROYAL OIL DEVELOPER 6%/20VOL. (1:2)
- COLOUR 4 - ON BACK & SIDES: IGORA ROYAL 5-65 + IGORA ROYAL OIL DEVELOPER 6%/20VOL. (1:1)
- COLOUR 5 - IGORA ROYAL ABSOLUTES SILVERWHITE GREY LILAC + IGORA ROYAL OIL DEVELOPER 3%/10VOL. (1:1)

CARE USED

- BC pH 4.5 COLOR FREEZE SULFATE-FREE MICELLAR SHAMPOO
- BC pH 4.5 COLOR FREEZE TREATMENT
- BC UV FILTER COLOR FREEZE LIQUID SHINE

STYLING USED

- OSIS+ MAGIC
- OSIS+ FREEZE
- OSIS+ HAIRBODY
- OSIS+ KEEP IT LIGHT

COLOURS USED

ALTERNATING FOILS:

- COLOUR 1 - IGORA ROYAL 8-65 + IGORA ROYAL OIL DEVELOPER 9%/30VOL. (1:1)
- COLOUR 2 - IGORA ROYAL 4-6 + IGORA ROYAL OIL DEVELOPER 3%/10VOL. (1:1)
- COLOUR 3 - IGORA VARIO BLOND PLUS + IGORA ROYAL OIL DEVELOPER 6%/20VOL. (1:2)
- COLOUR 4 - ON BACK & SIDES: IGORA ROYAL 5-65 + IGORA ROYAL OIL DEVELOPER 6%/20VOL. (1:1)
- COLOUR 5 - IGORA ROYAL ABSOLUTES SILVERWHITE GRAY LILAC + IGORA ROYAL OIL DEVELOPER 3%/10VOL. (1:1)

CARE USED

- BC pH 4.5 COLOR FREEZE SULFATE-FREE MICELLAR SHAMPOO
- BC pH 4.5 COLOR FREEZE TREATMENT
- BC UV FILTER COLOR FREEZE LIQUID SHINE

STYLING USED

- OSIS+ MAGIC
- OSIS+ FREEZE
- OSIS+ HAIRBODY
- OSIS+ KEEP IT LIGHT