

## Innovative approach for safety and ease of use

Henkel Polybit has taken an innovative approach in communication for safety and easy use of its products. The **Plastifelt ULTRA** range of torch applied bitumen waterproofing membranes are now manufactured with an enhanced thermofusible film having clear visual features which aids the application of the membrane without any errors.

### Sticking time

With the revolutionary **"Stick Timer"** feature embossed on the film, it will clearly define the time to the applicator to stick the membrane on the substrate.

**No more risk of under or over torching!**



### Overlap area

A clear demarcation line leads where is proper alignment of the membrane with the recommended overlap area. This feature ensures the **correct sealing of overlaps** together with **elimination of wastage**.



### Case study 1

Waterproofing failure

#### Solution:

Correct overlapping is crucial element of waterproofing, as weak overlaps are the point of water penetration which causes membrane failure.



The recommended overlapping is 100mm on the side laps and 150mm at the end overlaps. Overlapping above this width will lead to waste of material. With Henkel Polybit's torch on membranes, the top film is marked with overlap width which gives the applicator the opportunity to create precise work results with easy alignment and less waste.

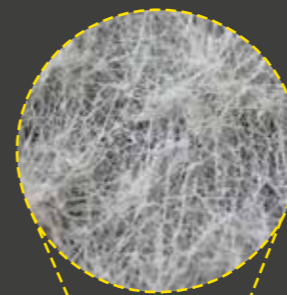


### Case study 2

Damage of reinforcement and poor adhesion

#### Solution:

The damage of the embedded reinforcement is caused by over or under torching and leads to poor adhesion of the membrane with the substrate and on the overlap area. This is why application of torch on membranes require certain skills and experience. With Henkel Polybit's torch on membranes, the top film is marked with embossment that acts as an indicator when to stick the membrane thereby eliminating over torching and under torching.



**NEW**  
**NON TEARABLE**  
TECHNOLOGY



## Plastifelt ULTRA Strong waterproofing membrane

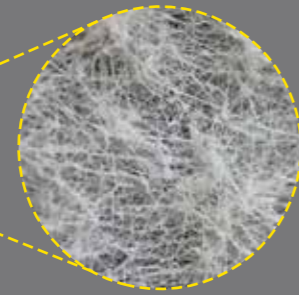
- Excellent durability over time
- High strength and flexibility
- Secured sealing technology



## Plastifelt ULTRA

Manufactured from a mixture of high quality bitumen and selected polymers, this waterproofing torch on membrane provides high durability to ageing and atmospheric agents, superior flexibility and dimensional stability under tension, while ensuring excellent waterproofing properties.

**Plastifelt ULTRA**, the non tearable\* APP waterproofing membrane, is the **trusted solution for the most demanding requirements!**



**NEW**  
**NON TEARABLE**  
TECHNOLOGY

### Reinforcement

The reinforcement, situated at the center of the membrane, is composed of high quality, thermally stabilized materials, passing even the most rigorous quality control standards of Henkel Polybit manufacturing site in the Kingdom of Saudi Arabia.

The advanced technology used for **Plastifelt ULTRA**, ensures that the product is equipped with excellent static and dynamic puncture resistance, high tensile strength and superior flexibility, while offering a secured sealing of the overlap joints.

\*Non tearable by hand and during handling / installation

## All the reasons to choose Plastifelt ULTRA

Non tearable

Advanced formula

Superior flexibility

Secured sealing technology

Ultra strong

Dimensional stability



## Fields of application

**Plastifelt ULTRA** the non tearable bituminous waterproofing membrane is designed to provide high resistance to the penetration of water in challenging conditions and mostly used on the following structures:



Roofs



Terrace & Balconies



Footings



Wet areas

## Packaging details

Roll size	Thickness	Weight
1mx10m	4mm	40kg#
Unit/Pallet	Shelf life	
23	12 months if stored as per recommendations	

### Storage

Plastifelt Ultra rolls must be stored in a shaded area on wooden pallets neatly covered by a thick fabric and tied securely in a manner that will minimize exposure to sunlight and UV.

# Approximate weight



- For more information and product samples, please check with the sales representative in the store.  
- The images used above are for reference purpose only.